

THE BULLETIN OF THE COLORADO SPRINGS MINERALOGICAL SOCIETY Published Since 1960

## Colorado Springs Mineralogical Society

Founded 1936

~ Lazard Cahn ~  
Honorary President

"Pick & Pack"  
Volume 62 No. 10  
December 2022



## CSMS General Assembly

Thursday, December 15, 2022 7:00 PM  
Mt. Carmel Veterans Center

## Annual Club Christmas Party

Pot Luck  
White Elephant

Club members are always encouraged to bring specimens  
to general assemblies to share and/ or help with  
identification

In case of inclement weather please call Mt.  
Carmel Veteran's Service Center 719-309-4714

Visit our website: <http://www.csms1936.com/>

### In This Issue ...

Business/ Upcoming Events/ Poem - D. ST. John, "Coal from Santa"	2 - 5
Article - M. Nelson, <i>Daydreaming About Roscherite, a Beryllium Phosphate, while Ogling the Orchid</i>	6 - 11
Pebble Pups	12 - 13
General Assembly Report/ Pics	14
Poem - S.W. Veatch, "Wealth Comes to Just A Few"	15
Classifieds & Announcements	16
Lapidary at CSMS	17
CSMS Application for Membership	18 - 19
AFMS Code of Ethics	20



## Annual CSMS Christmas Party

Thursday, December 15, 2022 7:00 PM  
Mt. Carmel Veterans Center

**Pot Luck:** A-G Deserts  
H-L Starches  
M-R Fruits & Veggies  
S-Z Salads

**White Elephant:** Bring a gift to exchange  
- Valued \$15 or less  
- Rockhound theme  
- Please label specimens

ADMIT ONE

ADMIT ONE



COLORADO SPRINGS MINERALOGICAL SOCIETY PO BOX 2 COLORADO SPRINGS, COLORADO 80901-0002

## CSMS Group Calendar

Dec '22	Jan '22						
14 Dec	11 Jan	Fossil Group	2nd Wed	6:00 PM	East Library Annex	Jerry Suchan	303-648-3410
1 Dec	5 Jan	Board Meeting	1st Thur	6:00 PM	Zoom	John Massie	719-338-4276
15 Dec	19 Jan	Pebble Pups	3rd Thur	5:30 PM	Mt. Carmel Center	David St. John	719-424-9852
15 Dec	19 Jan	General Assy	3rd Thur	7:00 PM	Mt. Carmel Center	John Massie	719-338-4276
22 Dec	26 Jan	Crystal Group	4th Thur	7:00 PM	Mt. Carmel Center	Kevin Witte	719-638-7919
By appt	By appt	Faceting Group	By appt	By appt		John Massie	719-338-4276
By appt	By appt	Lapidary Group	By appt	By appt	Sharon's House	Sharon Holte	719-217-5683

## Community Events

**Dec 9-11:** Flatirons Gem & Mineral Show, Boulder County Fairgrounds, Longmont, CO. See <https://flatironsmineralclub.org/about/annual-fmc-gem-and-mineral-show-2/>

**Dec 13:** Colorado Scientific Society Potluck Dinner, Annual Meeting, and President's Address, "Who owns the Arctic? – the politics of plate tectonics in a melting world," by Ned Sterne. New Terrain Brewing Company, Terminus Room, 16401 Table Mountain Parkway, Golden. All are welcome to attend, no charge; dinner at approx. 6 PM, meeting & presentation at 7 (please check CSS website to confirm exact times).

**Feb 9-12, 2023:** Tucson Gem and Mineral Show, in the Tucson Convention Center, sponsored by the Tucson Gem and Mineral Society. Other gem & mineral shows in Tucson begin throughout January and the first week of February.

**Feb 24-26, 2023:** Gem and Mineral Show at Jefferson County Fairgrounds, sponsored by Denver Gem & Mineral Guild. Free admission!

**Mar 24-26, 2023:** Fort Collins Gem & Mineral Show, (Friday, 4-8 PM; Saturday, 9 AM - 6 PM; Sunday, 10 AM - 5 PM) at The Ranch/Larimer County Fairgrounds in the Thomas M. McKee Building, Loveland, Colorado. The Ranch, 5280 Arena Circle, Loveland, CO. Free parking, paid admission to show. See <http://www.fortcollinsrockhounds.org/index.shtml>. Please check website to confirm the exact dates.

**Mar 25-26, 2023:** WIPS [Western Interior Paleontological Society] "Founders Symposium, "Mammals! From Mini to Megafauna," Colorado School of Mines Green Center, 924 16th St, Golden. Details forthcoming; see [<https://www.westernpaleo.org%20.%0dhttps://www.westernpaleo.org>]

## President's Corner

John Massie  
CSMS President



### 2022 Satellite Group Chairs

**Kevin Witte/ Bob Germano**, Crystals  
**John Massie/ Bertha Medina**, Faceting  
**Jerry Suchan/ Joy Price**, Fossils  
**Vacant**, Jewelry  
**Sharon Holte**, Lapidary  
**Vacant**, Micro-mount  
**Vacant**, Photography  
**David St. John** Pebble Pups

### 2022 Liaisons

**Florissant Fossil Beds National Monument:**  
S.W. Veatch  
**Western Museum of Mining and History:**  
S.W. Veatch



## Presidential Matters



### A message from CSMS President John Massie:

I want to thank everyone for a wonderful year. We had a very successful gem and mineral show, many successful field trips, and a fun day at the annual picnic at the mining museum. I appreciate all the support from the volunteers who have made the year a great success.

I am looking forward to the Christmas party on December 15, 2022. It will be held at the Mount Carmel Veterans Center from 7 to 9 PM. That is right, it is our regular meeting time and place. It is pot luck, see details on the front page. Do not forget the White Elephant gift exchange, limit \$15.00, gift should be related to rock hounding. The gift exchange is voluntary.

I want to wish everyone a safe and happy holiday season. I am looking forward to another successful year with the help of all members.

John Massie  
CSMS President

## Coal from Santa

By David St. John

All I want from Santa is a chunk of coal  
I plan to be naughty to reach my goal  
It worked for my brother just last year  
I need this coal sample then I can cheer  
Rock hounding around our tree this December  
Will complete my collection for all to remember.



## Secretary's Spot

John McGrath

### 2022 CSMS Officers

**John Massie**, President  
**Rick Jackson**, Vice-President  
**John McGrath**, Secretary  
**Ann Proctor**, Treasurer  
**Adelaide Bahr**, Membership Secretary  
**John Emery**, Editor  
**Chris Burris**, Member-at-Large  
**William Meyers**, Member-at-Large  
**Sharon Holte**, Past President

### 2022 CSMS Chairpersons

**Rick Jackson**, Program Coordinator  
**John Massie**, Show Vol Coordinator  
**Kyle Atkinson**, Field Trip Coordinator  
**Vacant**, Science Fair Chair  
**Frank and Ellie Rosenberg**, Librarians  
**Mark Schultz**, Social Committee Chair  
**Ann Proctor**, Store Keeper  
**Lisa Cooper**, Show Chairman  
**Lisa Cooper**, Webmaster  
**Lisa Cooper**, Facebook Keeper  
**Mike Nelson**, Federation Rep  
**Vacant**, Federation Rep

#### G. Members at Large

1. Bill Meyers. Absent.
2. Chris Burris. Present, no report.

#### H. Past President - Sharon Holte - Absent

1. Website and Show Coordinator - Lisa Cooper, absent

#### X. Satellite Groups

- A. Crystal Group - Kevin Witte, absent. Next formal group meeting is Jan 26, 2022.
- B. Faceting Group - John Massie reported that he is currently teaching classes at the Senior Center, but was still available for members to schedule a session. Ray Quinn teaches in Jan and Feb 2023.
- C. Pebble Group - David St John. More outreach programs are planned. Mt Carmel would like us to bring a can of food, if possible, for their food pantry which has been depleted.
- D. Fossil Group - Jerry Suchan, absent. Meetings will be run by Kristine Harris and Richard Villarares over the Winter months. Meetings are held the 2nd Wednesday of the month from 6-7:30 at the East Library Annex.
- E. Jewelry Group - still in need of a Chairperson
- F. Lapidary Group - Sharon Holte reminded members that she was available for phone calls to schedule use of the club's rock saws on Sunday night after 6:30 PM.

#### XI. Liaisons

- A. Claims - Frank Rosenberg, Present, no report
- B. Field Trip Coordinator - Kyle Atkinson, present, no report.
- C. Social Coordinator - Mark Schutz, Absent. Thanks to David St John for organizing the plentiful selections of delectable diet busters.
- D. Store Keeper - Ann Proctor, Absent.

#### XII. Unfinished Business - None discussed.

#### XIII. New Business

- A. Western Mining Museum Family Day will take place on 21 Jan 23 from 1000-1500. We are still in need of volunteers to staff tables.
- B. Christmas Party.
  1. Due to the rising cost of catering, a potluck was decided upon by the Group after discussion and vote.
  2. There will be a White Elephant Gift Exchange event. If you would like to participate please bring a \$15 wrapped rockhound themed gift.
- C. Board of Directors. Not enough members present to pass a motion to accept the slate of board nominees. Revisit in Jan 2023.

#### XIV. Meeting adjourned by President John Massie at 8:36 PM.

#### Respectfully Submitted

John M McGrath MD COL (RET) USA

## CSMS General Assembly Minutes

7 PM, Thursday 17 Nov 22, Mt Carmel Vet Center, Co Springs

**Address:** 530 Communications Circle, Colorado Springs CO 80905

**Board Attendance:** President: John Massie, Past President: Sharon Holte, Member-at-large: Chris Burris, Secretary: John McGrath, Membership Secretary: Adelaide Bahr, Editor: John Emery.

#### Agenda:

- I. Meeting was called to order by our President John Massie at 7:03 PM
- II. The Pledge of Allegiance was led by President John Massie
- III. Introduction of Guests: None
- IV. Introduction of New Members: None
- V. Program Speaker. Rick Jackson, our VP spoke about his time in Saudi Arabia using a powerpoint presentation and specimens.
  - A. He lived in Saudi Arabia for a total of 9 years in the late 1980s and from 2008-2012 and 2016-2018.
  - B. His specimens included primitive rock tools, sharks teeth found hundreds of miles from water, arrow and spearheads, Desert "Diamonds," and fossilized coral.
- VI. Rockhound of the Year. John Massie and John Emery presented the awards to:
  - A. Junior member - Sawyer Blizzard
  - B. Adult member - Chris Burris
- VII. Awards presentation. Award plaques from the AFMS were presented to:
  - A. John Emery for 2nd place in the Large Bulletins category and 3rd place for a written feature.
  - B. Mike Nelson - 1st place for a feature article - "Pandemic Blues"
- VIII. Meeting - there were 23 members in attendance and 6 minerals were given out.
- IX. Officer reports
  - A. President - John Massie, discussed items in the new and old business sections
  - B. Vice - President - Rick Jackson - Present, no report
  - C. Treasurer Ann Proctor - absent
  - D. Secretary John McGrath - Present. Discussed placement of the club's first geocache along Gold Camp Road approx 4 miles from the "hub" parking above Helen Hunt Falls.
  - E. Membership Secretary - Adelaide Bahr - Present, No report
  - F. Editor - John Emery. Present, no report.





# Federation News Post

American Federation of Mineralogical Societies  
Rocky Mountain Federation of Mineralogical Societies



The American Federation of Mineralogical Societies is composed of the following seven similar regional organizations of gem, mineral, and lapidary societies.

CFMS - California Federation of Mineralogical Societies

EFMLS - Eastern Federation of Mineralogical and Lapidary Societies

MWF - Midwest Federation of Mineralogical and Geological Societies

NFMS - Northwest Federation of Mineralogical Societies

RMFMS - Rocky Mountain Federation of Mineralogical Societies

SCFMS - South Central Federation of Mineral Societies

SFMS - Southeast Federation of Mineralogical Societies

Visit the new AFMS Juniors website: <http://www.juniors.amfed.org/>



The Rocky Mountain Federation of Mineralogical Societies covers local clubs in the following states:

Arizona (21), Arkansas (1), Colorado (18), Kansas (5), Nebraska (western portion of state) (1), New Mexico (6), Nevada (1), North Dakota (western portion of state) (1), Oklahoma (6), South Dakota (western portion of state) (1), Texas (1), Utah (7) and Wyoming (8).

[RMFMS Home Page](#)

[RMFMS Rock and Gem Show Page](#)

[RMFMS Club Spotlight: SNVGMS](#)

**About the AFMS** - A non-profit educational federation of seven similar regional organizations of gem, mineral and lapidary societies. The purpose of AFMS is to promote popular interest and education in the various Earth Sciences, and in particular the subjects of Geology, Mineralogy, Paleontology, Lapidary and other related subjects, and to sponsor and provide means of coordinating the work and efforts of all persons and groups interested therein; to sponsor and encourage the formation and international development of Societies and Regional Federations and by and through such means to strive toward greater international good will and fellowship. Founded in 1947.

**About the RMFMS** - A non-profit educational organization. The purpose of the Rocky Mountain Federation is to have a close association of all clubs in the Society to promote the study of earth sciences, including the lapidary arts, the study of fossils and paleontology, and related crafts. The RMFMS was organized in 1941, and held its first annual convention at the Argonaut Hotel in Denver, Colorado. There were 16 organizations in attendance. The RMFMS became one of the original four founders of the American Federation of Mineralogical Societies when it was organized in 1947.



# Daydreaming About Roscherite, a Beryllium Phosphate, while Ogling the Orchid

Mike Nelson  
csrockguy@yahoo.com

*If you are a fan of the great outdoors, you have probably noticed that you feel happier beyond the confines of your home.*

*- Michael Bassey Johnson*



**Above:** Orchids on my windowsill lower my stress level! Not a bad photo for a cell phone.

This little tidbit of wisdom is not my original writing; however, I suspect all rockhounds probably have “thought this” and just neglected to place it on paper. Instead, we waited for Michael Bassey Johnson to publish such in, *Song of a Nature Lover*. He also noted that “it is scientifically proven that flowers make you feel better. And even just looking at pictures of nature lowers your stress level.”

That is one reason that my office is crowded, and I mean crowded, with paintings, sculptures, do-dads, and photographs of “nature.” In fact, my wall time piece sounds like a Minnesota loon every hour. No cuckoo for me. From my desk chair I look directly at seven framed prints by South Dakotan Terry Redlin. They all remind me of past

**Right:** A print by Terry Redlin: *Pure Contentment*. Was I there, or was this a dream?



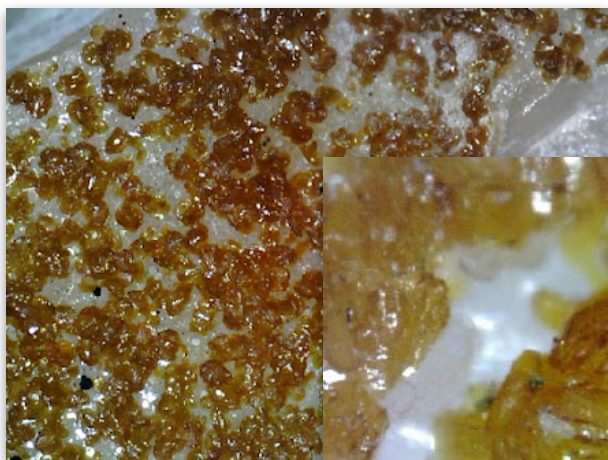
experiences, both real and in my dreams. I look to them for inspiration in releasing words and thoughts from the back recesses of my mind. For example, how do specimens of roscherite (a tiny secondary phosphate) from the Tip Top Mine in the Black Hills compare with specimens from the mines in Maine? I need to check that out—and off I go. Yea, I know my mind works in mysterious ways and I am again reminded of Michael Bassey Johnson: “I saw a tree dancing in the wind, and it said to me, I’m not doing this to entertain you, but to remind you of what life is — a dance in the wind!” That sort of sums it up for my great life thus far, a dance in the wind!



**Above:** Mike Nelson above the Front Range, Colorado: A dance in the wind.

So, these thoughts bring me back to roscherite, a beryllium phosphate with additional calcium and manganese cations:  $\text{Ca}_2\text{Mn}_3\text{Be}_4(\text{PO}_4)(\text{OH})_4 \cdot 6\text{H}_2\text{O}$ . I am most familiar with roscherite from the Tip Top Mine in Custer County, South Dakota. This former tin (cassiterite), mica, lithium, feldspar, beryl (beryllium) mine is the Type Locality for something like 12 colorful phosphate minerals and tens of others are mostly hidden away in vugs and fractures; most are microscopic, but all seem to have beautiful crystals. The pegmatite at the Tip Top, like most others in the area, is related to the 1.7 Ga Harney Peak Granite that forms the core of the Black Hills (Lufkin and others, 2009). Tom Loomis of Dakota Matrix fame, is the mine owner.

Roscherite usually appears as tiny rounded spherical grains with a variety of colors possible—red, orange, brown, brownish yellow, yellowish green. They have a measured hardness of ~4.5 (Mohs), sort of a greasy to resinous luster, and leave a white streak.



Continued ...

**Above:** Photomicrographs of roscherite crystals on a quartz matrix collected at Tip Top Quarry. Individual crystals are sub-millimeter in size ~0.5 mm. *Photos: M. Nelson*



**Below:** Photomicrographs of a vug in matrix from the Estes Quarry; width FOV ~5 mm. The green botryoids are greifensteinite while the orangish crystals in the lower portion are eosphorite (I presume). I don't have the slightest idea about the light colored, mushroom- looking, mass in the upper portion of the print. *Photos: M. Nelson*



Tom Loomis at Dakota Matrix has stated *that the Roscherites at Tip Top are crystallized in a range of colors and the lilac colored crystals may be Zanazziite, the Mg member*. My specimen from the Tip Top has tens of tiny greenish to yellowish spheres clustered together on a quartz matrix. They are very pretty crystals, but small.

I recently was able to purchase a couple of micromounts (roscherites) put together by Art Smith: one from the P.Y. Estes Quarry, West Baldwin, Cumberland County, Maine, and the other from the Black Mountain Quarry, Rumford, Oxford County, Maine.

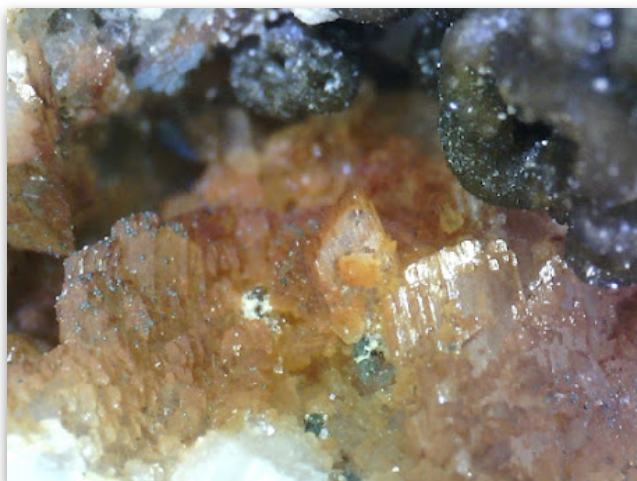
Both specimens were collected by Gene Bearss, a noted collector of minerals from the mines of New England, and a member of the Micromounters Hall of Fame.

The Estes Quarry is an aggregate excavation located in southwestern Maine and has been extensively studied by Thompson and others (2000). They described the exposed granite pegmatite as alternating layers of fine-grained pegmatite, coarse -grained pegmatite, and sugary aplite. The rock forming minerals are albite, microcline, muscovite, and quartz. MinDat lists 63 valid minerals known from the quarry including a very large suite of accessory minerals and secondary phosphates associated with triphylite. Among the more common accessory minerals are beryl, columbite, and columbite; however, the quarry is best known for its assemblage of rare secondary phosphate minerals.

Thompson and others (2000) described the beryllium phosphate roscherite as microcrystals with a wide variety of habits: single, composite, bow-ties, fans, botryoids, and drusy encrustations. The crystals are a



variety of colors ranging from colorless and white to many different shades of green, yellow, and amber. Roscherite is one of the latest minerals to crystalize in the pegmatite paragenesis (sequence in which the minerals form).



**Above:** I believe these crystals are eosphorite in the lower part of the vug. Almost impossible to see are the exceedingly tiny crystals of graphite scattered on the eosphorite. The vug in these five photomicrographs also contains other unknown minerals I simply cannot identify. Photos: M. Nelson

However, since Thompson and others (2000) published their seminal paper, much has been discovered in the roscherite arena. It seems that in the first decade of this century several studies were able to identify new roscherite-like minerals with strings of beryllium and phosphate tetrahedra anions with different amounts and kinds of the

cations Ca, Fe<sup>++</sup>, Fe<sup>+++</sup>, Mn, Zn, Mg. MinDat described these Roscherite Group minerals as “complex monoclinic or triclinic metal-beryllium phosphate (with one arsenate).” These Group minerals (eight of them) are often tough to visually identify (at least to an ole plugger like me).



**Above:** Another small vug (width ~1.8 mm) filled with an unknown. It might be the same as the unidentified mass in the previous photomicrographs. Photo: M. Nelson

So, what do these studies mean to roscherite identifications from the Estes Quarry? Well, there is a good answer for that question if you can locate a copy of the abstracts for the 30th Rochester Mineralogical Symposium and zero in on a paper by Nizamoff and others (2003): specimens from the Estes quarry...exhibit a considerable range in composition from roscherite to greifensteinite and are associated with beryllonite, childrenite-eosphorite, and muscovite. MinDat, in its list of minerals for the Estes Quarry, noted that all roscherite-like specimens should now be listed as greifensteinite, a group mineral that is isostructural with roscherite—same crystal structure but a different chemical composition. In this case ferrous iron with a +2 oxidation state has substituted for manganese [Ca<sub>2</sub>Fe<sub>5</sub>Be<sub>4</sub>(PO<sub>4</sub>)(OH)<sub>4-6</sub>H<sub>2</sub>O].

**Below:** Sub-millimeter crystals from the Black Mountain Quarry of greifensteinite scattered on albite crystals.  
*Photo: M. Nelson*



Again, visually the two minerals look similar and have fairly identical properties. One may need a microprobe to distinguish between the two!

My second micromount was collected from the Black Mountain Quarry, Rumford, Oxford County, Maine, also by Gene Bearss, with identified roscherite. The pegmatites near Rumford are part of the Oxford County pegmatite field and “are situated in the Central Maine Belt, a belt of meta-sedimentary rocks that were deposited in the Late Ordovician, Silurian, and earliest Devonian periods. These rocks originated as marine sediments deposited in a deep-water basin, the Central Maine Basin, immediately before and during the Acadian orogeny (Bradley et al. 2000). Deformation and metamorphism of the lithified sediments took place during the Acadian, Neoacadian, and Alleghenian orogens” [Devonian through Permian Periods; ~375 Ma-- 260 Ma] (Falster and others, 2019).

The Black Mountain pegmatite is well-known for opaque pink rubellite variety of elbaite tourmaline fans in lepidolite and

quartz. MinDat lists 57 valid minerals known from the pegmatite including one Type, kosnarite. This phosphate was named to honor Rich Kosnar, a Colorado Mineral Dealer (Mineral Classics).

Nizamoff and others (2004) stated, “the Black Mountain, Rumford Maine, samples yield compositions ranging from greifensteinite to roscherite with virtually no Mg composition [zanazziite].” MinDat has two photos of greifensteinite only but does list roscherite as occurring in the quarry. I cannot locate the paper that made the decision about greifensteinite occurring as the dominant Roscherite Group mineral. Thompson (1998) in his guide to Maine minerals stated that the localities Buckfield, Newry, Paris, and Rumford (Black Mountain) had yielded Roscherite Group specimens. At that time, I believe the term Roscherite Group was informal and referred to three minerals: roscherite, the manganese analog, greifensteinite the iron analog, and zanazziite, the magnesium analog.

King (1988), in his studies of the nearby Dutton Pegmatite, noted a series of alterations and replacement in the parent rock. The sodium beryllium phosphate mineral beryllonite was attacked by calcium-bearing fluids with the sequence of alteration as: beryllonite, hydroxylherderite, rhodochrosite, eosphorite, and manganese-rich? roscherite.

The specimen in my collection has exceedingly tiny crystals (submillimeter) of what I presume is greifensteinite scattered on albite feldspar.

I suppose this little exercise has taught me that: 1) unless I have access to electronic gizmos it might be best to refer

any unknown roscherite-like specimens to Roscherite Group; 2) one ole plugger can have a great time learning about minerals and the unknown; and 3) "A life spent in nature is a life well lived" - M B. Johnson.

## REFERENCES CITED

Bradley, D. C., R. D. Tucker, D. Lux, A. G. Harris, and D. C. McGregor, 2000, Migration of the Acadian orogen and Foreland Basin across the northern Appalachians: U.S. Geological Survey Professional Paper 1615.

Falster, A.U., W.B. Simmons, K. L. Webber, D.A. Dallaire, J. W. Nizamoff, and R.A. Sprague, 2019, The Emmons Pegmatite, Greenwood, Oxford County, Maine: Rocks & Minerals vol. 94, no. 6.

King, V.T., 1988, Beryllium phosphate alteration at a Newry, Maine, pegmatite: Contributed Papers in Specimen Mineralogy: 14th Rochester Academy of Science Mineralogical Symposium, Rocks & Minerals, vol. 63, no. 2.

Lufkin, J.L., J.A. Redden, A. Lisenbee, and T. Loomis, 2009, Guidebook to the Geology of the Black Hills: Golden Publishers, Golden, CO.

Nizamoff, J.W., A.U. Falster, C.A. Francis, D.B. Lange, L. Menezes, and W.B. Simmons, 2004, New data on Roscherite -Group minerals from New England, South Dakota, and Brazil: Contributed Papers in Specimen Mineralogy: 30th Rochester Academy of Science Mineralogical Symposium, Rocks & Minerals, vol. 79, no. 5.

Thompson, W.B., 1998, A collector's guide to Maine mineral localities, 3<sup>rd</sup> Ed., Maine Geological Survey, Natural Resources Information and Mapping Center, Dept. of Conservation.



Mike is a former University professor and administrator who enjoys outdoor activities, and writing articles for the Pick & Pack, other rock and mineral clubs, and the Newsletter of the Rocky Mountain Federation of Mineralogical Societies ([www.rmfmts.org](http://www.rmfmts.org)). He also writes, and occasionally speaks, about members of the Colorado Cavalry/Infantry who participated in the march to Glorieta Pass (1862), helped settle central Kansas (1865), and later fought at Beecher Island (1868). In CSMS he heads up the Undergraduate Research Committee as introducing students to geology research is a long-time passion. But mostly he just tries to enjoy life with frosty IPAs, travel, and collecting mundane facts and pretty rocks/ minerals.





### Pebble Pups and Earth Scholars

Our lesson in November was on Native American Geology and the many uses of minerals, rocks, and fossils throughout their modern and ancient cultures, tool use, weapons, and petroglyphs. The feature mineral was obsidian, rock was sandstone, and fossil was petrified wood. The NPS, USGS, and museums paid tribute to the indigenous peoples of North America during the month of November.



### December Meeting is our Holiday Party

Our last time to meet this year is on December 15th at 5:30-6:15 PM at Mt Carmel Veterans Center. No lessons, just talk about any science topic you may have. Please bring a treat to share with our pups/scholars. Free samples that are extra special will be passed out. Hope to see everyone there. Bring any Earth Science related artwork or poems that you have created so we can start entering contests in the new year. **Remember to rejoin by the end of January to receive the amazing membership rates before they go up in February.**

### Sawyer Blizzard: Junior Rockhound of the Year for 2022

Congratulations to Sawyer Blizzard for winning Jr RoY for 2022. He has been working hard! We will be presenting the award at the next Fossil club meeting on 12/14/22 East Library 6 PM.

### Outreach Programs

We will be at Howbert Elementary School in December for an all-day Colorado through time event with several organizations supporting the students with The Dinosaur kit from Denver Museum of Science and Natural History and Pioneer Museum.

January 21<sup>st</sup> 10-3 PM we will be at the Western Museum of Mining and Industry for family geology day. Pebble Pups/ Scholars and our club will have a booth in the library. I would love a few kids from our club to volunteer at our booth for an hour and remember to bring your membership card to get in free.

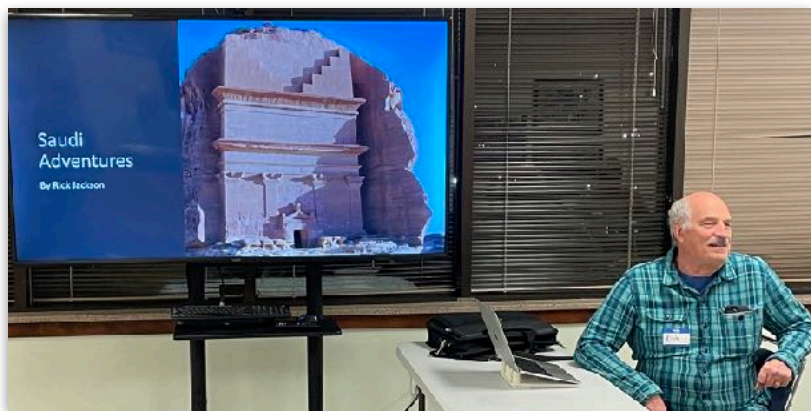
## CSMS Pebble Pups and Earth Science Scholars

### Rock of the Month for December

With Santa on his way I decided to switch it up and choose a rock that we get when they are on the naughty lists. Coal fun facts is largely made of carbon (plant material) but elements such as hydrogen, oxygen, nitrogen, and sulfur occur. It is a black or brown colored sedimentary rock and can take over a million years to form with the right conditions. Coal is combustible rock and has many uses but is mostly used to create electricity. The highest ranking of coal is Anthracite, which is considered a metamorphic rock with 87% carbon for a clean burning fuel.







## General Assembly 17 Nov 22

During this month's general meeting, CSMS VP Rick Jackson took us traveling to join his collecting adventures in Saudi Arabia. We also had the opportunity to view his amazing specimens which he brought back with him.

Christopher Burris was Presented the 2022 CSMS ROCKHOUND OF THE YEAR AWARD. Not shown, Pebble Pup Sawyer Blizzard is our Jr RoY for 2022.

We also had the good fortune to celebrate The American Federation of Mineralogical Societies (AFMS) awards being handed out to:

John Emery for runner up in the nation for Editor of Large Bulletins;

John Emery for his 3<sup>rd</sup> place finish in the nation for Written Features;

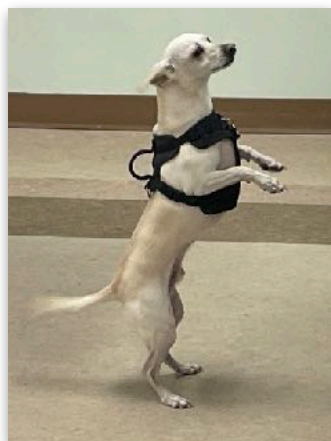
**Mike Nelson** for his **first place finish in the nation** for Adult Articles, Advanced;

Although not present at the meeting, Steven Wade Veatch took both 2<sup>nd</sup> place in the nation for Adult Poetry and 3<sup>rd</sup> place in the nation for Adult Articles, Advanced;

Two of our younger members, Ben Elick and Joshua Hair, collected honorable mentions in the nation for Written Features.

All in all we had a huge success in the national awards and thank our Editor, John Emery, for his tireless job as our Editor.

*Photos and writing: F. Rosenberg*





## Wealth Comes to Just A Few

1865, Buckskin Mining District, Colorado Territory

By Steven Wade Veatch

On the cold mountain of endless time, the pine trees vanish,  
Cut to build a new and brawling Colorado mining camp  
Under a blue and cloudless sky. While underground,  
Miners work the veins—drill, blast, muck, and haul.

In the timbered workings, deep below the surface,  
A cage creaks and scrapes as it lowers men down the shaft.  
At the 12<sup>th</sup> level the shift boss calls out the day's labors and  
Marshals men, methods, and materials to mine minerals.

A miner's faint candle flickers as the mine breathes,  
Casting enough light to penetrate the dark, dank, depths,  
Revealing a shining rich pay streak, just blasted into view.  
In the shadows—where at every turn—death waits to stake a claim.

News of the crushing of young Tom Andrews quickly spreads.  
In the streets of the camp, mining men and townspeople mourn.  
At the graveyard, alongside the river of chance, miners grieve his soul.  
As Tom is laid to eternal rest, spirits cry in the soft summer air.

In the flow of tears, Tom Andrew's young family weeps.  
His death brings hopelessness to his widow and children.  
With no place to go, the frontier family works to cover their woe,  
Picking high-grade ore off the conveyor in the mine's sorting house.

Still new miners come, and others follow over mountain passes  
To replace young Tom Andrews in mines where gold and silver beckons.  
With time, the veins vanish—pinch out—and the land begins to speak:  
Questioning the dreams of those men who came West.

While under the cover of adventure, they seek easy riches,  
Only to learn the lesson that wealth comes to just a few,  
Hard work to all, death to some; and then the time of man fades,  
And in the quiet, moonless dark the mountains endure.



Head of Buckskin Gulch, Mosquito Range. About it are many silver mines that are profitably worked. Buckskin Creek is a small tributary of Clear Creek, draining the southern face of Mount Bross and Mount Lincoln. Park County, Colorado. 1873. Credit: U.S. Geological Survey.

## Classifieds and Announcements



**John Emery**  
Editor

Thanks to our contributors. We encourage everyone to submit articles, photos, illustrations or observations.

Share your experiences, your new finds, or simply your enjoyment of our last field trip.

Handwrite it, type it, or email it. Format does not matter. All submissions are welcome. The DEADLINE for items to be included in the next Pick & Pack is the **last day of the month**.

### To submit an item:

For hardcopy photos or articles, mail to the address below or bring them to the General Meeting. All hardcopy photos remain the property of the submitter and will be returned. Electronic photos can be submitted at resolutions above 200 dpi in ANY format.

Feature articles can be in MS Word or Mac Pages, preferably NOT pdf.

e-mail to the editor:

csmseditor@hotmail.com Mail to:  
Pick & Pack Editor PO Box 2  
Colorado Springs, CO 80901

The PICK & PACK is published ten (10) times per year (no issues in January or August). Unless otherwise marked, materials from this publication may be reprinted. Please give credit to the author and CSMS PICK & PACK.

### Geo-caching with CSMS

CSMS is geo-caching. Visit the CSMS geo-cache website (link below) for everything you need to know about finding CSMS geo-caches. Rockhounds go! Might be best to wait for Spring though.



[https://www.geocaching.com/geocache/GCA1WXD\\_colorado-springs-mineralogical-society](https://www.geocaching.com/geocache/GCA1WXD_colorado-springs-mineralogical-society)

### CSMS Food Drive

The CSMS is conducting a food drive for the holidays. Any club members that are interested in donating to the food drive, bring your canned goods or dried goods to general assembly 15 Dec 22 at 7 PM.



### CSMS Inventory

The CSMS is updating its Inventory of the Club Equipment and Collections. Please send a note to the Secretary John McGrath (john.mcgrath115@gmail.com) with a description and digital photo of what you have in your possession and where it is stored.





## Lapidary at CSMS

lap·i·dar·y  
/ˈləpəˌderē/

*adjective*

relating to stone and gems and the work involved in engraving, cutting, polishing

*noun*

*a person who cuts, polishes, or engraves gems. RE: Sharon Holte, CSMS Past President and Lapidary expert.*

CSMS provides training and use of equipment for our club members to learn how to do and practice lapidary. Our club expert is CSMS Past President Sharon → Holte (see the pic). See page 2 for Sharon's contact information if you are a CSMS club member interested in learning lapidary. It's by appointment only. Meanwhile, explore the pics here, which exhibit the types of lapidary equipment available for club member use, training and practice.







## Colorado Springs Mineralogical Society

Post Office Box 2, Colorado Springs, CO 80901

www.csms1936.com

### 2023 APPLICATION FOR MEMBERSHIP

LAST \_\_\_\_\_ FIRST \_\_\_\_\_ MIDDLE INITIAL \_\_\_\_\_

SPOUSE \_\_\_\_\_ Child (Name) \_\_\_\_\_ Age: \_\_\_\_\_ GRADE \_\_\_\_\_

Child (Name) \_\_\_\_\_ Age: \_\_\_\_\_ GRADE \_\_\_\_\_

#/ STREET \_\_\_\_\_ CITY \_\_\_\_\_

STATE \_\_\_\_\_ ZIP \_\_\_\_\_ EMAIL \_\_\_\_\_

CELL PHONE \_\_\_\_\_ HOME PHONE \_\_\_\_\_

Have you previously been a member of the CSMS? YES \_\_\_\_ NO \_\_\_\_ WHEN \_\_\_\_\_

May your name and contact information be published in the CSMS Membership Directory, distributed only to members? YES \_\_\_\_ NO \_\_\_\_

May your photo may be used in the CSMS Publication "The Pick & Pack"? YES \_\_\_\_ NO \_\_\_\_

	New/Continuing Members		New Members Only that signed up on/between:			
	Before Jan 31, 2023	After Jan 31, 2023	May 31, 2022 - Sep 30, 2022	Oct 1, 2022 - Jan 31, 2023		
<b>Pebble Pup Membership</b> (4 - 12 yrs old; parent is no a member)	\$10.00	\$15.00	\$7.50	\$10.00		
<b>Junior Membership</b> (12 - 17 yrs old; parent is no a member)	\$10.00	\$15.00	\$7.50	\$10.00		
<b>Individual Membership</b> (18 yrs old or older)	\$25.00	\$30.00	\$15.00	\$25.00		
<b>Family Membership</b> (2 adults and dependents under 18)	\$35.00	\$40.00	\$20.00	\$35.00		
<b>Corporate Membership</b> (Up to 5 individual memberships)	\$95.00	\$100.00	\$50.00	\$95.00		

**SATELLITE GROUPS:** Please check all you may be interested in joining - *fill out each year please*

PEBBLE PUPS	FACETING	LAPIDARY	Other: _____ _____
JUNIORS	FOSSILS	PHOTOGRAPHY	
CRYSTAL	JEWELRY	OTHER	

**VOLUNTEER OPPORTUNITIES:** Volunteers are what make our club! - *fill out each year please*

GUEST SPEAKER	FIELD TRIPS	EDITOR/ WRITING	Other: _____ _____
CLUB OFFICER	LOCAL ROCK SHOWS	LIBRARY	
HISTORIAN	ARTIST/MEDIA	REFRESHMENTS	

I hereby agree to abide by the Constitution and By-Laws of the Colorado Springs Mineralogical Society available at:  
[http://www.csms1936.com/wp-content/uploads/2017/02/Constitution\\_and\\_By\\_Laws.pdf](http://www.csms1936.com/wp-content/uploads/2017/02/Constitution_and_By_Laws.pdf). I have read the membership information, as well as the request and waiver for field trips on page II (following). I understand that all members must sign a separate waiver at each field trip to participate. I agree to abide by the American Federation of Mineralogical Societies (AFMS) Code of Ethics available at:  
<http://www.amfed.org/ethics.htm>

Signature of Primary Applicant or Guardian if Minor \_\_\_\_\_

Application Date \_\_\_\_\_

Mail this form and your payment to: Colorado Springs Mineralogical Society, PO Box 2, Colorado Springs, CO 80901 - 0002

Membership Chair Rev: 3 Dec 21

**Page 2: CSMS Application 2023**  
- Membership Information Page -  
- Waiver Release to Participate in Field Trips -

Membership Information

- Membership to CSMS is annual, from January 1st to December 31st. Membership dues must accompany this application, which must be filled out each year.
- Members must abide by the CSMS Constitution and By-Laws, located on the web at: [http://www.csms1936.com/wp-content/uploads/2017/02/Constitution\\_and\\_By\\_Laws.pdf](http://www.csms1936.com/wp-content/uploads/2017/02/Constitution_and_By_Laws.pdf)
- Members in good standing receive the following benefits: 10 electronic issues of the CSMS Pick & Pack newsletter; right to participate in all field trips (additional fees may be required on some field trips and members are responsible for all transportation to and from); participation in one or all Satellite Groups (some groups may request additional fees to help cover resource costs); free admission to the Western Museum of Mining and Industry; a year of learning and enjoyment, plus a lifetime of memories. The Pebble Pup program is a satellite program.
- Continuing memberships must pay full-year dues; a \$5 discount can be applied to renewals on or before January 31st. Anyone who has previously been a member must pay the full rate each year regardless of the time of the year they pay their dues.
- A person, family, or corporation joining the CSMS as a new member after May 30th shall pay half the yearly membership rate. A person joining CSMS as a new member after October 1st receives the rest of the current year plus the next year's membership. The partial year membership shall not apply toward the 25 year Lifetime Membership.
- Members who have paid their dues for 25 years will be awarded a Lifetime Membership on their 26th year. Lifetime Members receive all of the CSMS benefits and no longer have to pay the annual dues. Individual Memberships provided by Corporate Membership are excluded from Lifetime Status. Corporate membership grants up to 5 individual memberships and one yearly (10 issues) 3.5" x 2" advertisement in the CSMS Pick & Pack.

**Release by Participants from Claims Arising By Virtue of Mineral Collecting**

Led By Field Trip Leader of the Colorado Springs Mineralogical Society  
A Non-Profit Corporation – Member: Rocky Mountain Federation of Mineralogical Societies

I/we, the undersigned, hereby request permission to participate in mineral collecting led by the Field Trip Leader of the Colorado Springs Mineralogical Society, a non-profit corporation.

I/we know the risks and danger involved in such activities and that unanticipated and unexpected dangers may arise during such activities, and I/we assume all risks of injury to my / our persons and properties that may be sustained in connection with the stated and associated activities in and around the premises.

In consideration of the permission granted to me/our participation in the stated activities, I/we hereby for myself, my heirs, administrators, and assigns release to the Colorado Springs Mineralogical Society and the Rocky Mountain Federation of Mineralogical Societies, and their representatives, servants, agents, officers and officials and all other participants in the stated activities of and from all claims, demands actions and causes of actions of any sort, for injuries sustained to my/our person and/or property during my presence on the premises and participation in the stated activities due to negligence or any other fault.

\_\_\_\_\_  
Signature of Primary Applicant or Guardian if Minor

\_\_\_\_\_  
Date



## **American Federation of Mineralogical Societies**

### **Code of Ethics**

I will respect both private and public property and will do no collecting on privately owned land without permission from the owner.

I will keep informed on all laws, regulations or rules governing collecting on public lands and will observe them.

I will, to the best of my ability, ascertain the boundary lines of property on which I plan to collect.

I will use no firearms or blasting material in collecting areas.

I will cause no willful damage to property of any kind such as fences, signs, buildings, etc.

I will leave all gates as found.

I will build fires only in designated or safe places and will be certain they are completely extinguished before leaving the area.

I will discard no burning material - matches, cigarettes, etc.

I will fill all excavation holes which may be dangerous to livestock.

I will not contaminate wells, creeks, or other water supplies.

I will cause no willful damage to collecting material and will take home only what I can reasonably use.

I will practice conservation and undertake to utilize fully and well the materials I have collected and will recycle my surplus for the pleasure and benefit of others.

I will support the rockhound project H.E.L.P. (Help Eliminate Litter Please) and will leave all collecting areas devoid of litter, regardless of how found.

I will cooperate with field-trip leaders and those in designated authority in all collecting areas.

I will report to my club or federation officers, Bureau of Land Management or other authorities, any deposit of petrified wood or other materials on public lands which should be protected for the enjoyment of future generations for public educational and scientific purposes.

I will appreciate and protect our heritage of natural resources.

I will observe the "Golden Rule", will use Good Outdoor Manners and will at all times conduct myself in a manner which will add to the stature and Public Image of Rockhounds everywhere.





Pick & Pack  
P.O. Box 2  
Colorado Springs, CO 80901-0002



**CSMS is an incorporated nonprofit organization with the following goals:**

- To promote and disseminate knowledge of the earth sciences, especially as they relate to mineralogy, lapidary, and fossils.
- To encourage study, collection, and fashioning of minerals.
- To accomplish the same through social meetings, lectures, programs, displays, shows, and field trips.
- The Pick & Pack newsletter is published 10 times each year to assist and promote the above.

**Joining the Colorado Springs Mineralogical Society (CSMS):**

- Meetings are held the third (3rd) Thursday of each month, except January & August.
- 7:00 PM at Mt. Carmel Veterans Service Center; 530 Communication Circle, Colorado Springs, CO 80905
- Visitors are always welcome.
- Individuals—\$30, Family—\$40, Juniors—\$15, Corporate—\$100.
- Find the application at the web site: [www.csms1936.com](http://www.csms1936.com). If you are interested in joining CSMS or would like more information, we encourage you to attend our next General Meeting or visit our web site.

**Meetings:** CSMS also offers Satellite Group meetings that allow more focused attention in specific areas of our members' interests. Our current Satellite Groups consist of the following: Crystal Study Group, Faceting Group, Fossil Group, Lapidary Group, and Pebble Pups/ Juniors. For details on Satellite Group meetings, check out the calendars on page 2 and the web site.

**Membership Benefits:** Yearly dues include 10 issues of the *PICK & PACK*, all field trips (additional fees may be required on some field trips, and members are responsible for all transportation to and from), participation in all Satellite Groups (some groups may request additional fees to help cover resource costs), free admission to the *Western Museum of Mining & Industry* (carry your card), a year of learning and enjoyment, plus a lifetime of memories.

**Colorado Springs Mineralogical Society is a Member of the following organizations:**

- American Federation of Mineralogical Societies (AFMS) [www.amfed.org](http://www.amfed.org)
- Rocky Mountain Federation of Mineralogical Societies (RMFMS) [www.rmfmms.org](http://www.rmfmms.org)