



**Colorado Springs  
Mineralogical Society**  
Founded in 1936  
**Lazard Cahn**  
Honorary President  
“Pick & Pack”  
Vol 61 Number 5

## CSMS General Assembly

Thursday, June 17, 2021 7:00 PM

PLUS! Pebble Pup special session June 17 5:30-6:15 PM  
Mt. Carmel Veterans Center

### GUEST SPEAKER:

Steven Wade Veatch with Ben Elick  
“Castle Rock Quarries”

**\*\* Members with last name A-L bring refreshments \*\***  
In case of inclement weather please call Mt. Carmel Veteran’s  
Service Center 719-309-4714



### In this issue...

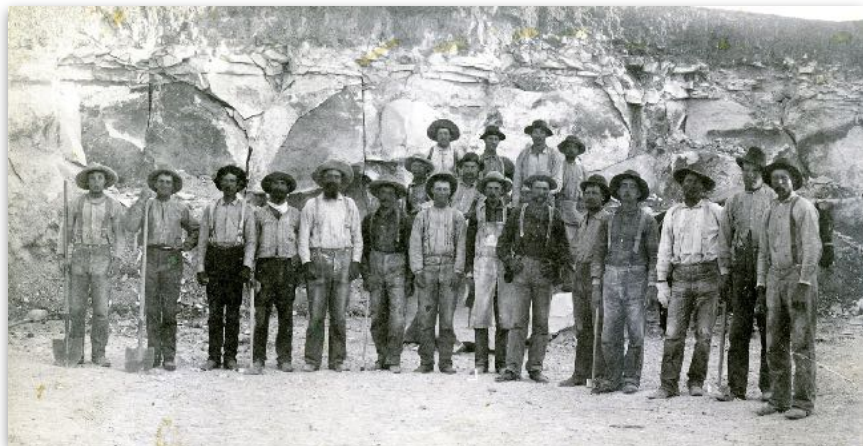
Upcoming Events	2
Secretary's Spot	3
Federation News Post	5
Presidential Matters	6
<i>In Memoriam Robert C. Berry</i>	7
Pebble Pups	8
Feature Article - M. Nelson, <i>Sylvanite: Au! It's Gold</i>	9
Poem - S.W. Veatch, “La Brea Tar Pits”	12
Classifieds/ Announcements	13
Field Trip Schedule	14

## GUEST SPEAKER: Steven Wade Veatch: “Castle Rock Quarries” with Ben Elick



S.W. Veatch

Steven Veatch, with Ben Elick, will share the story of the Castle Rock Quarries. He has worked on this project for 23 years, and it is now time to present it for the first time. The presentation will explore the geology, petrology, mineralogy, and history of these quarries. Some of the historic buildings built from the quarries will be featured. Don’t miss this essential program!



**Right:** Quarrymen pose at the Madge Quarry, later known as the Douglas Quarry. Some workers hold shovels, others hold sledgehammers. Unknown photographer. Photo date circa 1890s. Courtesy Douglas County Libraries Archives & Local History, no. 1997.011.0678.0001.

COLORADO SPRINGS MINERALOGICAL SOCIETY PO BOX 2 COLORADO SPRINGS, COLORADO 80901-0002

## CSMS Calendar

Jun '21	Jul '21							
06/01/21	07/06/21	Fossil Group	<b>CANCELLED</b>	1st Tues	7:00 PM	Pikes Peak United Methodist Church	Jerry Suchan	303-648-3410
06/03/21	07/01/21	Board Meeting		1st Thur	7:00 PM	Pikes Peak United Methodist Church	John Massie	719-338-4276
06/17/21	07/15/21	Pebble Pups (see session online)	<b>CANCELLED</b>	3rd Thur	5:30 PM	Mt. Carmel Center	Steve Veatch	719-213-1475
06/17/21	07/15/21	General Assy Meeting		3rd Thur	7:00 PM	Mt. Carmel Center	John Massie	719-338-4276
06/24/21	07/22/21	Crystal Group		4th Thur	7:00 PM	Mt. Carmel Center	Kevin Witte	719-638-7919
06/24/21	07/22/21	Faceting Group	<b>CANCELLED</b>	4th Thur	7:00 PM	Berta's House	John Massie	719-338-4276
By appt	By appt	Lapidary Group	<b>CANCELLED</b>	By appt	By appt	Sharon's House	Sharon Holte	719-217-5683

## Other CSMS Events

### **Not cancelled:**

Board Meeting	June 03, 2021 6:00 PM Zoom
General Assembly Meeting	June 17, 2021 7:00 PM Mt. Carmel
Crystal Group	June 24, 2021 7:00 PM Mt. Carmel

**Jun 17:** 5:30 PM - The Pebble Pups are meeting in person for a special meeting June 17; before the general meeting, from 5:30 to 6:15 PM at Mt. Carmel. This is an important first post-pandemic meeting for pebble pups. Steven veatch will talk about rock, minerals, and fossils in this fun session. He will provide a variety of specimens for each Pebble Pup to take home. Don't miss!

**Oct 1-3:** Pikes Peak Gem, Mineral, & Jewelry Show is scheduled for October 1-3 2021.

## Community Events

**TBD** Florissant Scientific Society: All live meetings are cancelled until further notice. Meanwhile check out some recent meetings that you may have missed on the FSS YouTube Channel: <https://www.youtube.com/channel/UCmA-JzMgXLWbAtJLVzOFQTg/videos>

**June 8:** 4 PM - "The Ghosts of Gilman Encore Presentation," by Steven Wade Veatch at the Western Museum of Mining and Industry (WMMI), Cost: \$5 - Members of WMMI are free, Call or email: 719-488-0880 [info@wmmi.org](mailto:info@wmmi.org) for more information and to reserve your space.

**June 18-20:** Victor Gem & Mineral Show

**July 23-25:** Fairplay Gem, Mineral & jewelry Show

**Aug 12-15:** Buena Vista Gem & Mineral Show

**Aug 20-22:** Lake George Gem, Mineral & Jewelry Show

**Sept 30 - Oct 3:** Colorado Springs Gem, Mineral & Jewelry Show

## Secretary's Spot

## Meeting Minutes

Colorado Springs Mineralogical Society

### 2021 CSMS Officers

**John Massie**, President

**Rick Jackson**, Vice-President

**Vacant**, Secretary

**Ann Proctor**, Treasurer

**Adelaide Bahr**, Membership Secretary

**John Emery**, Editor

**Chris Burris**, Member-at-Large

**Renee Swanson**, Member-at-Large

**Sharon Holte**, Past President

### 2021 CSMS Chairpersons

**Rick Jackson**, Program Coordinator

**John Massie**, Show Vol Coordinator

**Mike Webb**, Field Trip Coordinator

**Steven Veatch**, Science Fair Chair

**Frank and Ellie Rosenberg**, Librarians

**Mark Schultz**, Social Committee Chair

**Ann Proctor**, Store Keeper

**Lisa Cooper**, Show Chairman

**Lisa Cooper**, Webmaster

**Lisa Cooper**, Facebook Keeper

**Mike Nelson**, Federation Representative

**Vacant**, Federation Representative

### CSMS General Assembly

Meeting Minutes

June 17, 2021

#### Meeting Start

- The meeting was called to order by CSMS President John Massie at 7:05 PM.
- The meeting was held at the Mount Carmel Veterans Center.
- There were 20 members present.

#### Guest Speaker

Steve Vetch gave an interesting talk on the Castle Rock granite quarries.

#### Meeting

- During the break we gave 20 mineral specimens out to winners of the drawing.
- It was announced that we will be holding the Pikes Peak Gem and Mineral show October 1, 2, and 3. We will set up on Thursday September 30, 2021.
- Steve Vetch was presented with a going away gift of a desk clock with a plaque.
- The pebble pup's new leader was announced. His name is David St John, he is a retired teacher.
- The Rock hound of the year awards were not given out because the recipients were not present.
- Treasurer: no report.
- The crystal group will start meetings on June 24, 2021.
- Because of the lack of funds due to extending the 2020 dues to 2021 we decided not to issue grants this year.

John Massie  
CSMS President



# Federation News Post

American Federation of Mineralogical Societies  
Rocky Mountain Federation of Mineralogical Societies



## AFMS Convention and Show Dates:

~~2021, April 21-25, Sandy, UT~~ (see notice below)

2022, Jan. 29 -30, Tyler, TX



## RMFMS Conventions, Workshop and Show Dates:

~~2021, April 16-18 - Sandy, UT (with AFMS)~~ (see notice below)

2022, May 7-8 - Las Vegas, NV

## PUBLIC NOTICE

The 2021 joint RMFMS & AFMS  
Conference has been changed to:

**Big Piney, WY - June 17-20**  
**(aka Marbleton, WY)**



Due to COVID restrictions, the joint  
2021 AFMS & RMFMS Conferences  
are not able to be held in Sandy, UT.

BUT, since everyone had so much  
fun in 2020, the **Sublette County**  
**Rock Hounds** have graciously  
stepped up to host the conference  
again this year.

New Dates: June 17-20, 2021

Contact: Jim Gray (jimgray@wyoming.com)

**About the AFMS** - A non-profit educational federation of seven similar regional organizations of gem, mineral and lapidary societies. The purpose of AFMS is to promote popular interest and education in the various Earth Sciences, and in particular the subjects of Geology, Mineralogy, Paleontology, Lapidary and other related subjects, and to sponsor and provide means of coordinating the work and efforts of all persons and groups interested therein; to sponsor and encourage the formation and international development of Societies and Regional Federations and by and through such means to strive toward greater international good will and fellowship. Founded in 1947.

**About the RMFMS** - A non-profit educational organization. The purpose of the Rocky Mountain Federation is to have a close association of all clubs in the Society to promote the study of earth sciences, including the lapidary arts, the study of fossils and paleontology, and related crafts. The RMFMS was organized in 1941, and held its first annual convention at the Argonaut Hotel in Denver, Colorado. There were 16 organizations in attendance. The RMFMS became one of the original four founders of the American Federation of Mineralogical Societies when it was organized in 1947.



## President's Corner

John Massie



### 2021 Satellite Group Chairs

**Kevin Witte/ Bob Germano**, Crystals

**John Massie/ Bertha Medina**, Faceting

**Jerry Suchan/ Joy Price**, Fossils

**Vacant**, Jewelry

**Sharon Holte**, Lapidary

**Vacant**, Micro-mount

**Vacant**, Photography

**Open/ Open** Pebble Pups

### 2021 Liaisons

**Florissant Fossil Beds National Monument:**  
Steven Veatch

**Western Museum of Mining and History:**  
Steven Veatch

## Presidential Matters



We have one club officer position and two leadership positions open/vacant. Please consider volunteering for these fun and rewarding (very important!) club positions.

### Secretary (Club officer)

- Produce General assembly and board meeting minutes for publication in the Pick & Pack newsletter
- Ensure updates are made to the Society constitution and By-laws when resolutions and/or revisions are duly authorized by the membership
- Have name plates and position plates created for officer installation in January
- Preserve all records necessary to conduct the business of the Society
- Receive, read and answer Society communications
- Submit to the Pike Peak Library: Penrose Library: Historical Department, for the purpose of maintaining the Society's history as stated in the constitution

### Pebble Pup Leader (Group leader) plus Assistant

- Lead, organize, develop and inspire youth interested in pursuing studies and activities related to Earth science, geology, mineralogy, paleontology, rockhounding and related subjects
- Pebble pup activities facilitated by the Pebble Pup leader and assistant:
  - Field trips (e.g. rockhounding, museums etc)
  - Attending and/or presenting at conferences, symposiums, club meetings
  - Writing papers/poems etc for publication
  - Volunteer at Gem and mineral shows; conferences; Family days
  - Scholarships
  - Pebble Pup club meetings

Contact me at [jsmassie1075@gmail.com](mailto:jsmassie1075@gmail.com) if interested in any of these positions.

The current Pebble Pup leader can be contacted directly at [steven.veatch@gmail.com](mailto:steven.veatch@gmail.com). Steven is ready to assist the new Pebble Pup leader and serve as consultant going forward. He's been doing it for almost 30 years and has a wealth of experience and advice. You can meet Steven in person June 17, 7:00 PM at the regular CSMS General Assembly at Mt. Carmel Veteran's Center or contact him anytime at the aforementioned email address.

John Massie  
CSMS President

## *In memoriam Robert C. Berry – May 15, 2021*



Robert “Bob” Berry, 65, passed away on May 15<sup>th</sup> 2021. He was a resident of Colorado Springs for 51 years and was formerly a resident of Detroit, MI and Cortland, NY. He was an engineer with Johnson and Johnson and had recently retired.

Bob was born on September 16<sup>th</sup>, 1955 to Raymond Rodney Berry and Eloise Marilyn (Racklyft) Berry in Cortland, NY.

Bob loved riding his bike, he would ride rain or shine as long as there was no snow or ice. He also enjoyed traveling and had been looking forward to seeing the country during his retirement. He attended Air Academy High School.

He is survived by his children: Jacquelyn Heslep and Catherine Jimenez; his sons-in-law: Derrick Heslep and Joseph Jimenez; his grandchildren: Andrew Jimenez, Haley Jimenez, Brianna Berry, Nehemiah Jimenez, Elijah Heslep, Amelia Jimenez, and Eloise Heslep; and his brothers: David Barnes and Stephen Berry. He was preceded in death by Eloise Berry (Mother) and Raymond Berry (Father).

A Celebration of Life will be held at 2 pm on Monday, May 24<sup>th</sup>, 2021 at the Shrine of Remembrance, 1730 E. Fountain Blvd, Colorado Springs, CO. A reception will be held following the Celebration of Life at Farside Lounge, 4375 Airport Rd, Colorado Springs, CO.

Memorials in Bob’s name may be made in lieu of flowers to Children’s Hospital of Colorado Springs.

## Pebble Pups

Steven Veatch



## CSMS Pebble Pups and Earth Science Scholars

**NOTICE:** Regular Pebble Pup meetings are **SUSPENDED** until TBD



Please visit our blog for special announcements and field trips:

<http://pebblepups.blogspot.com>

<http://www.csms1936.com>



Find your assignments at:

<http://pebblepups.blogspot.com/p/merit-badge-assignments.html?m=1>

### Pebble Pup Program Update

Pebble Pups, pound for pound, is the most productive, most published, most awarded class in the history of informal education of all time and anywhere. If one were to tally the publications, awards, achievements, and other plaudits for the group during the past three decades, the list would be impressive.

Pebble Pups is a place where talented, dedicated, and ambitious young learners can engage with Earth science and where they live and breathe our hobby, meet other kids, and talk about rocks, minerals, and fossils nonstop. If you throw a lot of talented kids together in one place and give them the freedom to work and play together, good things are going to happen. The mere fact that these kids are in the same room together creates a positive feedback loop that lifts all of them toward their highest potential.

The real work of the program is done outside of the classroom when they attend club meetings, go on field trips, speak at the Denver Show and at the New Mexico Mineral Symposium. Several Pebble Pups have even addressed the Geological Society of America.



**Above:** A Pebble Pup meeting before the Pandemic.

Steven Veatch, who has led the Pebble Pups for almost 30 years, is retiring. The Colorado Springs Mineralogical Society is looking for someone to replace him as head of the group and also an assistant to help the new leader work with the Pebble Pups. Steven Veatch will remain as the program consultant and provide complete training. Please contact Steven Veatch if you are interested in working with the Pebble Pups: [steven.veatch@gmail.com](mailto:steven.veatch@gmail.com)



### CSMS PEBBLE PUP GRADUATES FROM UNC

Distance Pebble Pup Destin Bogart graduated last week with a degree in Earth science from the University of Northern Colorado. Destin was active in Pebble Pups as a distance student while he attended high school in Pueblo. He contributed original articles on paleontological topics and made presentations with active CSMS Pebble Pups at the Denver Show three times. The Pebble Pups have been popular speakers at the Denver Show for five years. Destin also helped with the CSMS Pebble Pup outreach programs at Garden of the Gods Visitor Center and the Rocky Mountain Dinosaur Resource Center. Destin plans to attend graduate school and study paleontology.

The CSMS has worked with six distance students, one as far away as Scotland.

## SYLVANITE: Au! IT'S GOLD

Mike Nelson  
csrockguy@yahoo.com

Even on my best days I do not pretend to be any sort of a “real” mineralogist. Yes, I have learned to enjoy minerals after giving up my career as a paleontologist/stratigrapher and administrator, and certainly try to learn as much as possible; however, there are many things about the formation of minerals that are beyond the scope of my limited abilities. One of these areas of confusion remains the formation of the gold deposits in the Cripple Creek Mining District southwest of Colorado Springs. I probably should leave any musings about Cripple Creek minerals to my friend Bob Carnein up at Lake George. However, I recently picked up a specimen of sylvanite collected by one S. Willman in 1981 from Cripple Creek (anything more definitive than Cripple Creek is unknown). Sylvanite  $[(\text{AuAg})_2\text{Te}_4]$  is a mineral composed of silver, gold, and tellurium and that makes it even more interesting.

The element tellurium is a silver-white metalloid (possesses properties of both metals and non-metals) with the symbol Te and the atomic number of 52 (number of protons in the nucleus of the atom). It is a critical raw material used in the solar industry, copper and steel alloys, and semiconductors but its extraction also poses environmental risks for our planet (Missenab and others, 2020).

Tellurium exhibits oxidation states of 6+, 5+, 4+, 3+, 2+, 1+, 1-, 2-; however, only 6+, 4+ and 2- are stable. Tellurium can act as a cation with a 4+ oxidation state (a tellurite; IV) as in the uncommon mineral tellurite,  $\text{TeO}_2$ , or with

a 6+ oxidation state (a tellurate; VI) as in jensenite,  $\text{Cu}_3\text{TeO}_6 \cdot 2\text{H}_2\text{O}$ . The **telluride** anion with a charge of 2- can combine with gold and silver cations in the minerals calaverite  $[\text{AuTe}_2]$ , krennerite  $[\text{Au}_2\text{AgTe}_8]$ , and sylvanite  $[(\text{AuAg})_2\text{Te}_4]$ ; all form major gold ores at Cripple Creek, Colorado. In fact, Eckel and others (1997) noted that other than Cripple Creek, where krennerite and calaverite are the major sources of gold, sylvanite is probably the most valuable of the gold minerals in the other telluride gold deposits of Colorado.

Although mineralogists have recognized eight gold-silver telluride minerals (calaverite, krennerite, sylvanite, petzite, muthmannite, empressite, hessite, and stuetzite), the gold-rich telluride species—calaverite, krennerite and sylvanite—are the most common and economically important minerals of the group (Zhao and Pring, 2019). Work by Cabri (1965) identified the following amounts of silver in each: krennerite 3.4 to 6.2 wt % Ag; sylvanite 6.7 to 13.2 wt % Ag; and calaverite 0 to 2.8 wt % Ag. Krennerite and calaverite both have over 40% gold while sylvanite somewhere in the mid-30s. However, native gold is the most common gold-bearing mineral, and the most valuable. Since native gold is rare at Cripple Creek early miners roasted the ore to volatilize the tellurium, a process that left rather pure gold as blisters or “sponge.” See photos below. The current Cresson Pit uses a heap leach process.

Sylvanite has about a 1:1 to 3:1 ratio of gold to silver. In sylvanite  $[(\text{AuAg})_2\text{Te}_4]$  the oxidation state of gold is 3+ while silver is 1+ [ $X \cdot 2 = 8+$ ] while Te is 2- [ $X \cdot 4 = 8-$ ] and things balance out. Since it is a metal, sylvanite is opaque and has a shiny, metallic luster with a silver-white streak.

Continued ...



It comes in a variety of metal-like colors—white, silver-white, gray, sort of yellow, and is quite soft at ~1.5-2.0 (Mohs). Crystals vary from platy to prismatic to granular. My specimen has very tiny crystals and numerous non-descript grains.



**Above:** Streaks and scattered grains/crystals of silver-gray to silver-yellow sylvanite. The grains/crystals are submillimeter and are not very distinguishable. Width FOV top: ~5 mm, bottom: ~4mm. *Photo: M. Nelson*

MinDat notes that sylvanite mostly is associated with low-temperature hydrothermal veins; however, it is also a late forming mineral in medium to high-temperature hydrothermal veins and is usually among the last minerals to form. But the magmatic-hydrothermal processes causing the tellurium and gold

enrichment in epithermal deposits (deposition by warm water shallow crustal environment associated with volcanic activity) is not well understood (Keith and others, 2020). Cripple Creek, with its deposits of gold tellurides, is a notable crustal laboratory for the study of epithermal deposits.



**Above:** Blister of roasted gold ore from the Ajax Mine at Cripple Creek/Victor. The underground mine is no longer in operation and may be, or is, consumed by the large open pit known as the Cresson Mine. Width FOV ~9 mm.

*Photo: From the former collection of CSMS member Willard Wulff and mounted 1985.*



**Above:** "Sponge" gold of roasted ore from the Ajax Mine. Width FOV ~7 mm. *Photo: From the former collection of CSMS member Willard Wulff and mounted 1985.*

It is worth mentioning that the Type Locality of sylvanite is Baia de Aries, Romania. Now think of werewolves, vampires, and Vlad Dracula all living in in this Romanian region of Transylvania. The name sylvanite comes from Transylvania. Just a little spooky trivia.





**Above:** Blister and "sponge" gold of roasted ore from the Ajax Mine. Width FOV ~1.1 cm. Photo: From the former collection of CSMS member Willard Wulff and mounted 1985.



**Above:** Gold in roasted ore from the El Paso Mine at Cripple Creek. Width FOV ~1.95 cm. Photo: Originally in the collection of CSMS member Chris Christensen and then acquired by CSMS member Willard Wulff.

And thinking of Transylvania and Dracula reminds me of my favorite Wm. Shakespeare quote:

*Eye of newt, and toe of frog,  
Wool of bat, and tongue of dog,  
Adder's fork, and blind-worm's sting,  
Lizard's leg, and owlet's wing, —  
For a charm of powerful trouble,  
Like a hell-broth boil and bubble.  
Double, double toil and trouble;  
Fire burn, and caldron bubble.*

## REFERENCES CITED

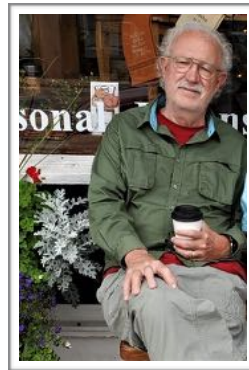
Eckel, E. B. and others, 1997 (original 1961), Minerals of Colorado: Putnam Press and Friends of Mineralogy-Colorado Chapter, Golden.

Cabri, L.J., 1965, Phase relations in the Au-Ag-Te system and their mineralogical significance: Economic Geology, Vol. 60.

Keith, Manuel, D. J., Smith, K. Doyle, D. A. Holwell, G. R.T. Jenkin, T. L. Barry, J. Becker and J. Rampee, 2020, Pyrite chemistry: A new window into Au-Te ore-forming processes in alkaline epithermal districts, Cripple Creek, Colorado: Geochimica et Cosmochimica Acta, Vol. 274.

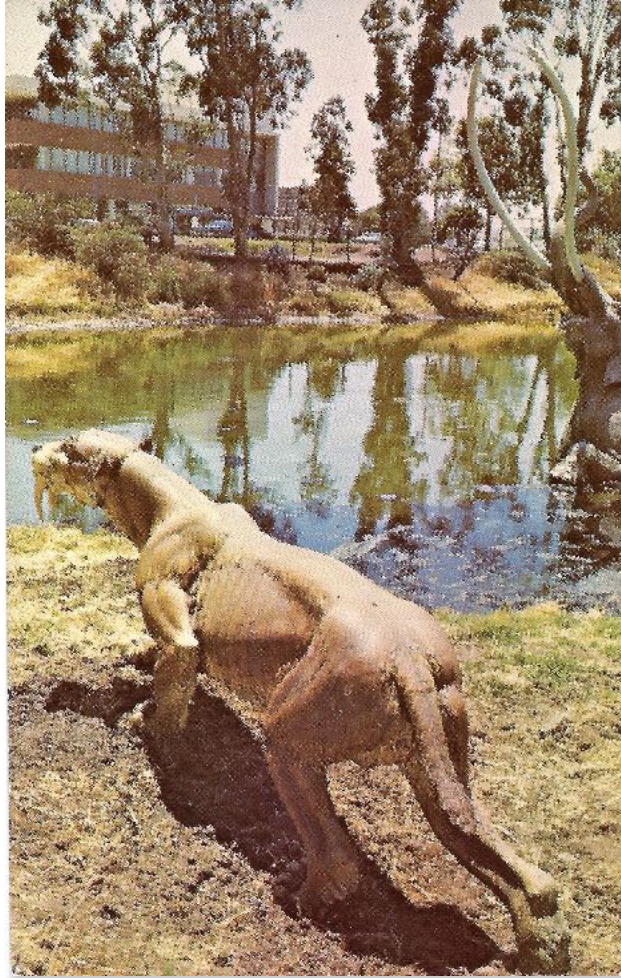
Missenab, O.P., R. Rama, S.J. Millsb, B. Etschmanna, F. Reithcd, J. Shustercd, D.J. Smithe, and J. Bruggera, 2020, Love is in the Earth: A review of tellurium (bio)geochemistry in surface environments: Elsevier Earth-Science Reviews, Vol. 204, 103150.

Zhao, J. and A. Pring, 2019, Mineral transformations in gold-(silver) tellurides in the presence of fluids: nature and experiment: Minerals, Vol. 9, No. 3 (in The Special Issue Mineral Surface Reactions at the Nanoscale).



Mike is a former University professor and administrator who enjoys outdoor activities, and writing articles for the Pick & Pack, other rock and mineral clubs, and the Newsletter of the Rocky Mountain Federation of Mineralogical Societies ([www.rmfmms.org](http://www.rmfmms.org)). He also writes, and occasionally speaks, about members of the Colorado Cavalry/Infantry who participated in the march to

Glorieta Pass (1862), helped settle central Kansas (1865), and later fought at Beecher Island (1868). In CSMS he heads up the Undergraduate Research Committee as introducing students to geology research is a long-time passion. But mostly he just tries to enjoy life with frosty IPAs, travel, and collecting mundane facts and pretty rocks/minerals.



## **La Brea Tar Pits**

**Steven Wade Veatch**

From a tar seep  
bubbling asphalt pools.  
Here Ice Age animals  
disappear and time  
is trapped.

Dire wolves,  
saber-tooth cats,  
coyotes,  
and mammoths  
will one day  
return as fossils.



## Classifieds and Announcements



**John Emery**  
Editor

Thanks to our contributors. We encourage everyone to submit articles, photos, illustrations or observations. Don't be shy.

Share your experiences, your new finds, or simply your enjoyment of our last field trip.

Handwrite it, type it, or email it. Format does not matter. All submissions are welcome. The **DEADLINE** for items to be included in the next Pick & Pack is the **last day of the month**.

### To submit an item:

For hardcopy photos or articles, mail to the address below or bring them to the General Meeting. All hardcopy photos remain the property of the submitter and will be returned. Electronic photos can be submitted at resolutions above 200 dpi in ANY format.

Articles are preferred in MS Word, preferably NOT pdf.

e-mail to the editor:  
csmseditor@hotmail.com

Mail to:  
Pick & Pack Editor  
PO Box 2  
Colorado Springs, CO 80901

The PICK & PACK is published ten (10) times per year (no issues in January or August). Unless otherwise marked, materials from this publication may be reprinted. Please give credit to the author and CSMS PICK & PACK.

### **The Ghosts of Gilman Encore Presentation**

Western Museum of Mining and Industry  
Steven Wade Veatch



If you are a history buff and just enjoy poking around ghost towns, you'll have the time of your life in this multimedia presentation. Steven Veatch will share photographs and videos of his onsite explorations of Gilman, an abandoned mining town in south-eastern Eagle County, Colorado. You will

feel a sense of astonishment and discovery as you tour this mining camp that turned into a company town. You will see the old hospital, general store, geology lab, miner's hall, and other town buildings. This presentation tells the story of Gilman's four phases: 1) Gilman as a 19th century boomtown; 2) Gilman as a model company town under the ownership of New Jersey Zinc; 3) how Gilman fueled a thriving mid-20th century American economy; and 4) Gilman as a toxic wasteland after 100 years of environmental degradation. In the presentation the town's significance is explored in the broader context of Colorado and Western American history. Today this is private property and off limits to the public. Do not miss this essential presentation that examines a compelling story of Colorado's mining past in Gilman. It is a story so bold, so big, that only the American West can hold it.

**Date:** June 8, 2021

**Time:** 4 pm

**Location:** Western Museum of Mining and Industry

**Cost:** \$5 - Members of WMMI are free

**Call/email:** 719-488-0880 [info@wmmi.org](mailto:info@wmmi.org) for more info; reserve a spot

### **Call for Speakers**

Dr. Richard Sauers, Curator at the Western Museum of Mining and Industry (WMMI) is calling for speakers to visit WMMI and present one of the "Second Tuesday" lectures this year. Currently WMMI is doing taped presentations and posting them to their website for a time. They hope to switch back to live presentations sometime this year.

If you are interested in presenting, please contact the editor:  
[csmseditor@hotmail.com](mailto:csmseditor@hotmail.com)



## Field Trip Schedule - CSMS 2021

We're always looking for volunteer trip leaders so we can add a few more field trips to this list. If you have a locality you'd like to visit or are willing to lead a field trip, please contact the field trip coordinator **Mike Webb** at:

[mwebbstudent@yahoo.com](mailto:mwebbstudent@yahoo.com)

**Mike Webb**

Field Trip Coordinator

Topaz Mountain Gem Mine, Tarryall Mountains, Park Co. CO

**Date:** Friday: June 25, 2021

**Leader:**

**Contact:**

Crystal Peak Mining District, Smoky Hawk Mine, Teller Co, CO

**Date:** Saturday: July 10, 2021

**Leader:**

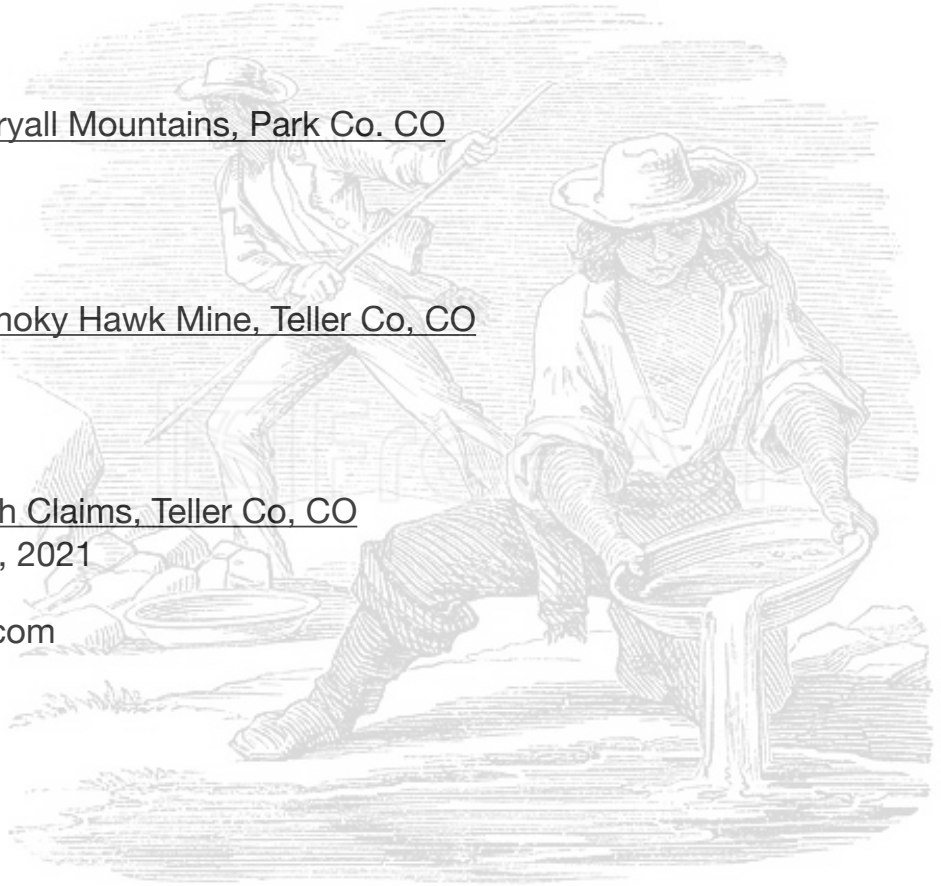
**Contact:**

Florissant, Rocky Mountain High Claims, Teller Co, CO

**Date:** Saturday : September 11, 2021

**Leader:** John Emery

**Contact:** csmseitor@hotmail.com



## Rock Hound of the Year 2020 Nominations

Two individuals have been nominated for "Rock Hound of the Year" for 2020:

- John Emery, CSMS Editor, for tireless efforts producing the newsletter
- Chris Burris, CSMS Member-at-Large, for two extraordinary paleontological finds





## **“Code of Ethics”**

A large measure of the enjoyment of our hobby consists of collecting in the field. For that reason, the members are proud to endorse the following:

**I will respect both private and public property and will do no collecting on privately owned land without permission from the owner.**

**I will keep informed on all laws, regulations or rules governing collecting on public lands and will observe them.**

**I will, to the best of my ability, ascertain the boundary lines of property on which I plan to collect.**

**I will use no firearms or blasting material in collecting areas.**

**I will cause no willful damage to property of any kind such as fences, signs, buildings, etc.**

**I will leave all gates as found.**

**I will build fires only in designated or safe places and will be certain they are completely extinguished before leaving the area.**

**I will discard no burning material - matches, cigarettes, etc.**

**I will fill all excavation holes which may be dangerous to livestock.**

**I will not contaminate wells, creeks, or other water supplies.**

**I will cause no willful damage to collecting material and will take home only what I can reasonably use.**

**I will practice conservation and undertake to utilize fully and well the materials I have collected and will recycle my surplus for the pleasure and benefit of others.**

**I will support the rockhound project H.E.L.P. (Help Eliminate Litter Please) and will leave all collecting areas devoid of litter, regardless of how found.**

**I will cooperate with field-trip leaders and those in designated authority in all collecting areas.**

**I will report to my club or federation officers, Bureau of Land Management or other authorities, any deposit of petrified wood or other materials on public lands which should be protected for the enjoyment of future generations for public educational and scientific purposes.**

**I will appreciate and protect our heritage of natural resources.**

**I will observe the "Golden Rule", will use Good Outdoor Manners and will at all times conduct myself in a manner which will add to the stature and Public Image of Rockhounds everywhere.**



Pick & Pack  
P.O. Box 2  
Colorado Springs, CO 80901-0002



**CSMS is an incorporated nonprofit organization with these goals:**

- To promote and disseminate knowledge of the earth sciences, especially as they relate to mineralogy, lapidary, and fossils.
- To encourage study, collection, and fashioning of minerals.
- To accomplish the same through social meetings, lectures, programs, displays, shows, and field trips.
- The Pick & Pack newsletter is published 10 times each year to assist and promote the above.

**Joining the Colorado Springs Mineralogical Society (CSMS):**

- Meetings are held the third (3rd) Thursday of each month, except January & August.
- 7:00 PM at Mt. Carmel Veterans Service Center; 530 Communication Circle, Colorado Springs, CO 80905
- Visitors are always welcome.
- Individuals—\$30, Family—\$40, Juniors—\$15, Corporate—\$100.
- Find the application at the web site: [www.csms1936.com](http://www.csms1936.com). If you are interested in joining CSMS or would like more information, we encourage you to attend our next General Meeting or visit our web site.

**Meetings:**

CSMS also offers Satellite Group meetings that allow more focused attention in specific areas of our members' interests. Our current Satellite Groups consist of the following: Crystal Study Group, Faceting Group, Fossil Group, Lapidary Group, and Pebble Pups/Juniors. For details on Satellite Group meetings, check out the calendars on page 2 and the web site.

**Membership Benefits:**

Yearly dues include 10 issues of the *PICK & PACK*, all field trips (additional fees may be required on some field trips, and members are responsible for all transportation to and from), participation in all Satellite Groups (some groups may request additional fees to help cover resource costs), free admission to the *Western Museum of Mining & Industry* (carry your card), a year of learning and enjoyment, plus a lifetime of memories.

**Colorado Springs Mineralogical Society is a Member of the following organizations:**

- American Federation of Mineralogical Societies (AFMS) [www.amfed.org](http://www.amfed.org)
- Rocky Mountain Federation of Mineralogical Societies (RMFMS) [www.rmfm.org](http://www.rmfm.org)