



## Colorado Springs Mineralogical Society

*Founded in 1936*

**Lazard Cahn**

Honorary President

Oct 2020

"Pick & Pack"

Vol 60 Number 8

## CSMS General Assembly Thursday, Oct 15, 2020, 7:00 PM Mt. Carmel Veterans Center

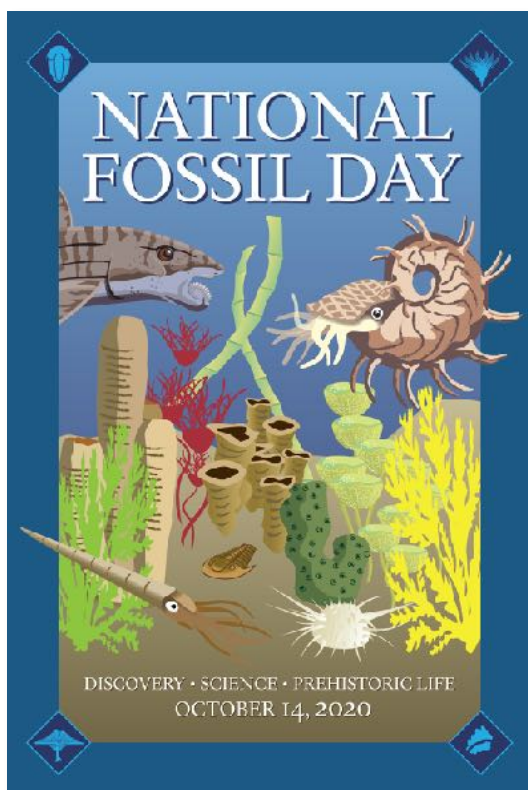
**CANCELED**

**Please note:** Members whose names begin with A-L are responsible for refreshments in October

In case of inclement weather please call Mt. Carmel Veteran's Service Center 719-309-4714

### Inside this issue

National Fossil Day	1
CSMS Calendar Events	2
Community Events	3
Article - The Briding Estate	4-8
Field Trip- Rocky Mtn High	9
President's Corner	10
Pebble Pups	11
Secretary's Spot	12
Code of Ethics	13
Classifieds & Announcements	14
About CSMS	15



The National Park Service and National Fossil Day™ partners are sponsoring an art contest to celebrate the 11th annual National Fossil Day. The 2020 National Fossil Day celebration is scheduled for Wednesday, **October 14, 2020**, during Earth Science Week. The theme for this year's art contest is: "Life of the Paleozoic Oceans!" For this theme we would like contest participants to depict aquatic organisms from the Paleozoic oceans, particularly those found in the United States of America. The Paleozoic era (541 to 250 million years ago) was the earliest of the three geologic eras with diverse life, and is subdivided into six geologic periods: the Cambrian, Ordovician, Silurian, Devonian, Carboniferous, and Permian. The 2020 National Fossil Day logo features a wide variety of sea creatures that formed and lived within a 270 million year old Permian Reef from Glass Mountains and Guadalupe Mountains of Texas and New Mexico. Please follow this link for more details:

<https://www.nps.gov/subjects/fossilday/art-contest-2020.htm>

COLORADO SPRINGS MINERALOGICAL SOCIETY PO BOX 2 COLORADO SPRINGS, COLORADO 80901-0002

# Upcoming CSMS Events

**ALL CSMS activities are CANCELED until further notice**

General Assembly Meeting	CANCELED	Oct '20
Pebble Pup Meeting	CANCELED	Oct '20
Crystal Club Meeting	CANCELED	Oct '20
Board Meeting	CANCELED	Oct '20
Fossil Club Meeting	CANCELED	Oct '20
Faceting Club Meeting	CANCELED	Oct '20

## CSMS Calendar

Oct '20	Nov '20						
10/06/20	11/03/20	Fossil Group	1st Tues	7:00 PM	Pikes Peak United Methodist Church	Jerry Suchan	303-648-3410
10/01/20	11/05/20	Board Meeting	1st Thur	7:00 PM	Pikes Peak United Methodist Church	John Massie	719-338-4276
10/15/20	11/19/20	See session online	3rd Thur	5:30 PM	Mt. Carmel Center	Steve Veatch	719-213-1475
10/15/20	11/19/20	General Assy Meeting	3rd Thur	7:00 PM	Mt. Carmel Center	John Massie	719-338-4276
10/22/20	11/26/20	Crystal Group	4th Thur	7:00 PM	Mt. Carmel Center	Kevin Witte	719-638-7919
10/22/20	11/26/20	Faceting Group	4th Thur	7:00 PM	Berta's House	John Massie	719-338-4276
by appt	by appt	Lapidary Group	by appt	by appt	Sharon's House	Sharon Holte	719-217-5683

For more information on any of the sub-groups, meetings or other valuable CSMS information, go to our website: [www.csms1936.com](http://www.csms1936.com)

# Upcoming Community Events

## (Submitted by Pete Modreski)

**Oct 8 4:00 PM - 5:00 PM** Van Tuyl Lecture (Virtual), Colorado School of Mines, *Deep-water Processes and Deposits, from Mass Transport Complexes in Eastern Offshore Trinidad to Mixed Siliciclastic-Carbonate Systems in Offshore Nova Scotia and a Bit More*, by Lorena G. Moscardelli, Equinor Principle Researcher Geology.

Join from PC, Mac, Linux, iOS or Android: [https://mines.zoom.us/j/94595509386?](https://mines.zoom.us/j/94595509386?pwd=Ym1ybXZBWc8vRVJELzNpSSfTQ0I3Zz09)  
pwd=Ym1ybXZBWc8vRVJELzNpSSfTQ0I3Zz09  
Password: 650850

Or iPhone one-tap: 12532158782,94595509386# or 13462487799,94595509386#

Or Telephone:

Dial: +1 253 215 8782 (US Toll) or +1 346 248 7799 (US Toll)

Meeting ID: 945 9550 9386

Or a H.323/SIP room system:

H.323: 162.255.37.11 (US West) or 162.255.36.11 (US East)

Meeting ID: 945 9550 9386

Password: 650850

SIP: 94595509386@zoomcrc.com

Password: 650850

Visit website for the abstract:

<https://calendar.mines.edu/event/van-tuyl-lecture-virtual-lorena-g-moscardelli-equinor//>

**Oct 8 7:00 PM** Emmons Lecture, Colorado Scientific Society, *21st Century Field Geology on the New Frontier*, by Michael Zolensky, Planetary Scientist, Astromaterials Research and Exploration Science, NASA Johnson Space Center, Houston, TX. Visit website for the link to the Zoom meeting and how to join and for the abstract: <https://coloscisoc.org>

**Oct 29 4:00 PM - 5:00 PM** Van Tuyl Lecture (Virtual), Colorado School of Mines. Dr. Julie Rowland, University of Auckland. Visit website for updated information how to attend virtually:

<https://calendar.mines.edu/event/van-tuyl-lecture-virtual-dr-julie-rowland-university-of-auckland/>

**POSTPONED** Symposium on Water and Energy in Colorado, to be held in Ricketson Auditorium, Denver Museum of Nature and Science. Cosponsored by the Colorado Scientific Society, Denver Museum of Nature & Science, Center for the American West, and others. Details forthcoming. [Note:] was scheduled for Sat, May 16, 2020, now postponed until TBD date.

**TBD** Florissant Scientific Society: All live meetings are cancelled until further notice. Meanwhile check out some recent meetings that you may have missed on the FSS YouTube Channel:

<https://www.youtube.com/channel/UCmA-JzMgXLWbAtJLVzOFQTg/videos>

## - End of Event Section -



# The Briding Estate Sale: Part I

Mike Nelson

csrockguy@yahoo.com

The Colorado Springs Mineralogical Society lost a long-time member, Laurann Briding, in June 2020. Laurann was an active rockhound and had a large collection of both purchased and personally dug specimens. Recently the family had the rock/mineral estate appraised by local dealer Leonard Himes and material was then turned over to Rebecca Nohe Estate Sales for disbursement on August 7-9.



**Above:** Specimens and jewelry from the Briding Estate were tastefully displayed by Rebecca Nohe. *Photo: M. Nelson*

Most of the material was sold by flats ranging in price from \$5.00 to \$1,000.00 and hundreds of micro-mounts were available for a buck per piece. There were also several individual cabinet specimens highlighted by a \$5,000.00 rhodochrosite from the famous Sweet Home Mine near Alma, Colorado. Perhaps the most



**Above:** A large selection of micro-mounts were available and a few are shown above. Mike Nelson took a couple of micro-flats home August 9, 2020. *Photo: M. Nelson*



**Above:** The Sweet Home Mine rhodochrosite sold on Saturday morning, August 8, 2020 for the asking price, \$5,000.00. Notice the reflecting mirror in the back of the showcase: Mike Nelson with his mask on. *Photo: M. Nelson*

interesting item in the sale was a brass microscope owned by the CSMS founder and Honorary President for Life, Lazard Cahn. That was a real find and I was hoping that a benefactor would purchase the scope and turn

it over to a museum.

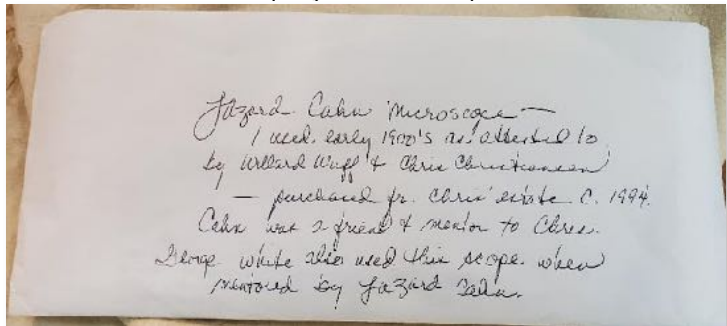


**Left:** A brass microscope once owned by Lazard Cahn, Honorary President for Life of the Colorado Springs Mineralogical Society.  
*Photo: M.Nelson*

Due to COVID-19, I was hesitant to head out into a public area since I have pretty much self-quarantined at home since late March. But, access to the show room was limited and by appointment only (30 minutes only) and masks were required. So off I went to check out the goodies. As noted in a future posting, my best purchase was a nice specimen of the hydrated zinc arsenate legrandite  $[Zn_2(AsO_4)(OH) \cdot (H_2O)]$ , a very collectable mineral due to its color and rarity. But I did purchase a few other minerals with good specimens scattered in the flats.

When rockhounds think of collectable amethyst the concretions from Brazil pop into their mind. Ask them about amethyst from Mexico and the gemmy quartz crystals from Vera Cruz are probably in their collection. However, amethyst from the Guanajuato silver mines are probably not familiar to most rockhounds. And speaking of silver, the Guanajuato mining district is one of the most prolific and best-known silver districts in the world. Silver was discovered in 1548 and estimates of historic production range from 700 million to 1.5 **billion ounces** of silver, as well as 4.0 million to 7.0 million ounces of gold. Guanajuato was a major center of the Spanish colonial mining boom; in-fact, at one point the La Valenciana mine to the north of the city accounted for up to two third of the worlds silver production. Within 20 miles of Guanajuato's downtown there are at least eight major metal mines either in production, in development, or recently closed, as well as a flurry of exploration activity. To non-rockhounds, Guanajuato may be best known as the home of painter Diego Rivera, the husband of painter and political activist

**Below:** A note to accompany the microscope. *Photo: M.Nelson*



**Below:** Lazard Cahn ~1930. *Photo© courtesy of the Digital Collections at the Pikes Peak Library District.*

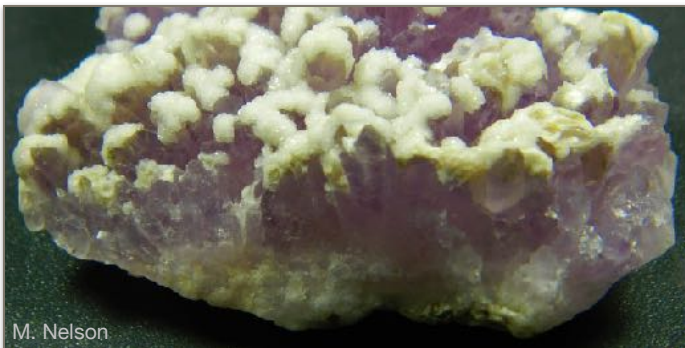




Frida Kahlo.

The Guanajuato mines are classified as “epithermal vein deposits” where a variety of minerals are located in veins that are probably the result of previous fractures and cracks in the host rock. The hydrothermal brines, especially sodium-calcium-chloride brines, are effective solvents and dissolve the primary sulfide ores and circulate through the host rocks. As these brines begin to cool, usually at shallow depths, deposition of minerals takes place and often these veins of minerals are quite rich. In fact, epithermal gold deposits are some of the richest gold deposits in the world. At Guanajuato, mineralization consists dominantly of silver sulfides and sulfosalts (a metal + semi-metal + sulfur), base metal sulfides (metal + sulfur) mostly chalcopyrite, galena, sphalerite, and pyrite, and electrum (alloy of silver and gold). Gangue minerals (the waste rock) are generally quartz and calcite; the host rocks (holding the minerals) are Mesozoic sedimentary and intrusive igneous rocks and Tertiary volcanic rocks (<https://miningdataonline.com/property/1493/Guanajuato-Mine.aspx#Geology>).

I did not come home with a piece of silver or gold but did acquire a showy purple and white specimen with a base of gemmy terminated



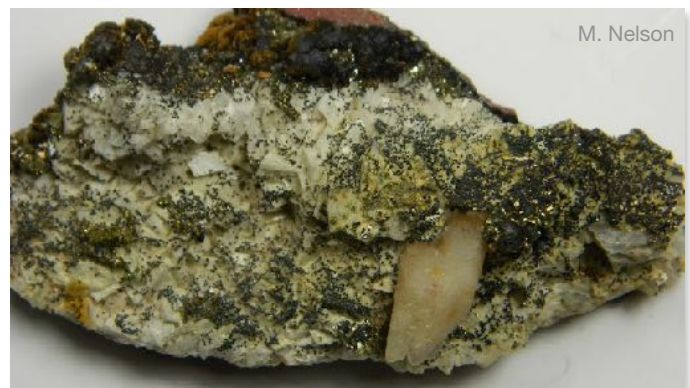
**Above:** Amethyst base with showy, snow white rosettes of micro calcite crystals. Width FOV ~4.7 cm. Photo: M. Nelson

crystals of amethyst covered with rosettes of tiny snow-white crystals of calcite. I could not locate information on the collector although the label appears to have some age and originally sold for \$6.00.



**Above:** Amethyst base with showy, snow white rosettes of micro calcite crystals. Width FOV ~4.7 cm. Photo: M. Nelson

Another specimen in the acquired mixed flat is a really nifty piece that has a core and base of white, well formed, dolomite crystals with a partial crust of surficial brownish-black to reddish-brown, botryoidal (individual botryoids ~4 mm) goethite.



**Above:** A base of white dolomite crystals with scattered micro balls of black goethite, larger black botryoidal goethite along top of specimen, scattered "clumps of pyrite, especially right, and a single large calcite crystal. Length of specimen ~ 9 cm. Photo: M. Nelson

Cont pg. 7



**Below:** Reverse of previous specimen. Note the bright red, massive hematite, and the black botryoidal goethite.

*Photo: M. Nelson*



In cross-sectional view the botryoids are composed of radiating (from the center) long prismatic crystals that have a metallic luster and a steel-gray color.



**Above:** Cross sectional view of the large goethite botryoids showing acicular crystals. Width FOV ~1 cm. *Photo: M. Nelson*

There are also isolated tufts or sprays of steel-gray or orange acicular goethite “sticking up” between some of the botryoids.

**Right:** Sprays of gold/orange/black goethite with some nice pyrite crystals. Width FOV ~7 mm.

*Photo: M. Nelson*



A second round of goethite consists of tiny (less than 1 mm) black “balls” scattered randomly across exposed dolomite crystals.



**Above:** Scattering of micro balls of goethite on dolomite crystals with scattered small pyrite crystals. Width FOV ~1.7 cm. *Photo: M. Nelson*

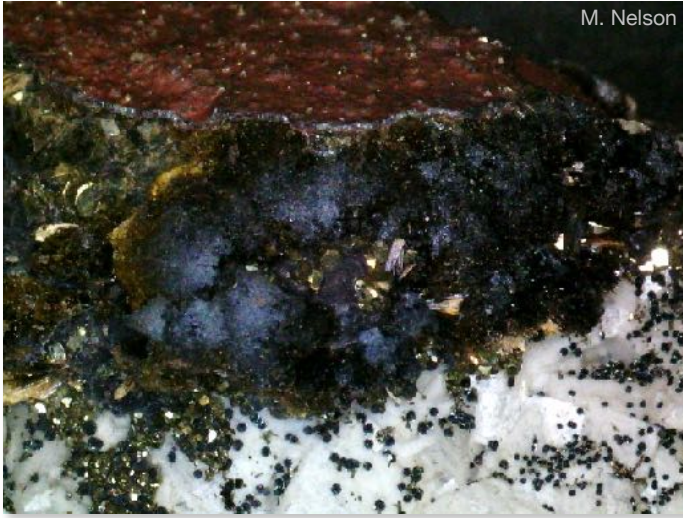
There are also: 1) numerous well-formed pyrite crystals mixed in with the micro balls; 2) a single large calcite crystal; 3) a few splotches of chalcopyrite; and 4) a hunk of massive, red hematite. All-in-all, it is an attractive specimen.



**Above:** Massive hematite with micro cubes of pyrite. Note sprays of goethite in lower right. Width FOV ~1.7 cm. *Photo: M. Nelson*

Cont pg. 8

**Below:** A grouping of botryoidal goethite with hematite above and calcite and pyrite crystals. Width FOV ~1.7 cm.  
*Photo: M. Nelson*



In order to keep the file size of articles reasonable, I have split information about minerals of the estate sale into several manageable sections. There are more articles scheduled for future newsletters.

*It's not an old book, or a treasure map. Nope.  
Staring up at me was a pile of rocks.*

**- Wendy Mass**

The specimen came from Wawa, Ontario, Canada, a town/township/area located near Lake Superior north of Sault Ste Maria and situated in a rugged, sparsely populated area. Gold and iron mines and prospects dot the area and today there seems to be a mini gold rush in progress. The kimberlites in the area have produced diamonds and they also attract prospectors. As best I can determine the bedrock is Archean (old Precambrian).

The specimen has an old, typed label from *Wallings Collector, Westbury, L.I., NY*. The address seems to indicate pre-Zip Code days, so evidently it was collected before 1963.

Unfortunately, my 30 minutes of perusing specimens was “up” much too soon and I was gently herded out the door with my treasures. I decided to return on Sunday and expected empty tables; however, I was pleasantly surprised at available specimens and was attracted immediately to several micro-mounts with a bargain price of 50% discount. More on those later.



# Rocky Mountain High

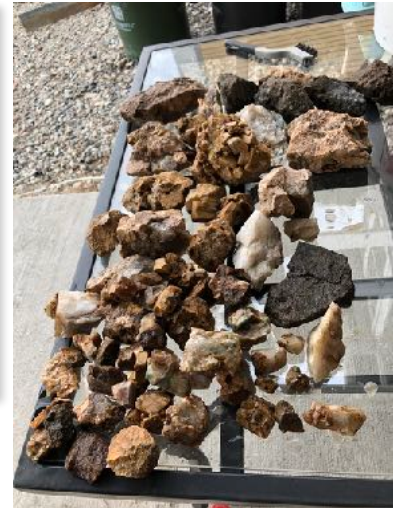
## 26 Sep 20



**Above:** Club member Jerry Anderson's massive haul of Amazonite. *Photo: J. Anderson*



Baby Aspen at the claim. They seem to be turning early.



**Above:** Rookie rock hound John Emery's haul. He needs to get some tips from Jerry.

### Rock Hounds on the Loose

CSMS rock hounds gathered at the CSMS club claims, Rocky Mountain High 1 & 2, 26 Sep 20, a field trip led by CSMS president John Massie. They gathered at Venture Foods in Divide and caravanned to the claim. The finds of the day were smoky quartz and amazonite. Club member Jerry Anderson found some great samples of amazonite. Very windy day, temps in the 60's.



**Above:** Close-up of one of Jerry's Amazonite clusters. *Photo: J. Anderson*



**Above:** Rookie rock hound John Emery found smoky quartz, feldspar and amazonite.

**Below:** Giant chunk of amazonite found by Jerry. *Photo: J. Anderson*



**Below:** Dusty roads at the claim.



**Below:** Rock hounds planning their next move.



## President's Corner

John Massie

## Presidential Matters



### 2020 Satellite Group Chairs

**Kevin Witte/ Bob Germano**, Crystals

**John Massie/ Bertha Medina**, Faceting

**Jerry Suchan/ Joy Price**, Fossils

**Vacant**, Jewelry

**Sharon Holte**, Lapidary

**Vacant**, Micro-mount

**Vacant**, Photography

**Steven Veatch/ Betty Marchant**, Pebble Pups

### 2020 Liaisons

**Florissant Fossil Beds National Monument:**  
Steven Veatch

**Western Museum of Mining and History:**  
Steven Veatch

A message from CSMS president John Massie:

**"Happy Autumn!"**



Artwork: freepik.com



## Pebble Pups

Steven Veatch



## CSMS Pebble Pups and Earth Science Scholars

**NOTICE:** Regular Pebble Pup meetings are **SUSPENDED** until TBD

- Please visit our blog for special announcements and field trips:  
<http://pebblepups.blogspot.com>  
<http://www.csms1936.com>

## National Fossil Day™



**Each year, the Pebble Pups participate in the National Fossil Day by creating original artwork.**

The National Park Service and National Fossil Day partners are sponsoring an art contest to celebrate the 11th annual National Fossil Day. The 2020 National Fossil Day celebration is scheduled for Wednesday, October 14, 2020, during Earth Science Week. The theme for this year's art contest is: "Life of the Paleozoic Oceans!" For this theme we would like contest participants to depict aquatic organisms from the Paleozoic oceans, particularly those found in the United States of America. The Paleozoic era (541 to 250 million years ago) was the earliest of the three geologic eras with diverse life, and is subdivided into six geologic periods: the Cambrian, Ordovician, Silurian, Devonian, Carboniferous, and Permian. The 2020 National Fossil Day logo features a wide variety of sea creatures that formed and lived within a

270 million year old Permian Reef from Glass Mountains and Guadalupe Mountains of Texas and New Mexico.

Please follow this link for more details and how to submit.

<https://www.nps.gov/subjects/fossilday/art-contest-2020.htm>

**Also, please let me know if you are planning to participate.** I will need your artwork scanned and emailed to me. We will publish it in the newsletter. Betty Merchant and I can help you with this. Just let us know. Thanks.

Steve

## Secretary's Spot

Lisa Cooper

## Meeting Minutes

Colorado Springs Mineralogical Society

### 2020 CSMS Officers

**John Massie**, President

**Vacant**, Vice-President

**Lisa Cooper**, Secretary

**Ann Proctor**, Treasurer

**Adelaide Bahr**, Membership Secretary

**John Emery**, Editor

**Chris Burris**, Member-at-Large

**Renee Swanson**, Member-at-Large

**Sharon Holte**, Past President

### 2020 CSMS Chairpersons

**John Massie**, Program Coordinator

**John Massie**, Show Vol Coordinator

**Mike Webb**, Field Trip Coordinator

**Steven Veatch**, Science Fair Chair

**Frank and Ellie Rosenberg**, Librarians

**Mark Schultz**, Social Committee Chair

**Ann Proctor**, Store Keeper

**Lisa Cooper**, Show Chairman

**Lisa Cooper**, Webmaster

**Lisa Cooper**, Facebook Keeper

**Mike Nelson**, Federation Representative

**Vacant**, Federation Representative

No minutes to present at this time

**Hey!** We still need to nominate and elect a 2020 **CSMS Adult Rockhound** of the Year!

- Please refer to the November 2019 issue of the Pick & Pack, page 3. If you do not have a copy, you can access [www.CSMS1936.com](http://www.CSMS1936.com) and go to the Newsletters. Print off a form or two and nominate your best rockhound!!





## **"Code of Ethics"**

A large measure of the enjoyment of our hobby consists of collecting in the field. For that reason, the members are proud to endorse the following:

**I will respect both private and public property and will do no collecting on privately owned land without permission from the owner.**

**I will keep informed on all laws, regulations or rules governing collecting on public lands and will observe them.**

**I will, to the best of my ability, ascertain the boundary lines of property on which I plan to collect.**

**I will use no firearms or blasting material in collecting areas.**

**I will cause no willful damage to property of any kind such as fences, signs, buildings, etc.**

**I will leave all gates as found.**

**I will build fires only in designated or safe places and will be certain they are completely extinguished before leaving the area.**

**I will discard no burning material - matches, cigarettes, etc.**

**I will fill all excavation holes which may be dangerous to livestock.**

**I will not contaminate wells, creeks, or other water supplies.**

**I will cause no willful damage to collecting material and will take home only what I can reasonably use.**

**I will practice conservation and undertake to utilize fully and well the materials I have collected and will recycle my surplus for the pleasure and benefit of others.**

**I will support the rockhound project H.E.L.P. (Help Eliminate Litter Please) and will leave all collecting areas devoid of litter, regardless of how found.**

**I will cooperate with field-trip leaders and those in designated authority in all collecting areas.**

**I will report to my club or federation officers, Bureau of Land Management or other authorities, any deposit of petrified wood or other materials on public lands which should be protected for the enjoyment of future generations for public educational and scientific purposes.**

**I will appreciate and protect our heritage of natural resources.**

**I will observe the "Golden Rule", will use Good Outdoor Manners and will at all times conduct myself in a manner which will add to the stature and Public Image of Rockhounds everywhere.**

**© 1998-2014 American Federation of Mineralogical Societies, Inc.**



**John Emery**  
Editor

No announcements

Thanks to our contributors. We encourage everyone to submit articles, photos, illustrations or observations!

Share your experiences, your new finds, or simply your enjoyment of our last field trip.

Handwrite it, type it, or email it. Format does not matter. All submissions are welcomed. The DEADLINE for items to be included in the next Pick & Pack is the **last day of the month**.

To submit an item:

For hardcopy photos or articles, mail to the address below or bring them to the General Meeting. All hardcopy photos remain the property of the submitter and will be returned. Electronic photos can be submitted at resolutions above 200 dpi in ANY format.

Articles are preferred in MS Word, preferably NOT pdf, but the editor will correct font.

e-mail to the editor:  
[physikker@gmail.com](mailto:physikker@gmail.com)

Mail to:  
Pick & Pack Editor  
PO Box 2  
Colorado Springs, CO 80901

The PICK & PACK is published ten (10) times per year (no issues in January or August). Unless otherwise marked, materials from this publication may be reprinted. Please give credit to the author and CSMS PICK & PACK.





Pick & Pack  
P.O. Box 2  
Colorado Springs, CO 80901-0002

Postage Here



**CSMS is an incorporated nonprofit organization with these goals:**

- To promote and disseminate knowledge of the earth sciences, especially as they relate to mineralogy, lapidary, and fossils.
- To encourage study, collection, and fashioning of minerals.
- To accomplish the same through social meetings, lectures, programs, displays, shows, and field trips.
- The Pick & Pack newsletter is published 10 times each year to assist and promote the above.

**Joining the Colorado Springs Mineralogical Society (CSMS):**

- Meetings are held the third (3rd) Thursday of each month, except January & August.
- 7:00 PM at Mt. Carmel Veterans Service Center; 530 Communication Circle, Colorado Springs, CO 80905
- Visitors are always welcome.
- Individuals—\$30, Family—\$40, Juniors—\$15, Corporate—\$100.
- Find the application at the web site: [www.csms1936.com](http://www.csms1936.com). If you are interested in joining CSMS or would like more information, we encourage you to attend our next General Meeting or visit our web site.

**Meetings:**

CSMS also offers Satellite Group meetings that allow more focused attention in specific areas of our members' interests. Our current Satellite Groups consist of the following: Crystal Study Group, Faceting Group, Fossil Group, Lapidary Group, and Pebble Pups/Juniors. For details on Satellite Group meetings, check out the calendars on page 2 and the web site.

**Membership Benefits:**

Yearly dues include 10 issues of the *PICK & PACK*, all field trips (additional fees may be required on some field trips, and members are responsible for all transportation to and from), participation in all Satellite Groups (some groups may request additional fees to help cover resource costs), free admission to the *Western Museum of Mining & Industry* (carry your card), a year of learning and enjoyment, plus a lifetime of memories.

**Colorado Springs Mineralogical Society is a Member of the following organizations:**

- American Federation of Mineralogical Societies (AFMS) [www.amfed.org](http://www.amfed.org)
- Rocky Mountain Federation of Mineralogical Societies (RMFMS) [www.rmfmms.org](http://www.rmfmms.org)