

THE BULLETIN OF THE COLORADO SPRINGS MINERALOGICAL SOCIETY Published Since 1960

Colorado Springs  
Mineralogical Society  
*Founded in 1936*  
Lazard Cahn  
Honorary President  
December 2019  
**PICK & PACK**  
Vol 59 Number 10

## CSMS General Assembly



**Thursday, December 19,  
7:00 PM**



**CHRISTMAS PARTY!!!**

**PLEASE SEE THE "FOOD SCHEDULE" BELOW TO ENSURE WE CAN ENJOY THE WIDEST VARIETY OF DISHES!**

**\*\*In case of inclement weather please call\*\***

**Mt. Carmel Veteran's Service Center 719 309-4714**

### INSIDE THIS ISSUE:

Calendar of Events	Pg 2
Brad's Bench Tips	Pg 4
Denver Area Mineral Dealers Show Pictures	Pg 5
Pebble Pups Corner	Pg 6
Hambergite, Kleinite, Lamprophyllite: Mike Nelson	Pg 7
Secretary's Spot	Pg10
CSMS Membership Application 2020	Pg12
Classifieds & Announcements	Pg15

The Christmas Party is scheduled for Thursday, December 19 @ 7:00pm at Mt Carmel. CSMS will provide meat, drinks, paper-ware and cranberries.

There will be a gift exchange taking place as well—please bring a wrapped \$5—\$15 valued hobby-related item to participate!

Members whose last names start with the following letters will provide side dishes according to this schedule:

- A-G Salad**
- H-L Dessert**
- M-R Starches (bread, potatoes, rice)**
- S- Z Fruits & Vegetables**



COLORADO SPRINGS MINERALOGICAL SOCIETY PO BOX 2 COLORADO SPRINGS, COLORADO 80901-0002

# CSMS Calendar

## December 2019 & January 2020

Thu.	<b>Dec 5, Jan 2</b>	-----	<b>Board Meeting</b>	7p.m., Pikes Peak United Methodist Church
Tue.	<b>Dec 3, Jan 7</b>	-----	<b>Fossil Group</b>	7p.m., Methodist Church, Jerry Suchan, 303 648-3410
Thu.	<b>Dec 19, Jan 16</b>	----	<b>Pebble Pups, Jrs</b>	5:30p.m., Mt. Carmel Ctr., Steve Veatch, 719 748-5010
Thu.	<b>Jan 16</b>	-----	<b>General Assembly</b>	7p.m., 1970 Waynoka Rd Golden Corral
Thu.	<b>Jan 23</b>	-----	<b>Crystal Group</b>	7p.m., Mt Carmel Ctr. Kevin Witte, 719 638-7919
Thu.	<b>Jan 23</b>	-----	<b>Faceting Group</b>	7p.m., Home of Bertha Medina Contact John Massie 719 338- 4276
	ppointment Only	-----	<b>Lapidary Group</b>	Sharon Holte, 719 217-5683

For more information on any of the sub-groups, meetings, and other CSMS valuable information, go to our website: [www.csms1936.com](http://www.csms1936.com)

## Upcoming Events of Interest to CSMS Members

Submitted by Pete Modreski

**Wed., Dec. 4, 4:00 p.m., CU Geological Science Colloquium, Bighorn River geomorphic mapping and sediment tracers**, by Melissa Foster, U.S. Bureau of Reclamation. Benson Earth Sciences Auditorium (180). "All talks are held in the [Benson Earth Sciences Auditorium \(180\)](#) every Wednesday at 4:00 pm unless otherwise noted. All colloquia are open to everyone. After colloquium, a social hour with snacks, beer, and non-alcoholic drinks will be held in Benson 185. Social hour is a great opportunity to discuss the colloquium with your peers and ask the speaker any lingering questions."

**Sat., Dec. 7, 2:30-5:30 p.m., WIPS (Western Interior Paleontological Society) Annual Auction Fundraiser**, Clements Center, 1580 Yarrow St., Lakewood. All are welcome.

**Sat.-Sun., Dec. 7-8, 10 a.m. – 5 p.m., David Bunk Minerals, Open House & Sale**, at Dave's mineral gallery and Gloria Staebler's "Lithos" shop with books, minerals, fossils, meteorites, and earth science educational items. In Olde Town Arvada, 5695 Yukon St., Arvada.

**Tues., Dec. 10, 6:30 p.m., "Funiculars of Golden Colorado"**, by Barb Warden, [goldentoday.com](http://goldentoday.com); at "Golden Beer Talks" at the Buffalo Rose, 1119 Washington Ave., Golden. For more info see <http://goldenbeertalks.org/>

**Tues., Dec. 10, 6:30 p.m., Denver Café Scientifique 1 at Blake St. Tavern**, 2301 Blake St., Denver, "Nuclear Fission: Steady electricity without carbon, but is it worth the radioactivity?", Jerry Peterson, PhD, Emeritus Professor of Physics, University of Colorado Boulder. See <https://coloradocafesci.org/>.

**Tues., Dec. 10, 5:00-7:30 p.m., "Beer for Water"**; Join WEco (Water Education Colorado) for a drink, a game of water trivia, and a celebration, at Jagged Mountain Brewery, 1139 20<sup>th</sup> St., Denver. For every beer sold, Jagged Mountain will donate \$1 to WEco. Celebrating:

-The one-year anniversary of [Fresh Water News](#) in July

-The regular publication of Headwaters magazine, with a [new issue](#) focused on Drought Contingency Planning in the

---

## Colorado River Basin

-The new [Citizen's Guide to Where Your Water Comes From](#)

To RSVP or for more info, see <https://www.watereducationcolorado.org/beer-for-water-2019/>

**Fri.-Sat.-Sun., Dec. 13-15, Flatirons Gem & Mineral Show, “Rocks & Rails”**, Boulder County Fairgrounds, 9595 Nelson Rd., Longmont CO, Main Exhibit Building. 10 a.m. – 5 p.m. each day. Held in conjunction with the Boulder County Model Railroad Club Show. *We'll have a USGS booth here—with free topo maps—use them for gift-wrapping, or whatever you like!*

**Thurs., Dec. 19, 5:30 p.m., Colorado Scientific Society Annual Meeting**, 2019 President's Address (Tom Casadevall, USGS), and potluck dinner. Featuring ***“Geological heritage: a new frontier for the Earth Sciences”*** (or something related to that topic) by Dr. Tom Casadevall, Scientist Emeritus, U.S. Geological Survey, and 2019 CSS President. Shepherd of the Hills Church, 11500 W. 20<sup>th</sup> Ave., Lakewood. All are welcome. It's a good time to come and join the Society! Regular dues are \$20 if paid before Jan. 30. For more info, see <https://coloscisoc.org/> .

\*\*\*\*\*

## **Adult CSMS Rock Hound of the Year**

CSMS is in the process of selecting an Adult Rock Hound of the Year. Since there is no deadline, this will be handled at the February Meeting.

## **Election of CSMS Board of Directors:**

Currently we have:

**John Massie, President**

**Richard Cook, Vice President**

**Ann Proctor, Treasurer**

**Editor, OPEN, WE REALLY NEED TO FILL THIS POSITION, This is a very critical position!**

**Secretary, OPEN, WE REALLY NEED TO FILL THIS POSITION**

**Membership Secretary, Adelaide Bahr**

**Member at Large, Renee Swanson**

**Member at Large, Chris Burris**

**Past President, Sharon Holte**

We really need several members to step up and help with the open positions. As Sharon has announced, she will need to cut back on her availability for several months. Please consider the vacant positions as a possible way you can contribute to our society and our hobby.

I'd like to take this opportunity to thank all who have served on the Board of Directors for 2018 and 2019. The Board members really do a tremendous job. Thank You!!! Sharon Holte

## **BRAD'S BENCH TIPS**

As a rockhound myself, I am pleased to be able to share material like this with other clubs. Hopefully the tips are of interest to your members and provide a bit of fresh content for your bulletin. I've been involved with lapidary and jewelry making in my own rock club for about twenty-three years now. It has added so much to my own life, and I have been glad to do a few things to help build membership and promote sister clubs in my area.

Wishing you and yours a happy holiday season.  
Happy hammering,

- Brad

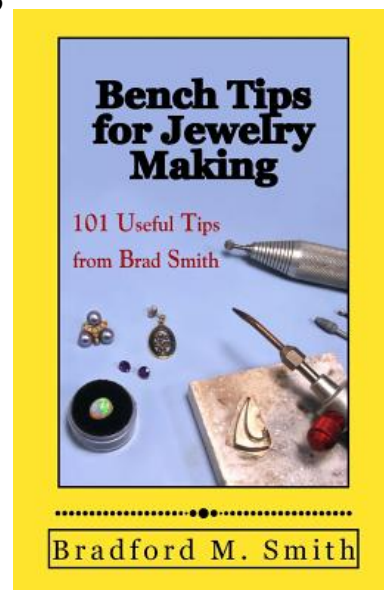
---

### **DIVIDERS**

A set of dividers is a tool I find very useful in laying out the geometry of a piece I'm making. It has two needle-like tips with an adjustment to set the spacing between them. They can be used to transfer a measurement. Let's say you need a 7mm wide strip of sheet metal. Set the spacing between the divider tips to 7 mm on the ruler. Then lay the sheet on the bench, put one tip against the edge, and run the dividers down the edge scribing a line parallel to the edge.



Dividers can be used to mark equal segments of a line or arc. For instance, assume a line between A and B that might be straight or curved, and you want to divide it into 5 equal lengths. Set the dividers to an estimate of the distance. Starting at Point A, use the dividers to mark off five lengths along the line. If you end up short of Point B, lengthen the distance on the dividers. If you end up overshooting Point B, shorten the length of your dividers. After a few tries, the length on the dividers will be the exact distance you need to mark the 5 segments.



Dividers can let you quickly find the center of a circular disk. With one tip of the dividers at the edge of the disk, set the other tip to an estimate of where the center might be. Fix one tip of the dividers at the 3 o'clock position and scribe an arc with the other tip near the center. Do this again from the 6 o'clock, 9 o'clock, and 12 o'clock positions. The arcs at the center will form a small four-sided box, and the center of the box is at the center of the disk.

-----

With the holidays coming up soon, one of Brad's "How To" jewelry books is a great way to help a friend learn a few new skills.

See all the books at: [Amazon.com/author/bradfordsmith](https://www.amazon.com/author/bradfordsmith)

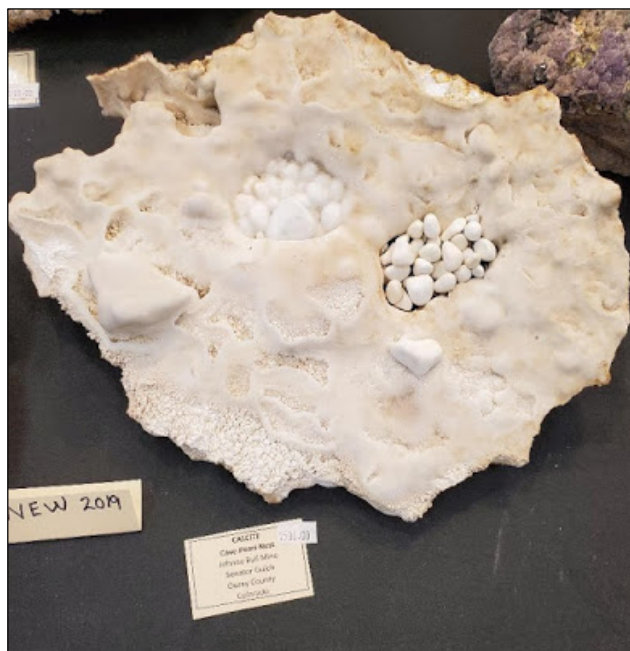


# **DENVER AREA MINERAL**

## **DEALERS SPRING SHOW 2019**

Mike Nelson

csrockguy@yahoo.com



**ABOVE:** The most unique specimen in the Show: Cave pearl nest, Ouray County, Colorado.

The Denver Area Mineral Dealers held their fall 2019 Gem and Mineral Show at the Jefferson County Fairgrounds on November 15-17. I have attended this event for the last several years; however, I was rather underwhelmed this fall. I thought the number of dealers decreased this year and some of those in attendance had decreased the size of their offerings. In addition, the Friday buyers seemed low in numbers, especially for a free show. However, every rock and mineral show represents a “good day” and I enjoyed my time visiting with the dealers and coming home with a couple of purchases.

At a show like this, an event that attracts all types of collectors and buyers, one sees the same common minerals over and over—how many South American amethyst crystals are for sale?



**ABOVE:** The most unique name for a mineral dealer: O'Dark Thirty Boyz Mining.

**BELOW:** Joe and Susan Dorris of Pinnacle 5 Minerals out of Colorado Springs brought a great display of amazonite, smoky quartz, topaz and jewelry.



Therefore, I gravitate to dealers who often have some nice, rather uncommon, mineral specimens that are offered at a reasonable price (at least what I consider reasonable). Dan, of Dan's Used Rocks, is one of those dealers where I enjoy perusing his specimens, especially the thumbnails.

***(CONTINUED ON PAGE 7)***



## PEBBLE PUPS CORNER



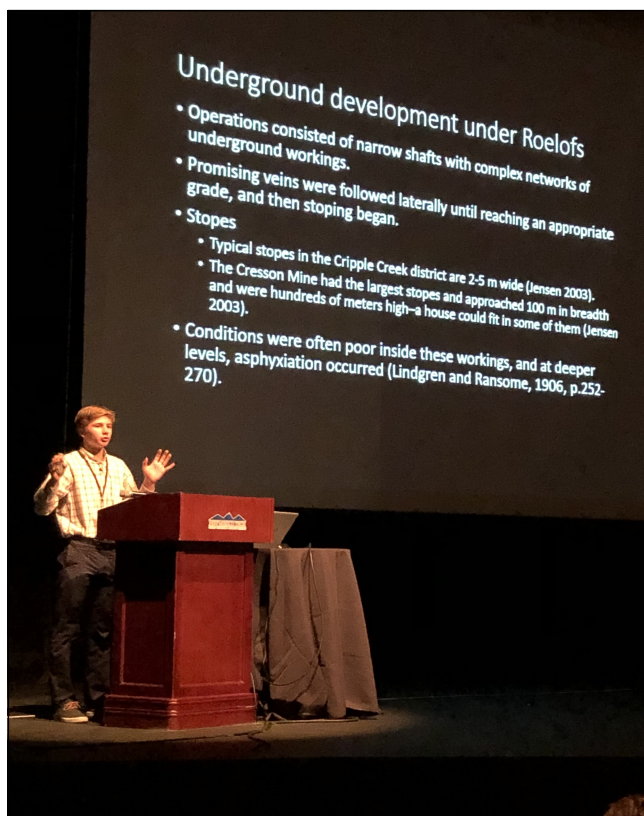
## CSMS Pebble Pups & Earth Science Scholars

The Earth Science Scholars & Pebble Pups meet at the Mt. Carmel Veterans Center every THIRD Thursday at 5:30 PM until 6:15 PM or so. We only meet during the academic year, and we include January. So, it is Sept through May.

Special announcements and field trips are noted on our blog:

<http://pebblepups.blogspot.com>

and through the CSMS website: <http://www.csms1936.com>



Ben Elick, CSMS junior member, presented a paper at the 40th annual New Mexico Mineral Symposium at Socorro, New Mexico on November 9, 2019. He spoke on the Cresson Mine of Cripple Creek, Colorado. In conjunction with his presentation, Ben set up a case with rock and minerals from the Cresson Mine. Participants were able to view the case for the two days of the symposium. His presentation was hailed as one of the top presentations of the weekend symposium!



We are very fortunate to have such a talented junior member among our ranks!

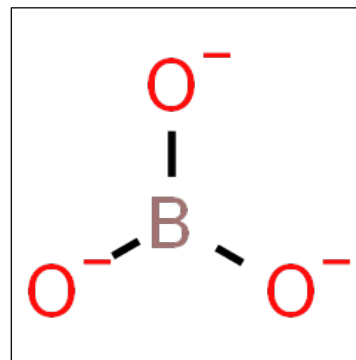


**ABOVE:** Buyers cluster around the thumbnails at Dan's Used Rocks

Although I am fairly new to mineral collecting, I attend several shows per year but have never seen specimens of hambergite, kleinite or lamprophyllite “for sale.” I am certain that more serious collectors would sort of chuckle and say something like “newbie, look a little harder.” But, I found these minerals interesting and they came home with me!

Hambergite is “an especially rare and unusual collector’s stone...and a lesser-known gemstone mineral although it was first described from a nepheline syenite in Norway. The orthoborate ion ( $\text{BO}_3$ ) of hambergite is the simplest of the element’s different ions. It has three oxygen atoms surrounding a central boron atom in the shape of a triangle. Each of these ions can then share the oxygen atoms of other “triangles” and form larger units. The boron atom has an oxidation charge of 3+ while each oxygen atom (3 total) has an oxidation number of 2- so the total orthoborate ion has a total charge of 3- and is an anion.

Hambergite is an orthorhombic mineral where crystals are usually prismatic (long) with good cleavage, and white (often with a pale-yellow sheen) to colorless (the rare gem variety). It has a vitreous luster, a white streak and is transparent (colorless variety) to translucent (white variety). It is very brittle, quite hard at ~7.5 (Mohs), commonly striated along the prisms, and some crystals are terminated.



**ABOVE:** The orthoborate ion as drawn by chemspider.com. Each oxygen has an oxidation number of 2- while the boron has an oxidation number of 3+. ( $\text{BO}_3$ ).

The hydroxyl [ $\text{(OH)}$ ] is also an anion with a total oxidation number of 1- since the hydrogen is a 1+ and the oxygen a 2-. Each beryllium atom, there are two of them, has an oxidation number of 2+ for a total of 4+ for the cation. That 4+ balances the 3- and 1- for the two anions. There, I have just been practicing my limited knowledge of chemistry trying to learn a wee bit more!



**ABOVE:** Partial crystal of hambergite. Width of crystal is ~1 cm. The unseen “thickness” is ~4 mm. Terminations of hambergite commonly are etched.

**(CONTINUED ON PAGE 8)**



**BELOW:** Striations noted parallel to long C Axis. The etching of the termination shows clearly.



The specimen I acquired is a rather flattened, white, striated, prismatic crystal that is not terminated. It was collected near Rangkul in the region of Gorno-Badakhshan in Tajikistan. I just cannot find out much information about the geology of Rangkul except that it is in the high plateaus located in the Pamir Mountains, a region of tectonic plates activity. My guess is that the hambergite formed in miarolitic cavities in the Mika pegmatite along with lepidolite, microcline, albite, quartz, schorl, elbaite, topaz, muscovite, apatite, fluorite, calcite, barite, beryl, and cassiterite (Jambor and others, 2000).

More than 50% of Tajikistan is above 10,000 feet in elevation.

I was not overly familiar with the Kola Peninsula except to realize that it was a hunk of land in extreme northwestern Russia above the Arctic Circle bordering northern Finland. I now realize that the Peninsula is part of the Baltic Shield, a now stable area where rocks underwent extensive mountain building events during the 2.5-2.0 Ga Lapland-Karelian-Kola Orogen (Precambrian). The Kola Peninsula is also an important ore base for Russia's metallurgy industry. It is very rich in titanium, apatite, nephelines, copper, nickel, mica, kyanite, iron ore, and other precious metals and rare-earth elements (Mitrofanov and others, 1995).

So, I have a specimen of lamprophyllite from the

Murmansk (the capital) Oblast (an official district or province) in the Kola Peninsula (a geographical term). The mineral is a titanium silicate with a chemical formula that is amazing:  $[(\text{Na},\text{Mn})_2\text{Ti},\text{Fe})_3(\text{Si}_2\text{O}_7)_2\text{O}_2(\text{OH},\text{O},\text{F})_2]$ . The mineral is yellow to yellow brown to brown and the crystals are usually acicular (needle-like) radiating from a center. The crystals are flattened and belong to the Monoclinic Crystal System (3 axes of unequal length). They are translucent, very brittle and leave a brownish white streak on unglazed porcelain. Crystals are very soft at ~2.5 (Mohs) and have a luster ranging from vitreous to pearly. The name, pyrophyllite, comes from the shiny cleavage planes parallel to the prisms.



**ABOVE:** Acicular crystals of lamprophyllite showing cleavage planes parallel to long axes. Width FOV ~1 cm.

**BELOW:** Crystals of lamprophyllite radiating from a common point, the typical arrangement of the mineral. Width FOV ~1.7 cm.

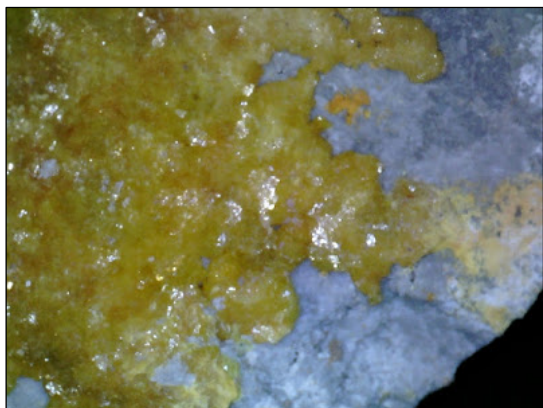


(CONTINUED ON PAGE 9)

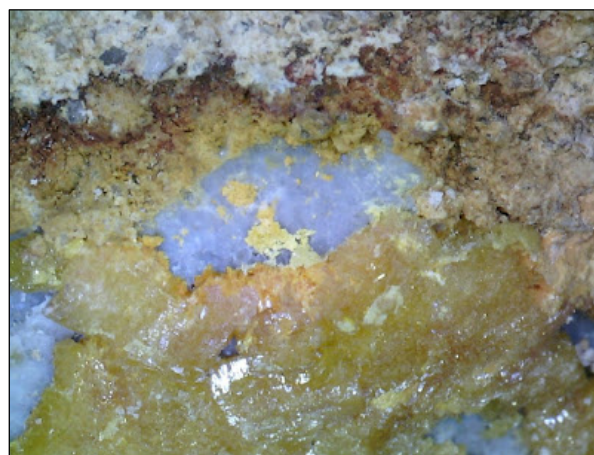


Oblast (a mountain range named the Lovozero Massif) is found in extrusive rocks indicative of volcanoes in a continental rift basin. These rocks are termed peralkaline and are very deficient in aluminum with abundant sodium-rich pyroxene and amphibole minerals. The Massif rocks seem to be rich in obscure minerals such as pyrophyllite and rare earth minerals. As Mindat notes, pyrophyllite is found at the Gem Park Complex in Fremont County, Colorado, an area previously mined for rare earth elements in an intrusive dike.

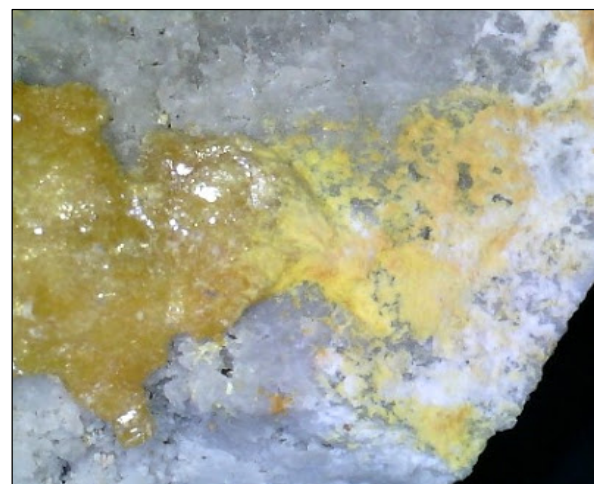
Kleinite is a rather rare mineral that is only found in three localities around the world—Germany, Texas and Nevada. The best known of these locations is the McDermitt Mine, Opalite District, Humboldt County, Nevada. The McDermitt is just one of several mines that are located in the Opalite Mercury Mining District that straddles the Nevada-Oregon State Line. The District is associated with a volcanic caldera complex where eruption centered around a Miocene age of ~16 Ma (Henry and others, 2016). The original mercury mineralization was in the Cordero Rhyolite, but later hydrothermal action deposited the metal into nearby lake or stream-deposited tuff (volcanic ejecta) (Henry and others, 2016). Mercury in the caldera complex was first mined in the 1970s and the operations ceased in 1990. Porter GeoConsultancy noted that the McDermitt Mine was the most important mercury producer in the Americas during the 20<sup>th</sup> century producing 279,000 flasks to 1988 (geoconsultancy.com.au). The minerals cinnabar (mercury sulfide HgS) and corderoite (mercury sulfide chloride  $\text{Hg}_3\text{S}_2\text{Cl}_2$ ) yielded almost all of the mercury; kleinite was just an insignificant rare accessory mineral.



**ABOVE:** Bright yellow to orange adamantine kleinite. Width FOV ~1.9 cm. Note "earthy" crust in right central.



**ABOVE:** Lower half of photo is kleinite. The blue-purple is opal. I remain uncertain about the crust in the top half. Width FOV 2.2 cm.



**ABOVE:** Same situation as above. Adamantine kleinite on left with yellow crust on right. Is the crust kleinite? Or is it another mercury mineral? Width FOV ~1.3 cm.

So, kleinite is sort of the lost kid at the mercury mines and is quite rare. The crystals have a vibrant yellow (canary) color ranging to light yellow—often on the same specimen. If left in the daylight the color transforms to orange or reddish yellow; hide the specimen in a dark box and the original color comes back. It has a yellow streak and is soft at ~3.5 (Mohs). Crystals are short prismatic and hexagonal, although not equidimensional. Kleinite can also occur as a "crust" with a massive appearance. Crystals appear to be translucent rather than transparent; I would call the "crust" opaque. The luster ranges from adamantine to greasy/earthy. There is also a distinct possibility that the earthy crust

**(CONTINUED ON PAGE 11)**

<p><b>2019 CSMS OFFICE</b></p> <p>Sharon Holte, President</p> <p>John Massie, Vice-President</p> <p>OPEN, Secretary</p> <p>Ann Proctor, Treasurer</p> <p>Adelaide Bahr, Membership Secretary</p> <p>Taylor Harper, Editor</p> <p>Laurann Briding, Member-at-Large</p> <p>OPEN, Member-at-Large</p> <p>Ernie Hanlon, Past President</p>	<p><b>SECRETARY'S SPOT</b> by Adelaide Bahr</p>	<p><b>General Meeting Minutes for the Colorado Springs Mineralogical Society - 11/21/2019</b></p>
<p><b>2019 CSMS CHAIRPERSONS</b></p> <p>John Massie, Program Coordinator</p> <p>John Massie, Show Volunteer Coordinator</p> <p>Mike Webb, Field Trip Coordinator</p> <p>Steven Veatch, Science Fair Chair</p> <p>Frank &amp; Ellie Rosenberg, Librarians</p> <p>Mark Schultz, Social Committee Chair</p> <p>Ann Proctor, Store Keeper</p> <p>Lisa Kinder, Show Chairman</p> <p>Lisa Kinder, Webmaster</p> <p>Lisa Kinder, Facebook Keeper</p> <p>Mike Nelson, Federation Representative</p> <p>TBD, Federation Representative</p>	<p>CSMS General Assembly Meeting Minutes</p> <p>Thursday: Nov 21, 2019 Time: 7:00 p.m.</p> <p>At: Mt. Carmel Veterans Service Center</p> <p>Address: 530 Communications Circle Colorado Springs, CO 80905</p> <p>Agenda</p> <ol style="list-style-type: none"> <li>I. Sharon Holte called the meeting to order, at 7:00 p.m</li> <li>II. John Massey directed the Pledge of Allegiance</li> <li>III. Introduction of guests – John Massey introduced Jim Geyer from Monument</li> <li>IV. Introduction of new members - Adelaide Bahr, Membership Secretary said we have no new members</li> <li>V. Introduction of Program - John Massie introduced Mike Nelson who presented an interesting and wide ranging survey of the Geology of Colorado</li> <li>VI. Break for 20 minutes: drinks, cookies and goodies, 5 door prizes were handed out</li> <li>VII. Sharon Holte announced that since it was an icy, snowy night and there were only 11 members present, we did not have a quorum. She deferred the business meeting until the Christmas Party</li> <li>VIII. The meeting was adjourned by the President, Sharon Holte,</li> </ol>	



### **2019 SATELLITE GROUP CHAIRPERSONS**

**Crystal, Kevin Witte/Bob Germano**

**Faceting, John Massie/Bertha Medina**

**Fossil, Jerry Suchan/Joyce Price**

**Jewelry, OPEN**

**Lapidary, Sharon Holte**

**Pebble Pups, Steven Veatch/  
Betty Marchant**

### **2019 CSMS LIAISONS**

**Florissant Fossil Beds**

**National Monument, Steven Veatch**

**Western Museum of**

**Mining & Industry, Steven Veatch**

**(CONTINUED FROM PAGE 9)**

may not be kleinite but one of the other rare mercury minerals present in the District. I simply do not have the skills to call the shot.

## **REFERENCES CITED**

Henry, C. D., S. B. Castor, W.A. Starkel, B.S. Ellis, J.A. Wolff, W.C. McIntosh, M.T. Heizler, 2016, Preliminary geologic map of the McDermitt caldera, Humboldt County, Nevada and Harney and Malheur counties, Oregon. Nevada Bureau of Mines and Geology Open-File Report 16-1.

Jambor, J.L., E.S. Grew, A.C. Roberts, 2000, New Mineral Names: American Mineralogist v. 85.

Mitrofanov, F.P., V.I. Pozhilenko, V.F. Smolkin, A.A. Arzamastsev, V. Ya. Yevzerov, V.V. Lyubtsov, E. CV. Shipilov, S.B. Nikolayeva, Zh. A. Fedotov. (Edited by F.P.Mitrofanov), 1995: Geology of the Kola Peninsula: Apatity.

A TIDBIT FOR THOUGHT: Members are the life-blood of the CSMS. The officers are the brain that

makes the organization move in the right direction. The Show Director, Field Trip Coordinator, and Webmaster represent the legs that muscle the club so that it stands out to the community. But the heart of CSMS is the Editor of the *Pick n Pack*.

I have been writing for the *Pick n Pack* for over a decade and had the privilege and joy of working with a number of editors who have produced an excellent product. I would estimate that in the last ten years the *Pick n Pack* editors and writers have garnered more awards in the RMFMS and AFMS than any club in the Federation. I want to take this opportunity to thank the current editor, Taylor Harper, for his yeoman's work during this last year. Unfortunately Taylor is leaving his editorial post at the end of the year (work related). Thank you, Taylor, and I will miss you.





# Colorado Springs Mineralogical Society

Post Office Box 2, Colorado Springs, CO 80901

[www.csms1936.com](http://www.csms1936.com)

## 2020 APPLICATION FOR MEMBERSHIP

LAST	<input type="text"/>	FIRST	<input type="text"/>	MIDDLE	<input type="text"/>
SPOUSE	<input type="text"/>	Child (Name):	<input type="text"/>	Age:	<input type="text"/> GRADE <input type="text"/>
		Child (Name):	<input type="text"/>	Age:	<input type="text"/> GRADE <input type="text"/>
STREET	<input type="text"/>		CITY	<input type="text"/>	
STATE	<input type="text"/>	ZIP	<input type="text"/>	EMAIL	<input type="text"/>
CELL	<input type="text"/>		HOME PHONE	<input type="text"/>	

Have you previously been a member of the CSMS? YES ☐ NO ☐ WHEN

Do you want your name and contact information published in the CSMS Membership Directory, distributed only to members? YES ☐ NO ☐

My photo may be used in the CSMS Publication "The Pick & Pack" YES or NO.

	New / Continuing Members		New Members Only	
	Before Jan 31	After Jan 31	After June 30 Oct 1 –Jan following year	
<input type="checkbox"/> Pebble Pup Membership (4 – 12 years old and parent is not a member)	<input type="checkbox"/> \$10.00	<input type="checkbox"/> \$15.00	<input type="checkbox"/> \$ 7.50	<input type="checkbox"/> \$10.00
<input type="checkbox"/> Junior (Membership (12 –17 year old and parent is not a member)	<input type="checkbox"/> \$10.00	<input type="checkbox"/> \$15.00	<input type="checkbox"/> \$ 7.50	<input type="checkbox"/> \$10.00
<input type="checkbox"/> Individual Membership (18 and over)	<input type="checkbox"/> \$25.00	<input type="checkbox"/> \$30.00	<input type="checkbox"/> \$15.00	<input type="checkbox"/> \$25.00
<input type="checkbox"/> Family Membership (2 adults & dependents under 18)	<input type="checkbox"/> \$35.00	<input type="checkbox"/> \$40.00	<input type="checkbox"/> \$20.00	<input type="checkbox"/> \$35.00
<input type="checkbox"/> Corporate Membership (entitles up to five (5) Individual Memberships)	<input type="checkbox"/> \$95.00	<input type="checkbox"/> \$100.00	<input type="checkbox"/> \$50.00	<input type="checkbox"/> \$95.00

SATELLITE GROUPS Please check ALL YOU MAY BE INTERESTED IN JOINING Fill out each year, please!!!		
PEBBLE PUPS <input type="checkbox"/>	FACETING <input type="checkbox"/>	LAPIDARY <input type="checkbox"/>
JUNIORS <input type="checkbox"/>	FOSSILS <input type="checkbox"/>	PHOTOGRAPHY <input type="checkbox"/>
CRYSTAL <input type="checkbox"/>	JEWELRY <input type="checkbox"/>	OTHER <input type="checkbox"/>
Other: <input type="text"/>		
VOLUNTEER OPPORTUNITIES ! VOLUNTEERS ARE WHAT MAKE OUR CLUB! Fill out each year!!!		
GUEST SPEAKER <input type="checkbox"/>	FIELD TRIPS <input type="checkbox"/>	EDITOR/WRITING <input type="checkbox"/>
CLUB OFFICER <input type="checkbox"/>	LOCAL ROCK SHOWS <input type="checkbox"/>	LIBRARY <input type="checkbox"/>
HISTORIAN <input type="checkbox"/>	ARTIST/MEDIA <input type="checkbox"/>	REFRESHMENTS <input type="checkbox"/>
List any other things you may be willing to do: <input type="text"/>		

I hereby agree to abide by the Constitution and By-Laws of the Colorado Springs Mineralogical Society [http://www.csms1936.com/wp-content/uploads/2017/02/Constitution\\_and\\_By\\_Laws.pdf](http://www.csms1936.com/wp-content/uploads/2017/02/Constitution_and_By_Laws.pdf) . I have read the membership information as well as the request and waiver for field trips on page 2. I understand that all members must sign a separate waiver at each field trip to participate. I agree to abide by the American Federation of Mineralogical Societies (AFMS) Code of Ethics <http://www.amfed.org/ethics.htm>.

Signature of Primary Applicant or Guardian if Minor

Application Date:

Mail this form and your payment to: Colorado Springs Mineralogical Society, PO Box 2, Colorado Springs, CO 80901

Membership Chair: Rev: 12/15/19



## CSMS Application Page 2- Membership information page and Waiver/ Release to participate in Field Trips.

- Membership to CSMS is annual, from January 1<sup>st</sup> to December 31<sup>st</sup>. Membership dues **MUST** accompany this application, which **MUST** be filled out each year.
- Members must abide by the CSMS Constitution and By-Laws, located on the web at: [http://www.csms1936.com/wp-content/uploads/2017/02/Constitution\\_and\\_By\\_Laws.pdf](http://www.csms1936.com/wp-content/uploads/2017/02/Constitution_and_By_Laws.pdf)
- Members in good standing receive the following benefits: 10 electronic issues of the CSMS *Pick&Pack* newsletter, right to participate in all field trips (additional fees may be required on some field trips and members are responsible for all transportation to and from), participation in one or all Satellite Groups (some groups may request additional fees to help cover resource costs), free admission to the Western Museum of Mining and Industry, a year of learning and enjoyment, plus a lifetime of memories. The Pebble Pup program is a satellite program.
- Continuing memberships must pay full-year dues; a \$5 discount can be applied to renewals on or before January 31<sup>st</sup>. Anyone who has previously been a member **MUST** pay the full rate each year **REGARDLESS** of the time of the year they pay their dues.
- A person, family, or corporation joining the CSMS as a new member after June 30<sup>th</sup> shall pay half the yearly membership rate. A person joining CSMS as a new member after October 1<sup>st</sup> receives the rest of the current year plus the next year's membership. The partial year membership shall not apply toward the 25 year Lifetime Membership.
- Members who have paid their dues for 25 years will be awarded a Lifetime Membership on their 26<sup>th</sup> year. Lifetime Members receive all of the CSMS benefits and no longer have to pay the annual dues. Individual Memberships provided by Corporate Membership are excluded from Lifetime Status. Corporate membership grants up to 5 individual memberships and one yearly (10 issues) 3.5" x 2" advertisement in the CSMS Pick & Pack.

### Release by Participants from Claims Arising By Virtue of Mineral Collecting

Led By Field Trip Leader of the Colorado Springs Mineralogical Society,

A Non-Profit Corporation – Member: Rocky Mountain Federation of Mineralogical Societies

- I/we, the undersigned, hereby request permission to participate in mineral collecting led by the Field Trip Leader of the [Colorado Springs Mineralogical Society](#), a non-profit corporation.
- I/we know the risks and danger involved in such activities and that unanticipated and unexpected dangers may arise during such activities, and I/we assume all risks of injury to my / our persons and properties that may be sustained in connection with the stated and associated activities in and around the premises.
- In consideration of the permission granted to me/our participation in the stated activities, I/ we hereby for myself, my heirs, administrators, and assigns release to the [Colorado Springs Mineralogical Society](#) and the [Rocky Mountain Federation of Mineralogical Societies](#), and their representatives, servants, agents, officers and officials and all other participants in the stated activities of and from all claims, demands actions and causes of actions of any sort, for injuries sustained to my/our person and/or property during my presence on the premises and participation in the stated activities due to negligence or any other fault.

A large measure of the enjoyment of our hobby consists of collecting in the field. For that reason, the members are proud to endorse the following:



## **CODE OF ETHICS**

- I will respect both private and public property and will do no collecting on privately owned land without permission from the owner.
- I will keep informed on all laws, regulations or rules governing collecting on public lands and will observe them.
- I will, to the best of my ability, ascertain the boundary lines of property on which I plan to collect.
- I will use no firearms or blasting material in collecting areas.
- I will cause no willful damage to property of any kind such as fences, signs, buildings, etc.
- I will leave all gates as found.
- I will build fires only in designated or safe places and will be certain they are completely extinguished before leaving the area.
- I will discard no burning material - matches, cigarettes, etc.
- I will fill all excavation holes which may be dangerous to livestock.
- I will not contaminate wells, creeks, or other water supplies.
- I will cause no willful damage to collecting material and will take home only what I can reasonably use.
- I will practice conservation and undertake to utilize fully and well the materials I have collected and will recycle my surplus for the pleasure and benefit of others.
- I will support the rockhound project H.E.L.P. (Help Eliminate Litter Please) and will leave all collecting areas devoid of litter, regardless of how found.
- I will cooperate with field-trip leaders and those in designated authority in all collecting areas.
- I will report to my club or federation officers, Bureau of Land Management or other authorities, any deposit of petrified wood or other materials on public lands which should be protected for the enjoyment of future generations for public educational and scientific purposes.
- I will appreciate and protect our heritage of natural resources.
- I will observe the "Golden Rule", will use Good Outdoor Manners and will at all times conduct myself in a manner which will add to the stature and Public Image of Rockhounds everywhere.

© 1998-2014 American Federation of Mineralogical Societies, Inc.



## Our Staff...

**Taylor Harper—Editor**

We encourage everyone to submit articles, photos, illustrations or observations.

Share your experiences, your new finds, or simply your enjoyment of our last field trip.

Handwrite it, type it, or email it. Format does not matter. All submissions are welcomed. The DEADLINE for items to be included in the next Pick & Pack is the **20th of the preceeding-month**

To submit an item:

For hardcopy photos or articles, mail to the address below or bring them to the General Meeting. All hardcopy photos remain the property of the submitter and will be returned. Electronic photos can be submitted at resolutions above 200 dpi in ANY format.

Articles are preferred in MS Publisher, but the editor will correct font.

E-Mail to:

[csmseditor@hotmail.com](mailto:csmseditor@hotmail.com)

Mail to:

Pick & Pack Editor

PO Box 2

Colorado Springs, CO 80901

The PICK&PACK is published ten (10) times per year (no issues in January or August). Unless otherwise marked, materials from this publication may be reprinted. Please give credit to the author and CSMS PICK & PACK.

## CSMS

**T-Shirts, Badges, and Pins** are available for sale.

If you celebrated a CSMS anniversary in 2017 or 2018, you are eligible for your one year pin award!

Please see Storekeeper,

**Ann Proctor**

## JEWELRY, GEM & MINERAL SHOW

**Gems**

**Books**

**Displays**

**Minerals**

**Sculptures**

**DEMOS:**

**Flint Knapping**

**Wire Wrapping**

**Fluorescence**

**Polishing**

**Faceting**



**Fossils**

**Geodes**

**Jewelry**

**Crystals**

**Activities for kids**

**DEALERS:**

**Over 20 Sellers**

**Free**

**Admission!**

**February 28 – March 1, 2020**

**Hours: 10-6 Friday & Saturday 10-5 Sunday**

**JEFFERSON COUNTY FAIRGROUNDS**

**15200 W. 6th Ave. – (W. 6th Ave. & Indiana, Golden)**

**No food available onsite; restaurants nearby**

**Grab Bag Sales proceeds applied to scholarship at Colorado School of Mines**

**Sponsored by the DENVER GEM AND MINERAL GUILD**

**[www.denvergem.org](http://www.denvergem.org)**

Photos: Robert Johnson



**PICK&PACK**  
**P.O. Box 2**  
**COLORADO SPRINGS, CO 80901-0002**

Postage Here



**CSMS is an incorporated nonprofit organization with these goals:**

To promote and disseminate knowledge of the earth sciences, especially as they relate to mineralogy, lapidary, and fossils.

To encourage study, collection, and fashioning of minerals.

To accomplish the same through social meetings, lectures, programs, displays, shows, and field trips.

The Pick & Pack is published 10 times each year to assist and promote the above.

**Joining the Colorado Springs Mineralogical Society (CSMS):** Meetings are held the **third (3rd) Thursday of each month**, except January & August, **7:00 p.m.**, at Mt. Carmel Center of Excellence, 530 Communication Circle, Colorado Springs, CO 80905. (Starting (9/21/2017) **Visitors are always welcome.**

CSMS also offers Satellite Group meetings that allow more focused attention in specific areas of our members' interests. Our current Satellite Groups consist of the following: Crystal Study Group, Faceting Group, Fossil Group, Jewelry Group, Lapidary Group, and Pebble Pups/Juniors. For details on Satellite Group meetings, check out the calendars on page 2 and the web site.

Yearly dues include 10 issues of the *PICK&PACK*, all field trips (additional fees may be required on some field trips, and members are responsible for all transportation to and from), participation in all Satellite Groups (some groups may request additional fees to help cover resource costs), free admission to the *Western Museum of Mining & Industry*, a year of learning and enjoyment, plus a lifetime of memories.

Individuals—\$30, Family—\$40, Juniors—\$15, Corporate—\$100, \*\*\*\*\*Application is on the web site.

If you are interested in joining CSMS or would like more information, we encourage you to attend our next General Meeting or visit our web site: [www.csms1936.com](http://www.csms1936.com)

**Colorado Springs Mineralogical Society is a Member of the following organizations:**

American Federation of Mineralogical Societies (AFMS) [www.amfed.org](http://www.amfed.org)

Rocky Mountain Federation of Mineralogical Societies (RMFMS) [www.rmfmts.org](http://www.rmfmts.org)