

PICK&PACK

THE BULLETIN OF THE COLORADO SPRINGS MINERALOGICAL SOCIETY Published Since 1960



PALEONTOLOGICAL RESOURCES ACT REINTRODUCED IN THE HOUSE

BY JIM SPUNAUGLE, ALAA EXEC VP FOR LEG, AFMS, 3/07

IMPORTANT INFO FOR FOSSIL COLLECTORS!!

Editors Note: This information is of such importance to our hobby that we're including the entire AFMS article by Jon Spunaugle. NOW is the time for you to get involved and let your thoughts be known to our Colorado Senators, Congressmen, and US Speaker Pelosi. Your rights to enjoy the "thrill of the find" will be impacted!

On January 18, 2007 a fossil Collecting Bill, HR 554 "Paleontological Resources Preservation Act", was introduced into the US House of Representatives by Congressional Representatives McGovern of MA and Renzi of Arizona. It was sent to the Committees on Natural Resources and Agriculture for a period of time to be determined by the Speaker of the House. (This means that regardless of what the Committee Chair people do, the Bill can be brought to the floor of the US House for a vote at any time with or without amendment or Committee recommendation).

Inside this issue:

Paleontological Resources Act	1
President's Corner	2
Julie Penrose	2
AFMS President	3
Field Trips	3
Upcoming Shows	3
2007 Show Flyer	5
Mini Miners Monthly	6
Display Cases	6
Flatirons Show Info	6
RMFMS President	7
Judges & Exhibitors Seminar	7
Treasurer's Dream	7
Birthstones	8
Matchless Mine	8
America the Beautiful	8
Tips	8
Calendar, Locations, & Contacts	9
CSMS Minutes	10
Groups, Classifieds & Advertisers	11
Show Applications	12 & 13

Preliminary examination of the actual Bill language suggests that it is very similar to the Bills introduced and passed by the US Senate in past years. Casual collecting would be allowed as seen appropriate by the government land managers. Provisions for civil and criminal penalties remain in the Bill as does a rewards section for information on possible violators and other property confiscation including all paleontology resources.

The bill has also been introduced in the US Senate as Bill S-320.

You can read the full text of HR 554 or S-320 at <<http://thomas.loc.gov>> using the Bill numbers. If you choose to write your representatives and senators, please also send a copy to Speaker Pelosi.

Some talking points on the Paleontological Resources Preservation Act, Senate Bill S-320 and House Bill HR 554 now being considered by the US House of Representatives Natural Resources and Agriculture Committees and the Senate Energy and Natural Resources Committee:

These Bills are, for all practical purposes, identical to the fossil bills considered by the 108th Congress in 2003-4 and the 109th Congress which passed the Senate in 2005. Therefore, past comments by previous AFMS and ALAA reviewers applies to these latest Bill introductions (S-320

(See "FOSSIL BILL IN CONGRESS" on page 4)

MARCH 2007

PICK&PACK

Volume 47

Number 3

CSMS is an incorporated non-profit organization with these goals:

- To promote and disseminate knowledge of the earth sciences, especially as they relate to mineralogy, lapidary, and fossils.
- To encourage study, collection and fashioning of minerals.
- To accomplish the same through social meetings, lectures, programs, displays, shows, and field trips.
- The Pick&Pack is published monthly to assist and promote the above.

Drew Malin President
Linda Laverty Vice President
Roger Pittman Secretary
James Bushnell Treasurer
Bill Cain Membership Director
Bill & Betty Cain Editors
John Casto Member at Large
Brent Williams Member at Large
Bob Landgraf Past President
Kaye Thompson Show Chairman
Brent Williams Field Trip Director

Proud Members of:

American Federation of Mineralogical Societies (AFMS)
www.amfed.org

Rocky Mountain Federation of Mineralogical Societies (RMFMS) www.rmfmts.org

Colorado Federation of Gem & Mineral Societies (CFMS)
www.coloradorocks.org

Colorado Springs
Mineralogical Society

Founded in 1936

CSMS
Lazard Cahn
Honorary President

**Our Staff...**

Bill & Betty Cain *Editors*
Brenda Malin *Mailer*

We encourage everyone to submit articles, photos, illustrations or observations.

Share your experiences, trials and tribulations, your new finds, or simply your experience at our last field trip.

The ability to write well is NOT a requirement. We will fix the grammar while keeping the author's voice, style, and work intact.

Handwrite it, type it, or email it. Format does not matter. All submissions are welcomed.

DEADLINE for items to be included in the next month's issue is the third (3rd) Friday of every month. To submit an item, please use the following:

Photos:

For hardcopy photos, mail to the address below or bring them to the General Assembly Meeting. All photos remain the property of the submitter and will be returned. Electronic photos should be submitted at resolutions above 200 dpi in TIF, BMP, JPG, or PIC format.

Articles:

Mail or email to the addresses below.

ALL FORMATS ARE WELCOMED.

Email: bcain2@earthlink.net or
Info@csms.us

Address:

PO Box 2
Colorado Springs, CO 80901

Phone:

(719) 634-8205

PICK&PACK is published ten (10) times per year. 250-275 mailed per month.

Unless otherwise marked, materials from this publication may be reprinted. Please give credit to the author and PICK&PACK.



Drew Malin

In case you missed it or are not on their mailing list, the February issue of North JeffCo Gem and Mineral Club newsletter, *Rockhound Ramblings*, featured the article, *GREEK FIRE*, by our own **Jack Thompson**. Our monthly newsletters are provided in electronic format to RMFMS and CFMS for posting on their web sites by our industrious Pick&Pack editors. Over the past year, we've read several articles that originated in the Pick&Pack and used in the RMFMS regional federation newsletter, our club's name is being publicized throughout the region by nominations, and other club newsletters' use our tips (with credit to the Pick&Pack). This is good advertisement for CSMS and solidifies our reputation in the rockhounding community. If you participate in rockhounding activities outside of CSMS, please take the time to write an article for the Pick&Pack—you could become another ambassador for us!

Another source of publicity for CSMS are the books given to the Pike Peak Library District in memoriam of deceased CSMS members. This past month, *The San Juan Mines: A Compendium of the Mineral Resources of Southwestern Colorado* and *Geodes: Nature's Treasures* were donated to the library in memoriam of **Mel Stankey** and **Marge Strait**, respectively, who passed away in 2006. These books are identified as gifts from CSMS in memory of our members and will be enjoyed by readers for years to come.

On another note, we want to welcome new members **Michael Nelson, Michael & Megan Pack, Jim Banuelos, Don & Norma Kusulas and children, Paul & Thelma Whitehead, Carolyn Pauly, Rob & Tammy Weiss, Phil Rudd, Ann Parker, and Ron Numancoski**. As our membership database continues to grow and be updated, we want to recognize the new rockhounds who are joining our ranks. If you see a face you don't recognize at our meetings or events, please take time to introduce yourself and welcome these new members.

Dues R Due

WOMEN'S HISTORY AT WMMI

Western Museum of Mining & Industry's Family Exploration Day, Saturday, **March 10, 1:00 pm**, celebrates National Women's History Month by featuring **Nancy Steward's** portrayal of **Julie Penrose**. Listen as Ms. Steward shares stories of the wife of **Spencer Penrose**, and how the couple used their fortune to establish art and culture in Colorado Springs through museums, hotels and more. Another attraction for this special day will be an exciting, temporary exhibit from the Colorado Women's Hall of Fame that shares the stories of the women who "created, shaped, and changed our state's and nation's history." In addition, we'll experience the lives of pioneer women by taking part in hands-on activities that include quilting, wool dying and spinning, and soap making. To top off the celebration, and to honor all Colorado Women, we'll have an Edwardian era tea!

Please RSVP at 719-488-0880. Customary admission: \$8 adults, \$7 Military/AAA, \$6 Seniors & Students, \$4 Children 12 & under, Free to Children under 3 and Museum Members. WMMI is just off I-25 at the Glenage exit, #156A—just across from the north entrance to the US Air Force Academy. The Western Museum of Mining & Industry is a private, nonprofit museum founded in 1970. We educate over 8,000 school children a year on the importance of mining in the American west. Web address is www.wmmi.org.

In the February issue of the AFMS Newsletter, John Washburn had an article on Co-Sponsorship. The idea is an excellent one, and John gives a formula that has worked. Not only are there financial benefits, but it allows the club to become more integrated into the community.



Many clubs are suffering from a decline or static membership. A major part of that reason is that clubs are not effective in advertising. Let the Co-Sponsors help. They have as much of a stake in making your show a success as your club does (they don't want to be associated with a dud).

They have resources that your club cannot hope to meet. Consider free passes that the Co-Sponsors could pass out. The objective is to get more people into your show. Cheap advertising.

Your show should take it from there.

Too often our advertising for shows is only effective for those who are already knowledgeable about the show and its contents. Rarely do we hold shows where the public stumbles in and discovers the world of Gems and Minerals. And that is our failing. We keep advertising to ourselves, which brings in no new interest.

Co-Sponsorship could be a way to help your club grow by bringing in new people. A show in a mall would help as well, but that is another story.

You can download a copy of the February Issue of the AFMS Newsletter by visiting the AFMS web site at www.amfed.org and clicking on the Newsletter tab.

CSMS FIELD TRIPS PROPOSED SCHEDULE

APRIL 21—HOLCIM CEMENT QUARRY

We're joining with Flatirons Club to enter the quarry; deadline to sign up is the end of March. MUST wear a hard hat and safety shoes. This quarry is famous for fossils, pyrite balls, and calcite. Bring picks, chisels, sledge hammers, or just pick up specimens from the ground. Need 20-25 people to make the trip.

MAY 5—PICKETWIRE CANYONLAND

This is a guided US Forest Service tour near LaJunta; no collecting allowed but plenty of photo ops. Cost is \$15/adult, \$7.50 with Forest Service passes, and \$7.50/child. CSMS reservation were made on Feb 21. Tour begins at 9:00 a.m.; must drive high-wheel base 4x4 and bring your own food, water, etc. There's still time to get in on the fun; see Roger for details on late entries.



MEMORIAL WEEKEND, MAY 26-28—HONDO CANYON, NM

In search of staurolights, Taos, NM area.

JUNE 30—MT. ANTERO

Alan & Amanda Schaak are planning a trip up Mt. Antero. A strong 4-wheel drive vehicle is required.

For more information on the proposed trips, please contact Roger Pittman, 683-2603, rpittman@netzero.com or Brent Williams at 632-3552m zaphod1863@yahoo.com.

If you know of a good trip location or would like to go to a specific location, please advise our field trip leaders so that arrangements may be made.

Upcoming Shows

March, 2nd Weekend

Deming Gem & Mineral Society Rockhound Roundup, Deming, NM.

March 16-18

Treasurer's of the Earth, ABQ Gem & Mineral Club's 38th annual show, Albuquerque, NM, www.agmc.info.

March 23-25

Fort Collins Rockhounds 46th Annual Gem & Mineral Show, Geodes and Copper Minerals, fcrockhounds@yahoo.com.

March 23-25

Ada Gem, Mineral & Fossil Club, Ada, OK. Contact Ed Vermillion, okieed42@classicnet.net.

April 20-22

Meteorites & Dazzling Treasures, 54th annual Wichita Gem and Mineral Society show. Contact Gene Maggard gandpmaggard@wildblue.net.

April 21-22

18th Annual Texas Big Bend Gem & Mineral Show, Marfa, TX. Chihuahuan Desert Gem & Mineral Club. Contact Paul Graybell (432) 729-4526 paulgraybeal@moonstones.com

May 4-6

McPherson, KS 15th Annual Gem & Mineral Club Rock Sale & Swap. Marvin Lundquist, swed-erocker@mpks.net.

May 18-19

Annual Swap, Buy-Sell-Trade. Ellinwood Park, KS 620-564-3300.

June 7-10

RMFMS/AFMS Regional Federation show at Roswell, NM.

June 16-17

Rocks for All Ages, NCRC 60th Annual Rock Show w/WY State Gem & Mineral Show, Casper WY. Bonnie Franz 307-265-3187.

June 23-24

CSMS Annual Gem & Mineral Show, "Barite - the Industrial Beauty", Phil Long Expo Center, Colorado Springs, CO. info@csms.us.

August 9-12

CONTIN-TAIL 2007. Contact: Carolyn Tunncliff, 303-833-2939 ctunncliff@comcast.net.



and HR 554). I would expect quick action on these bills, without the lack of action in the US House as in the past. You may remember this Bill was passed by the US Senate by voice vote without objection. In the last several years, several reviewers called this a “bad bill” primarily because **it criminalized fossil collecting with outrageous penalties for picking up a fossil on public land.** The Bill was also criticized for **its reward provisions for turning in violators, which seemed a recipe for abuse.** Those same statements apply to the current revision.

The current Bills under consideration have some good points and some bad points. For someone like myself, who helped write the first version of the “rockhound” fossil collecting bill and worked to defeat the so called “Baucus Bill” in 1992-3, I can clearly see some improvements. Several of the objections the amateur fossil collecting public voiced to the original 199203 Bill have been remedied in this latest S-320/HR 554 version. However, several of the remaining “rockhound” objections remain.

Some of the remaining objections to Bill S-32/HR 554 in its current form are:

1. The Bill fails to make any distinction between scientifically significant and commonly found fossils. Instead, it defines the paleontological resource it would protect to mean “any fossilized remains, trace, or imprints of organisms preserved in or on the earth’s crust” except for archaeological resources or those associated with an archaeological resource. *(The latter are covered under an archaeological resources protection act passed many years ago).* Casual collecting of a reasonable amount of common invertebrate and plant fossils may be allowed under this Bill in Section 5 at the discretion of the Secretary (the land managers). Therefore, amateurs “may” be able to collect certain common invertebrate or plant fossils found on federal lands but not necessarily. Only hand tools could be used and collecting cannot cause more than a “negligible surface disturbance” (undefined). Collecting common vertebrate fossils such as fish fossils, sharks teeth and the like would be a violation of the act, as would picking up an isolated single dinosaur bone fragment in the badlands of the western United States if it was on federal land.

All other collecting of paleontological resources on federal lands would require a permit issued by the Secretary (land managers) and be given only to “qualified” applicants. The resources collected would remain the property of the United States with the resources collected and the associated data deposited in an approved repository when collected under a permit.

2. Further, there would be no commercial collection

of fossils allowed. This would preclude anyone, amateur or otherwise, from selling, trading, or bartering any fossil collected on federal land. Not only does this effect amateurs, but completely eliminates the valuable and considerable contributions to paleontology that commercial fossil entities have provided in the past in the discovery, extraction, and preparation of fossils. The Dinosaur “Sue”, a Tyrannosaurus Rex, is a perfect example.

3. Penalties for criminal violation of any provisions of this Bill would result in fines in accordance with Title 18 of the US Code and/or imprisonment for up to 10 years. Title 18 provides for fines ranging up to \$5,000 and up to \$10,000 in certain circumstances, or up to \$250,000 in certain cases. Such cases would be tried in Federal Courts.

4. Civil penalties are also provided in the Bill and can go as high as double the replacement cost or restoration costs of the resource involved. The value is to be determined by the land managers. No due process is required under the civil penalty provisions other than a required notice of a hearing. A judicial review petition is allowed only within a thirty day period following any civil penalty assessment, but the court is allowed to rule only on the evidence presented in the hearing report. Forget “innocent until proven guilty” and the right to a trial by your peers.

5. The Reward and Forfeiture Section, Section 9, allows the Secretary of the Interior or Secretary of Agriculture to pay a reward for information leading to a civil (or criminal) penalty. Rewards can go as high as \$500. So, you might want to look out for any neighbors who don’t like you if you have any vertebrate fossils in your collection, especially, if you cannot prove where they came from. Most fossils I know of don’t say “Made in China” or “Hocho en Mexico” on them. And, how many of you kept receipts on items purchased or can you vouch for exactly where the vertebrate fossils really came from even if you did purchase them and can you prove it? The Bill calls for a person to exercise “due care” in knowing if the resource was excavated or removed from federal land. Again, “due care” is undefined.

6. Also subject to forfeiture under this Bill are “paleontological resources” with respect to which violation occurred and which are in possession of any person and all vehicles and equipment of any person that were used in connection with the violation”. I’m not a lawyer, but I do have knowledge of what has happened to several collectors and to several hobbyists in the past with regard to property confiscated, rightly or wrongly. In most cases, nothing was ever returned regardless of its being legally obtained by the collector.

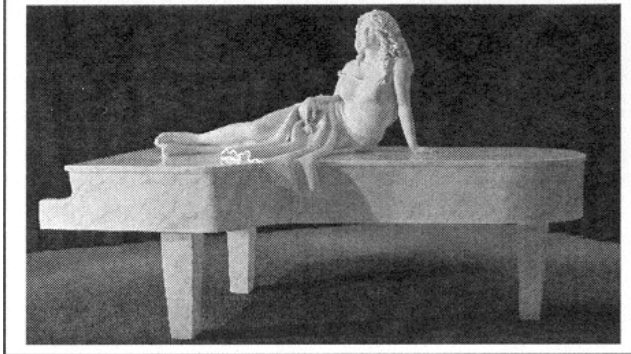
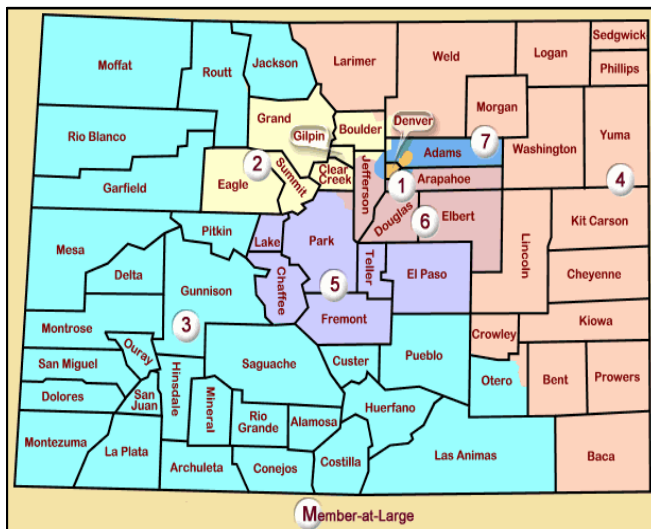
(Continued on next page)

So, I worry for fossil collectors if this Bill, S-230/HR 554 becomes law. The best way to prevent its passage in its present form is for each and everyone of us to communicate your feelings to your congressional representatives. Because it seems likely that these bills will be passed in short order, you need to write that letter immediately. *It doesn't matter what district; write to all of them!*

Colorado U.S. House of Representatives and Senator addresses:

- Sen. Wayne Allard (D)—www.allard.senate.gov/public/index.cfm?FuseAction=Contact.Home
- Sen. Ken Salazar (D)—www.salazar.senate.gov/contact/email.cfm
- Rep. Diana DeGette—1st District, www.house.gov/degette/
- Rep. Mark Udall (D)—2nd District, www.house.gov/markudall/
- Rep. John Salazar (D)—3rd District, www.house.gov/salazar/
- Rep. Marilyn Musgrave (R)—4th District, www.house.gov/musgrave/
- Rep. Doug Lamborn (R)—5th District, www.douglamborn.com
- Rep. Tom Tancredo (R)—6th District, www.house.gov/tancredo/
- Rep. Ed Perlmutter (D)—7th District, www.perlmutter2006.com

Editor's UPDATE: Speaker Pelosi sent HB 554 to the House Subcommittee on National Parks, Forest & Public Lands on February 2, 2007. After a little internet investigation, I discovered the members of that subcommittee. Of special note is the Chairman, Rep. Raul M. Grijalva's (AZ) comment, "I am committed to ensuring that our public lands retain their natural glory and are protected for future generations to appreciate and enjoy." (See HB 554 on page 6)



"American Woman" by Colorado artist Francisco. Francisco's new marble sculpture will be on display at the Pikes Peak Gem & Mineral Show 2007. This life size awe-inspiring masterpiece was sculpted from a 21-ton block of marble quarried from the Colorado Yule Mine in Marble, Colorado.

43rd Annual Pikes Peak Gem & Mineral Show

Featured mineral – Barite

When: June 23rd & 24th, 2007

Sat. 10AM-6PM

Sun. 10AM-4PM

Location: Phil Long Expo Center
1515 Auto Mall Loop
Colorado Springs, CO 80920

For more information:

Website: www.csms.us

Email: info@csms.us

Phone: (719) 683-2603

Show proof of membership (membership card or newsletter with your name on it) in a mineral club and get a dollar off admission for show.

Don't miss our silent auction.

Free admission to Boy Scouts, Girl Scouts, and Scout Leaders in Uniform.

* * * Thanks to our sponsors * * *

The Cripple Creek and Victory Gold Mining Co.,
The Gazette, and The SilverWood Hotel & Conference Center.

HB 554—continued from page 5

Colorado congressmen on the subcommittee include **Mark Udall, Tom Tancredo, and Doug Lamborn.**

WRITE TO THEM FIRST & FAST!

- Rep. Mark Udall—D, CO: 8601 Turnpike Dr. #206, Westminster, CO 81031, (303) 650-7820, (303) 650-7827 fax; 100 Cannon HOB, Washington DC 20515 (202) 225-2161, (202) 226-7840 fax, www.house.gov/markudall/
- Rep. Tom Tancredo—R, CO: 240 Wilcox St., Castle Rock, CO 80104, (303) 688-3430; 1130 Longworth HOB, Washington DC 20515, (202) 255-7822, www.house.gov/tancredo/
- Rep. Doug Lamborn—R, CO: 3730 Sinton Rd, Suite 150, Colorado Springs, CO 80907, (719) 520-0055, (719) 520-0840 fax; 437 Cannon HOB, Washington DC 20515, (202) 225-4422, (202) 226-2638 fax, www.douglamborn.com

It's important that our elected officials know how we stand on this important issue. Future generations of rockhounds will be able to "see" but not "enjoy" our hobby if this bill passes as it's currently written. So, no matter which district you live in, all of Colorado would be effected, and every representative should hear from us right away. Addresses for the other four House members may be obtained from the web sites listed after their names on page 5 and following the link at the bottom of the page to their personal site.

The future collection of specimens is in your hands!

MINI MINERS MONTHLY



Do you have a pebble pup who finds the available hobby publications a bit hard to digest or boring for a young mind? Well, there's a brand new monthly publication just for young mineral collectors that's choked full of understandable articles on minerals, interesting facts, email questions from kids from all over the country, and lots of learning activities including a coloring page, puzzles, cut and fold crystal models, and more.

The *Mini Miners Monthly* is available from Diamond Dan Publications, PO Box 143, Manchester, NY 14504. The annual subscription is \$19.95 for 12 issues plus monthly bonus material provided via email. More information may be found at www.diamonddanpublications.com, (585) 289-4936, or email to diamonddan@rochester.rr.com. Check it out; I think you'll find it very informative even for us older, novice rockhounds!

Logos used by permission of Darryl Powell, Diamond Dan Publications, diamonddan@rochester.rr.com

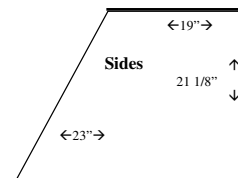
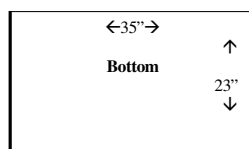
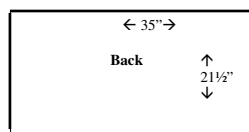
CSMS DISPLAY CASES

If you have not already started now is the time to begin your display for the 43rd Annual Pikes Peak Gem & Mineral Show at the Phil Long Expo Center.

Competitive and non-competitive displays will be accepted with an entry deadline of May 15. Application for displays are on pages 12 and 13 of this issue.

Roger Pittman provided the following information on cases for those of us who are new at this:

All measurements are inside measurements. However, since all cases are handmade there may be some slight variations in the cases. Be sure to bring any necessary tools required to make adjustments to your liners.



Dues R Due



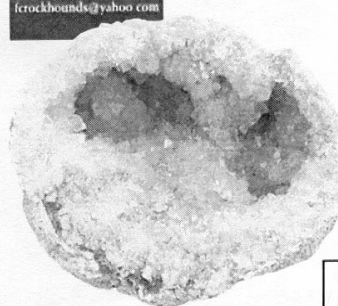
For further information contact:

H. Collins
Rockhounds, Inc.
P.O. Box 482,
Ft. Collins, CO 80523
Dealer information:
970-221-0338
Show Chairman:
970-493-6168
Show Business e-mail:
rockhounds@yahoo.com

March 23, 24, & 25, 2007

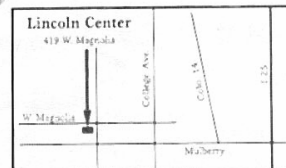
March 23: 4-8 p.m.; March 24: 9 a.m. - 6 p.m.;
March 25: 10 a.m. - 5 p.m.

- Exhibits • Door Prizes
- Demonstrations • Grab Bags
- Gem & Mineral Dealers



Featuring **geodes**
& **copper minerals**

Admission:
Adults (over 18): \$3 daily,
\$5 for 3-day pass
Students age 12-18 \$1 with I.D.
Children under 12 FREE
when accompanied by adult



From fine jewelry to fossils: nature's treasures on display!

RMFMS PRESIDENT'S MESSAGE

BY RICHARD JAEGER

I returned to Tulsa on January 30 from spending a week in Las Vegas for the Miss America Pageant where our contestant from Oklahoma won the title for the second straight year, an exciting time for our Oklahoma delegation. I had never been to Las Vegas before and made the most of my trip by visiting Death Valley twice, Hoover Dam, the Mojave Desert, and a couple of old gold mining ghost towns. I also collected sand from several places for my wife, Linda, who is a member of the International Sand Collecting Society. Don't really know exactly what I was expecting but was overwhelmed by Death Valley National Park and also the Mojave Desert Preserve. Anyone with an interest in geology should put those places on their list to visit.

Visiting places of interest to rockhounds brings me to my next point. I mentioned back in the August 2006 Newsletter that while the RMFMS Show is scheduled for Roswell, NM in 2007 and for Tulsa, OK in 2008, we have no bids beyond that. I would hope we receive bids to host the 2009 and 2010 shows at our meetings in Roswell this June. One of the most enjoyable aspects of these RMFMS Shows is being able to travel to different parts of our Federation and see the geology and the local or regional collecting materials. I know some clubs are concerned about the 50/50 financial split that is to be made with RMFMS when hosting a federation show. And, while we might prefer that, we can work with you to allow you to keep more of your profits if your club's finances are such that it would be otherwise be prohibitive to host a show. Please consider hosting a show, and call me at 918-481-0249 or email me at rjgrsci@aol.com with any questions. In that August 2006 issue, I outlined some of the things involved with hosting a convention and would be more than happy to go over that with you.

Finally, as winter comes to an end in parts of our Federation, it is time for rockhounding activities to begin again. (We have snow on the ground as I am writing this message, but that will pass.) In my area, we have the Ada Rock Show in mid-March and then the Judges & Exhibitors Seminar in Norman. I am sure you are or soon will be having activities, too. It is always good to visit with people from other clubs and learn more about our hobby.

Best wishes, and I am looking forward to seeing many of you at Roswell and at other functions before then.

EXHIBITORS AND JUDGES SEMINAR

BY SANDY RIEKEMAN
QUARRY QUIPS, 2/07

The Oklahoma State Council sponsored Exhibitors and Judges Seminar will be March 31 from 9:00 until 4:00 at the Energy Building on the University of Oklahoma Campus in Norman, OK. The Energy Building is at 100 W. Boyd.

We will have sessions dealing with AFMS Competitive Rules and a session on displaying. Whether you want to enter Competitive or not, this information is valuable in learning to display your material to the best advantage. The seminar is open to all RMFMS members. All of the seminars have been so full of excellent information that if you do not attend, you will be missing something that could have possible gotten you a trophy at Roswell. These are excellent interactive seminars. It doesn't cost to attend, and what you learn will help you to show off your "rock and mineral goodies". We would like to have a nice crowd. Mark your calendars!



First Place ribbon, after attending the Judges & Exhibitors Seminar!

A TREASURER'S DREAM

AUTHOR UNKNOWN

I fell asleep the other night
And while I had my snooze,
I dreamed each member stepped right up
And promptly paid his dues.
But when I found 'twas but a dream
I nearly threw a fit!
It's up to you to make it true;
Suggestion—Please remit!

REMINDER—To continue all the fun and educational activities with CSMS, please submit your 2007 dues. The discount deadline ended January 31st: \$20 individuals, \$30 family, and \$2 Juniors.

Dues R Due

BIRTHSTONE—AQUAMARINE

[HTTP://WWW.MINERAL.GALLERIES.COM](http://www.mineral.galleries.com)

Aquamarine is the blue, or perhaps more correctly, blue-green or aqua variety of the mineral beryl.

Aquamarine is colored by trace amounts of iron that find their way into the crystal structure. Most gem aquamarines have been heat treated to produce the popular blue-green colors from less desirable yellow or pale stones. The leading producer of aquamarines is the country of Brazil, which has many mines. Pakistan, as well as many U.S. locations (including Diane's Pocket at Mount Antero), produce wonderful specimens as well. Recently, a new mine in China has produced large numbers of excellent flat (stubby) hexagonal crystals, for a fraction of the price of those beautiful Pakistan specimens.

Aquamarine is sometimes found in huge crystals (unlike emerald). It is also known in a glassy form, often without showing crystal form, and sometimes with many holes or other odd shapes. Other times a large cluster of prismatic crystals can be seen to all have the same alignment—a sign that it is really a single crystal with many faces.

MATCHLESS MINE DONATED TO MUSEUM

FROM FRIENDS OF MINERALOGY-COLORADO CHAPTER NEWSLETTER, 1/07

As reported in a recent *Rocks and Minerals*, The National Mining Hall of Fame and Museum in Leadville has acquired the famous Matchless Mine through a donation. The mine is located not far from the museum and is adjacent to the Robert E. Lee Mine, which the museum also owns. The mine has been operated as a museum and tourist attraction since 1953. Under the Museum's ownership, the Matchless was open on a more regular daily basis this past summer, and its facilities were expanded to make it more attractive to visitors. It is exciting that Horace Tabor's fabulously rich Matchless Mine will be preserved for future generations!

"AMERICA THE BEAUTIFUL"

BY JOHN SPUNAUGLE, AFMS, 2/07

Legislation passed in the waning days of the 2005 Congressional session established a new program of passes for the National Parks Service. Here's the information on the new program that went into effect on January 1 of this year.

Dubbed "*America the Beautiful*", these passes will be needed to use certain facilities and access certain areas of public land. (If you're a casual user, say you only visit one or two parks once or twice per year, you will still be able to pay for park use on an individual basis.) The new program replaces the *Golden Eagle*, *Golden Age*, and the *Golden Access Passports* as well as the *National Parks Pass*. Existing passes will remain valid until expired, lost, or stolen. This means the lifetime passes will be valid unless lost or stolen at which time they will need to be replaced.



Cost of the four different passes in the new interagency program are:

1. A new annual interagency pass costing \$80—for visitors to multiple federal sites, the pass offers unlimited coverage of entrance and standard amenity recreation fees for a specific period of time, typically one year, beginning from the date of sale;
2. A \$10 lifetime senior pass of US citizens 62 or over;
3. A free lifetime access pass for citizens with permanent disabilities; and
4. A new, free annual volunteer pass for volunteers acquiring 500 hours of service on a cumulative basis.

Information on the new passes can be found on the internet at:

www.doi.gov/news/06_News_Releases/061205.html.

TIPS— **Aluminum Scribe** tip by Dug Duggel: An aluminum scribe is often used with a template to outline stones. This same scribe can give you an idea as to the hardness of a particular stone. If you can see the mark but have to look carefully, the stone is about 7 Mohs. If the mark is very bold, the stone is about 5 Mohs. If the mark cannot be seen, the stone is more than 7 Mohs. *From the T-Town Rockhound, Feb '07.* **Denim Patches:** Did you know that denim iron-on patches make excellent polishing disks? They will adhere to surfaces when ordinary glues will not. Obtain the largest ones you can fit to your wheel disks and cut to fit. *From the Ozark Earth Science News, 2/07, via Rock Writing, 5/06.* **Dopping Mini-Cabs:** Sometimes a finishing nail needs to be used for dopping smaller stones, but there isn't much bonding area, plus the nails are hard to hold onto as you work. One solution is to drive the finishing nail into the end of a wooden dowel (1/4" diameter), which gives good control. Using either red or black faceter's dop wax will also provide a little stronger bond than regular green dop wax. Wooden shish-kabob skewers purchased at the local grocery store also work well. Cut the skewers to a comfortable length and apply enough dop wax to hold the stone. For heat-sensitive stones such as opal, paint the opal with nail polish and only warm the stone. The nail polish creates a good bond to the dop wax. *From the Ozark Earth Science News, 2/07, via Chips 'n Splinters, 3/03.*

Sunday	Monday	Tuesday	Wednesday	Thursday	Friday	Saturday
MARCH 2007 — CSMS CALENDAR						
				1 7p Board Mtg	2	3 12n Lapidary Mtg
4	5	6	7	8	9 7:30p Crystal Study Grp Mtg	10 Earth Science Fair, 10-2p, Phil Long Expo
11 Daylight Savings Begins	12	13 7p Micromount Group Mtg	14	15 6:30p Show Comm. Mtg 7:30p General Assembly Mtg	16	17 St. Patrick's Day
18	19	20	21	22	23	24
25	26 7p Faceting Group Mtg	27 7:30p Camera Club Mtg	28 7p Fossil Group Mtg			

"When you come to the end of your rope, tie a knot and hang on!"- Franklin D. Roosevelt

Locations

Board Meeting: 1st Thursday @ 7:00p. SilverWood Hotel
Drew Malin: 531-7594

Camera Club: 4th Tuesday @ 7:30p 1514 Hancock, COS
Roger Pittman: 683-2603

Crystal Study Group: 2nd Friday @ 7:30p, 1514 North Hancock, COS;
Kerry Burroughs: 634-4576

Jewelry Group: Meets on informal basis; if interested, contact Rick Copeland: 594-6293 or Bill Arnsen: 749-2328

Faceting Group: 4th Monday @ 7:00p, Various Locations
David Wilson: 635-7891
dlwilson@pcisys.net

Fossil Study Group: 4th Wednesday @ 7:30p.
John Harrington: 599-0989

Lapidary Group: 1st Saturday @ Noon 3085 Rhapsody Drive, COS.
Drew Malin: 531-7594

Micromounts Group: 2nd Tuesday @ 7:00p, 1514 North Hancock, COS
Phil McCollum: acc@friei.com
Moyra Lyne: 442-2673

REFRESHMENTS FOR GENERAL ASSEMBLY MEETINGS

March=Camera	June=Fossil	September=Micromounts
April=Crystal & Jewelry	July=Lapidary	October=Board
May=Faceting	August=No Meeting	November=Camera
		December= Everyone

PRESIDENT	Drew Malin	531-7594	advanceone@comcast.net
VICE PRESIDENT	Linda Lavery	520-5939	chilipepper24@juno.com
SECRETARY	Roger Pittman	683-2603	prpittman@netzero.com
TREASURER	James Bushnell	598-9262	bushy@pyramidpeak.com
MEMBERSHIP DIRECTOR	Bill Cain	634-8205	bcain2@earthlink.net
MANAGING EDITORS	Bill & Betty Cain	634-8205	bcain2@earthlink.net
MEMBER-AT-LARGE	John Casto	329-0912	Jcasto@fvs.edu
MEMBER-AT-LARGE	Brent Williams	632-3552	zaphod1863@yahoo.com
PAST PRESIDENT	Robert Landgraf	687-3195	RMLWP74@aol.com
SHOW CHAIRPERSON	Kaye Thompson	636-2978	
FIELD TRIP DIRECTOR	Brent Williams	632-3552	zaphod1863@yahoo.com
LIBRARIAN	Sarah Udell	237-7985	sarahudell@hotmail.com
CAMERA CLUB	Roger Pittman	683-2603	prpittman@netzero.com
CRYSTAL STUDY	Kerry Burroughs	634-4576	kburroughs@adelphia.net
FACETING GROUP	Dave Wilson	635-7891	dlwinlson@pcisys.net
FOSSIL GROUP	John Harrington	599-0989	harrington1@mindspring.com
JEWELRY GROUP	Rick Copeland	332-7915	rick.copeland@covad.net
LAPIDARY GROUP	Drew Malin	531-7594	advanceone@adelphia.net
MICROMOUNT GROUP	Phil McCollum		acc@friei.com
PEBBLE PUBS	Vacant		Dues R Due

COLORADO SPRINGS MINERALOGICAL SOCIETY

Minutes, General Assembly & Annual Banquet

February 15, 2007

President, Drew Malin, called the published in the Pick&Pack.

Treasurer's Report

Jim Bushnell reported on the Club's finances.

Guests:

Guests were recognized; one visitor joined CSMS at the meeting.

Satellite Groups:

- Camera Club: Roger Pittman reported when and where Camera Club meets; February competition subject is "bridges".
- Crystal Group: Kerry Burroughs reported on the Crystal Study Group meeting.
- Faceting: Dave Wilson reported on the faceting group.
- Fossils: No report.
- Micromounters: Moyra Lyne whispered Micromounter's group info.
- Lapidary: Drew Malin reported on the lapidary group.
- Jewelry: No report; contact Rick Copeland.
- Field Trips: Roger Pittman announced trips to Holcim Quarry in Penrose, CO 4/21/07; Picketwire Canyon 5/5/07, and possible Taos, NM trip for staurolites in late May. One person suggested that May 19 & 20 would not conflict with Memorial Day activities. Asked for suggestions for additional trips—none received.

Show Report:

- 2006 Chairwoman, Lorrie Hutchinson, presented remaining trophies to Mike Wheat "Best of Show Pyrite", Bob Landgraf "Best of Show Pyrite", and Ray & Eloise Berry were given the "Founders Trophy" from 2005 which had not been presented then.
- 2007 Show—Kaye Thompson gave a report for our 43rd Annual Gem & Mineral Show. We're looking for corporate sponsors! This would enable us to get in displays that charge a fee to bring their displays.
- 2007 Tucson Show highlights—Jack & Kaye Thompson won "Best of Show Minerals Master 1st" place, "Best of Show Masters Class" at the Tucson Show, and Jack gave a short report about putting displays in a show, starting with our local show.

Old Business

- Awards/certificates not presented at the installation banquet were presented to members present. The remaining certificates will be mailed.

New Business

- Mel Stankey, Past President from 1985-86, passed away recently; we held a moment of silence in remembrance and will donate a book to the library in his name.

Program

- White Buffalo gift exchange held over from the cancelled December meeting.

The meeting closed at 9:10 pm.

Respectively submitted,
Roger Pittman, Secretary

Roses are red, violets are blue;
Gotta remind you, DUES ARE DUE!

Regular meetings of various groups

Café Scientifique features a talk and discussion on some current science topic; 6-30-8:00 p.m. Tuesday evening once a month (approximately the 3rd Tuesday) at the Wynkoop Brewery (Mercantile Room), corner of 18th & Wynkoop Streets, Denver. No charge; all are welcome.
<http://cafescicolorado.org>

Colorado Scientific Society, monthly meetings with one or two speakers on an earth science topic, 3rd Thursday, 7:00 p.m. American Mountaineering Center, 710 10th St. (NE corner with Washington), Golden, CO.
<http://www.coloscisoc.org>

Denver Mining Club, Informal weekly luncheon meetings with a speaker, every Monday, 11:30-1:00, Country Buffet, 8100 W. Crestline Ave, #A3, Littleton, CO (about 1/2 mile north and east of the intersection of Wadsworth Blvd. & Bowles), tel: 303-933-9923. No charge, but all who attend must purchase a lunch at the restaurant. See web site http://china-resources.net/den_min.html

Denver Region Exploration Geologists' Society (DREGS) meets monthly on the 2nd Monday, 7:00 p.m. Consolidated Mutual Water Company (lower level), 12700 W. 27th Ave., Lakewood, CO; no charge, all are welcome to the meetings.
See <http://www.dregs.org/>

Rocky Mountain Assoc. of Geologists (RMAG) has monthly luncheon meetings with a speaker at the Marriott City Center, California St. between 17th & 18th Streets, 11:30 a.m. Luncheon cost is \$24; no reservations are needed for the talk only.
See <http://www.rmag.org/>

USGS Colloquium Series, lectures on Thursday, 1:30-2:30 p.m. Foord Lecture Room, Bldg. 20, Denver Federal Center, Lakewood, CO. USGS staff, visitors, and guests are welcome. See <http://geology.cr.usgs.gov/crg/colloquia.htm>

Western Interior Paleontology Society (WIPS), meets 7:00 p.m. first Monday of the month, Sep-May, Ricketson Auditorium, Denver Museum of Nature and Science, <http://www.wipsppc.com>

CLASSIFIEDS . . .

NOTICE—Items listed for sale in the Pick&Pack are displayed only as an informational service to our members and advertisers. CSMS and/or the Pick&Pack do not promote nor warranty any item displayed. The sellers and buyers are responsible for the condition and ownership of any item shown.



24" Saw
Closed Cabinet with Auto Feed, on casters, good shape, no leaks—\$2000 (price reduced)



Mettler H33AR Electronic Scale
160 gal max; accurate to .0001 gal.
\$170 Dick's Rock Shop

forackleys@aol.com

(719) 633-1153

Ackley's
Rocks & Stamps

RHONDA JO HART
ART & HELENA ACKLEY
OWNERS

3230 NORTH STONE AVE.
COLORADO SPRINGS, CO 80907

FOR SALE

Collection of Minerals, Micromount Equipment, and Books

By appointment only
Dorothy Atlee
(719) 573-0757

Ackley's on the Web:
<http://www.merchantcircle.com/business/Ackleys.Rocks.and.Stamps.2.719-633-1153> or Google "Merchant Circle" and type in the phone # 719-633-1153.

DICK'S ROCK SHOP

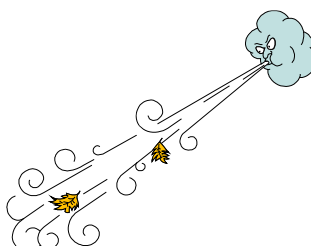
- Natural Stone Beads
- Natural Stone Eggs
- Exotic Wood Pen Sets
- Mineral and Fossil Specimens
- Precious and Semiprecious Gemstones
- Gold and Silver Jewelry
- Natural Stone and Wood Bookends

Cabinets/Shelves
Lapidary Equipment
Silversmithing Equipment

Diana Wing - Owner
719-390-7788
www.DicksRockShop.com
dwing@dictsrockshop.com

7310 S. Highway 85/87 • Fountain, Colorado 80817

Dues R Due



KRYSTALS

Gems Minerals Jewelry
Crystal Skulls
by Appt. Only
719-531-7203

Joe & Marylee Swanson Colorado Springs, CO
Krystals@webtv.net

The Colorado Springs Mineralogical Society
June 23 & 24 2007
Phil Long Expo Center, Colorado Springs, Colorado

REQUEST FOR NON-COMPETITIVE DISPLAY SPACE

Name:	Society:	
Address:	Phone:	
City:	State:	Zip:

Exhibitors are urged to bring their own cases. A limited number of club cases are available upon request. Exhibitors using club cases will need to furnish any risers, linings, extension cords or accessories as needed. **EACH CASE WILL BE LIMITED TO 150 WATTS.**

NON-COMPETITIVE EXHIBIT

Describe Display:

	I will bring my own case	Case Length	
	I will need a case*	Approximate Case Length*	

*CSMS cases are 36" X 24" outside measurements

Set up is Friday 4PM until 9PM; Judge / Exhibitor conferences 1:30 P.M. Saturday

Signature of Non-Competitive Exhibitor: _____

With the signing of this request, it is mutually agreed that the Colorado Springs Mineralogical Society, the Rocky Mountain Federation, and Phil Long Expo Center shall not be liable to any exhibitor for damage, loss or destruction of any exhibit or injury to his person for any cause and all claims for injury are expressly waived by the exhibitor.

DEADLINE: May 15, 2007
Applications will be
accepted after 5/15
on a space-available
basis.

RETURN TO: Kaye Thompson, CSMS Show Chairman
1830 Mesita Ct.
Colorado Springs, CO 80906

PLEASE USE ONE FORM FOR EACH ENTRY - FORM MAY BE REPRODUCED

The Colorado Springs Mineralogical Society
June 23 & 24 2007
Phil Long Expo Center, Colorado Springs, Colorado

REQUEST FOR COMPETITIVE DISPLAY SPACE

Name:	Society:	
Address:	Phone:	
City:	State:	Zip:

Exhibitors are urged to bring their own cases. A limited number of club cases are available upon request. Exhibitors using club cases will need to furnish any risers, linings, extension cords or accessories as needed. **EACH CASE WILL BE LIMITED TO 150 WATTS.**

COMPETITIVE EXHIBIT

Describe Display:

	I will bring my own case	Case Length			
	I will need a case*	Approximate Case Length*			
DIVISION	CLASS	MASTER	ADVANCED	JUNIOR	SOCIETY

*CSMS cases are 36" X 24" outside measurements

I hereby certify that this exhibitor is a member in good standing of the RMFMS.

Signature of Society Officer: _____

SIGNATURE & TITLE OF AN OFFICER OF YOUR RMFMS MEMBER HOME CLUB

Set up is Friday 4PM until 9PM; Judging will begin at 9AM Saturday, 6/23

Judge / Exhibitor conferences 1:30 P.M. Saturday

Signature of Competitive Exhibitor: _____

With the signing of this request, it is mutually agreed that the Colorado Springs Mineralogical Society, the Rocky Mountain Federation, and Phil Long Expo Center shall not be liable to any exhibitor for damage, loss or destruction of any exhibit or injury to his person for any cause and all claims for injury are expressly waived by the exhibitor.

DEADLINE: May 15, 2007

RETURN TO:

Kaye Thompson, CSMS Show Chairman
1830 Mesita Ct.
Colorado Springs, CO 80906

PLEASE USE ONE FORM FOR EACH ENTRY - FORM MAY BE REPRODUCED

BILL & BETTY CAIN, EDI-



PICK&PACK

P.O. Box 2

COLORADO SPRINGS, CO 80901-0002

Non-Profit Org.
U.S. Postage
PAID
Colo. Sprgs., CO
Permit No. 66

Joining the Colorado Springs Mineralogical Society (CSMS)

General Assembly meetings are the third (3rd) Thursday of each month, except August, beginning at 7:30 p.m. at the Colorado Springs Senior Center, 1514 North Hancock Blvd., Colorado Springs, CO.

Visitor are always welcome.

CSMS also offers Satellite Group meetings that allow more focused attention in specific areas of our members' interests. Our current Satellite Groups consist of the following: Camera Club, Crystal Study Group, Faceting Group, Fossil Study Group, Jewelry Group, Lapidary Group, Micromounts Group, and Pebble Pups. For details of Satellite Group meetings, see page 11.

Yearly dues include 10 issues of the **PICK&PACK**, all field trips (additional fees may be required on some field trips, and members are responsible for all transportation to and from), participation in all Satellite Groups (some groups may request additional fees to help cover resource costs), free admission to the *Western Museum of Mining & Industry*, a year of learning and enjoyment, plus a lifetime of memories.

Individuals—\$20

Family—\$30

Juniors—\$2

If you are interested in joining CSMS or would like more information, we encourage you to attend our next General Assembly meeting or visit our web site: www.csms.us.