

# PICK & PACK

THE BULLETIN OF THE COLORADO SPRINGS MINERALOGICAL SOCIETY Published Since 1960

JUNE 2006 PICK & PACK  
Volume 46 Number 3

## Deming Rockhound Roundup

By Bob Landgraf

Every year during the second week in March, the Deming Gem and Mineral Society sponsors the "Rockhound Roundup" Gem and Mineral Show and field trips. I had always heard about the show and how much fun that people had on the field trips. This year I had not been able to make the Tucson Show, so I decided to go to Deming and check it out.

I was amazed at the number of people who were attracted to the show. They came from all around the country. The states included North Dakota, California, Oklahoma, Missouri, and on and on. Some of our own members who RV during the winter months, including **Bob and Barbara Bernard**, appeared at the show before their return to Colorado in the spring. A few former members, **Scott and Tonya Freeman**, who had disappeared from our club, had relocated to Arizona and showed up on one of the Deming field trips. **Marge Regal**, from our club, joined us on the second day of field trips. Certainly the big draw was the three days of field trips during the four-day show. Early each morning, more than fifty cars were lined up to go on one of the three field trips offered each morning.

The first day we went on the trip to the Baker Egg Claim. We got to dig through the mine tailings and found geodes that the claim owners had missed. I have a couple of pieced showing some beautiful blue opal but have not yet cut anything. Both areas on the first two days were very close to the border with Mexico. On the way to the mine, we passed the Air Force Aerostat base. The



Bob Landgraf at the Deming Gem and Mineral Society's Baker Egg Claim, March 2006.  
Photo by Barbara Schmitt

Aerostat is a tethered surveillance balloon used to spot illegals and drug smugglers. We observed the apprehension of two illegals by the border patrol as we were passing through to the Baker Claim.

The second day we went to the club agate claim, "Big Diggins". They had dug a few trenches with a backhoe to open up new material. I have a small pile of material to cut. Again, I have some showing a blue opal vein.

The third day we went to an old quarry above the Rio Grande, north of Las Cruces and very close to Radium Springs. We found some truly beautiful travertine at the quarry site. All and all, we came back with a full vehicle and had fun. The weather was not very cooperative, however. The jet stream had dipped down along the southern New Mexico and Arizona borders. This meant wind and, in dry country, dust storms. The various mountain ranges would quietly disappear from view.



Bob Landgraf's travertine find at the quarry near Radium Springs, NM.  
Photo by Barbara Schmitt

CSMS is an incorporated non-profit organization with these goals:

- To promote and disseminate knowledge of the earth sciences, especially as they relate to mineralogy, lapidary, and fossils.
- To encourage study, collection and fashioning of minerals.
- To accomplish the same through social meetings, lectures, programs, displays, shows, and field trips.
- The Pick & Pack is published monthly to assist and promote the above.

Drew Malin ..... President  
Linda Laverty ..... Vice President  
Rick Copeland ..... Secretary  
James Bushnell ..... Treasurer  
Vacant ..... Membership  
Bill Cain ..... Editor  
John Casto ..... Member at Large  
Brent Williams ..... Member at Large  
Bob Landgraf ..... Past President  
Lorrie Hutchinson ..... Show Chairman  
Brent Williams ..... Field Trip Director

### Proud Members of:

American Federation of Mineralogical Societies (AFMS)

Rocky Mt. Federation of Mineralogical Societies (RMFMS)

Colorado Federation of Mineralogical Societies (CFMS)

Colorado Springs  
Mineralogical Society  
Founded in 1936



Lazard Cahn  
Honorary President



### Our Staff...

**Bill Cain** Editor  
**Brenda Malin** Mailer

We encourage everyone to submit articles, photos, illustrations or observations.

Share your experiences, trials and tribulations, your new finds, or simply your experience at our last field trip.

The ability to write well is NOT a requirement. We will fix the grammar while keeping the author's voice, style, and work intact.

Handwrite it, type it, or email it. Format does not matter. All submissions are welcomed.

DEADLINE for items to be included in the next month's issue is the third (3rd) Friday of every month. To submit an item, please use the following:

Photos:

For hardcopy photos, mail to the address below or bring them to the General Assembly Meeting. All photos remain the property of the submitter and will be returned. Electronic photos should be submitted at resolutions above 200 dpi in TIF, BMP, JPG, or PIC format.

Articles: Mail or email to the addresses below.

ALL FORMATS ARE WELCOMED.

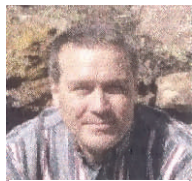
Email: bcain2@earthlink.net or  
 Info@csms.us

Address:  
 PO Box 2  
 Colorado Springs, CO 80901  
 Phone:  
 (719) 634-8205

PICK & PACK is published ten (10) times per year. 200-250 mailed per month.

Unless otherwise marked, materials from this publication may be reprinted. Please give credit to the author and PICK & PACK.

## PRESIDENT'S CORNER



Drew Malin

It's that time of year again. This will be the last Pick & Pack issue before our annual show. There's a lot to do as everyone knows, but the most important task now is to **get the word out!** Word of mouth is a great way to advertise the show. Tell everyone at work, at school, and everywhere else you go!

The monthly meeting will be held on the **second** Thursday in June, that's June 8th at 7:30pm as usual. We will be using the meeting to fine tune the volunteers signup as well as other details of the show. We will have the new postcards available for members to pass out. The last week before the show should be the best time to distribute these.

This year's media advertising will include The Gazette, direct mail, and KKCS Radio. KKCS will be running our ads and giving away tickets for the week leading up to the show and will be doing a live remote broadcast from the show on Saturday.

Now that summer is here and everyone has had a chance to look at their schedules, I'd like to again encourage more people to sponsor field trips. If you have an idea for a field trip, contact Brent Williams at [zaphod1863@yahoo.com](mailto:zaphod1863@yahoo.com) or me at [advanceone@adelphia.net](mailto:advanceone@adelphia.net). I hope everyone is working on their display cases for the show; the more we have, the better. Once again, I want to encourage everyone to get out there and promote our show; and once again, thanks to all the members who have put in so many hours to make this show a success.

### From the Editor(s) . . .

By Betty Cain

Wow, what a trip!! The April Pick & Pack was a mad dash to the finish line, but it happened with a lot of help from our faithful members. THANK YOU. We feel we've licked the software problem, have learned a great deal, and apologize for any typos or missing articles.

When Bill volunteered, I know he didn't have a clue as to how much time and effort was involved for a novice rockhounder and "Columbus typist" (and I knew I'd just been drafted as his co-editor and composer). It is a lot of hard work but also a lot of fun. We're both learning a lot about rockhounding, publishing, and our fellow members. He always says, "when you get Bill, you get Betty as a bonus; we're a set". I know you rockhounding wives know what I'm talking about; right?

We look forward to learning and participating more. Please send us your trip news, articles, or any announcements you want in the Pick & Pack.

Until next month, 'keep rockin',  
 Bill & Betty



From The Rockhound Record, Feb. 2006

There's a clever young fellow named **SOMEBODY ELSE**. There's nothing this fellow can't do! He's busy from morning 'til night. Just substituting for you. You're asked to do this, or asked to do that, and what is your ready reply? "Get **SOMEBODY ELSE**, Mr. Chairman, he'll do it much better than I." There's so much to do in our club. So much, and the workers are few, and **SOMEBODY ELSE** is getting weary and worn, just substituting for you. So, next time you're asked to do something worthwhile, just give them an honest reply, "If **SOMEBODY ELSE** can give time and support, **YOU CAN BET YOUR LAST DIME, SO CAN I.**"

# AFMS President Speaks Out

Reprinted from AFMS Newsletter, May 2006

By Jim Robinson, AFMS President

This month's message concerns the way our annual meeting is being scheduled. I've no doubt there will be some who disagree, but I feel we are making it difficult for our younger members with families to attend.

Currently we are scheduling the Uniform Rules meeting on Tuesday, the AFMS meeting on Wednesday the middle of the week, and the Awards Banquet on Saturday evening. The show itself is scheduled for Friday, Saturday, and Sunday with Thursday left for field trips. In my view, this schedule does not justify a full week away from home just to attend two meetings in the middle of the week.

With the ever-increasing cost of transportation and lodging, it makes it difficult, if not impossible, for many people who are still working or those with families to participate in our activities, especially for those who have to travel across country. Many people are not comfortable flying anymore (me being one of them) and choose to drive their cars instead. Doing so adds another 2 to 5 days to the trip. For myself it's not a problem, I just look at it as a vacation and enjoy it; but too many people I have talked with tell me they would not consider serving as an officer or on a committee that required them to attend our meeting because of the time they would lose from their job or businesses, to say nothing of the expense involved.



When there is a three day show, as there is this year, there is no logical reason to schedule the meetings the way they are being done. I wanted the Uniform Rules meeting on Wednesday and the AFMS Annual Meeting on Thursday this year. That would have left Friday for those of us who are judges to be available for the judging. All my attempts to accomplish (this) were ignored by the individual who is working on the AFMS Convention portion of the week. The reason given was that there would be no time for field trips. I feel, and I am sure many will agree, that our primary reason to attend these meetings is to conduct the business of the AFMS. The field trips are a side luxury, and those who attend for that purpose would be free to arrive and depart as they please. The trips could also have easily been scheduled for the Tuesday before the meetings begin so only those who wanted to participate would have to spend that extra day away from home.

With more and more Regional Federation shows now being 3 instead of 4 days, we need to consider the difficulties and expenses encountered when we ask those coming to the Convention to spend that extra day—and the extra night in the hotel or campground, etc.

How do you feel? I would like to hear from you.

**EDITOR'S NOTE . . .** Jim Robinson, AFMS President, would like to use his column in the AFMS Newsletter as a forum for questions and concerns by rockhounds. Contact him at 904-221-5038, by email at [jhr30@netzero.net](mailto:jhr30@netzero.net), or write to him at 1058 Wilderland Drive, Jacksonville, FL 32225. He would also like to see club news editors print more information about the national organization in their local publications. We will make every effort in the Pick & Pack to comply with that request.

## Pebble Pups



See Pg 8 for Field Trip Details

School's out, and the first field trip for Pebble Pups is planned for June 3rd, Fountain Creek walk. **Drew Malin** will be leading. Call **Jennifer Morris**, our new Pebble Pups Leader, at 310-8367 or email to [ricklovesjen-jen@yahoo.com](mailto:ricklovesjen-jen@yahoo.com) to sign up your 'pup'. Fun for all and a learning experience (without them knowing it!).

## Upcoming Shows

### June 9-14

Rocky Mountain Federation Show, Stillwater, Oklahoma, Payne County Expo Center.

Field Trips—Mon, June 12th, will be a trip to Jet, OK. Great Salt Plains, for the hour glass selenite crystals, with a continuation west to a site for clear selenite sheet crystals, and on to another site for the gypsum "rattle snake eggs".

Tues, June 13th, will be a trip to Lake Stanley Draper and the city of Noble, OK area for rose rocks.

Wed, June 14th, will be a trip to a Ralston, OK quarry(s) for fossils. Mainly crinoid stem pieces and other marine shell types.

### June 16-18

Pikes Peak Gem and Mineral Show in Colorado Springs, an interesting and educational event sponsored by the Colorado Springs Mineralogical Society; see <http://www.csms.us/index.htm>

### August 18-20

Lake George Gem and Mineral Show, downtown Lake George, 40 mi. west of Colorado Springs on Hwy 24.

### August 18-20

Rockin' in Music City, combined AFMS Convention and SE Federation Show in Nashville, TN; see AFMS web site at [www.AMFED.org](http://www.AMFED.org) for complete details.

### September 15-17

The Denver Gem and Mineral Show. The theme this year is Minerals of South America. When you are putting together your exhibit for the CSMS show, think about displaying also at the Denver Show. You can certainly exhibit outside the theme, and you will get free admission for the three days of the show.

### November 11-12

27th Annual New Mexico Mineral Symposium, Macey Center, New Mexico Institute of Mining and Technology, Socorro, New Mexico.

### Free USGS Map, Compass, and GPS Classes

USGS continues to offer these free classes for the public, the 2nd Friday of each month, at the Denver Federal Center, Lakewood, CO. Bldg. 810. Mornings (9-11) are Map & Compass, and afternoons (12-4) are GPS. To register, call 303-2024689 or email [gpsworkshops@usgs.gov](mailto:gpsworkshops@usgs.gov) to reserve a place; bring your GPS unit if you have one.



## Heat Treating Agates

*Reprinted from Ozark Earth Science News, May 2006*

Some agates respond well to heat-treating to restore colors. For example, many Lake Superior agates have lost their vivid reds and oranges. The structures are intact, but the color has faded to almost uniform light tans and browns. To treat, place a layer of clean sand or kitty litter 1/2" deep in a pyrex dish. Place a layer of rocks or slabs in the dish. Cover thinly with sand or kitty litter. Place in an oven at 150 degrees for two hours. This dries out the moisture that could cause the stones to explode. Next, raise the temperature 50 degrees every half hour until 500 degrees is reached. Leave on for two hours at 500 degrees. Turn off the oven to allow cooling, preferably overnight. **No Peeking!** Allow the container to cool completely to room temperature before opening the oven door. This process takes approximately 10 hours.

## Cleaning Sawed Stones

*Reprinted from Pueblo Rockhounds, May 2006*

Don't use laundry detergent to clean oil from material that has just been sawed. Use dishwashing detergent instead. Laundry detergents contain bleaches that may effect colors on many gemstones and slabs. Dishwashing detergents do not have bleaches and are balanced to break down oils, fats, and grease. Comment: Dawn detergent was used, recently, to clean up a spill of animal fat when a trailer truck overturned on an Interstate Highway near Cincinnati, OH.

## Preparing to Show — Hints & Tips

### Glowing Labels

Fluorescent rocks have to be viewed in the dark. To make labels that can also be seen under the UV lamp, mix quinine and water to use as ink. It glows a bright bluish white under black light

*Reprinted from T-Town Hockhound, 2/06*

### Display Stand

Save the inner plastic rings from scotch tape rolls. They make handy stands for spheres.

*Reprinted from Rocky Mountain Federation News, 5/06*

### Pedestal

To display large rocks on a pedestal, remove the top and bottom of a tuna can and spray the can black.

*Reprinted from Rocky Mountain Federation News, 5/06*

### Software Downloads

Here is a great freebie! I use this labeling program all the time. It has pre-designed mineral label formats, and you can easily design your own. You can do anything from micromount labels to sophisticated business cards. Ososoft's Freeware Specimen Labeling Software for Rock Collectors can be downloaded at [www.rockhounds.com/rockshop/minerallabel.shtml](http://www.rockhounds.com/rockshop/minerallabel.shtml).

*Source: Lake George Gem and Mineral Club Newsletter, 2/06*

## Western Interior Paleontological Society (WIPS)

*By Bob Landgraf*

Every other year WIPS sponsors a two-day symposium located at the Colorado School of Mines in Golden, CO. 2007 is the big year for the next symposium. The date has been set for March 3-4, 2007. The 2007 symposium topic will focus on fossils and what they say about evolution on our planet. Experts in the field will be invited from around the country to lecture at the symposium. Make your plans now to attend.

**EDITOR'S NOTE:** We'll be looking to Bob for more information on this symposium as 2007 draws nearer.



## Sphere Making Tips

*By Dan Imel*

*Reprinted from The Quarry, April 2006*

**First Tip:** From a recent trip to another club show, I picked up the following tip: One of their club members had told a member to use a ball chain in a loop long enough to reach into the cup of slurry below with a little sitting on the bottom. It sits on the sphere at the front of one of the cups. It drags the slurry back up to the cups. Seemed to work really well, but I suspect you have to wait until you have a slurry actually started. This has an advantage over machines with an automatic grit feed because it uses the grit over, not so much waste.

**Second Tip:** They had accidentally allowed grit to run back along the motor shaft and ruined a motor when it got into the gears. I was thinking about the problem and came up with the following solution. I love laundry detergent bottles, especially the 300 oz. size, because they have a fairly large flat area you can use. Either by hand with a utility knife or using a hole saw like you'd use to install a door lock (it can be much smaller), cut three circles of plastic from the detergent bottles, one for each shaft on a three-motor sphere machine, with a center hole slightly smaller than the shaft on the motors.

Remove the cups on the sphere machine. Take an O-ring that's tight on the shaft, and push it on ahead of the plastic washer you've made. Leave a slight gap in front of the motor. Place the washer on, then another O-ring to lock it in place to help seal things. No glue necessary. If the shaft is inclined so that the grit runs down the shaft, the washer and O-rings will block it from getting to the motor, much like a collar on a bird feeder helps stop squirrels from climbing up to the food. The spin of the motor will prevent the grit from getting back to the shaft on the other side of the washer. This solution shouldn't effect cooling of the motor either; and since the washer spins with the shaft, it shouldn't wear at all. The detergent bottle plastic doesn't readily degrade with use and is very durable.

If you use a hole saw to cut your washers, use a block of wood as a backer for the saw to cut through to.

## Regular meetings of various groups

**Café Scientifique** features a talk and discussion on some current science topic; 6-30-8:00 p.m. Tuesday evening once a month (approximately the 3rd Tuesday) at the Wynkoop Brewery (Mercantile Room), corner of 18th & Wynkoop Streets, Denver. No charge; all are welcome.  
<http://cafescicolorado.org>

**Colorado Scientific Society**, monthly meetings with one or two speakers on an earth science topic, 3rd Thursday, 7:00 p.m. American Mountaineering Center, 710 10th St. (NE corner with Washington), Golden, CO.  
<http://www.coloscisoc.org>

**Denver Mining Club**, Informal weekly luncheon meetings with a speaker, every Monday, 11:30-1:00, Country Buffet, 8100 W. Crestline Ave, #A3, Littleton, CO (about 1/2 mile north and east of the intersection of Wadsworth Blvd. & Bowles), tel: 303-933-9923. No charge, but all who attend must purchase a lunch at the restaurant. See web site [http://china-resources.net/den\\_min.html](http://china-resources.net/den_min.html)

**Denver Region Exploration Geologists' Society (DREGS)** meets monthly on the 2nd Monday, 7:00 p.m. Consolidated Mutual Water Company (lower level), 12700 W. 27th Ave., Lakewood, CO; no charge, all are welcome to the meetings.  
See <http://www.dregs.org/>

**Rocky Mountain Assoc. of Geologists (RMAG)** has monthly luncheon meetings with a speaker at the Marriott City Center, California St. between 17th & 18th Streets, 11:30 a.m. Luncheon cost is \$24; no reservations are needed for the talk only.  
See <http://www.rmag.org/>

**USGS Colloquium Series**, lectures on Thursday, 1:30-2:30 p.m. Foord Lecture Room, Bldg. 20, Denver Federal Center, Lakewood, CO. USGS staff, visitors, and guests are welcome. See <http://geology.cr.usgs.gov/crg/colloquia.htm>

**Western Interior Paleontology Society (WIPS)**, meets 7:00 p.m. first Monday of the month, Sep-May, Ricketson Auditorium, Denver Museum of Nature and Science, <http://www.wipsppc.com/>.

## Hubba Hubba for Joe Schmoe!

By Cathy Gaber, AFMS Club Rockhound of Year  
(Reprint from May 2006 A.F.M.S. Newsletter)

When was the last time someone in your club was recognized for contributions to the club? It's mid-March, and I have only seven AFMS Club Rockhounds of the Year for 2006. That averages out to one per federation (though 2 federations actually have no submissions). Is there only one person in your federation who deserves to be thanked? I don't think so!!!

Think for just a moment. Is one of your officers doing an outstanding job? Has your shop foreman or field trip director opened new horizons? Has one of your members given a special program or worked with kids? Is there someone who is always there, always willing to pitch in with anything that needs doing? How about your show chair, your librarian, your hospitality chair, or your sunshine person? A club cannot function without the efforts of people like this. Why not take five minutes to show them that you appreciate their efforts. Submissions need to include the name of the exceptional member (or couple), the name of the club, the federation, the name of the submitter and, if applicable, any office held. Anyone in the club can

submit; first come, first serve. Don't forget juniors! They get their own chance to be named AFMS Junior Rockhound of the Year. Please include the age of any junior submission. Each club can submit a name for both adults and juniors every year.



Send this information to me if you are in the Eastern Federation. Send it to your federation representative in other federations. Do it now! Everyone submitted will have their information printed in their regional federation newsletter and the AFMS newsletter. They will also have their name on the list as part of the AFMS convention record. It is a special way to show everyone how important these people are.

Cathy Gaber  
[bg@his.com](mailto:bg@his.com)

### Editor's Note:

CSMS is a member of the Colorado Federation of Mineralogical Societies (CFMS) and the Rocky Mt. Federation of Mineralogical Societies (RMFMS). Nominations can be sent to the Editor or Roger Pittman; we'll make sure it gets to the appropriate person.

**DICK'S ROCK SHOP**  
Cabs/Slabs  
Lapidary Equipment  
Silversmithing Equipment  
Diana Wing - Owner  
719-390-7788  
[www.DicksRockShop.com](http://www.DicksRockShop.com)  
[dwing@dicksrockshop.com](mailto:dwing@dicksrockshop.com)  
7310 S. Highway 85/87 • Fountain, Colorado 80817

**CRYSTALS**  
Gems Minerals Jewelry  
Crystal Skulls  
by Appt. Only  
719-531-7203  
Joe & Marylee Swanson Colorado Springs, CO  
[Krystals@webtv.net](mailto:Krystals@webtv.net)

(713) 633-1163  
**Ackley's  
Rocks & Stamps**  
RHONDA JO HART  
ART & HELENA ACKLEY  
OWNERS  
3230 NORTH STONE AVE.  
COLORADO SPRINGS, CO 80907

Minerals Fossils Artifacts Books Beads  
Custom Jewelry & Repair Rough Turquoise  
**Claim Jumper's Rock Shop**  
Boyde Astemborski, Owner  
(in the penny arcade)  
14 ARCADE (719) 685-5133

**GRAND INCLUSIONS  
ROCK SHOP**  
• MINERALS • ANTIQUE BOTTLES • ARTIFACTS • CRAFTS  
RANDY STAPLETON 2306 E. PLATTE  
719-347-2195 SAT, ONLY 10-5

**Steve & Peggy Willman - Minerals  
Sangre de Cristo Gallery**  
114 Main Street, Westcliffe, CO 81252  
email: [galler@ris.net](mailto:galler@ris.net) 719-783-9459  
Fall Hours: Friday & Saturday 10:00 to 5:00  
Collectable minerals, fossils, crafts & local artists

<b>JUNE 2006 CSMS CALENDAR</b>						
				<b>1</b>	<b>2</b>	<b>3</b> Pebble Pups Field Trip
<b>4</b>	<b>5</b>	<b>6</b>	<b>7</b> 7p Board Meeting	<b>8</b> 7:30p General Assembly & Show Planning Meeting	<b>9</b> 7:30p Crystal Group Meeting	<b>10</b>
<b>11</b>	<b>12</b>	<b>13</b>	<b>14</b>	<b>15</b> 4-9p Show Set Up	<b>16</b> <b>CSMS SHOW</b>	<b>17</b> 12n Jewelry Group ***** Phil Long Expo
<b>18</b> CSMS Show—last day; take-down after 5p	<b>19</b>	<b>20</b>	<b>21</b>	<b>22</b>	<b>23</b> 5p Pick&Pack Input Deadline	<b>24</b>
<b>25</b>	<b>26</b> 7p Faceting Group Meeting	<b>27</b> 7:15p Camera Club Meeting	<b>28</b> 7:30p Fossil Group Meeting	<b>29</b>	<b>30</b>	

## Locations

**Board Meeting:** 2nd Monday @  
7:00p. SilverWood Hotel  
Drew Malin: 531-7594

**Camera Club:** 4th Tuesday @  
7:15p  
1514 North Hancock, COS  
Roger Pittman: 683-2603

**Crystal Study Group:** 2nd  
Friday @ 7:30p, 1514 North Han-  
cock, COS  
Kerry Burroughs: 634-4576

**Jewelry Group:** 3rd Saturday  
@ Noon-4:00p, 6608 Gambol  
Quail Dr. East, COS  
Rick Copeland: 594-6293

**Faceting Group:** 4th Monday  
@ 7:00p, Paul Berry's home  
David Wilson: 635-7891  
dlwilson@pcisys.net

**Fossil Study Group:** 4th  
Wednesday @ 7:30p, John Har-  
rington: 599-0989

**Lapidary Group:** 1st Saturday  
@ Noon 3085 Rhapsody Drive,  
COS  
Drew Malin: 531-7594

**Micromounts Group:** 2nd  
Tuesday @ 7:00p, 1514 North  
Hancock, COS  
Phil McCollum: acc@frii.com  
Moyra Lyne: 442-2673

## Colorado Springs Mineralogical Society Field Trips

**CSMS Pebble Pups**—June 3, 2006; see page 8 for details.

**CSMS Claim**—On July 22, 2006, Ray Berry will lead a field trip to the CSMS claim. We will meet at the Ranger Station (USFS Work Center) just east of Lake George at 8:30 a.m. and leave at 9:00 a.m.

**Things to Bring**—Water, food, sunscreen, bug repellent, and rock tools. A high clear-  
ance, four-wheel-drive vehicle is recommended. A UV lamp can be useful at the  
Eureka tunnel.

Visit field trips on [www.csms.us](http://www.csms.us) for further details or check with Ray Berry or Brent Wil-  
liams.

President	Drew Malin	531-7594	advanceone@adelphia.net
Vice President	Linda Laverty	520-5939	chilipepper24@juno.com
Secretary	Rick Copeland	594-6293	rick.copeland@covad.net
Treasurer	James Bushnell	598-9262	bushy@pyramidpeak.com
Membership Secretary	<i>vacant</i>		
Managing Editor	Bill & Betty Cain	634-8205	bcain2@earthlink.net
Member-at-Large	John Casto	329-0912	Jcasto@UCCS.edu
Member-at-Large	Brent Williams	632-3552	zaphod1863@yahoo.com
Past President	Robert Landgraf	687-3195	RMLWP74@aol.com
Show Chairperson	Lorrie Hutchinson	382-3503	forlorrie_h@yahoo.com
Field Trip Director	Brent Williams	632-3552	zaphod1863@yahoo.com
Librarian	Sarah Udell	237-7983	sarahudell@hotmail.com
Camera Club	Roger Pittman	683-2603	rpittman@netzero.com
Crystal Study	Kerry Burroughs	634-4576	kburroughs@adelphia.net
Faceting Group	Dave Wilson	635-7891	dlwinlson@pcisys.net
Fossil Group	John Harrington	599-0989	harrington1@mindspring.com
Jewelry Group	Rick Copeland	332-7915	rick.copeland@covad.net
Lapidary Group	Drew Malin	531-7594	advanceone@adelphia.net
Micromount Group	Phil McCollum		acc@frii.com
Pebble Pups	Jennifer Morris	310-8367	ricklovesjenjen@yahoo.com



# Minutes...

## COLORADO SPRINGS MINERALOGICAL SOCIETY

### Minutes, General Meeting

May 18, 2006

Drew Malin called the meeting to order at 7:40 p.m.

Minutes accepted as published.

#### ***Treasurer's Report***

Normal activity in CSMS accounts.

#### ***Satellite Groups***

Camera, Crystal, Faceting, Fossil, Jewelry, Lapidary, and Micromount group leaders announced dates, meeting locations, and programs for next month.

#### ***2006 Show Report***

- Show is coming together nicely. Need help to setup Thursday night.
- Typo on setup for cases. 10:00 a.m. Friday is the setup time.
- KKCS Radio is doing double amount of ads. Saturday live spot.
- Postcards for show going out.
- Vendor layout complete.
- 38 vendors signed up. Most returning from last year.
- T-shirts will be provided for security volunteers.
- Need volunteers to sign up.
- June 8 is the next general meeting.
- Looking for donations for silent auction and give-aways for children's gem mine.

#### ***Field Trips***

- Gold Camp Road field trip is May 27. If you don't know the way, meet at the Park and Ride at Corporate Drive and Woodman. Contact Ray Berry.
- Memorial Day trip to Espanola, NM. Contact Marge Regal.
- CSMS claim field trip is in July. Contact Ray Berry.

#### ***Old Business***

- Scholarship applications are coming in. Proposed awarding two scholarships this year to make up for last year. Passed by the membership.

#### ***New Business***

- Charles Webb received a thank you letter from Detrich, Iowa elementary school.
- Drew Malin, Ray Berry, and Paul Berry were interviewed for the *Slice* section of Wednesday's Gazette.

The general meeting was adjourned at 8:00 p.m. followed by Steven Veatch's presentation, "Relics of Florissant's Ancient Past: Volcanoes, Ash, and Fossils."

# CSMS Pebble Pups Field Trip By Drew Malin & Jennifer Morris

**PLEASE NOTE: This trip will replace the Lapidary Club Meeting in JUNE!!**

Hi, All:

Here is the information on the Fountain Creek Walk Field Trip:

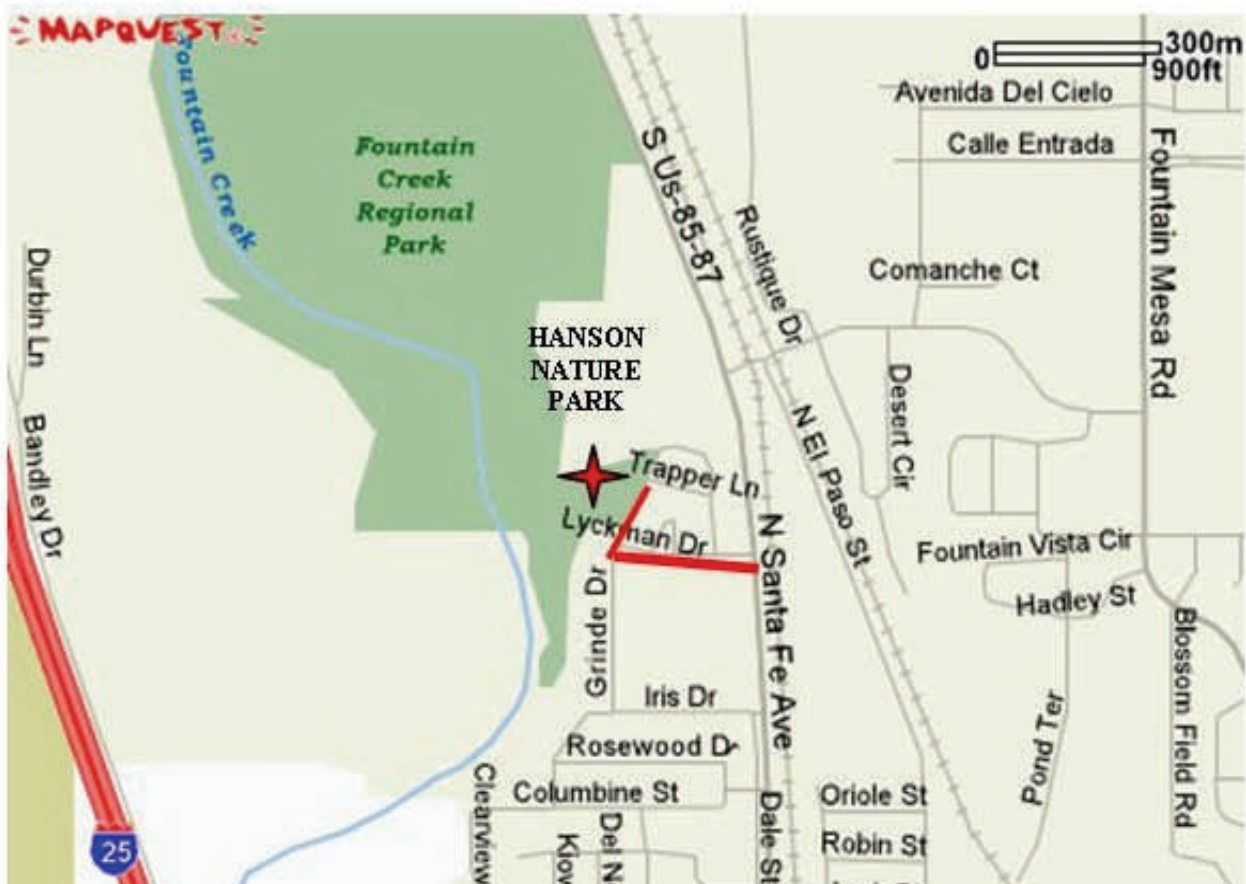
**When:** Saturday, June 3rd, 10:00 AM

**Where:** Hanson Nature Park (see map below)

**Who:** All members are welcome and Pebble Pups (all children) are encouraged to come.

**We will find:** Petrified Wood (lots), Agates, river-tumbled Crystals, and Indian Artifacts.

**Bring:** Wear shorts and tennis shoes, (you will want to wade in a bit). Bring a small back pack, a 3-prong hand garden rake (87 cents at WalMart), and drinking water. No restroom facilities at the site.





**Colorado Springs Mineralogical Society**  
**"All That Glitters is Not Gold"**  
**Rocky Mountain Federation of Mineralogical Societies Convention & Show**  
**Phil Long Expo Center, Colorado Springs, Colorado**

**JUNE 16, 17, & 18, 2006**

**REQUEST FOR COMPETITIVE DISPLAY SPACE**

<b>NAME:</b>		<b>SOCIETY:</b>
<b>ADDRESS:</b>		<b>PHONE:</b>
<b>CITY:</b>	<b>STATE:</b>	<b>ZIP:</b>

Exhibitors are urged to bring their own cases. A limited number of club cases are available upon request. Exhibitors using club cases will need to furnish any risers, linings, extension cords or accessories as needed.  
**EACH CASE WILL BE LIMITED TO 120 WATTS.**

**COMPETITIVE EXHIBIT**

Describe Display:

I will bring my own case	Case Length:	
I will need a case *	Approximate Case Length:	

\* CSMS CASES ARE 36" X 24" OUTSIDE MEASUREMENT

DIVISION \_\_\_\_\_ CLASS \_\_\_\_\_ MASTER    **ADVANCED    JUNIOR    SOCIETY**  
(circle one of the above)

I hereby certify that this exhibitor is a member in good standing of the RMFMS.

\_\_\_\_\_  
 Signature of Society Officer

Set up is Friday, 10:00 a.m., June 16; judging will begin at 9 a.m. Saturday, June 17.  
 Judge/Exhibitor conferences at 11 a.m. Saturday, June 17.

\_\_\_\_\_  
 Signature of Competitive Exhibitor

With the signing of this request, it is mutually agreed that the Colorado Springs Mineralogical Society, the Rocky Mountain Federation, and Phil Long Expo Center shall not be liable to any exhibitor for damage, loss, or destruction of any exhibit or injury to his person for any cause, and the exhibitor expressly waives all claims for injury.

**DEADLINE:**    May 15, 2006  
                     Applications will be accepted on a  
                     Space-available basis after 5/15/06

**RETURN TO:**    Lorrie Hutchinson  
                          10915 Grassland Rd.  
                          Colorado Springs, CO 80925

PLEASE USE ONE FORM FOR EACH ENTRY. FORM MAY BE REPRODUCED.

**Colorado Springs Mineralogical Society**  
***"All That Glitters is Not Gold"***  
**Rocky Mountain Federation of Mineralogical Societies Convention & Show**  
**Phil Long Expo Center, Colorado Springs, Colorado**

**JUNE 16, 17, & 18, 2006**

**REQUEST FOR NON-COMPETITIVE DISPLAY SPACE**

<b>NAME:</b>		<b>SOCIETY:</b>
<b>ADDRESS:</b>		<b>PHONE:</b>
<b>CITY:</b>	<b>STATE:</b>	<b>ZIP:</b>

Exhibitors are urged to bring their own cases. A limited number of club cases are available upon request. Exhibitors using club cases will need to furnish any risers, linings, extension cords or accessories as needed. **EACH CASE WILL BE LIMITED TO 120 WATTS.**

**NON-COMPETITIVE EXHIBIT**

Describe Display:

<input type="checkbox"/> I will bring my own case	Case Length:	
<input type="checkbox"/> I will need a case *	Approximate Case Length:	
<small>* CSMS CASES ARE 36" X 24" OUTSIDE MEASUREMENT</small>		

DIVISION \_\_\_\_\_ CLASS \_\_\_\_\_ MASTER    ADVANCED    JUNIOR    SOCIETY  
(circle one of the above)

I hereby certify that this exhibitor is a member in good standing of the RMFMS.

\_\_\_\_\_  
Signature of Society Officer

Set up is Friday, 10:00 a.m., June 16; judging will begin at 9 a.m. Saturday, June 17.

Judge/Exhibitor conferences at 11 a.m. Saturday, June 17.

\_\_\_\_\_  
Signature of Competitive Exhibitor

With the signing of this request, it is mutually agreed that the Colorado Springs Mineralogical Society, the Rocky Mountain Federation, and Phil Long Expo Center shall not be liable to any exhibitor for damage, loss, or destruction of any exhibit or injury to his person for any cause, and the exhibitor expressly waives all claims for injury.

**DEADLINE:**    May 15, 2006  
Applications will be accepted on a  
Space-available basis after 5/15/06

**RETURN TO:**    Lorrie Hutchinson  
10915 Grassland Rd.  
Colorado Springs, CO 80925

PLEASE USE ONE FORM FOR EACH ENTRY. FORM MAY BE REPRODUCED.





Bill Cain, Editor



P.O. Box 2  
Colorado Springs, CO 80901-0002

Non-Profit Org.  
U.S. Postage  
PAID  
Colo. Sprgs., CO  
Permit No. 66

## Joining the Colorado Springs Mineralogical Society (CSMS)

General Assembly meetings are the third (3rd) Thursday of each month, except August, beginning at 7:30 p.m. at the Colorado Springs Senior Center, 15114 North Hancock Blvd., Colorado Springs, CO. **Visitor are always welcome.**

CSMS also offers Satellite Group meetings that allow more focused attention in specific areas of our members' interests. Our current Satellite Groups consist of the following: Camera Club, Crystal Study Group, Faceting Group, Fossil Study Group, Jewelry Group, Lapidary Group, Micromounts Group, and Pebble Pups. For details of Satellite Group meetings, see page 8.

Yearly dues include 10 issues of the **PICK & PACK**, all field trips (additional fees may be required on some field trips, and members are responsible for all transportation to and from), participation in all Satellite Groups (some groups may request additional fees to help cover resource costs), free admission to the *Western Museum of Mining and Industry*, a year of learning and enjoyment, plus a lifetime of memories.

Individuals—\$20

Family—\$30

Juniors—\$2

If you are interested in joining CSMS or would like more information, we encourage you to attend our next General Assembly meeting (see page 2 for details of the next meeting) or visit our web site: [www.csms.us](http://www.csms.us)