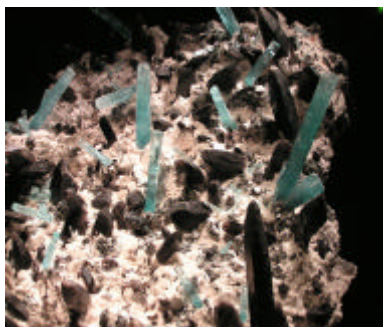


## CHECK OUT THE CRYSTALS IN DIANE'S POCKET

By JIM ERICKSON, ROCKY MOUNTAIN NEWS  
NOVEMBER 10, 2006

**P**rospector Stephen Brancato Jr. was preparing to dig for gemstones on Mount Antero when a Windex-blue crystal of aquamarine—as thick as a Bic pen and more than an inch long—rolled down the hillside and hit him in the knee.

"It was just shining and gleaming and refracting the sun back at me," said Brancato, 35, a high school dropout who moved from Long Island to Colorado and staked a claim in 2002 on Antero's south flank, in the Sawatch Range of central Colorado.



That hexagonal crystal, which rolled into Brancato's life in July 2004, led to the discovery of the largest aquamarine specimen ever found in North America. The reconstructed Diane's Pocket specimen, named for Brancato's mother, glistens and bristles with more than 100 aquamarine crystals, as well as other gems.

It was donated to the Denver Museum of Nature & Science and will go on permanent public display there Nov. 17.

### Inside this issue:

Diane's Pocket	1
President's Corner	2
RMFMS President's Note to CSMS	2
WMMI News	3
Science Writing Workshop	3
Upcoming Shows	3
"Big Red"	4
Silent Auction	5
2007 ACROY	5
Inscribed in Stone	6
January Birthstone	6
Groups, Classifieds, & Advertisers	7
World's Greatest Mineral Locality!	8
Places of Interest	8
Calendar, Locations, & Contacts	9
Banquet Registration Form	10
Member Application	11

Aquamarine is a variety of the mineral beryl that is valued as a gemstone. In fact, it's the official state gemstone of Colorado, and the summit of Mount Antero is a well-known source. Aquamarines have a hexagonal crystal structure and are closely related to emeralds.

The three days following Brancato's discovery were a feverish blur of sledgehammers and pickaxes.

Within an hour, he opened a surface cavity as large as a manhole cover. Gradually, he followed the trail of crystals, excavating a tube-shaped hole 6 feet beneath the surface.

"It didn't stop spitting crystals for three days," Brancato said Thursday. "I was burning out batteries on my head lamp. I was cold, but I didn't know it, and my fingers were bleeding, but I didn't care."

"Those were the most intense days of my life, for sure," he said. "I'm surprised my heart didn't explode from the rush."

It took a couple of weeks to haul 1,000 pounds of crystal-containing dirt and clay down the mountain in backpacks

(See "DIANE'S POCKET" on page 4)

CSMS is an incorporated non-profit organization with these goals:

- To promote and disseminate knowledge of the earth sciences, especially as they relate to mineralogy, lapidary, and fossils.
- To encourage study, collection and fashioning of minerals.
- To accomplish the same through social meetings, lectures, programs, displays, shows, and field trips.
- The Pick&Pack is published monthly to assist and promote the above.

Drew Malin ..... President  
Linda Laverty ..... Vice President  
Rick Copeland ..... Secretary  
James Bushnell ..... Treasurer  
Bill Cain ..... Membership  
Bill & Betty Cain ..... Editors  
John Casto ..... Member at Large  
Brent Williams ..... Member at Large  
Bob Landgraf ..... Past President  
Kaye Thompson ..... Show Chairman  
Brent Williams ..... Field Trip Director

### Proud Members of:

American Federation of Mineralogical Societies (AFMS)  
[www.amfed.org](http://www.amfed.org)

Rocky Mountain Federation of Mineralogical Societies (RMFMS) [www.rmfmts.org](http://www.rmfmts.org)

Colorado Federation of Gem & Mineral Societies (CFMS)  
[www.coloradorocks.org](http://www.coloradorocks.org)

**Colorado Springs  
Mineralogical Society**  
Founded in 1936

**Lazard Cahn**  
Honorary President

**Our Staff...**

Bill & Betty Cain  
Brenda Malin

Editors  
Mailer

We encourage everyone to submit articles, photos, illustrations or observations.

Share your experiences, trials and tribulations, your new finds, or simply your experience at our last field trip.

The ability to write well is NOT a requirement. We will fix the grammar while keeping the author's voice, style, and work intact.

Handwrite it, type it, or email it. Format does not matter. All submissions are welcomed.

**DEADLINE** for items to be included in the next month's issue is the third (3rd) Friday of every month. To submit an item, please use the following:

Photos:

For hardcopy photos, mail to the address below or bring them to the General Assembly Meeting. All photos remain the property of the submitter and will be returned. Electronic photos should be submitted at resolutions above 200 dpi in TIF, BMP, JPG, or PIC format.

Articles:

Mail or email to the addresses below.

**ALL FORMATS ARE WELCOMED.**

**Email:** bcain2@earthlink.net or  
Info@csms.us

Address:

PO Box 2  
Colorado Springs, CO 80901

Phone:

(719) 634-8205

*PICK&PACK is published ten (10) times per year. 250-275 mailed per month.*

*Unless otherwise marked, materials from this publication may be reprinted. Please give credit to the author and PICK&PACK.*

## PRESIDENT'S CORNER



Drew Malin

**W**ell, December was an interesting month, weather wise. As you all know the storm stopped our December General Assembly, and now we have to find a way of voting in our slate of officers before we swear them in at the Installation Banquet.

The Board slipped in a meeting between storms, and we have decided to vote in the officers at a short club meeting just before the Banquet. So, if possible, we encourage all of our members to be at the SilverWood as close to 6:30 pm as possible so we can squeeze this in before dinner.

Once more, the slate of officers are as follows:

**Drew Malin**—President

**Linda Lavery**—Vice President

**Roger Pittman**—Secretary

**Jim Bushnell**—Treasurer

**Jim Casto**—Member-at-Large

**Brent Williams**—Member-at-Large

**Bill & Betty Cain**—Managing Editors

**Bob Landgraf** will continue as Past President on the Executive Committee.

Thanks to Rick Copeland, retiring Secretary, for a job well done!

Again, I encourage all members to attend the Banquet. You can send the enclosed application with your check up until Friday, January 12th, and I'll still get it in time. If you forget, no problem; just email or call me, and let me know how many are coming by Wednesday, January 17th by 5:00 pm. You can pay at the door. *Don't forget—you don't have to come for dinner.* The installation ceremonies and speaker start at 8:00 pm, and we'll have plenty of room for all members that just want to make this part of the meeting.

Let's start 2007 off right with a big turnout at our Annual Banquet; it's a great time! Hope to see everyone there.

Drew

*Editor's Note: Drew has a new email address: advanceone@comcast.net, and his phone number is (719) 531-7594. The registration form is on page 10 of this issue. If you call, please indicate to Drew your meal choice. Should the fabulous Colorado weather pull another trick on us, an email announcement will be sent out and your registration fee will be refunded.*

*P.S.—The SilverWood hosts a first-class banquet, and the food is excellent!*

## RMFMS PRESIDENT'S NOTE TO CSMS

### Members of the Colorado Springs Mineralogical Society:

Thank you for honoring your club President, **Drew Malin**, as **AFMS 2006 Club Rockhound of the Year**. I enjoyed reading about him in the AFMS newsletter; he has certainly put in a lot of time and effort to further our hobby. I hope that articles like yours will help encourage other clubs in our Federation to so honor one of their members. Thanks also to Betty Cain who submitted the article.

Richard Jaeger  
RMFMS President

## Western Museum of Mining & Industry hosts Dr. Vince Matthews, State Geologist of Colorado

**February 8, 2007**

**7:00 p.m.**

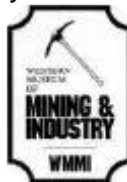
**D**id you know that more than 774 different types of minerals are found in Colorado? Locked within the rocks of Colorado are awesome stories recorded by three billion years of geologic activity. Join us at the Western Museum of Mining & Industry to hear Colorado's State Geologist, **Dr. Vince Matthews**, present, *Messages in Stone: Colorado's Colorful Geology*, based on the Colorado Geological Survey's award winning book of the same name. In conjunction with WMMI's ongoing exhibit, Colorado Rockhounding, Dr. Matthews will discuss Colorado's unique oddities and beauties through stunning photography and incisive graphics that highlight the state's geologic life. In addition, Dr. Matthews' book, *Messages in Stone: Colorado's Colorful Geology*, will be available for purchase and signing. Please RSVP at 719-488-0880.

The Western Museum of Mining & Industry is located just off I-25 at the Gleneagle exit, #156A—just across from the north entrance to the U.S. Air Force Academy.

Dr. Vince Matthews received Bachelors and Masters degrees in Geology from the University of Georgia and a Ph.D. from the University of California, Santa Cruz. He has held tenured positions at two universities and has taught geology at the University of California, University of Northern Colorado, Arizona State University, the Frank Lloyd Wright School of Architecture, and the University of Texas of the Permian Basin. As an executive in the petroleum industry for Amoco, Lear, Union Pacific, and Penn Virginia, Dr. Matthews explored in virtually every basin in the United States, including Alaska and the Gulf of Mexico.

He is the author of more than 50 technical articles and abstracts and was senior editor of *Messages in Stone: Colorado's Colorful Geography*.

The Western Museum of Mining & Industry is a nonprofit museum founded in 1970. We educate over 8,000 school children a year on the importance of mining in the American west. The telephone number is 719-488-0880, and our web address is [www.wmmi.org](http://www.wmmi.org).



## SCIENCE WRITING WORKSHOP

BY STEVEN WADE VEATCH

❄️

“Anyone can  
do this, and a  
good article  
could be  
researched and  
written in less  
than 5 hours.”

**I**would like to propose a 3-4 hour workshop on science writing. The workshop would be directed to our members. I would teach the basics of science and interpretive writing and would include a lifetime of tips, tricks, and other methods to produce a good one or two page article. Research methods and photography will also be included.

*Editor's Note: WMMI will host the workshop on a Saturday morning in February—date and time to be announced. To sign up, contact:*

**Steven Veatch**, [sgeoveatch@att.net](mailto:sgeoveatch@att.net) or **Brad Poulson**, [education@wmmi.org](mailto:education@wmmi.org).

## Upcoming Shows

### January 12-14

Denver Area Mineral Dealers 1st Annual show. Holiday Inn Denver West, 14707 W. Colfax Ave, Golden, CO.

### January 19-21

50th Annual Gila County Gem & Mineral Show, Globe, AZ. Contact Gill Morrow 928-812-0561.

### February 23-25

Denver Gem and Mineral Guild's Gem and Mineral Show, Jefferson County Fairgrounds, Golden, CO.

### March, 2nd Weekend

Deming Gem & Mineral Society Rockhound Roundup, Deming, NM.

### March 16-18

Treasurer's of the Earth, ABQ Gem & Mineral Club's 38th annual show. [www.agmc.info](http://www.agmc.info).

### March 23-25

Fort Collins Rockhounds 46th Annual Gem & mineral Show, Geodes and Copper Minerals, [fcrockhounds@yahoo.com](mailto:fcrockhounds@yahoo.com).

### March 23-25

Ada Gem, Mineral & Fossil Club, Ada, OK. Contact Ed Vermillion, [okieed42@classicnet.net](mailto:okieed42@classicnet.net).

### April 20-22

Meteorites & Dazzling Treasures, 54th annual Wichita Gem and Mineral Society show. Contact Gene Maggard [gandpmagard@wildblue.net](mailto:gandpmagard@wildblue.net).

### May 18-19

Annual Swap, Ellinwood Park, Ks 620-564-3300

### June 7-10

**RMFMS/AFMS** Regional Federation show at Roswell, NM.

### June 23-24

CSMS Annual Gem & Mineral Show, "Barite - the Industrial Beauty", Phil Long Expo Center, Colorado Springs, CO. [info@csms.us](mailto:info@csms.us).

### August 9-12

**CONTIN-TAIL 2007.** Contact: Carolyn Tunnicliff, 303-833-2939 [ctunnicliff@comcast.net](mailto:ctunnicliff@comcast.net).

### Free USGS Map, Compass, and GPS Classes

USGS continues to offer these free classes for the public, the 2nd Friday of each month, at the Denver Federal Center, Lakewood, CO. Bldg. 810. Mornings (9-11) are Map & Compass, and afternoons (12-4) are GPS. To register, call 303-2024689 or email [gpsworkshops@usgs.gov](mailto:gpsworkshops@usgs.gov) to reserve a place; bring your GPS unit.

## DIANE'S POCKET—continued from page 1

to Brancato's ATV.

The prospector, who lives east of Salida in the town of Howard, later contacted Bryan Lees, president of Collector's Edge Minerals Inc. in Golden. He told Lees he wanted to reconstruct the crystals as they would have appeared when they formed on the walls of the underground chamber millions of years ago.

The reconstructed specimen would then be donated to the Denver Museum of Nature & Science, Brancato insisted.

To make Brancato's dream a reality, Lees persuaded Bruce Oreck, a Denver Museum of Nature & Science trustee and an avid mineral collector, to buy the Diane's Pocket specimen and donate it.

Brancato said he earned "somewhere in the low six figures" from the deal, which allowed him to establish his Howard-based company, Bona Fide Mining Inc.

The money also paid for the painstaking cleaning and reconstruction project, which took about a year, Lees said.

Epoxy was used to glue the crystals to the slabs of feldspar rock from the chamber walls. The finished product measures 37 inches by 25 inches and weighs about 100 pounds.

"The museum really has an Earth treasure," he said. "It will draw audiences for as long as the museum is there."

### If you go

Diane's Pocket, which glistens with more than 100 aquamarine crystals, will go on permanent display in the Coors Gem and Mineral Hall at the Denver Museum of Nature & Science, 2001 Colorado Blvd., on Nov. 17.



R. Stucky and Paul Morgan, Denver Museum of Nature & Science

Photo provided by Terry Beh, CSMS

## MINERAL COLLECTING, DATA MINING, AND "BIG RED"

BY ANDY WEINZAPFEL

In 1997, a comprehensive mineralogical work was published that is becoming a classis: *Minerals of Colorado*. Sponsored by the Colorado Chapter of Friends of Mineralogy, it is the product of 2 decades of work by various dedicated members of the Colorado mineralogical community, especially the USGS. One of the key contributors, **Pete Modreski**, is a current member of our club.

This two inch-thick reference, in my opinion, is undoubtedly the most important single book ever published for serious Colorado mineral collectors. It is a considerable expansion and update of USGS Bulletin 1114, *Minerals of Colorado: a 100 Year Record*, published in 1961 by Eckel. Its superficial decorative shell will quickly become tattered with use; underneath is a durable red hard back, hence "Big Red". This work deserves to be closely examined cover to cover by anyone looking for clues to collecting sites, using the premise that the best place to explore is at or near locations where minerals have historically been found and documented.

"Big Red" has a research friendly format. Near the

front is a section titled *Selected Mineral Localities*. This is a listing of classic, traditional localities by county, plotted on maps for easy reference. Experienced collectors will recognize most of these. A highly detailed *Alphabetical Listing of Minerals* follows, subdivided by county. This is the "meat and potatoes" of the book, including many citations indicating the original source for the information presented. In the middle, you will be entertained by beautiful photos of some remarkable Colorado specimens. At the end is a bibliography for those who want to do further research on a specific mineral locality. It may be necessary to "take it to this level" to maximize understanding of a particular item of interest in preparation for a follow-up field investigation.

This remarkable book is not cheap. Cruising the net recently, I found new copies selling for as low as \$113.66 on Ebay to \$150 on Amazon.

Fortunately, you don't have to pay anything to review it. "Big Red" can be found in both the Penrose (Colorado Springs) and Florissant libraries.

(See "Big Red" on page 5)

## SILENT AUCTION LURES BARGAIN HUNTERS

BY BETTY CAIN

**T**he CSMS Silent Auction, held on December 9th at the SilverWood Hotel & Conference Center, drew a crowd of bargain and treasure hunters. A Bake Sale also tempted the sweet tooth of attendees. This was the first year for the Bake Sale, and CSMS officials were very pleased with it's success. The hot cocoa and coffee was great with the delicious cookies, treats, cakes, decorate-your-own cupcakes, and chocolate mice. Great idea, **Linda Laverty!**

Auctioned items were donated by members to raise funds for the Crystal Study Group, the subsidiary group selected by the Executive Committee to benefit from this year's event. Leader of the Crystal Study Group, **Kerry Burroughs**, confided that the funds would be used to secure a crystal field claim for CSMS.



If you missed this event, you didn't get to see the fun of **Drew Malin** and **Jim Bushnell** having bidding wars! It was exciting to see who would have the last bid on the list when time was musical chairs. There were many bidder's fancy and a lot of real bargain last person to bid on an item. Drew won the Bake Sale table that we finally started a tab for him!

The event started at 10:00 a.m. and closed at 3:00 p.m. to the chagrin of bidders who wanted more. Near the close, a \$5 top bid could win a suitcase full of donated treasures!

Another 'first' this year was the addition of member tables for shoppers. CSMS has some very talented silversmith and jewelry makers. Other items for sale were admired by everyone attending.

Congratulations to all who won, and a big *THANK YOU* to all who donated items and helped at the auction. I overheard some bidders say their Christmas shopping was now finished!



Pebble Pup, Jordan Bushnell, mans (or womans) the Bake Sale table, packaging old fashion peanut butter cookies for an eager customer. Good job, Jordan!



**“BIG RED”** - continued from page 4

It will likely be in the reference section, so I doubt you can take it home. Do yourself and your club a favor by spending time examining “Big Red” and following up on the menu of clues contained in it. Perhaps your efforts will generate an exciting future field trip.

## **2007 AFMS CLUB ROCK- HOUND OF THE YEAR**

## CSMS HONORED AGAIN!

**A**s the saying goes, "Behind every great man there's a woman." In the Colorado Springs Mineralogical Society that woman is **Linda Laverty**, our Vice President.

We're very blessed to have Linda carry the heavy burden of obtaining speakers, ensuring we have presentations at the meetings, conducting board

meetings, filling in for the president, and being our advocate in all matters presented to the CSMS President and Board.

Linda takes her duties as VP seriously and performs them in a professional manner with a great deal of dedication, organization, and finesse. While maintaining a successful professional career, she still finds time to efficiently serve as our vice president. If she said it, she meant it—a woman of her word.

Thank you, Linda, for serving CSMS so faithfully, keeping Drew (our president) focused, replacing bingo at the Holiday meeting, and for agreeing to continue doing the job in 2007. You are greatly appreciated!!

Bill Cain, Co-Editor

*Note: Official publication of Linda's recognition as 2007 ACROY will be in the February AFMS Newsletter. **CONGRATULATIONS, LINDA!***

**W**hat's New, What's True, and How to Teach It. The WIPS 2007 Founders Symposium will present the fascinating story of evolution on earth as it's told through fossils and geology—from the first microorganisms to the emergence of life on land to the theories of Darwin, Gould, Eldridge, and others. In addition to presentations of cutting edge research from leading scientists, the symposium will offer valuable information for educators who are interested in integrating evolution into their science curriculum.

The Western Interior Paleontological Society Founders Symposium, *"Inscribed in Stone, Evolution and the Fossil Record"*, March 3-4, 2007.

### Speaker Preview

A number of exciting speakers are already lined up for our next symposium, including **Donald Prothero**, paleontologist and author of *"Evolution of the Earth"*, and **Judy Scotchmoor**, director of public education and programs at the University of California Museum of Paleontology and an authority on teaching evolution.

Prothero is a professor at Occidental College and lecturer in Geobiology at the California Institute of Technology. Dr. Prothero received his B.A. from the University of Riverside and earned M.A., M.Phil., and Ph.D. degrees from Columbia University. He teaches physical and historical geology, sedimentary geology, and paleontology. His specialties are mammalian paleontology and magnetic stratigraphy of the Cenozoic. His current research focuses on the dating of the climatic changes that occurred between 30 and 40 million years ago, using the technique of magnetic stratigraphy.

Scotchmoor received her B.S. in Biological Sciences from UC Berkely in 1966 and her Secondary Teaching Credential from Hayward State University the following year. After 24 years of teaching math and science to 7th and 8th graders, she returned to her alma mater and is now Assistant Director of UC Museum of Paleontology. Her primary interest is in the use of paleontology and technology as vehicles for improving science education in the classroom.

More information and registration forms can be found at [wipsppc.com](http://wipsppc.com).

## CHRISTMAS IN FEBRUARY!!

**I**f you were disappointed that you didn't get to enjoy the fun of the "White Buffalo" game at the cancelled December General Assembly, you're in luck. We've planned it after the shortened February General Assembly. So, bring your wrapped gift and your favorite holiday snack, and **LET THE FUN BEGIN!**

## BIRTHSTONE FOR JANUARY: GARNET

FROM MINERAL GALLERIES.COM

**A**s a gemstone, garnets have had a mixed reputation. Garnets do possess high indices of refraction, are hard enough, have pretty colors, are wonderfully transparent, lack cleavage, and are durable; thus making good candidates for gemstones. However, many people consider garnets to be inferior to other colored gems. This may be due to garnet's relative abundance and widespread use, and therefore a (typically) low price. Garnets are greatly variable in colors and varieties, though, and many of these are both rare and beautiful, producing genuinely precious gemstones. Some garnets are truly unique in the mineral kingdom and have much to offer as both gemstones and mineral specimens.



The main differences in physical properties among

the members of the garnet group are slight variations in color, density, and index of refraction. The most common crystal shape for garnets, however, is the rhombic dodecahedron, a twelve sided crystal with diamond-shaped (rhombic) faces. This basic shape is the trademark of garnets, for no other crystal shape is so closely associated with a single mineral group like the rhombic dodecahedron is with garnets.

Most garnets are red in color, leading to the erroneous belief that all garnets are red. In fact, a few varieties, such as grossular, can have a wide range of colors, and uvarovite is always a bright green. As a mineral specimen, garnets usually have well shaped and complex crystals, and their color and luster can make for a very beautiful addition to a collection. At times, garnets are accessory minerals to other valuable and pretty gem minerals such as topaz, beryl, tourmaline, vesuvianite, and diopside making these specimens extra special.

## Regular meetings of various groups

**Café Scientifique** features a talk and discussion on some current science topic; 6-30-8:00 p.m. Tuesday evening once a month (approximately the 3rd Tuesday) at the Wynkoop Brewery (Mercantile Room), corner of 18th & Wynkoop Streets, Denver. No charge; all are welcome.

<http://cafescicolorado.org>

**Colorado Scientific Society**, monthly meetings with one or two speakers on an earth science topic, 3rd Thursday, 7:00 p.m. American Mountaineering Center, 710 10th St. (NE corner with Washington), Golden, CO.

<http://www.coloscisoc.org>

**Denver Mining Club**, Informal weekly luncheon meetings with a speaker, every Monday, 11:30-1:00, Country Buffet, 8100 W. Crestline Ave, #A3, Littleton, CO (about 1/2 mile north and east of the intersection of Wadsworth Blvd. & Bowles), tel: 303-933-9923. No charge, but all who attend must purchase a lunch at the restaurant. See web site [http://china-resources.net/den\\_min.html](http://china-resources.net/den_min.html)

**Denver Region Exploration Geologists' Society (DREGS)** meets monthly on the 2nd Monday, 7:00 p.m. Consolidated Mutual Water Company (lower level), 12700 W. 27th Ave., Lakewood, CO; no charge, all are welcome to the meetings. See <http://www.dregs.org/>

**Rocky Mountain Assoc. of Geologists (RMAG)** has monthly luncheon meetings with a speaker at the Marriott City Center, California St. between 17th & 18th Streets, 11:30 a.m. Luncheon cost is \$24; no reservations are needed for the talk only.

See <http://www.rmag.org/>

**USGS Colloquium Series**, lectures on Thursday, 1:30-2:30 p.m. Foord Lecture Room, Bldg. 20, Denver Federal Center, Lakewood, CO. USGS staff, visitors, and guests are welcome. See <http://geology.cr.usgs.gov/crg/colloquia.htm>

**Western Interior Paleontology Society (WIPS)**, meets 7:00 p.m. first Monday of the month, Sep-May, Ricketson Auditorium, Denver Museum of Nature and Science, <http://www.wipsppc.com>

## CLASSIFIEDS . . .

**NOTICE**—Items listed for sale in the Pick&Pack are displayed only as an informational service to our members and advertisers. CSMS and/or the Pick&Pack do not promote nor warranty any item displayed. The sellers and buyers are responsible for the condition and ownership of any item shown.

More  
Bang for  
Your \$\$

### Attention Advertisers

**CSMS PICK&PACK**



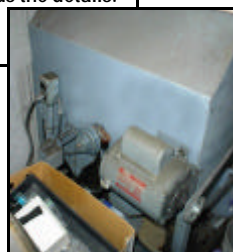
It's time to renew your ad.

Mail your renewal today to CSMS, PO Box 2, COS 80901

Free classifieds for special items—just send us the details.



**Mettler H33AR Electronic Scale**  
160 gal max; accurate to .0001 gal.  
Dick's Rock Shop



**Highland Park 24" Saw**  
Closed Cabinet with Auto Feed, on casters, good shape, no leaks—\$2500

### DICK'S ROCK SHOP

- Natural Stone Tools
- Natural Stone Eggs
- Exotic Wood Pine Sets
- Mineral and Fossil Specimens
- Precious and Semiprecious Gemstones
- Gold and Silver Jewelry
- Natural Stone and Wood Handicrafts

- Cabs/Slabs
- Lapidary Equipment
- Silvercrafting Equipment

**Diana Wing - Owner**  
**719-390-7788**  
[www.DicksRockShop.com](http://www.DicksRockShop.com)  
[dwing@dicksrockshop.com](mailto:dwing@dicksrockshop.com)

7310 S. Highway 85/87 • Fountain, Colorado 80817

### CRYSTALS

Gems Minerals Jewelry  
Crystal Skulls  
by Appt. Only  
**719-531-7203**

Joe & Marylee Swanson    Colorado Springs, CO  
[Krystals@webtv.net](mailto:Krystals@webtv.net)

(719) 633-1153

### Ackley's Rocks & Stamps

RHONDA JO HART  
ART & HELENA ACKLEY  
OWNERS

3230 NORTH STONE AVE.  
COLORADO SPRINGS, CO 80907

Minerals   Fossils   Artifacts   Books   Beads  
Custom Jewelry & Repair   Rough Turquoise

### Claim Jumper's Rock Shop

Boyde Astemborski, Owner  
(in the penny arcade)

14 ARCADE    (719) 685-5136

### GRAND INCLUSIONS ROCK SHOP

\*MINERALS   \*ANTIQUÉ BOTTLES   \*ARTIFACTS   \*CRAFTS

RANDY STAPLETON    2306 E. PLATTE  
719-347-2195    SAT, ONLY 10-5

### Steve & Peggy Willman - Minerals Sangre de Cristo Gallery

114 Main Street, Westcliffe, CO 81252  
email: [gallery@ris.net](mailto:gallery@ris.net)   719-783-9459  
Fall Hours: Friday & Saturday 10:00 to 5:00

Collectable minerals, fossils, crafts & local artists

# THE WORLD'S GREATEST MINERAL LOCALITY

By DR. PETE MODRESKI, USGS

## CSMS 2007 BANQUET PRESENTATION

Every collector or mineralogist probably has their own idea of what should qualify as the "World's Greatest Mineral Locality". Even the same person, considering different aspects of minerals, and thinking about it at different times, might offer different ideas for this. The theme of Pete's presentation is one person's view of the answer to this question; and perhaps, the answer he presents will be somewhat tongue-in-cheek, since by other standards, even he might admit that perhaps this does not "really" qualify as the single, "greatest mineral locality" . . . if there even is any such thing.

But Pete's talk will be about a mineral locality that is, nonetheless, all of these things below; perhaps this can help you to guess what it might be. At the beginning of the banquet itself, everyone will have the opportunity to express their own opinion about what they think is "The World's Greatest Mineral Locality".

Pete's locality is all of the following:

- Colorful
- Of great historic interest
- Well known to collectors, mineralogists, and geologists
- The source of MANY rare and unusual minerals
- Geologically, situated within metamorphic rocks
- Someplace one can readily visit—and very much worth visiting
- Located in the far east
- Specially connected to Pete's own background
- Has a mineral named after it
- Has a special connection to Christmas
- People always talk about it in glowing terms

To learn the answer to this locality, you'll need to attend the CSMS 2007 Annual Banquet! Registrations should be made by January 12th for the event on January 18th (see form in this issue).

## PLACES OF INTEREST BY PETE MODRESKI

The Colorado School of Mines Geology Museum moved to a new building several years ago and has superb mineral, geology, and fossil exhibits in its new quarters, including special displays of Colorado minerals. It's located at 13th and Maple Streets in Golden, on the CSM campus. Hours are 9-4 Mon-Sat, 1-4 Sundays; no admission charge. The museum is open through Dec 17 but will be closed over the holidays, Dec 18-Jan 7.

For all science educators, the Rock Room at the USGS Core Research Center is, as we hope most of you already know, a place where you can come and gather up specimens to use or show in your classes from our stock of "surplus" rock, mineral, and fossil specimens. During the holiday term break might be a good time for you to come by and combine it with a visit to the Map Sales room in the same building, 810, at the Denver Federal Center in Lakewood. We always have someone there, weekdays from 8 or 9 until 4 or 5. If you want to visit, it's best to call in advance to the Core Research Center; someone will answer your call and provide exact directions. We almost always

have granite, basalt, gneiss, sandstone, shale, limestone, rocksalt, pumice, mica, calcite, quartz, etc.; other more unusual things are "whatever's available" (rocks du jour?).

Happy New Year 2007



Martin Luther King, Jr.

Sunday	Monday	Tuesday	Wednesday	Thursday	Friday	Saturday
<b>JANUARY 2007 — CSMS CALENDAR</b>						
	<b>1</b> New Year's Day	<b>2</b>	<b>3</b>	<b>4</b> 7p Board Mtg	<b>5</b>	<b>6</b> CNX -Lapidary Group Meeting
<b>7</b>	<b>8</b>	<b>9</b> 7p Micromounts Group Meeting	<b>10</b>	<b>11</b>	<b>12</b> 7:30p Crystal Study Grp Mtg	<b>13</b>
<b>14</b>	<b>15</b> MLK's Birthday	<b>16</b>	<b>17</b>	<b>18</b> 6p Annual Banquet	<b>19</b>	<b>20</b>
<b>21</b>	<b>22</b> 7p Faceting Group Meeting	<b>23</b> 7:30p Camera Club Meeting	<b>24</b> 7:30p Fossil Study Grp Mtg	<b>25</b>	<b>26</b>	<b>27</b>
<b>28</b>	<b>29</b>	<b>30</b>	<b>31</b>			

## Locations

**Board Meeting:** 1st Thursday @ 7:00p. SilverWood Hotel  
Drew Malin: 531-7594

**Camera Club:** 4th Tuesday @ 7:30p 1514 Hancock, COS  
Roger Pittman: 683-2603

**Crystal Study Group:** 2nd Friday @ 7:30p, 1514 North Hancock, COS;  
Kerry Burroughs: 634-4576

**Jewelry Group:** Meets on informal basis; if interested, contact Rick Copeland: 594-6293 or Bill Arnsen: 749-2328

**Faceting Group:** 4th Monday @ 7:00p, Various Locations  
David Wilson: 635-7891  
dlwilson@pcisys.net

**Fossil Study Group:** 4th Wednesday @ 7:30p.  
John Harrington: 599-0989

**Lapidary Group:** 1st Saturday @ Noon 3085 Rhapsody Drive, COS.  
Drew Malin: 531-7594

**Micromounts Group:** 2nd Tuesday @ 7:00p, 1514 North Hancock, COS  
Phil McCollum: acc@friei.com  
Moyra Lyne: 442-2673

## REFRESHMENTS FOR GENERAL ASSEMBLY MEETINGS

January=Banquet  
February=Everyone  
March=Camera  
April=Crystal & Jewelry

May=Faceting  
June=Fossil  
July=Lapidary  
August=No Meeting

September=Micromounts  
October=Board  
November=Camera  
December=Everyone

PRESIDENT	Drew Malin	531-7594	advanceone@comcast.net
VICE PRESIDENT	Linda Lavery	520-5939	chilipepper24@juno.com
SECRETARY	Roger Pittman	683-2603	prpittman@netzero.com
TREASURER	James Bushnell	598-9262	bushy@pyramidpeak.com
MEMBERSHIP SECRETARY	Bill Cain	634-8205	bcain2@earthlink.net
MANAGING EDITORS	Bill & Betty Cain	634-8205	bcain2@earthlink.net
MEMBER-AT-LARGE	John Casto	329-0912	Jcasto@fvs.edu
MEMBER-AT-LARGE	Brent Williams	632-3552	zaphod1863@yahoo.com
PAST PRESIDENT	Robert Landgraf	687-3195	RMLWP74@aol.com
SHOW CHAIRPERSON	Kaye Thompson	636-2978	
FIELD TRIP DIRECTOR	Brent Williams	632-3552	zaphod1863@yahoo.com
LIBRARIAN	Sarah Udell	237-7983	sarahudell@hotmail.com
CAMERA CLUB	Roger Pittman	683-2603	prpittman@netzero.com
CRYSTAL STUDY	Kerry Burroughs	634-4576	kburroughs@adelphia.net
FACETING GROUP	Dave Wilson	635-7891	dlwinlson@pcisys.net
FOSSIL GROUP	John Harrington	599-0989	harrington1@mindspring.com
JEWELRY GROUP	Rick Copeland	332-7915	rick.copeland@covad.net
LAPIDARY GROUP	Drew Malin	531-7594	advanceone@adelphia.net
MICROMOUNT GROUP	Phil McCollum		acc@friei.com
PEBBLE PUBS	Vacant		



# Colorado Springs Mineralogical Society

## 2007 Banquet Registration

### January 18, 2007



*The SilverWood Hotel & Conference Center*  
505 Popes Bluff Trail  
Colorado Springs, CO 80907  
719-598-7656

Name(s) \_\_\_\_\_  
\_\_\_\_\_  
\_\_\_\_\_

Phone #: \_\_\_\_\_

Number of Beef/Chicken Dinners: \_\_\_\_\_

Number of Vegetarian Dinners: \_\_\_\_\_

Total Number of Dinners: \_\_\_\_\_

x \$15.00

Total Enclosed \_\_\_\_\_

Send checks made payable to **CSMS** only along with this registration by 1/12/07 to:

Drew Malin, President  
3085 Rhapsody Dr.  
Colorado Springs, CO 80920



Colorado Springs Mineralogical Society, Post Office Box 2, Colorado Springs, CO 80901

## APPLICATION FOR MEMBERSHIP

1. All memberships run from January 1 to December 31.
2. Any person joining the CSMS as a new member after June 30<sup>th</sup> shall pay half of the yearly rate. Any person joining as a new member after October 1<sup>st</sup> received membership for November and December plus the following year beginning January 1. The partial year membership shall not apply towards the 25 year Lifetime Membership.
3. Anyone who has previously been a member **MUST** pay the full rate each year **REGARDLESS** of the time of the year they pay their dues.
4. Members who have paid their dues for 25 years will be awarded a Lifetime Membership. Lifetime Members receive all of the CSMS benefits and no longer have to pay the annual dues.
5. Members in good standing receive the following benefits: 10 issues of the CSMS newsletter, *The Pick&Pack*, right to participate in all field trips (additional fees may be required on some field trips and members are responsible for all transportation to and from), participation in one or all Satellite Groups (some groups may request additional fees to help cover resource costs), free admission to the Western Museum of Mining and Industry, a year of learning and enjoyment, plus a lifetime of memories.

LAST				FIRST		MIDDLE	
SPOUSE							
STREET				CITY			
STATE		ZIP		EMAIL			
PHONE				CELL			
HAVE YOU PREVIOUSLY BEEN A MEMBER OF CSMS				NO	<input type="checkbox"/>	YES	<input type="checkbox"/>
YOU ARE PAYING FOR THE YEAR					WHEN		
				Each year the Colorado Springs Mineralogical Society publishes a Membership Directory. The directory is distributed to members <b>ONLY</b> .			
Your dues <b>MUST</b> accompany this application.				<input type="checkbox"/> Check if you would <b>NOT</b> like your name and address included.			

	Existing Member	All Members	New Member	
	Before Jan 31	After Jan 31	After June 30	Oct 1 – Jan 31
<input type="checkbox"/> JUNIOR MEMBERSHIP (12 TO 17 YEARS OLD)	<input type="checkbox"/> \$2.00	<input type="checkbox"/> \$2.00	<input type="checkbox"/> \$1.00	<input type="checkbox"/> \$2.00
<input type="checkbox"/> REGULAR MEMBERSHIP (18 AND OVER)	<input type="checkbox"/> \$15.00	<input type="checkbox"/> \$20.00	<input type="checkbox"/> \$10.00	<input type="checkbox"/> \$15.00
<input type="checkbox"/> FAMILY MEMBERSHIP (PARENTS & DEPENDENTS UNDER 18)	<input type="checkbox"/> \$25.00	<input type="checkbox"/> \$30.00	<input type="checkbox"/> \$15.00	<input type="checkbox"/> \$25.00

<b>YOUR INTERESTS</b> <i>Please check ALL that apply</i>			
CRYSTALS <input type="checkbox"/>	MICROMOUNTS <input type="checkbox"/>	FOR FAMILY MEMBERS, PLEASE LIST CHILDREN AND AGES	
FOSSILS <input type="checkbox"/>	FACETING <input type="checkbox"/>		
LAPIDARY <input type="checkbox"/>	SILVERSMITHING <input type="checkbox"/>		
JEWELRY <input type="checkbox"/>	PHOTOGRAPHY <input type="checkbox"/>		
METEORS <input type="checkbox"/>	FLUORESCENTS <input type="checkbox"/>		
<b>VOLUNTEER CAPABILITIES</b> <i>Clubs are made up of volunteers!</i>			
ARTIST <input type="checkbox"/>	WRITING <input type="checkbox"/>	EDITOR <input type="checkbox"/>	Sometimes knowing where our members are employed or retired from helps us when we are looking for special information or guidance in our activities. This information will not be published or accessible except by the CSMS Board of Directors.
MAILING <input type="checkbox"/>	LOCAL SHOWS <input type="checkbox"/>	YOUTH ACTIVITIES <input type="checkbox"/>	
PROGRAMS <input type="checkbox"/>	FIELD TRIPS <input type="checkbox"/>	REFRESHMENTS <input type="checkbox"/>	
HOSPITALITY <input type="checkbox"/>	WEB SITE <input type="checkbox"/>	LIBRARY <input type="checkbox"/>	
List any other things you may be willing to do.			

I hereby agree to abide by the Constitution and By-Laws of the Colorado Springs Mineralogical Society.  
CSMS Constitution and By-Laws are available at our web site, [www.CSMS.us](http://www.CSMS.us).

Signature of Primary Applicant

Mail this form and your payment to:

Colorado Springs Mineralogical Society  
PO Box 2  
Colorado Springs, CO 80901

Application Date

BILL & BETTY CAIN, EDITORS



PICK&PACK  
P.O. Box 2  
COLORADO SPRINGS, CO 80901-0002

Non-Profit Org.  
U.S. Postage  
PAID  
Colo. Sprgs., CO  
Permit No. 66

## Joining the Colorado Springs Mineralogical Society (CSMS)

General Assembly meetings are the third (3rd) Thursday of each month, except August, beginning at 7:30 p.m. at the Colorado Springs Senior Center, 1514 North Hancock Blvd., Colorado Springs, CO. **Visitor are always welcome.**

CSMS also offers Satellite Group meetings that allow more focused attention in specific areas of our members' interests. Our current Satellite Groups consist of the following: Camera Club, Crystal Study Group, Faceting Group, Fossil Study Group, Jewelry Group, Lapidary Group, Micromounts Group, and Pebble Pups. For details of Satellite Group meetings, see page 9.

Yearly dues include 10 issues of the **PICK&PACK**, all field trips (additional fees may be required on some field trips, and members are responsible for all transportation to and from), participation in all Satellite Groups (some groups may request additional fees to help cover resource costs), free admission to the *Western Museum of Mining & Industry*, a year of learning and enjoyment, plus a lifetime of memories.

Individuals—\$15 (paid by 1/31)      Family—\$25 (paid by 1/31)      Juniors—\$2

If you are interested in joining CSMS or would like more information, we encourage you to attend our next General Assembly meeting (see page 2 for details of the next meeting) or visit our web site: [www.csms.us](http://www.csms.us).