



THE BULLETIN OF THE COLORADO SPRINGS MINERALOGICAL SOCIETY Published Since 1960

June
2013
PICK&PACK
Volume 53 Number 05

CSMS is an incorporated non-profit organization with these goals:

- To promote and disseminate knowledge of the earth sciences, especially as they relate to mineralogy, lapidary, and fossils.
- To encourage study, collection, and fashioning of minerals.
- To accomplish the same through social meetings, lectures, programs, displays, shows, and field trips.
- The Pick & Pack is published 10 times each year to assist and promote the above.

Proud Members of:

American Federation of Mineralogical Societies (AFMS)
www.amfed.org

Rocky Mountain Federation of Mineralogical Societies (RMFMS)
www.rmfmms.org

Colorado Federation of Gem & Mineral Societies (CFGMS)

**Colorado Springs
Mineralogical Society**
Founded in 1936

Articles in this Issue:

CSMS Calendar	Pg 2
Mammalian Body Size Changes Paleocene	Pg 3
	Pg 6
Pebble Pups Corner	Pg 8
	Pg 7
President's Corner	Pg 9
Secretaries Corner	Pg 10
Classified	Pg 11

Treats for June to be provided by the Lapidary Group

**The CSMS Pikes Peak Gem & Mineral Show
& Rock Fair**

**June 7-9 9AM – 5PM Fri. & Sat.,
9AM – 4PM Sun.**

Celebrating the 40th Anniversary of the Canon City Meteorite
Impact Event

Special exhibit of roof section

Meteor specimen from 1973

Canon City Meteor Impact

Exhibits with Specimens from the Guffey and
Johnstown, CO events

**And a Specimen from the recent
Russian meteorite event**

CSMS General Meeting

Thurs. June 20, 2013 7PM

Fracking: Fact and Opinion

Fracking is often a divisive topic. This difficulty is aggravated by drawing conclusions based on non-facts and unsubstantiated opinions (*cf.*, media reports). Mark Martin, a chemical engineer with over 31 years' experience in the worldwide oil and gas industry, will teach us about the science of fracking. Mr. Martin recently served on the Colorado Springs Oil and Gas Committee, an investigative committee tasked with researching city regulations for oil and gas development within the city limits. Mr. Martin has a B.S. Ch.E. from the University of California, Davis..

CSMS Calendar

June 2013

Sat., Jun 1—Lapidary, 10-2 p.m., Sharon Holte 217.5683.

Tue., Jun 4—Fossil Group, 7 p.m., Senior Center.

Thu., Jun 6—Board Meeting, 7 p.m., Senior Center.

Tue., Jun 11—Micromounts, 7 p.m., Senior Center. Dave Olsen, 719.495.8720

Thu., Jun 20—General Assembly, Fracking Fact & Opinion, 7 p.m., Senior Center.

Pebble Pups & Juniors. Meetings resume in Sep, Steven Veatch, 719.748.5010

Thu., Jun 27—Crystal Group, Meetings Resume in September, Kevin Witte, 719 638-7919

Faceting Group, 7 p.m., Senior Center. Paul Berry, 719.578.5466

Jun, Jewelry Group, By appointment. Call, Bill Arnson, 719.337.8070. 15610 Alta Plaza Cir., Peyton

July 2013

Tue., Jul 2—Fossil Group, 7 p.m., Senior Center.

Thu., Jul 4—Board Meeting, 7 p.m., Senior Center.

Sat., Jul 6—Lapidary, 10-2 p.m., Sharon Holte 217.5683.

Tue., Jul 9—Micromounts, 7 p.m., Senior Center. Dave Olsen, 719.495.8720

Thu., Jul 18—General Assembly, Program TBD 7 p.m., Senior Center.

Pebble Pups & Juniors. Meetings resume Sep, Steven Veatch, 719.748.5010

Thu., Jul 25—Crystal Group, Program TBD 7 p.m., Senior Center. Kevin Witte, 719 638-7919

Faceting Group, 7 p.m., Senior Center. Paul Berry, 719.578.5466

Jul, Jewelry Group, By appointment. Call, Bill Arnson, 719.337.8070. 15610 Alta Plaza Cir., Peyton

Jul—Lapidary—By appointment. Call Sharon Holte 217.5683

Other Events of Interest to CSMS Members

June 1-4, 19th Annual Tate Summer Conference and 68th Annual Wyoming Geological Association Field Conference, **Cretaceous Conference: Evolution & Revolution**; Paleontology ~ Geology ~ Engineering. Casper College : Casper, Wyoming see <http://www.caspercollege.edu/tate/conference/> for more information.

June 7-9, Pikes Peak Gem and Mineral Show and Rock Fair, sponsored by Colorado Springs Mineralogical Society and held at the Western Museum of Mining and Industry. Theme: "Meteorites and the 40th Anniversary of the Canon City Meteor".

June 13, Canon City Geology Club Meeting featuring Dr. Jim Puckette "OSU summer field camp - the Properties of the Oil and Gas Producing Woodford Shale." Bureau of Land Management, 3028 East Main Street, Canon City, Behind Big O Tires on the frontage road. (719-275-9781 for more information)

June 20, Western Museum of Mining & Industry Lecture, Gold King of Colorado and His Charitable Legacy: The Myron Stratton Home, 5:30 Exhibit Opening, 7:00 Lecture. The Myron Stratton Home opened in 1913 and has operated continuously since, serving the economically disadvantaged for 100 years! The opening and lecture are free, but reservations are necessary by calling 719-488-0880 or email at rsvp@wmmi.org. The exhibit runs through August 15, 2013.

June 22-23, 1st Annual Victor, Colorado Gem and Mineral Show, "in historic downtown Victor".

June 28-30, Colorado State Annual Gold Panning Championships, Downtown Cripple Creek, north side of Bennett Ave. between 3rd & 4th, 9AM-5PM, sponsored by Gold Prospectors of Colorado.

June 29, Western Museum of Mining & Industry: History of the Steam Excavator & Operation of the Osgood Steam Shovel! Saturday, June 29, 10 am & 1 pm Our 1928 Osgood Steam Shovel will rumble alive, and its shrill whistle will pierce the air. Afterward, historian Anna Lee Frohlich will tell the riveting story of her family and you guessed it--one of Anna's relatives invented the first steam excavator.

July 18-21, Looking at Plants of the Past: A Tour Through Geological Time, 9AM-9PM, A Seminar on Petrified Wood, Colorado School of Mines, Museum Conference Room, All day field trip on Sunday. For more info contact, Beth Simmons cloverknoll@comcast.com, 303-986-9693.

The Senior Center is located at 1514 North Hancock in Colorado Springs. For more information on any of the sub-groups, meetings, and other CSMS valuable information, go to our website, csms.us

Mammalian Body Size Change during the Paleocene-Eocene Thermal Maximum in the Powder River Basin, Wyoming

Deborah Wagner
Graduate Student, University of Colorado

In 2011 Mike Nelson from the Colorado Springs Mineralogical Society received the RMFMS American Federation of Mineralogical Societies Scholarship Foundation Honorary Award. He presented one of the included \$4000 scholarships to Deb Wagner, a graduate student at the University of Colorado working on her Master of Science Degree. The following is her report of fieldwork. The Paleocene-Eocene Thermal Maximum (PETM) represents a rapid global warming at the Paleocene-Eocene (PE)

boundary. Research by others in Wyoming's Bighorn Basin has demonstrated that certain mammalian taxa experienced a decrease in body size during the height of the PETM. To date, this phenomenon has not yet been documented in North American PE boundary-spanning mammalian faunas outside of the Bighorn Basin.



Powder River Basin
Photo by Eberle - May 2011

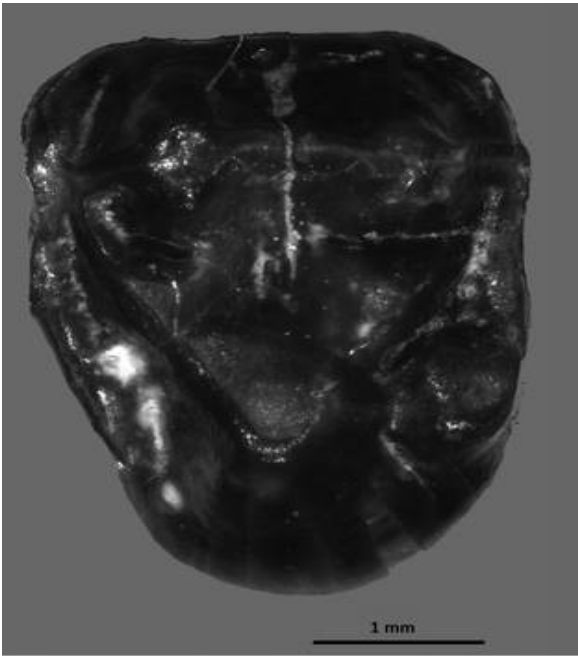


Collection from Harvester Anthill - Wagner and Robinson
Photo by Eberle - May 2011

East of the Bighorn Basin in Johnson County, Wyoming, strata of the 'Wasatch' formation in the Powder River Basin contain one of the more complete terrestrial records of the PETM in North America, with mammalian faunas spanning latest Paleocene (late Clarkforkian Land Mammal Age) through earliest Eocene (early Wasatchian Land Mammal Age) time. Under the leadership of Dr. Peter Robinson, the University Of Colorado Museum Of Natural History (CU Museum) has collected in the Powder River Basin for over 30 years. New research from localities spanning the PETM allows us to test whether the dwarfing of mammalian taxa observed by other researchers in the Bighorn Basin occurs in the Powder River Basin (and is therefore a more regional pattern).

CU Museum's material consists primarily of isolated teeth, collected from the surface of anthills of the harvester ant *Pogonomyrmex occidentalis* (Robinson and Kron, 1998). In May 2011, my graduate advisor, Jaelyn Eberle, her son Nick, and I joined Peter Robinson to collect additional material for my master's thesis. In addition to collection, I had the opportunity to gain a better understanding of the stratigraphy of the basin and behavior of the harvester ants that are doing

most of the work for us. *P. occidentalis* can carry fossil material from as low as 3 meters below ground surface (McCook, 1882) and as far as 15 meters on the surface (Robinson and Kron, 1998). Because the original collection source can be so variable, careful consideration must be taken into account when selecting which hill to be sampled in order to not get cross sampling over faunal zones (Robinson and Kron, 1998). After sediment is collected and brought back to the CU Museum, it is



Hyopsodus Upper Molar
Photo by Wagner

screen washed, dried, and the microfossils are picked and identified.

The tooth crown area was measured for several taxa included by others in the Bighorn Basin studies (e.g., the 'condylarths' *Apheliscus* and *Hyopsodus*). Most specimens are less than 5mm in length and width; therefore measurements are taken through a microscope using digital software. Using tooth crown area as a proxy for body size, I am looking for patterns of body size change during the PETM. Preliminary results suggest that dwarfing occurred in the Powder River Basin during the early Wasatchian interval, similar to what others noted for the similar taxa in the Bighorn Basin. The recovery of additional teeth and further analysis of fossils from the Powder River Basin is critical to testing whether body size changes in mammalian taxa during the PETM extend beyond the boundaries of the Bighorn Basin. From a larger perspective, studies such as this should provide insight into the impacts of current and future global warming on today's mammalian fauna.

Through a portion of the funding I received from the American Federation of Mineralogical Societies Scholarship Foundation, I was able to lead a workshop centered on the Powder River Basin for local fossil enthusiasts. After a brief introduction, we focused on sorting matrix, identifying and curating specimens. It was a wonderful and fulfilling opportunity as I feel public outreach is important. In addition to science education, there is a need for a better understanding of the role of museums and their collections. Through this workshop, I provided participants the opportunity to build their knowledge and skill set of vertebrate paleontology and gained several volunteers who I continue to work with.

REFERENCES

- McCook, H. C., 1882. The Occident Ants of the American Plains. pp. 121-188. The Honey Ants of the Garden of the Gods, and the Occident Ants of the American Plains. J. B. Lippincott & Co., Philadelphia, PA.
- Robinson, P., and D. G. Kron. 1997. *Koniartctes*, a New Genus of Apternodontid Insectivore from Lower Eocene Rocks of the Powder River Basin, Wyoming. *Contributions to Geology* 31(2): 59-78.

PEBBLE PUPS CORNER



Pebble Pups in the News

Luke Sattler had two articles published in the Ute Country News. "Park County tax sale lots yield a treasure trove of chalcedony, petrified wood, and other specimens" appeared in the Dec 2012 edition and "New discovery of Ute artifacts in El Paso County" was published in the Feb 2013 edition. In addition, Luke's article "A preliminary study on a large scraper from central Wyoming" was recently published in a British journal on the earth sciences

Gavin Noller's article entitled "A Ute arrow straightener is made of Jurassic dinosaur bone", was published in the Nov 2012 Ute Country News,

Continued pg 7

Fun with Geology

By: Ciena Higginbotham

Geology is very fun
So much to explore
Digging, searching, all day long
Crystals, gems and more
Geology is very fun
So much to uncover
Topaz, pyrite, quartz, and gold
Look, I found another!
Geology is very fun
So much to survey
Where should we go searching next?
Let's go! Come this way!

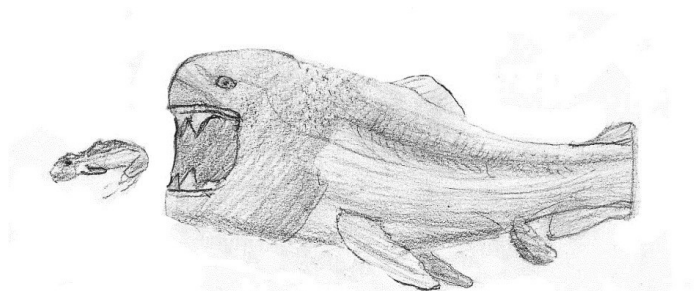


About the author:

Ciena Higginbotham is 15 years old and a 9th grade homeschooler and lives in the beautiful Rocky Mountains in Colorado. She's always had a fascination with geology and has been collecting rocks since she can remember. Ciena has attended the Lake George Gem and Mineral Club Pebble Pups since 2010.

Bio of author:

Teddy Reeves is 12 years old in 7th grade and goes to Immanuel Lutheran School in Colorado. He now has been collecting fossils for half his life. Fossil collecting is one of his favorite hobbies. Other hobbies include basketball, piano, and acting. Teddy is a CSMS distance student in the Earth Science Scholar program. He has been participating in the distance program through the Internet for three years. Teddy's poem is in press and will be published by *Deposits* magazine, an international publication on fossils, rock, and minerals this year.



The Age of Fishes

By Teddy Reeves

Colorado Springs Mineralogical Society

In the age of fishes
The period was blazing,
The cooling plants were few,
The creatures were amazing.

On the land above
The air was thinner than today,
The mammals were none—
Much to my dismay.

The biggest underwater
Could not be beat,
Larger than three elephants,
Length: more than thirty feet!

The greatest jaws of old,
A mouth that could crush steel.
Delicacies of bone
Made for a great meal.

Dunkleosteus

If you had come upon one,
You should've started a will,
For your time left was none.



Pebble Pups Recognized at the Student Literary Awards

By Julie Shimon, Pikes Peak Pebble Pups Assistant

On May 16 two Pebble Pups, Caden Rothzeid and Jack Shimon, both in 2nd grade, were invited to attend the Student Literary Awards hosted by Colorado Humanities as finalists in the River of Words poetry contest. Unlike all the other finalists who entered the contests through their schools, Caden and Jack have to thank their Pebble Pups teacher Steven Veatch for not only bringing ROW to their attention, but more importantly for inspiring their creativity through his club. The reception was held at the Denver Public Library and honored poetry and art finalists from ROW as well as Letters for Literature.



(All the finalists in attendance)

The reception began with an introduction by Maggie Coval, Director of Colorado Humanities, who was thrilled to “honor the finest student writing and art” out of hundreds of entries within Colorado alone. She said this year had some of the “most beautiful and memorable entries”, and after attending the reception and listening to 1st place finalists read their work I have to agree.

The River of Words judges for Colorado were Jim Chelety, a master poet, and Justice Gregory Hobbs of the Colorado Supreme Court, who has been judging this contest for twelve years. Justice Hobbs was in attendance and hosted the poetry awards. The finalists in each category were called forward to receive an anthology of the work and then the 1st place winners read their poetry. Caden did an amazing job reading his 1st place poem in Category 1(K-2nd grade) called The Volcano Poem. He even got some giggles at the end with his final line “I love to learn about them, I don’t think they are a bore.” Jack took second place in this category with his poem The Waldo Canyon Fire.

At the conclusion of the State Poetry Awards Jack was called forward to read his poem which was also a National Finalist. The State and National awards are judged independently by a completely different panel of Judges. This was a big honor for Jack. At the end of the awards presentation all the winners and families were invited to enjoy a nice reception and each winner received a cool Certificate and Gift Bag.



1st Place winner Category 1, Caden Rothzeid



2nd place winner Category 1 and National Finalist, Jack Shimon



Pebble Pups in the News Continued

Chris Retzlaf's article "The trace fossils of Redhill Ridge's Dakota Sandstone" was recently published in a British journal on the earth sciences.

Teddy Reeves article "Preliminary report on a fossil bone from the Jurassic" was published in the April 2013 Ute County News.

Zach Sepulveda appeared in the Oct 2012 Rock & Gem Magazine. He wrote an article entitled "Becoming a Paleontologist." He also had an article entitled "Twilight of the Mammoths" published in the Ute County News.

Victor Gordillio's article "One bad day at the end of the Cretaceous: The death of the Dinosaurs" was published in the May 2013 Ute County News.

There will be a Pebble Pup/Earth Science Scholar poetry chapbook that will be released at the RMFMS meeting in Utah later this month at the editor's breakfast.

Canon City Geology Club Field Trip to Picketwire Canyonlands CSMS Members invited to join

The Canon City Geology Club is planning a field trip to Picketwire Canyons on **Saturday, September 21st, 2013.**

Located on the Comanche National Grassland south of La Junta, Colorado, these primitive canyons are home to the largest dinosaur tracksite in North America! Over 1400 prints in 100 separate trackways extend across a quarter mile expanse of bedrock.

We are planning a guided auto tour, as this is the easiest way to experience Picketwire Canyonlands and learn about its rich, colorful past. During the tour, knowledgeable guides will show us difficult to find dinosaur tracks, and the interesting prehistoric, historic, and natural features of the canyons. This auto tour is the only motorized access into the canyons.

You can read about the Picketwire Canyonlands here:

<http://www.recreation.gov/tourParkDetail.do?contractCode=NRSO&parkId=74974>

Here you will be able to see a really nice brochure:

http://www.fs.usda.gov/Internet/FSE_DOCUMENTS/stelprdb5409587.pdf

Each person makes their own reservation. You can book your tour on:

<http://www.recreation.gov/tourDetails.do?contractCode=NRSO&parkId=74974&tourId=341568&cat=1>

or by calling 1-877-444-6777

-When making a reservation by phone, the tour is listed under "Picketwire Canyonlands Auto Tour".

-when making a reservation by internet: if you have to create an account before booking, make sure you do not put in our "organization details"; just leave that space blank.

We strongly recommend making your reservation soon, as this is a very popular spot. The daily limit is 45 people. **Please make sure you read the small print.**

Adult tickets: \$15, children 6 - 12: \$7.50, Golden Age pass holders: \$7.50

Max. 45 person per trip. It Starts at 8am and lasts 8 hours!

Cancellation and change policy: \$3 per ticket if cancelled within 10 days of the trip.

You must provide your own four-wheel drive, high clearance vehicle (e.g., truck or SUVs only. All wheeled drive vehicles, ATVs and UTVs are NOT allowed) to participate in the tour.

This tour lasts eight hours. You must provide your own lunch, water, snacks, hat, sunscreen, water shoes, full tank of gas and good spare tire.

Holders of the Interagency Senior and Access Passes (and the Golden Age and Access Passes) may receive a 50% discount on the purchase price of a ticket.

The ticket reservation must be in the name of the pass holder to receive a discount and the discount only applies to the ticket issued to the pass holder.

Contact Cindy Smith 303-818-3084 when you have made the reservation so they will know how many will be attending or if you have any questions.

2013 CSMS Officers

Mark Lemesany, President

Jean Miller, Vice President

Renee Swanson, Secretary

Ann Proctor, Treasurer

Ellie Rosenberg, Editor

Susan Freeman, Membership Secretary

Sharon Holte, Member-at-Large

Frank Rosenberg, Member-at-Large

Roger Pittman, Past President

2013 CSMS Chair Persons

Kim & Bodie Packham, Annual Show Chairperson

Ron Yamiolkoski, Field Trip Director

Ron Yamiolkoski, Science Fair Chair

Brenda Hawley, Historian

Frank & Ellie Rosenberg, Librarians

Camera Club Chair is Vacant

Georgia Woodworth, Social Committee Chair

Ann Proctor, Store Keeper

Kevin Witte, Crystal Studies Group

Paul Berry, Faceting Group

TBD, Fossil Group

Bill Arnson, Jewelry Group

Sharon Holte, Lapidary Group

Steven Veatch, Juniors & Pebble Pups

Dave Olsen, Micromount Group

Gary del Valle, Webmaster

To contact an officer or chairperson, go to csms.us, click on Board Members, and, if their name is underlined, click on it.

SECRETARY' SPOT

by Renee Swanson

MINUTES OF COLORADO SPRINGS MINERALOGICAL SOCIETY GENERAL MEETING MAY 16, 2013

Bought to order by President Mark Lemesany at 7:05 p.m. The presentation for the meeting was by Jack Morris, owner/operator of the Last Chance Mine of Creede, CO. Jack had a wonderful story to tell about his journey to become the joyful owner of the mine and his quest to add joy to as many lives as possible with a trip to the Last Chance Mine. He has cabins, grills, tours and lots of surface picking, a part of the charm of this place deep in the Colorado mountains. As a bonus, Jack was chosen to be in the new Johnny Depp movie about the Lone Ranger, which will come out in July this year.

The Creede rock show is Aug 3-4.

A break for goodies was called, with Georgia, our new social chairman in charge. Thanks for volunteering and taking on this important role.

Guests and new members introduced themselves. We are happy to continue to have such high interest in our group.

April minutes seconded and approved.

Respectfully submitted Renee Swanson

PRESIDENT'S CORNER

by Mark Lemesany



Hello everyone,

This month is a very busy one for us. It's Showtime. If you didn't get to a pre show meeting and still want to be part of a fun time just show up and we will find something that needs to be done. Maybe someone needs a break, so just a little time is also appreciated. The silent auction will be up and going. We still need donations.

You can bring those to the show anytime you come. It looks like the show is going to be good one.

I'm also excited to see how this collecting season will go. After we get the show taken care of, it's time to start going out and playing. Playing in the dirt. If you can't make it to a field trip date and still would like to go collecting, I might be able to help. I like to go dig a lot. I often go at a moments notice. If you want to go sometime, just let me know and I will try to include you on a trip I go on.

Thank you,

Mark Lemesany

Sub-Group Responsibilities for Refreshments for General Assembly Meetings

Feb. Crystal	Mar. Faceting	Apr. Fossil
May Jewelry	June Lapidary	July Micromount
Aug. Picnic	Sept. Projects	Oct. Board
Nov. TBD	Dec. Christmas Party	

PICK&PACK

Our Staff...

Ellie Rosenberg—Editor
CSMS Members Reporters

We encourage everyone to submit articles, photos, illustrations or observations.

Share your experiences, trials and tribulations, your new finds, or simply your experience at our last field trip.

The ability to write well is NOT a requirement. We will fix the grammar while keeping the author's voice, style, and work intact.

Handwrite it, type it, or email it. Format does not matter. All submissions are welcomed. DEADLINE for items to be included is the **21st of the month**

To submit an item, please use the following:

For hardcopy photos or articles, mail to the address below or bring them to the General Assembly Meeting. All hardcopy photos remain the property of the submitter and will be returned. Electronic photos should be submitted at resolutions above 200 dpi in TIF, BMP, JPG, or PIC format. Articles are preferred in word. Editors will correct font and type. All articles not shown with an author are provided by the Editor.

E-Mail to:

csmseditor@hotmail.com

Mail to:


Pick & Pack Editor

PO Box 2

Colorado Springs, CO 80901

The PICK&PACK is published at least ten (10) times per year; 350-375 copies e-mailed/mailed per month (no issues in January or August). Unless otherwise marked, materials from this publication may be reprinted. Please give credit to the author and CSMS PICK&PACK.

Classifieds

June 22-23, 2013
FIRST ANNUAL
VICTOR GEM

MINERAL SHOW
Gem & Mineral Vendors
Join Us In
Historic Victor, Colorado
Pre-register by April 1: \$20 per 10x15 space
Register at VictorColorado.com
Register Early for the Best Space!

CSMS
T-Shirts, Badges, and Pins
are available for sale.
See Storekeeper, Ann Proctor

ACKLEY'S ROCKS
Cathy / David / Shawna
Owners / CDM Rocks LLC
Services: Lapidary, Silversmithing,
Goldsmithing, and Jewelry Repairs
**3230 Stone Ave. Colorado Springs,
CO 80907 719-633-1153**
ackleysrocks@comcast.net
Hours: 9 to 5, every day but Sunday.

Sangre de Cristo
Gallery & Rockshop

Steve & Peggy Wilman
114 Main Street, Westcliffe, Colorado 81252
(719) 783-9459 gallery@ris.net

COLORADO STATE ANNUAL GOLD PANNING CHAMPIONSHIPS

DOWNTOWN CRIPPLE CREEK
NORTH SIDE OF BENNETT AVE
BETWEEN 3RD AND 4TH ST.
JUNE 28-29-30
9-5 ALL 3 DAYS

DAILY COMPETITIONS INCLUDE:

HAVE FUN LEARNING TO PAN FOR
GOLD AND GEM STONES

(FREE)

OLD TIMERS
NATIONAL STYLE
TEAM
WOMEN
JUNIORS
MEN
COLORADO STATE
WORLD'S DRY

**SPONSORED BY:
GOLD PROSPECTORS
OF COLORADO**

Hurry! Hurry!! Hurry!!
Have You Picked Up Your
Membership Award Pin(s)?
If you celebrated a CSMS anniversary
in 2011 or 2012, your year pin award
is available from the
Storekeeper, Ann Proctor

2013 Lake George
SHOW
GEM AND MINERAL SHOW
FRIDAY, SATURDAY, & SUNDAY
Dates TBD


Gems • Minerals • Jewelry
Crystal Skulls
Wands • Violet Flame
By Appt. Only
719-531-7203
Joe & Marylee Swanson Colorado Springs, CO
Krystals@webtv.net



PICK&PACK
P.O. Box 2
COLORADO SPRINGS, CO 80901-0002

Postage Here

Time Value
Do Not
Delay



Joining the Colorado Springs Mineralogical Society (CSMS)

General Assembly meetings are held the **third (3rd) Thursday of each month**, except January & August, (picnic) **beginning at 7:00 p.m.** at the Colorado Springs Senior Center, 1514 North Hancock Ave., Colorado Springs, CO. **Visitors are always welcome.**

CSMS also offers Satellite Group meetings that allow more focused attention in specific areas of our members' interests. Our current Satellite Groups consist of the following: Crystal Study Group, Faceting Group, Fossil Group, Jewelry Group by RVSP, Lapidary Group by RVSP, Micromounts Group, and Pebble Pups/Juniors. For details on Satellite Group meetings, check out the calendars on page 2 and the web site.

Yearly dues include 10 issues of the *PICK&PACK*, all field trips (additional fees may be required on some field trips, and members are responsible for all transportation to and from), participation in all Satellite Groups (some groups may request additional fees to help cover resource costs), free admission to the *Western Museum of Mining & Industry*, a year of learning and enjoyment, plus a lifetime of memories.

Individuals—\$30, Family—\$40, Juniors—\$15, Corporate—\$100, *****Application is on the web site.

If you are interested in joining CSMS or would like more information, we encourage you to attend our next General Assembly meeting or visit our web site: www.csms.us.