

PICK&PACK

THE BULLETIN OF THE COLORADO SPRINGS MINERALOGICAL SOCIETY Published Since 1960

April
2012
PICK&PACK

Volume 52 Number 03

2012—April General Meeting :

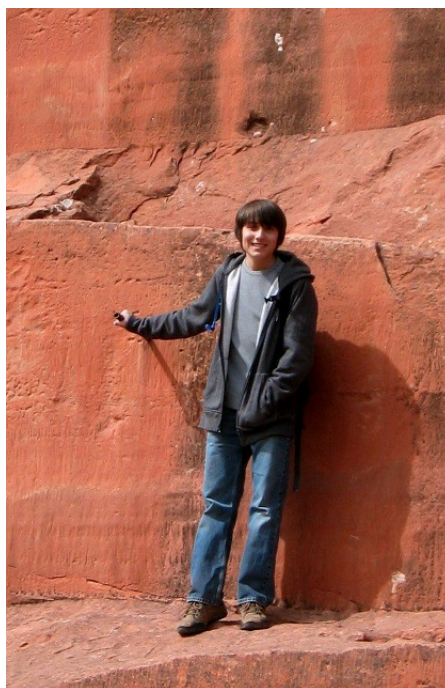
By Marty Zinn

will be the speaker at the Apr 19 CSMS General Meeting. Marty is the founder of Martin Zinn Enterprises, a corporation that organizes and manages several big Mineral Shows every year. The Denver Mineral and Fossil Expo and several shows during the big Tucson Show come under his company's umbrella. He will be talking about "Where are all the Good Mineral Specimens Going." Because of his worldwide connections he has access too many of today's big specimen mines and to many exceptional collectors. He will be showing pictures of exceptional world class mineral specimens. This is your

Extinction

By Zachary Sepulveda

As one dies another entity emerges;
new and young and strong.
It struggles at first, then comes into its
own—
peerless to all around.
It lives and thrives, longs and strives
to be the best that it can be.
All of its potential, bursting at the seams—
it's finally reached its peak, hopes soaring to
the sky.
Little does it know, it too will die.
Something else arises.
Something bigger, faster, stronger,
better than our thing could ever be;
our entity's life and vigor, slowly receding,
gradually outcompeted, vying for its title:
But always bested.
It screams unto the heavens,
"Why, why must it be I who goes?"
And the heavens reply,
"You have had your time;
you must go extinct for others to survive."



Continued on Pg 8....

Hey!! I just checked out the web
-site. There are 9 field trips listed.

CSMS MAKES OVER \$500 FOR THE SUBGROUPS

By Frank Rosenberg

March 24th CSMS held its silent auction at the Western Museum Of Mining and Industry. Under the lead of Ellie Rosenberg, the auction took in over \$500 to be used for the club's subgroups. Yam put his epicurean talents to work by dishing up hot dogs and sauerkraut throughout the day. Thanks goes out to all those who donated their specimens to the auction and those who helped set up and run what turned out to be a good time for all. (See pictures inter-spaced on following pages where space was available.)

CSMS is an incorporated nonprofit organization with these goals:

- To promote and disseminate knowledge of the earth sciences, especially as they relate to mineralogy, lapidary, and fossils.
- To encourage study, collection, and fashioning of minerals.
- To accomplish the same through social meetings, lectures, programs, displays, shows, and field trips.
- The Pick & Pack is published 10 times each year to assist and promote the above.

Proud Members of:

American Federation of Mineralogical Societies (AFMS)

www.amfed.org

Rocky Mountain Federation of Mineralogical Societies (RMFMS)

www.rmfmts.org

Colorado Federation of Gem & Mineral Societies (CFGMS)

Articles in this Issue:

Extinction	Pg 1
Calendars—April—May	Pg 2
Fossils fm Ancient Lake	Pg 3
Science Olympiad	Pg 4
Collecting on BLM	Pg 5
SECRETARY'S SPOT	Pg 6
PRESIDENT'S CORNER	Pg 7
RAY BERRY'S CRYSTAL	Pg 9
UPTOP	Pg 10
Poem—Gold Rush	Pg 10
June Pebble Pups	Pg 11
Field Trip	
Request for Non- competitive case	Pg 14

April 2012 CSMS Calendar

<p>Tue., Apr 3—Fossil Group,</p> <p>7 p.m., Senior Center.</p> <p>Nelson, Leader, csrock-guy@yahoo.com</p>	<p>Tues., Apr 10—Micromounts,</p> <p>7 p.m., Senior Center.</p> <p>Dave Olsen, Leader, 719.495.8720</p>
<p>Thurs., Apr 12—Board Meeting,</p> <p>7 p.m., Senior Center.</p>	<p>Thurs., Apr 19—General Assembly, Marty Zinn – <i>Where Have All The Minerals Gone</i></p> <p>7 p.m., Senior Center.</p> <p>6:30 p.m. to 7:15 p.m. Pebble Pups & Juniors. Steven Veatch, Leader, 719.748.5010</p>
<p>Fri-Sun, Apr 20-22—COLORADO MINERAL & FOSSIL SHOW-SPRING</p> <p>Ramada Plaza Denver Central (formerly Holiday Inn)</p> <p>4849 Bannock St. (Retail and Wholesale)</p> <p>Friday & Saturday, 10 a.m. – 6 p.m., Sunday, 10 a.m. to 5 p.m.</p>	<p>Thurs., Apr 26—Crystal Group,</p> <p>7 p.m., Senior Center.</p> <p>Kerry Burroughs – Minerals of Gold Hill Troels City, Utah</p> <p>Kerry Burroughs, Leader, 719.210-6389</p> <p>Faceting Group, 7 p.m., Senior Center. Paul Berry, Leader, 719.578.5466</p>
<p>Sat., Apr—Lapidary—By appointment. If you would like to cut stones, call Sharon Holte at 217.5683 for an appointment.</p>	<p>Apr., Jewelry Group, By appointment only. Please call, Bill Arnsen, Leader, 719.749.2328 to schedule a mutually agreeable time.</p> <p>15610 Alta Plaza Cir., Peyton.</p>
<p>Project Group—TBD—contact Ron “Yam” Yamiolkoski, yamofthewest@gmail.com</p>	<p>Camera Club is looking for a leader and meeting place, date and time. Interested? Contact Roger Pittman.</p>
<p><i>For more information on any of the sub-groups, meetings, and other CSMS valuable information, go to our website, csms.us</i></p>	<p>The Senior Center is located at 1514 North Hancock in Colorado Springs.</p>
<p>The Senior Center is located at 1514 North Hancock in Colorado Springs.</p>	

May 2012 CSMS Calendar

<p>Tue., May 1—Fossil Group,</p> <p>7 p.m., Senior Center.</p> <p>Nelson, Leader, csrock-guy@yahoo.com</p>	<p>Thurs., May 3—Board Meeting,</p> <p>7 p.m., Senior Center.</p>
<p>Sat-Sun, May 5-6—Ray Berry Mineral Sale—7513 Tudor Rd CS, CO.</p>	<p>Sat, May 5—Field Trip, Fountain Creek, See Web site for details</p> <p>Dave Olsen, Leader, 719.495.8720</p>
<p>Tues., May 8—Micromounts,</p> <p>7 p.m., Senior Center.</p> <p>Dave Olsen, Leader, 719.495.8720</p>	<p>Sat–Sun, May 12-13—Field Trip, Hondo Canyon, See Web site for details</p>
<p>Thurs., May 17—General Assembly, Martin Guth– Fluorescent Minerals The Reason Why</p> <p>7 p.m., Senior Center.</p> <p>6:30 p.m. to 7:15 p.m. Pebble Pups & Juniors. Steven Veatch, Leader, 719.748.5010</p>	<p>Thurs., May 24—Crystal Group,</p> <p>7 p.m., Senior Center.</p> <p>– Program TBD, Kerry Burroughs, Leader, 719.210-6389</p> <p>Faceting Group, 7 p.m., Senior Center. Paul Berry, Leader, 719.578.5466</p>
<p>Sat., May—Lapidary—By appointment. If you would like to cut stones, call Sharon Holte at 217.5683 for an appointment.</p>	<p>May, Jewelry Group, By appointment only. Please call, Bill Arnsen, Leader, 719.749.2328 to schedule a mutually agreeable time.</p> <p>15610 Alta Plaza Cir., Peyton.</p>
<p>Project Group—TBD—contact Ron “Yam” Yamiolkoski, yamofthewest@gmail.com</p>	<p>Camera Club is looking for a leader and meeting place, date and time. Interested? Contact Roger Pittman.</p>
<p><i>For more information on any of the sub-groups, meetings, and other CSMS valuable information, go to our website, csms.us</i></p>	<p>The Senior Center is located at 1514 North Hancock in Colorado Springs.</p>



Fossils from the Ancient Lake

By Steven Wade Veatch

As the sun goes down an evening glow spreads through the woodlands,
while the faint gibbous moon climbs so slowly in the sky.

The soporific shadows slowly stretch and shade the sylvan glade by the lake.

Little red flowers are in bloom just above the green grass; in this palmary Eocene day.
A gentle breeze blows—sending living things into the lake, where they slowly form as fossils over time.

The understanding of this prehistoric time—held secret over the millennia—will be through
the plants, insects, and other animals that settled to the bottom of the lake, then held in shales,
and over time formed fossils: the gems of paleontology—records created in stone;
contributing accounts of primeval climates, prehistoric ecosystems, and ancient plants and animals.

One day the forest will vanish, the trail followed by animals along the lake shore will disappear;
and then the lake is gone forever, but the fossils are safely in the ground, keeping their secrets.
In our present day a scientist and his polymathic student excavate a small area in the ancient lake
and while unearthing the overburden at the site they discover in the shales delicate fossils.
Together they share the passion of discovery and will contribute much to the oeuvre science.



The End

Artist's rendition of the prehistoric lake and sylvan scene. Watercolor © March 2012, by Steven Veatch, artist.



Silent Auction Fun

PEBBLE PUP LEADERS PARTICIPATE IN THE SOUTHERN COLORADO SCIENCE OLYMPIAD

By Steven Wade Veatch

The Colorado Springs Mineralogical Society (CSMS) Pebble Pup leader Steven Veatch and the Lake George Gem and Mineral Club Pebble Pup co-leader Dr. Bob Carnein supervised the geology examinations that were part of the Science Olympiad at the University of Colorado at Colorado Springs on March 3, 2012. The day-long event was held for the southern region of Colorado. The winning teams will go on to compete at the state level. Steven Veatch, and his assistant, a junior member of the CSMS, tested middle school students. Dr. Carnein tested high school students. Each team had to identify and answer several questions about 15 different rock and mineral specimens.



Exploring the World of Science

works very much like a football team—requiring student study, preparation, commitment, coaching and practice throughout the academic year. Each school-based team is allowed to bring 15 students who trained for a variety of events in to competed in.

Science Olympiad competitions are like academic track meets and consist of a series of team events that include: genetics, earth science, chemistry, anatomy, physics, geology, mechanical engineering, and technology.

Division B is middle school and Division C is high school. By combining events from all disciplines, the Science Olympiad encourages a cross-section of students to participate and where they learn the value of working in teams. Teamwork in most science careers is required. The regional tournament at the University of Colorado at Colorado Springs provided a memorable experience for the students to last a lifetime.

The End Zach Sepulveda, a CSMS Junior Member, worked as an assistant and supervisor for the middle school geology testing.



2012 Micromount Group Agendas

- 10 Apr: Distribute & discuss various μ mount resources, including some websites. I will attempt to bring some interesting short videos on my laptop. We will also discuss materials to be placed in the OLD CS museum. As always, we will make time for micro-hunting.
- 08 May: Examine various specimens from our many rock boxes. Nina and I will, if all goes OK, be in Michigan, leaving 30 Apr & returning by 20 May.
- 12 Jun: How-to-micromount presentation & practice session. Field labeling, specimen protection, and specimen ID will also be demonstrated & discussed.
- July: No meeting / Aug: No meeting
- Sep11: Discuss summer treasures, tell “fish stories”, make time for micro-hunting. Discuss a μ mount presentation for one of the CSMS meetings.
- Oct 09: TBD and, as always, make time for micro-hunting among the various specimens from our many rock boxes.
- Nov 13: TBD and, as always, make time for micro-hunting among the various specimens from our many rock boxes. ****Dec: No meeting.

Note: The Editor. S Holte, has moved the construction of the Pick & Pack to her home. This facilitates working on it after hours...i.e. late at night or very early morning. For this reason, she is better able to handle word documents: however, will work with anything sent in, although other forms such as .pdf may not look exactly like original.

Blast-O-Grams: should still be sent to Roni Poteat or the editor at sholte@csu.org. If any question, please call.

COLLECTING ON BLM LANDS

Mike Nelson

csrockguy@yahoo.com; www.csmsgeologypost.blogspot.com

I was born not knowing and have had only a little time to change that here and there. Richard Feynman

The Bureau of Land Management (BLM) is the guardian of a very large parcel of public land in the state of Colorado - perhaps in excess of 8.4 million surface acres and controlling 29 million acres of subsurface mineral rights. The BLM has a state office in Denver and Helen Hankins is the State Director (www.blm.gov/co/st/en.html). The state is then divided into three districts: Front Range District with headquarters in Canon City, the Northwest District headquartered in Grand Junction, and the Southwest District with offices in Montrose. In addition, each of the District Managers is responsible for several field offices (that also have Managers). For example, the Front Range District Office (FRDO) manages most BLM lands in Colorado east of the Continental Divide and has field offices located in Canon City (Royal Gorge), Saguache (San Luis Valley) and Salida (Arkansas Headwaters Recreation Area). Each of the three state Districts have a citizen's advisory committee (~12 members) that meets quarterly (as do most districts located in the western states). I serve on the Front Range Resource Advisory Committee (RAC) and would encourage other interested rock hounds to consider service on these important councils. We recently have studied such diverse items as feral horse populations, the *Over the River Project*®, geothermal leases, shooting ranges, and gold mining. Since I represent the "dispersed recreation community" (things like rock hounding and recreational gold panning), I am always interested in any legislation or rule changes concerning collecting of rocks, minerals and fossils, and proposed changes to land access.

Theoretically, rules for recreational mineral/fossil collecting and gold panning in the western US should be the same for all BLM districts; however, that is often not the case. Therefore, rock hounds and gold panners should consult web resources associated with the many BLM districts and field offices.

Since CSMS members might have opportunities to collect on BLM lands managed by the close-by FRDO, I would like to use this opportunity to further clarify collecting rules. I also want to state that the FRDO has developed a very nice web site with information for rock hounds and gold panners.

The basis for recreational collecting on BLM land (and some other federal agencies) was clarified with passage of Omnibus Public Lands Management Act (OPLA) of 2009, Public Law 111-011. P.L. 111-011, Title VI, Subtitle D on Paleontological Resources Preservation (OPLA-PRP). This act requires the Secretaries of the Interior and Agriculture to manage and protect paleontological resources on Federal land using scientific principles and expertise, and defines the rights of recreational rock hounds. Essentially the law allows collecting of common invertebrate fossils, rocks and minerals on USFS and BLM lands (and some other Federal land), but prohibits commercial collecting of any kind, and also prohibits the collection of vertebrate fossils (without a permit). In the FRDO, "rocks, mineral specimens and semi-precious gemstones, petrified wood, and common invertebrate and plant fossils may be collected on public lands without charge or permit in *reasonable amounts* as long as the specimens are for *personal use*". The two key phrases here are reasonable amounts and personal use.

Reasonable amounts are "defined as small quantities of mineral material and semi-precious gemstones for personal use which would fit into a 5 gallon container. Anything in excess of a 5 gallon container per year would require a permit." But be aware there might be different interpretations when you travel outside of the FRDO. In Arizona, the BLM sets the "reasonable" limits for personal use as up to 25 pounds per day, plus one piece, with a total limit of 250 pounds per year. Personal use means just that. Specimens are for your collection and may not be sold commercially or even bartered to someone selling specimens.

In addition, in the FRDO lands: 1) rock hounds may not collect with "motorized or mechanized equipment including but not limited to: tractors, bulldozers, plows, power-shovels, semi-trailers or other heavy equipment; 2) undue or unnecessary degradation of the public lands is not allowed during the removal of rocks, minerals, gemstones, or fossils;" and 3) rock hounds may not collect on areas with current mining claims (without permission), developed recreation areas (like campgrounds) or other posted areas (such as the Garden Park Fossil Area north of Canon City). I can't overemphasize the importance of understanding land ownership and mining claims. The best way to understand this is to do your homework, especially via the web and published maps, and visit with the friendly BLM personnel in the field offices.

Common plant and invertebrate fossils follow the same rules as minerals in the FRDO—the five gallon rule. However, there are some invertebrate (generally animals without a "backbone") fossils that are scientifically important and are off limits to collectors. For example, the large ammonites in the Pierre Shale near Kremmling (Northwest District) are being conserved and may not be collected—look but don't touch.

Petrified wood has its own specific law concerning collection—Code of Federal Regulation (CFR) 3622; Petrified wood can be collected for personal use—up to 25 pounds each day, plus one piece, but no more than 250 pounds in any calendar year. Individuals may not pool their quotas to obtain pieces larger than 250 pounds---like a large log. Large pieces would require a permit.

The collection of vertebrate fossils, generally animals with a backbone, is prohibited on all federal

Continued—Pg 6

lands without a valid permit. These permits are only awarded to accredited institutions such as museums, and all fossils collected remain the property of the federal government. The museums are simply repositories for the fossils. Vertebrate fossils also include traces of the organisms such as tracks. Included in lands managed by the RGFO is an area termed *The Garden Park Fossil Area*, located about six miles north of Canon City. Here exposures of the Jurassic Morrison Formation have produced a wealth of dinosaur fossils (and also bony fish, crocodilians, turtles, mammals, pterosaurs, lizards, land plants, and frogs). This area is one of the most productive and historically important locations in the United States for the study of Jurassic animals. Fossil hunters and scientists from across the country have dug in Garden Park since 1877. Important discoveries include the first complete skeleton of *Allosaurus*, the three most complete *Stegosaurus* skeletons ever found, as well as the first known remains of dinosaurs like *Camarasaurus*, *Ceratosaurus*, and *Diplodocus* (www.handsontheland.org/garden-park/index.php).

The RGFO BLM has installed a wonderful series of videos //transcripts on their web site that explains much about Garden Park:

Intro: Paleontology Series [.wmv \(26MB\)](#) | [YouTube](#) | [Transcript](#)

Part One: Cope Quarries [.wmv \(53MB\)](#) | [YouTube](#) | [Transcript](#)

Part Two: Marsh Quarries [.wmv \(52MB\)](#) | [YouTube](#) | [Transcript](#)

Part Three: DeWeese Quarries [.wmv \(35MB\)](#) | [YouTube](#) | [Transcript](#)

Part Four: Cleveland Quarry [.wmv \(29MB\)](#) | [YouTube](#) | [Transcript](#)

Part Five: Stegosaurus Gulch [.wmv \(57MB\)](#) | [YouTube](#) | [Transcript](#)

It is interesting to note that the RGFO has an area specifically designated for the collecting of decorative stone---the Penrose Moss Rock Area located in exposures of Cretaceous Dakota Sandstone. As I understand the regulations, there are two types of collecting at the area, but both are strictly non-commercial in nature. The first is the non-permitted collecting of decorative sandstone is a reasonable amount. Here reasonable amount is "defined as small quantities of mineral material that which would fit into a standard sized wheel barrow over a one year period." Actually, this is not much material and perhaps specimens could be used in the construction of a small rock garden or something.

small rock garden or something.

Decorative rock for small, personal landscaping projects could be collected with a purchased permit. Individuals may collect up to 20 tons of rock over one month using only hand operated equipment (generally) like picks and shovels. However, pickup truck booms and winches are permissible. The BLM then charges a per ton fee (permit), currently established at \$15.

Many visitors to the FRDO lands, and other federal lands, are interested in recreational gold panning and prospecting. Unlike what the Omnibus Act provided for collecting rocks and minerals, the rules and regulations concerning gold, and other precious metals, are all over the place. In general, and this is only a generality, you can pan by hand, use a dry washer, and non-motorized sluices to hunt for precious metals on non-claimed areas. In addition, the BLM has very strict regulations about destroying streamside vegetation, fouling the water, driving to the sites, etc. For dredging and other motorized extraction, BLM permits are required. Outside of hand panning, the rules and regulations for the Arkansas River Corridor are different from rules for other river basins. See special regulations at: http://www.blm.gov/co/st/en/fo/rgfo/minerals/locatable_minerals/placer_mining.html

One interesting area that RGFO manages is known as Cache Creek, and is an old gold mining area south of Leadville near the town of Granite. This area is maintained by BLM and the Gold Prospectors of Colorado (www.GPOC.com) for recreational prospecting. In past years, Cache Creek has been very popular, especially on weekends, and some prospectors have not been kind to the environment. The BLM studied the situation

Continued—Pg 7

SECRETARY'S SPOT

by Jean Miller, CSMS

COLORADO SPRINGS MINERALOGICAL SOCIETY **CSMS General Meeting 15 March 2012**

President Roger Pittman presented an interesting slide show and lecture on the Calumet Mine, located near Salida, CO.

Subgroups leaders gave updates and invitations to their next scheduled meet-

ing. Sharon Holte, lapidary group, announced that there is an additional diamond saw added to the tool collection. Yam is working on a field trip to the Holcim Cement Quarry. It is a great beginners' field trip where you'll certainly find good claims. You will be required to wear hardhats and other safety gear.

Show update: This year's show will be on June 22, 23 and 24. Fifteen of thirty dealer spaces are reserved. Brad of the WMMI reported that the museum is glad that the show will again be held at the museum. Brad will help with advertising, including a sign near the highly travelled Struthers Road, in the donkey's pasture. Roger requests volunteers to come forward. We will need rock and mineral contributions for the kids' area. We have about 20 spaces for display exhibits. Security, grounds crew, hospitality hosts, etc. will be needed.

Roger thanks the club members who served as judges at the Science Fair, including Roni Poteat, Jack Hall and third volunteer judge's name whose name slipped his mind. The student winners were invited to come and bring their projects to our next meeting and receive their awards.

Old News: Ray Berry was presented with the Founder's Trophy. Congratulations, Ray.

Continued—Pg 7

The End

and has issued the following information: *the RGFO determined that “mining” activities on the Cache Creek property should be limited to recreational-level mining and should not include motorized or mechanical devices to aid in the collection of minerals.*

Therefore, starting on Memorial Day in 2012 (May 28), high banking activities will no longer be permitted at the Cache Creek Placer area. Recreational-level gold panning and other non-mechanized/ non-motorized activities will continue to be allowed in the area.

To inquire about recreational prospecting on other FRDO lands it is always best to contact one of the BLM field offices. The same applies to questions about rock hounding and/or claims. I have found the staffers to be a friendly bunch and most helpful in answering questions and offering advice.

[*It is perhaps a more fortunate destiny to have a taste for collecting \[minerals\] than to be born a millionaire.*](#) Apologies to R. L. Stevenson

The End

PRESIDENT'S CORNER

by Roger Pittman, CSMS

Here it is April already, spring is here and I'm ready to head for the hills! My gaze looks at Pikes Peak and there is still quite a bit of snow up in the high country. So we'll need to stick to the lower ground. Frank & Ellie took a trip up to our Peridot claim and report that there is no snow there so if you want to go there just report who went and how many hours you were there to Yam for his records. I've been working on getting our show put together. I purchased some scrap steel to make a sign for us to use at WMMI now I need



to do a little cutting and welding to make it usable. REMEMBER we need helpers! In between working on the show stuff I would like for you to be thinking about where you'd like to go on field trips this year. Let Yam or me know and we'll try to find someone who knows how to or who to we need to talk to. I'd like to go to a few places that I've never been to before even if I don't find anything. Would you like us to get someone that you think would be a great speaker? Let us know who it is and we'll try our best.

COLORADO MINERAL & FOSSIL SHOW-SPRING

APRIL 20-21-22, 2012

Same Location – New Name!! Ramada Plaza Denver Central (formerly Holiday Inn)

4849 Bannock St. (Retail and Wholesale)

Friday & Saturday, 10 a.m. – 6 p.m., Sunday, 10 a.m. to 5 p.m.

Free Admission – Free Parking – Open to the Public

Minerals, fossils, gems, jewelry, beads and lapidary

Local, national, and international dealers.

Many new dealers this year!

Extinction Cont from Pg 1



Thylacinus cynocephalus was the largest known carnivorous marsupial of the Holocene. It is commonly known as the Tasmanian tiger (because of its striped back) and was native to Australia, Tasmania and New Guinea, it became extinct in the 20th century and was the last living member of its family, Thylacinidae. Artwork © by Zach Seplveda, 2012

Author bio: Zach recently moved to the Pikes Peak region from San Diego, CA. He became interested in paleontology by visiting the La Brea Tar Pits in Los Angeles as often as he could. Zach recently helped a university geology field course (Emporia State University, KS) at the Cripple Creek and Victor Gold Mine where he assisted the field trip leader (Steven Veatch) and aided the students in collecting lamprophyre, a mafic rock that is derived from the mantle. Mantle rock at the surface is extremely rare, and this experience may have turned his interest to rocks and minerals as well. Zach is 14, attends Palmer Ridge High School, and regularly goes to all of the functions of the Colorado Springs Pebble Pups and Juniors.

CRYSTAL GROUP

1 May: Meeting as normal. May organize field trips.

June, July, August, no meetings.

September Meeting as normal. Summer finds, bring them, show them, and discuss them.



Roger reported that at a recent Special board meeting the board voted to support the WMMI Reynold's House project with \$500. Club Secretary Jean Miller reported however that the WMMI has decided not to pursue that particular grant at this time but thanks the club for its current and future support. It is important to remember the common goals and interests of the CSMS and what WMMI, as well as personal connects from nearly a century ago. Roger asks us all to spend the whole week cleaning out our garages and collecting things to contribute to the silent auction at the WMMI Museum on 24 March 2012! Call Roger if you need more information. Ellie will bring many magazines for sale, some from Jesse Black's estate. Mr. Black and his wife have since passed away. Proceeds from this auction will go to support our club's subgroups and our four mining claims. The June show silent auction proceeds go into the scholarship fund.

Membership Secretary Roni Poteat reports that almost everyone that is present here today has paid dues. After March the database will be purged and those who haven't paid dues will no longer receive Pick and Packs nor be listed on any CSMS roll. Roni sincerely apologizes for inadvertently leaving spouses' names off of the membership directory; a supplemental Excel data sheet is available from her for the asking. Meeting adjourned.

Respectfully submitted, Jean Miller

The End

CRYSTAL SALE

Saturday & Sunday

MAY 5th & 6th

9AM - 4 PM

7513 Tudor Rd, CS. CO

EXIT 1-25 #149

Ray Berry

719 598-7877

rayber@q.com

Continued on pg 10

Uptop

By Steven Wade Veatch

The winter snow blankets the town of Uptop.
A wind blows hard, swirling angry flakes of snow.
Light from coal-oil lamps falls through cabin windows—
casting a golden glow down a silent, snowy street.

People of Uptop long for the days of springtime;
the changing realm of white to robust green,
when summer's blooms spread cheerful colors—
and alpine beauty stirs dreams of travelers coming on rails.

For decades they came over the mountain pass and endured;
some searching streams for gold or looking for silver in mineral veins.
Others started ranches where the grass and water was good.
Each one tamed the West and the grieving mountains.

The depot still stands, built by section hands in 1877,
to meet countless fortune seekers coming over old La Veta Pass.
Today the rails are gone and the travelers are few.
Only a small number remain in the small town of Uptop.

On Sunday at the Chapel by the Wayside, among the trees,
a church bell breaks the weekly silence—renewing the sprits—
of humbled hearts to stay for another peaceful year,
in Uptop, Colorado, the secluded and cherished place.

DIRECTIONS TO UPTOP GHOST TOWN, COLORADO:

TWO turnoffs to Uptop ghost town are located off Hwy 160:

- 20 minutes east of Ft. Garland, CO: turn at mile marker 276:
- 15 minutes west of La Veta or 20 min. west of Walsenburg: turn at mile marker 281



More Silent Auction Fun

2012 CSMS Officers

Roger Pittman, President

Kay Thompson, Vice President

Jean Miller Secretary

Ann Proctor, Treasurer

Sharon Holte, Co-Editor

Ellie Rosenberg, Co-Editor

Roni Poteat, Membership Secretary

Mark Lemesany, Member-at-Large

Jack Thompson, Member-at-Large

Ron Yamiolkoski, Past President

2012 CSMS Chair Persons

Roger Pittman, Annual Show Chairperson

Ron Yamiolkoski, Field Trip Director

Ron Yamiolkoski, Science Fair Chair

Brenda Hawley, Historian

Frank & Ellie Rosenberg, Librarians

Camera Club Chair is Vacant

xxx, Social Committee Chair

Ann Proctor, Store Keeper

Kerry Burroughs, Crystal Studies Group

Paul Berry, Faceting Group

Mike Nelson, Fossil Group

Bill Arnson, Jewelry Group

Sharon Holte, Lapidary Group

Steven Veatch, Juniors & Pebble Pups

Dave Olsen, Micromount Group

Brian Paterson, Webmaster

To contact an officer or chairperson, go to csms.us, click on Board Members, and, if their name is underlined, click on it.

Sub-Group Responsibilities for Refreshments for General Assembly Meetings

Feb.—Crystal	Mar.—Faceting	Apr.—Fossil
May—Jewelry	June—Lapidary	July—Micromounts
Aug.—Picnic	Sept.—Projects	Oct.—Board

Please announce this field trip in your April, April, and May newsletters.

This is a public service announcement

Field Trip Description:

The Cripple Creek Mining District is one of the most interesting geologic regions in the country. In this field-oriented program, be prepared lively discussions and lots of adventure as we explore the District's remarkable modern and historic mining operations. We will learn about the geology and rich mining history of the area and **spend a good part of the day touring current mining operations of the Cripple Creek and Victor Gold Mining Company**. Be sure to bring your camera and be prepared to take many pictures of the remarkable mining operations up close and in person! Since part of this program is conducted in the field, participants must dress appropriately for mountain weather that can change suddenly. Teachers taking this course will receive a resource CD for their classrooms. **Colorado School of Mines "graduate-level relicensure credit" is available for this field trip. The cost is \$35, and is to be paid with a check made payable to the Colorado School of Mines.** Registration will take place for those who want this credit during our first break. **This class is open to EVERYONE**, including families, students, and children. The visit to the gold mine will entail some risk as it is an active mining operation. Everyone will have to obey the instructions of the exploration geologists who will join us, the trip leader, and trip assistants.

Field Trip Date: June 30, 2012

Registration is through the Cripple Creek Park and Rec. A bus provides transportation through the area and to the active gold mine. This class is open to all pebble pups and parents. They must register and pay the field trip fee to Cripple Creek Park and Rec soon. **The phone number to register at Cripple Creek Park and Rec is 719-689-3514**

Cost for field trip is: \$25.00 for adults, \$9.00 for high and middle school students; includes all handouts, materials, and snacks for the morning and afternoon.

Itinerary

8:30 a.m. Orientation at the Cripple Creek Park and Rec office

9:00 a. m. Arrive and Cripple Creek and Victor Mining Company

12:30 p.m. We can meet for lunch in Victor's park downtown.

Bring your own sack lunch.

1:00 p.m. Explore the Vindicator Mine, Theresa Mine, and the Independence Mine

3:00 p.m. Tour the mineral exhibits of the Cripple Creek Museum

4:00 p.m. Tour the Pikes Peak Heritage Center

5:45 Return to Cripple Creek which has many evening diversions, including theater at the Butte Opera House.

Instructor:

Steven Wade Veatch

is a geoscientist and an adjunct professor of Earth Science at Emporia State University in Kansas where he received an MS in Earth Science. Steve has been involved in geoscience education initiatives for over 25 years. He has contributed chapters to 3 books: *Field Trips in the Southern Rocky Mountains, USA*, *Field Guide 5, The Paleontology of the Upper Eocene Florissant Formation, Colorado*, and *The World's Greatest Gold Camp: An Introduction to the History of the Cripple Creek and Victor Mining District*. Steve is from a pioneering mining family from Cripple Creek. He lives near the Florissant Fossil Beds in Colorado

Contact: Email: steven.veatch@gmail.com **Blog:** <http://coloradoearthscience.blogspot.com/>

We sure could use more articles for this page. Sub-group leaders have you appointed a scribe? Well.... Look for write-ups...

THE THIRD ANNUAL
**CSMS SILENT AUCTION AND BAKE
SALE AT WMMI**

Sponsored by the Colorado Springs Mineralogical Society

Saturday, April 24, 2012 - 10:00 AM until 2:00 PM

JOIN THE FUN!

Lots of fun for the whole family. We will have an assortment of mineral specimens, slabs for lapidary work, fossils and finished pieces for folks to bid on. There will also be some special items of interest to capture your attention and earn a bid. Club members will be donating an assortment of home made goodies to purchase. Come see the Museum, have some fun bidding for some items and take home a few goodies to eat later.

Admission: Standard WMMI Admissions apply. CSMS members and other WMMI supporting clubs admitted free.

Western Museum of Mining & Industry
225 North Gate Boulevard
(I-25 Exit 156A)
Colorado Springs, Colorado

For additional information about CSMS or WMMI:

www.csms.us

www.wmmi.org



PICK & PACK

Our Staff...

Sharon Holte & Ellie Rosenberg—
Co-Editors
CSMS Members *Reporters*

We encourage everyone to submit articles, photos, illustrations or observations.

Share your experiences, trials and tribulations, your new finds, or simply your experience at our last field trip.

The ability to write well is NOT a requirement. We will fix the grammar while keeping the author's voice, style, and work intact.

Handwrite it, type it, or email it. Format does not matter. All submissions are welcomed.

DEADLINE for items to be included is the **Saturday after the Board Meeting** - first Thursday of each month

To submit an item, please use the following:

For hardcopy photos or articles, mail to the address below or bring them to the General Assembly Meeting. All hardcopy photos remain the property of the submitter and will be returned. Electronic photos should be submitted at resolutions above 200 dpi in TIF, BMP, JPG, or PIC format. Articles are preferred in word. Editors will correct font and type.

All articles not shown with an author are provided by the Editor.

E-Mail to: preferred
SharonRocksCo@gmail.com

Mail to:
Pick & Pack Editors



Asbestos Andy plays with matches.

NOTICE—Items listed for sale in the Pick & Pack are displayed only as an informational service to our members and advertisers. CSMS and/or the Pick & Pack do not promote nor warranty any item displayed. The sellers and buyers are responsible for the condition and ownership of any item shown.

Classifieds

CSMS

T-Shirts, Badges, and Pins

are available for sale. See Store Keeper, Ann Proctor.

Hurry! Hurry!! Hurry!!

Have You Picked Up Your

Membership Award Pin(s)?

If you celebrated a CSMS anniversary in 2007, 2008, 2009, or 2010, your year pin award is available

ACKLEY'S ROCKS

Services: Lapidary, Silversmithing, Goldsmithing,
and Jewelry Repairs
3230 Stone Ave. Colorado Springs, CO
80907 719-633-1153

Hours: 9 to 5, every day but Sunday.

Sangre de Cristo

Gallery & Rockshop

Steve & Peggy Willman
114 Main Street, Westcliffe, Colorado 81252
(719) 783-9459 gallery@ris.net

2012 Lake George GEM AND MINERAL SHOW

SHOW

FRIDAY, SATURDAY, & SUNDAY

August 17, 18 & 19

9 am to 5 pm

KRYSTALS
Gems • Minerals • Jewelry
Crystal Skulls
Wands • Violet Flame
By Appt. Only
719-531-7203
Joe & Marylee Swanson Colorado Springs, CO
Krystals@webtv.net

The Colorado Springs Mineralogical Society

Pike's Peak Gem & Mineral Show

June 22th, 23th and 24th, 2012

Western Museum of Mining & Industry, Colorado Springs, CO.

Request for NON-COMPETITIVE Display Space

Name:

Society:

--	--

Address:

--

Phone:

Email:

--	--

City:

State:

Zip:

--	--	--

Exhibitors are urged to bring their own cases. A limited number of club cases are available upon request. Exhibitors using club cases will need to furnish any risers, linings, padlock or accessories as needed. EACH CASE WILL BE **Describe Display or Displays:**

--

	I will bring my own display	Your case length	#of cases
	I will need a case*	Case size desired	#of cases

* CSMS cases are approximately 36" by 24" outside measurements. A few 4-foot cases are generally available. There is a hasp on the case that accepts an exhibitor-supplied padlock. Setup is from 7:30 AM to 9 AM on Friday. Tear down 3 PM to 5 PM on Sunday.

Signature of Non-Competitive Exhibitor: _____

With the signing of this request, email submission of this document or showing up with an exhibit, it is mutually agreed that the Colorado Springs Mineralogical Society and the Western Museum of Mining & Industry shall not be liable to any exhibitor for damage, loss or destruction of any exhibit or injury to his person for any cause and all claims for injury are expressly waived by the exhibitor.

Please return by mail or email by:

RETURN TO: Bob Landgraf

June 15th to reserve a case and exhibit space.

304 Palmer Trail

After June 15th exhibitors are still welcome

Manitou Springs, CO 80829

based upon availability of cases and space.

719-685-1364

rmlwp74@aol.com

The Colorado Springs Mineralogical Society Case.

All measurements are inside measurements. However, since all cases are handmade there may be some slight variations in the cases. Be sure to bring any necessary tools required to make adjustments to your liners.

Bottom is 35 in wide by 23 in deep

Back is 35 in wide by 21 1/2 in deep

Side bottom is 23 in deep by 21 1/2 in high by 19 in deep at the top

Unfortunately, the pictures Bob Landgraf included will not copy and paste

If you have any questions, please feel free to call Bob Landgraf at **719-685-1364** □



Taking Money



And, More Silent Auction Fun

Eating

FOSSIL GROUP

1 May: study of types of fossilization; participants should bring examples of fossilized organisms.

7:00 p.m. Senior Center. / / May organize field trips.

June, July, August, September: no meetings.

October, November, December: meetings scheduled for first Tuesday of the month but subject to change.

FASCETING GROUP

1 May: Meeting as normal. May organize field trips.

June, July, August, meeting as normal.

September Meeting as normal. Classes will start. No dates available, yet!

SUMMER PLANS

Find and check out your sub-groups schedule for in the Pick & Pack. Check out the field trips on the web-site. And, make your plans for the summer fun.





P.O. Box 2
Colorado Springs, CO 80901-0002

PICK&PACK

P.O. Box 2

COLORADO SPRINGS, CO 80901-0002

Postage Here

Time Value
Do Not De-
lay



Joining the Colorado Springs Mineralogical Society (CSMS)

General Assembly meetings are held the **third (3rd) Thursday of each month**, except January & August, (picnic) **beginning at 7:00 p.m.** at the Colorado Springs Senior Center, 1514 North Hancock Blvd., Colorado Springs, CO. **Visitors are always welcome.**

CSMS also offers Satellite Group meetings that allow more focused attention in specific areas of our members' interests. Our current Satellite Groups consist of the following: Crystal Study Group, Faceting Group, Fossil Group, Jewelry Group by RVSP, Lapidary Group by RVSP, Micromounts Group, and Pebble Pups/Juniors. For details on Satellite Group meetings, check out the calendars on page 2 and the web-site.

Yearly dues include 10 issues of the *PICK&PACK*, all field trips (additional fees may be required on some field trips, and members are responsible for all transportation to and from), participation in all Satellite Groups (some groups may request additional fees to help cover resource costs), free admission to the *Western Museum of Mining & Industry*, a year of learning and enjoyment, plus a lifetime of memories.

Individuals—\$30 Family—\$40 Juniors—\$15 Corporate—\$100 *****Application is on the web-site.

If you are interested in joining CSMS or would like more information, we encourage you to attend our next General Assembly meeting or visit our web site: www.csms.us.