

PICK&PACK

THE BULLETIN OF THE COLORADO SPRINGS MINERALOGICAL SOCIETY Published Since 1960

APRIL 2008

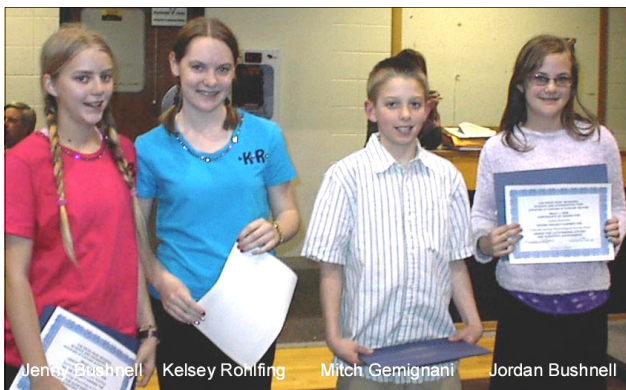
PICK&PACK

Volume 48 Number 3

2008 PIKES PEAK REGIONAL SCIENCE FAIR

March 1st was an exciting day for CSMS Science Fair Judges **Drew Malin, Bill & Betty Cain, and Ron "Yam" Yamiolkoski**. They were privileged to see the 245 exhibits of students in El Paso, Elbert, Park, and Teller counties at this year's Fair.

The purpose of the Pikes Peak Regional Science Fair is to stimulate students to take a more active interest in the study of science and mathematics; to encourage able students, through experiment and competition, to consider scientific careers; to provide a means of reward and recognition; to arouse interest in the scientific ability of young people by affording capable students an opportunity to reveal the results of their extracurricular work.



To conceive, design, and complete a project requires the students to use their powers of observation, imagination, originality, and tenacity. The more the student puts into a project, the more the student benefits.

Inside this issue:

2008 Science Fair	1
President's Corner	2
April Program	2
Show Meeting	2
May 3 Field Trip	2
School Presentation	2
AFMS News	3
Upcoming Shows	3
WMMI Happenings	3
CSMS Items	4
Pebble Pups	5
Dino Art Contest	5
Mini Miners Monthly	6
Group Changes	6
Tips & Tidbits	6
RMFMS President's Message	7
Stay Out of the Water!!!	7
Martin Zinn Expositions Show	8
Calendar, Locations & Contacts	11
CSMS Minutes	10
Spring Field Expedition	10
Groups, Classifieds & Advertisers	11
Show Entry Forms	12



Yam announces the CSMS winners

A group of students is selected to enter the Colorado State Fair. Additionally, one or more students might win expense-paid trips to the International Science Fair.

The winners chosen by CSMS were multiple winners and not only received \$250 for First, \$125 for Second, and \$50 for Third prizes but also awards

from a long list of prestigious organizations.

Yes, there are two familiar names among our winners, and no, it wasn't 'fixed' ☺ It just happened that our first and third place winners were the daughters of CSMS member Jim Bushnell. Jordan's first place experiment, "Glue-filled mountain", certainly caught our attention. With a name like "Gem"ignani, how could our second place winner go wrong? Mitch's experiment, "Under Pressure", was definitely within the scope of our judging criteria. Jenny & Kelsey's "Do your rocks need sunscreen?" taught the old-timers (no names mentioned)

See "Science Fair" on pg 4

CSMS is an incorporated nonprofit organization with these goals:

- To promote and disseminate knowledge of the earth sciences, especially as they relate to mineralogy, lapidary, and fossils.
- To encourage study, collection and fashioning of minerals.
- To accomplish the same through social meetings, lectures, programs, displays, shows, and field trips.
- The Pick&Pack is published monthly to assist and promote the above.

Rick Copeland President
 Ron Yamiolkoski Vice President
 John Casto Secretary
 Ann Proctor Treasurer
 Betty Cain Editor
 Mike Nelson Member at Large
 Charles Webb Member at Large
 Drew Malin Past President
 Bill Cain Membership Director
 Brent Williams Field Trip Director
 Drew Malin Show Chairman

Proud Members of:

American Federation of Mineralogical Societies (AFMS)
www.amfed.org

Rocky Mountain Federation of Mineralogical Societies (RMFMS) www.rmfmts.org

Colorado Federation of Gem & Mineral Societies (CFMS)
www.coloradorocks.org

Colorado Springs
 Mineralogical Society

Founded in 1936

Lazard Cahn

Honorary President

**Our Staff...**

Betty Cain	<i>Editor</i>
Bill Cain	<i>Mailer</i>
CSMS Members	<i>Reporters</i>

We encourage everyone to submit articles, photos, illustrations or observations.

Share your experiences, trials and tribulations, your new finds, or simply your experience at our last field trip.

The ability to write well is NOT a requirement. We will fix the grammar while keeping the author's voice, style, and work intact.

Handwrite it, type it, or email it. Format does not matter. All submissions are welcomed.

DEADLINE for items to be included is the next Saturday of every month.

To submit an item, please use the following:

For hardcopy photos or articles, mail to the address below or bring them to the General Assembly Meeting. All photos remain the property of the submitter and will be returned. Electronic photos should be submitted at resolutions above 200 dpi in TIF, BMP, JPG, or PIC format.

Mail or email to:
bcain2@earthlink.net or
Info@csms.us
PO Box 2
Colorado Springs, CO 80901
Phone: (719) 634-8205

The PICK&PACK is published at least ten (10) times per year; 275-300 copies mailed per month (no issues in January or August).

Unless otherwise marked, materials from this publication may be reprinted. Please give credit to the author and CSMS PICK&PACK.

PRESIDENT'S CORNER



Rick Copeland

This week I was able to wash out my rock tumblers in the front yard with the garden hose, giving my neighbors another opportunity to play, "What's that guy up to now?" But more importantly signifying that Spring is here! (*Editor's Note: You couldn't tell it's spring by the 6" of snow that covered our lawn on Easter Sunday!*) With the warmer temperatures, some of our favorite collecting spots or claims start to come out of their winter slumber. Which brings me to this month's

President's Corner subject: Field Trips. Brent Williams has had some interest from members who want to lead field trips but no commitment to dates. So please, get out your calendars, figure out a weekend, and contact Brent. We have a lot of new members. Let's show them what CSMS rock collecting expertise we have and lead a field trip.

Of course I can't let a month go without soliciting for volunteers for the upcoming June Show. Also, display cases. CSMS has a supply of display cases waiting for you to put together your competitive, non-competitive, or educational display. Contact Drew Malin if you are interested in volunteering and/or entering a display case in the show (*forms on page 12 & 13*). June will be here before we know it.

Until next month, or as Neil Young says: Keep on Rocking in the Free World!

APRIL GENERAL ASSEMBLY PROGRAM

"Odd Ball Quartz" is the topic of the April program being presented by **Jack Thompson**, CSMS Life Member, collector, and highly decorated show exhibitor. Quartz is the most prevalent mineral on earth and comes in many crystalline and cryptocrystalline varieties. Come hear the presentation and find out which one is considered the odd ball.

SHOW MEETING—APRIL 17, 6:30P

The 4th show meeting will be held prior to the April General Assembly in the Senior Center Lobby. The show is drawing ever closer; volunteers are still needed. Diamond Dan has provided Mini Miner Mineral Bingo Games; they are clever and colorful—not just for kids!

FIELD TRIP—MAY 3, 10A

Fountain Creek Walk, Hanson Nature Park, Fountain, CO. Everyone is welcome. We will find petrified wood, agates, river-tumbled crystals, and Indian artifacts. Wear shorts and tennis shoes. Bring a small back pack, a 3-prong hand garden rake, and drinking water. No restrooms.

CSMS SCHOOL PRESENTATIONS BY ROGER PITTMAN, CSMS

Thanks to new member **Laura Canini** and her son **Julian** for helping with our presentation at Colorado Springs Christian School on February 22nd. We had about 75 children in groups of 25.

Contact **Roger** at (719) 683-2603 or rpittman@netzero.com if you'd like to participate in this rewarding experience. Specimen donations are also needed; so clean out that pile in your garage and share it with our school presentations.

When you head out this spring on a field trip or any other type of outing that involves federal lands, don't be surprised to find roads blocked by gates or earthen structures and many parks, camp sites, and trails closed. In spite of congressional legislation that requires proposals and recommendations for road closures based on in-depth studies and public hearings, the U.S. Forest Service has more or less chosen to ignore the congressional mandate and is pursuing a course that is indiscriminately restricting the public from vast areas of federal lands. Trying to understand the rationale they use in choosing areas to be closed is impossible and reminds me of a game kids play called "pin the tail on the donkey".

During the early 1980's the U.S. Forest Service began to make changes in their philosophy for the management of forest resources. In all fairness, I want to acknowledge up front that in large part this was because of reductions in federal funds; however, in recent years the reduction in funds has become a scapegoat for placing millions of acres off limits to the public because of pressure exerted by well-financed special interest groups. These restrictions may very well come back and bite them in the backside, but that will be of little consolation for us as our tax dollars will be used to correct the mistakes.

The following USDA News Release is the new philosophy in a "nut shell", so to speak. It also contains the website for a more detailed version:

NEWS RELEASE
USDA Forest Service, Washington, D.C.
Release No. 0721

USDA FOREST SERVICE RELEASES FIVE YEAR STRATEGIC PLAN
WASHINGTON, October 29, 2007—U.S. Forest Service Chief Abigail Kimbell announced today the release of the agency's strategic plan for fiscal years 2007-2012. The plan includes Kimbell's emphasis areas of climate change, water and involving youngsters in forest activities.

"Forests play a unique role in meeting our Nation's future challenges associated with climate change, renewable energy, and sustaining abundant flows of fresh water to the American people," said Kimbell. "Because issues related to climate change and looming water shortages will take (See "Forest Service" on page 4)

WMMI HAPPENINGS

Mining Museum Teacher Seminar
Mining & Minerals: The Foundation of Society
(Accredited through the Colorado School of Mines)

Teachers and other interested adults can join the WMMI on **April 12, 2008**, from 8:30 to 5:30 for a fascinating day exploring Colorado's mining heritage! Participants will learn about historic mining and milling (including a one-of-kind virtual tour of the Ghost Town of Gillman and the associated Eagle Mine!), explore modern mining methods, environmental considerations, and become familiar with available mining educational resources. The course teacher is Geologist, **Steven Veatch**, whose research has focused on paleontology, Colorado geology, and Quarternary geology. Steve is an adjunct professor of Earth Science at Emporia State University where he received a MS in Earth Science and



has published over 100 articles and professional papers on geology and regional history. The course fee of \$50 includes all materials and a box lunch (\$40 for WMMI members). For an additional fee of \$30, participants may earn .05 graduate-level semester credit from the Colorado School of Mines. This credit is optional but is applicable for teacher license renewal in the State of Colorado and is generally accepted elsewhere. Please contact the Museum for additional information and reservation procedures at 719-488-0880.

COLORADO PROSPECTING & MINERAL COLLECTING SEMINAR (AKA: NEW MEMBER ORIENTATION) - Saturday, May 17, 2008; 10:00a—7:00p

Come to the Western Museum of Mining & Industry to catch the fever and discover the secrets of (See "WMMI Events" on page 5)

UPCOMING SHOWS

Apr 25-27

Colorado Mineral & Fossil Show, Holliday Inn, Denver Central (I-25 & I-70); Sat 10-6 & Sun 10-5 (see page 8 for more info).

Apr 25-27

55th Annual Wichita Gem & Mineral Society, "Nature's Wonders—Dazzling Gemstones"; Gene Maggard at show @wgmsks.org

May 2-4

McPherson Gem & Mineral Club; contact (620) 241-2433 or (620) 241-7003

May 10-11

Grand Junction Gem, Mineral, and Jewelry Show, First & Main; contact Dave McCollough (970) 523-5443.

May 16-17

35th Annual Rock Swap, sponsored by the Ellinwood, KS Chamber of Commerce; (620) 564-3300

May 21-28

NW, Rocky Mountain, & CA Federations Rockhound Rendezvous in Texas Springs, NV. Details on RMFMS website, www.rmfmts.Org

Jun 21-22

CSMS 45th Annual Gem & Mineral Show, Phil Long Expo Center, Colorado Springs; contact Drew Malin at Advanceone @comcast.net

Aug 7-10

Contin-Tail, Buena Vista, CO, FREE TO THE PUBLIC, www.coloradorocks.org, (303) 833-2939 or (720) 928-4194

Sep 25-28

AFMS Show, Humble, TX.

Nov 7-9

RMFMS Show, Tulsa, OK.

SCIENCE FAIR—CONT'D FROM PG 1

something they didn't know—fluorescents fade under direct sunlight!

The Fair's Award Ceremony drew a large crowd of spectators including parents, teachers, and award presenters in the UCCS gymnasium.

March 20—CSMS General Assembly Meeting: We were honored to have our chosen winners present their exhibits to our membership. **Jordan Bushnell**, 1st place winner, had to leave early due to illness, but her dad, **Jim**, did a good job of explaining her experiment. (*Hope you get well soon, Jordan; Dad get a good job, but he's not as cute as you!*).

CONGRATULATIONS to all; we look forward to seeing your exhibits at our 45th Annual Pikes Peak Gem & Mineral Show on June 21-22!



Mitch Gemignani, 2nd place, makes his project presentation.
Great job, Mitch!
(Loved the uniform©)



3rd place winners, **Jenny Bushnell & Kelsey Rohlfing**, present their team project.

FOREST SERVICE—CONT'D FROM PG 3

many years to resolve, the Forest Service is committed to instilling stronger land ethics in future generations."

The Forest Service Strategic Plan for FY 2007-2012 provides a clear yet broad direction to carry out its mission of natural resource management while focusing on critical programs and activities. The Forest Service strategy includes the integration of environmental, social, and economic issues into its management decisions while accounting for present and future needs.

The Forest Service Strategic Plan can be found at: www.fs.fed.us/publications/strategic/fs-sp-fy07-12.pdf

So what does this mean for you? Ultimately it will mean fewer places for field trips and other outings as competition is increased for access to private property as trail bikers, 4-wheelers, hunters, campers, etc. are displaced from federal lands and seek out new areas for their pursuits. It will also mean higher prices for lumber and wood products, fuel, and minerals used to make our lives more productive and comfortable.

The underhanded, covert methods being used for taking away public access to federal lands without public approval or hearings will continue unless we take a stand. Become involved and let your opposition be known. We are not alone in this fight and can increase our leverage by joining with other groups that are opposed to the road closures and limiting the public's access to lands controlled by the Forest Service. Find a way to become aware and to keep yourself up to date on these important issues in your area. I recommend that you or your club join the American Lands Access Association and also the BlueRibbon Coalition (sharetrails.org). These are two of the better ones for keeping informed, but there are many more and some of them may be located in your immediate area.

REMINDER . . .

CSMS T-shirts, patches, and membership pins are available at each meeting. Show your pride—wear a CSMS T-shirt or vest.

Check with the **Bill Cain**, Membership Secretary; you may be entitled to a free membership year pin! If you were a new member in 2006 or 2007 and renewed your membership, a free pin is waiting for you to pick up. Anniversary pins for 5, 10, 15, 20, and Life memberships are also being awarded. You may purchase the previous year pins for a nominal fee of \$5 each.

See **Linda Laverty** to sign up for the new vests; \$25 each.

PEBBLE PUPS

By BETTY CAIN

April's program will be "Chili today, Hot Tamale: Let's Look at Colorado's Climate." How climate can change the landscape and change rocks.



Pups attending the March meeting earned their first FRA badge, *Rocks & Minerals*.

A field trip is planned for May 3rd, Fountain Creek Walk. Wear tennis shoes; we get wet ☺. Pups should be accompanied by an adult. Call Steve Veatch for further instructions 748-5010

Continue working on your exhibit for the Show—June is just around the corner.

Class starts at 6:30p and will conclude before the General Assembly starts at 7:30p. Bring your notebooks! Adults are always welcome.

WMMI EVENTS—CONT'D FROM PG 3

mineral collecting and gold prospecting in Colorado's world famous geology. With the assistance of the Colorado Springs Mineralogical Society, the Gold Prospectors of Colorado, the Lake George Gem & Mineral Club, and the Friends of the Florissant Fossil Beds, experts in Colorado geology will teach an introduction to mineral collecting and gold prospecting. Starting at 10a, this event-filled course will include a practical hands-on session in the morning, a classroom session in the afternoon, and a keynote speaker in the early evening.

Plans for the morning practical session, which will be conducted on the Museum's beautiful grounds, include the demonstration of placer gold mining equipment, metal detectors, global positioning satellite systems, map reading and orientation, and mineral collection organization and display.

The afternoon classroom session will cover Pikes Peak regional geology and Colorado gold: Where and what to look for (structural and deposition geology and mineral ID), what tools and equipment to use, mapping applications, and the legalities of mining (how to file a claim, leasing mineral lands, and opportunities associated with county tax sales).

Finally, as part of the Museum's Heritage Lecture Series, a keynote speaker, renowned in this subject field, will lecture starting at 6p.

With the generous support of the above referenced organizations, this event is intended to be a fundraiser for the non-profit WMMI education mission. Members are encouraged to donate \$5 per person, and a \$10 donation is encouraged for all non-members. For an additional \$10 per person, a box lunch can be reserved or attendees may bring their own picnic lunch to be enjoyed on the Museum's grounds. Space is limited, so please RSVP to the Museum at (719) 488-0880.

Dino Art 2008

Prehistoric Poster Contest!

"SAVAGE ANCIENT SEAS"

DEADLINE FOR ENTRIES MAY 23, 2008

OPEN TO ALL AGES

What types of creatures were swimming in the oceans while dinosaurs ruled the land? Here is your opportunity to visualize what the Cretaceous Oceans looked like:


Mosasaurus - the T. rex of the ocean, giant 25 foot sharks and 20 foot prehistoric fish, Sea Turtles large and small...

Use your scientific imagination to bring the oceans to life!


Meet Artist
Paul Hudson
Savannah College of Art & Design

Start Drawing Today!

Winning entries will be showcased at exhibit locations in Colorado Springs and Teller County and featured in the traveling exhibit, "Savage Ancient Seas."



The Kennedy Center
**IMAGINATION
CELEBRATION**



Visit www.rmdrc.com
for contest details and prizes

201 S. Fairview St. Woodland Park, CO 80863 (719) 686-1820 X111

←

Guest artist this year is Savannah College of Art and Design professor Paul Hudson. Working through both fields of art and science, Paul Hudson has explored this world and worlds beyond.

He was originally an Imagineer for Walt Disney, where he began his career designing future habitats and vehicles for EPCOT, then for Boeing Aerospace, working with astronauts and engineers on the International Space Station. His concept design work illustrating necessary infrastructure for a return to the moon and a manned mission to Mars earned him the National Werner Von Braun Award for Outstanding Contribution to the Nation's Space Program.

The Rocky Mountain Dinosaur Resource Center will be celebrating its 4 year anniversary the weekend of June 7-8 with guest speaker Paul Hudson presenting at 11 am and 2 pm, following the Dino Art Award Presentations. RMDRC is located at 201 S. Fairview in Woodland Park just 18 miles west of Colorado Springs on Hwy. 24.

MINI MINERS MONTHLY



Agate = Quartz

You are familiar with quartz. We have had a lot of quartz crystals in Mini Miners issues. Most of the quartz you are familiar with forms crystals. Examples include rock crystal, amethyst, citrine, smoky quartz, and milky quartz.

There is another type of quartz that you have probably seen, but you may not know that it is quartz. This type of quartz forms crystals that are so small that they can only be seen with a special microscope. Mineralogists call this type of quartz *cryptocrystalline*. Chalcedony and agate are two varieties of this special type of quartz.

Chalcedony is very hard, 7 on the hardness scale. It is light. Chalcedony is usually banded. The bands alternate between fibrous bands and bands that are made up of microscopic grains. There are a number of different varieties, or types, of chalcedony. The most popular and well-known is agate.

Agate is banded chalcedony. The bands can be different shades of gray, but they can also be a number of different colors. Sometimes the different bands form randomly in the specimen with bands of red, orange, and dark brown.

Another type of chalcedony is called *jasper*. Jasper is red chalcedony. Chalcedony often forms in rounded masses.

Light to dark brown chalcedony is called *carnelian*. Apple-green chalcedony is called *chrysoprase*. Dark green chalcedony with red spots is known as *bloodstone* or *heliotrope* because the red spots look like

drops of blood. Gray and black, waxy-looking chalcedony is called *flint*.

All the different chalcedony varieties are cut and polished by jewelers and lapidary artists to make jewelry. Flint can be chipped into very sharp edges. Native peoples have used flint for arrowheads, spearheads, and various cutting tool.

Mineral Poem

By Johann W. Von Goethite

There once was a pyrite from Spain.

Who Spent too much time in the rain.

Despite all the varnish,

He started to tarnish

And his luster went right down the drain!

Information and logos used by permission of Darryl Powell, Diamond Dan Publications. Annual sub-

SATELLITE GROUP CHANGES


Jewelry Group has a new leader and location—Bill Anson, 15610 Alta Plaza Circle, Peyton, CO, (719) 749-2328 or (719) 337-8070, email ritaarnson@msn.com. Meetings will continue on the 3rd Saturday each month. Hwy 24 east to Elbert Road, north to Sweet Road, east to Cenlzo Drive, north to Alta Plaza Circle (turn left).


Lapidary Group will be hosted by Rick Copeland until the fall due to Drew's business schedule. Meetings will be held on the 1st Saturday at 6608 Gambol Quail Drive East, COS, (719) 332-7915, email Rick@rockymountainwonders.com. Located north of Dublin Blvd (traveling east or west), between North Union & North Academy.

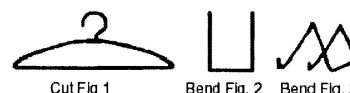
CSMS SHOW CASES ARE AVAILABLE

Contact Show Chairman, Drew Malin 531-7594 advanceone@comcast.com, if you'd like to use one of the CSMS cases for a display at the Show. Remember, displays do not have to be specimens or entered in competition. *Be creative—have fun!*

TIPS & TIDBITS:

 **Display Case** — You only have to fill a space that is about 43"x22" with specimens. That means you will probably need about 20 to 35 specimens. Don't be concerned that your specimens "are not worthy" - the presentation is the thing. Here are the major tasks you have to accomplish in sequential order: 1. Build a set of "liners" for each case you want to exhibit. A set of liners consists of: a back panel, a floor panel, and 2 side panels; each panel needs to be covered with cloth. 2. If you wish, you can add risers, steps, "floating" platforms, or other items to help display your specimens. 3. Choose the specimens you want to display. 4. Create labels for each specimen and for the case. 5. Create the desired layout at home. 6. At the show, add the liners to the case and adjust them if necessary. Clean the liners before adding the specimens. 7. Carefully add your specimens to the case. 8. Clean the glass front panel and secure it to the case. *From Denver Gem & Mineral Guild workshop, via SCRIBE CD 2007*


 **Making a Rock Slab Stand** — Cut a wire coat hanger at each end of the bottom as shown in Fig. 1 (below). Bend the straight piece of wire at a 90° angle at two points, each bend being made one inch from the wire's midpoint (Fig. 2). Next, bend both ends evenly at 2-3 inches and using pliers curl up each end (Fig. 3). *From Rocky Reader, 12/91, via SCRIBE CD 2007*




Cut Fig 1

Bend Fig. 2

Bend Fig. 3

 **Cutting Palm Root** — Palm root can be cut at different angles to get different effects. Cutting across the roots will show the round eye with the colored center and light around it. Cutting along the root will expose a wood grain surface. *From San*

Diego Lapidary Society, 10/95, via SCRIBE CD 2007

 **Sealing Stone** — Polishing a stone all over (front, back and edges) acts as a sealer. It seals and keeps the water in opal; it prevents natural corrosion in rhodonite (that corrodes to a black ore called wad), and it helps stop the absorption of harmful substances such as perspiration. *From The Ammonite 6/94, via SCRIBE CD 2007*

PRESIDENT'S MESSAGE

BY STAN NOWAK, RMFMS PRES.

Spring is just around the corner with several clubs starting to have many activities, so participate and/or attend your local and area clubs activities. And, while we are at this, I very heartily ask your clubs to entice your members to display their specimens or workmanship by entering competitive cases in the Novice Class. It is better to start at that level to learn what is needed to work one's way up the ladder to the higher levels. Yes, it may seem neat to win a gold panner's trophy, but one must start walking before you can run with the best. One doesn't have to be a youngster for the Novice Class. It is for first time or beginner's exhibition. You don't have to be embarrassed; you just want to show what you have to others.



I would like to challenge every club in the Federation for a 100% participation in the Scholarship Fund this year. Our Scholarship Fund is not hurting, but I would like to see each and every club in the RMFMS donate at least \$25 to the scholarship fund. I feel every club could donate at least that much. I know there are a few clubs that donate much more than that each year. Thank you very much. Also, several clubs annually sponsor local scholarships of their own. Great!! I want to see **Sandy Cannedy** keep busy with all these donations. Remember, I am not asking for a large sum, just the participation.

It is sad to see **Sandy Riekeman** stepping down as the RMFMS Newsletter Editor. She has done a very good job. Send your application for this position to either Sandy or myself. My mailing and email addresses are still the same; however, my phone numbers are 580-747-2046 and 580-234-3126.

I am still awaiting word to see if and when the Great Salt Plains will open to the public for hour-glass selenite crystal digging near Jet/Cherokee, OK. The last word I heard was that they wanted to open the area by the 4th of July, but that was tentative at that time.

CHECK IT OUT . . .

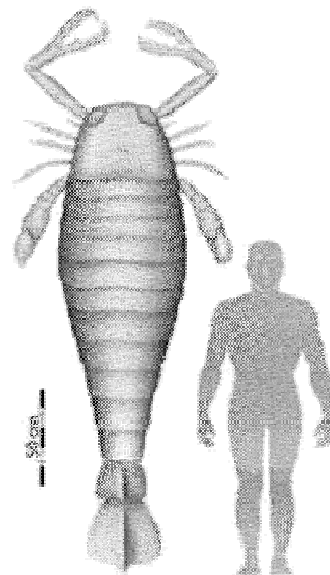
Photos of some of the Tucson cases can be seen at www.mindat.org.

A webcam on Mt St Helens can be seen at www.pnsn.org/HELENS/welcome.html.

STAY OUT OF THE WATER!!!

FROM THE FEBRUARY TRILOBITE, VIA THE AGATEER, 3/08

This is a computer generated image, issued by the University of Bristol in England released on Nov. 20, 2007, showing a size comparison between a human and an ancient sea scorpion. British and German researchers on 11/21/07 reported they had discovered the giant fossilized claw of an ancient sea scorpion that, in its heyday hundreds of millions of years ago, would have been some 2.5 meters (8.1 feet) long. The find, in a quarry near the western German border town of Pruen, is the biggest specimen of arthropod ever found, they said in a study published by Biology Letters, a journal of Britain's Royal Society. The 46-centimeter (18.4 inch) claw was wielded by a species of sea scorpion called *Jaekelopterus rhenaniae* that lived between 460 and 255 million years ago. (AP Photo/University of Bristol, HO/AFP/Getty Images).



Gigantism during the Late Paleozoic is one of evolution's many bizarre developments. It produced creatures enormously larger than their modern descendants. The most widely accepted explanation is that this was due to increased levels of oxygen in the atmosphere at the time, although other factors may have contributed as well. As an organism becomes larger, it becomes more difficult to deliver oxygen to all parts of its body. The mammals and some other large vertebrates have big lungs situated near the center of the body. This helps overcome oxygen-delivery problems. But, insects don't have lungs. (Really, when is the last time you heard an insect cough?) Instead, they have a 'tracheal system' - a branching system of ducts that allow for oxygen to be delivered to all of its cells. This system works via diffusion—the tendency for all gases to spread out, going from regions of high concentration to regions of low. But as an insect increases in size, this diffusion becomes less and less efficient. Now, if there is more oxygen in the air, perhaps as much as 35% (compared to today's 21%), this overcomes some of the diffusion inefficiency. And, that's what we think occurred in the middle to late Paleozoic.

DENVER 2008!

COLORADO MINERAL & FOSSIL SHOW—Spring

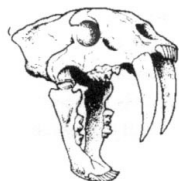
Holiday Inn—Denver Central • 4849 Bannock Street
(where I-25 meets I-70)

April 25—27, 2008

Minerals • Fossils • Meteorites • Decorator Items • Gems • Beads

**Free Admission • Free Parking • Wholesale • Retail
Delivery Show • Open to the Public**

Great Dealers from around the world!!



*Held on the same weekend as the RMBS Bead Bazaar at the
Merchandise Mart*

Fri. & Sat., 10—6 • Sun. 10-5



*Rhodochrosite - Colorado
Frederick Wilder*

MARTIN ZINN EXPOSITIONS, L.L.C., P.O. Box 665, Bernalillo, NM 87004, Fax: (505) 867-0073, mz0955@aol.com,
www.mzexpos.com

Abay Resources Technology Int'l
Alpine Mineral Co.
AmeriAsian Business Corp.
Antero Minerals & Jewelry
Artes Gems & Minerals
Artisan Jade
Atomic Perfection
Bunk, Dave, Minerals
Colorado Gemstone Svcs
Colorado Nuggets
Coloradominerals.com
Costigan's Minerals West
Crystal Group, The
Crystals from Heaven
D & J Rare Gems Ltd.
Dan's Used Rocks

Enchanted Rock Garden
Fender Natural Resources
Fenn's Gems & Minerals
Fine Gems & Minerals
Geiger, David, Minerals
GemsUSA.com
Great Basin Minerals
Great Wall Consulting
Great Wall Mineral Museum
Hands of Spirit
Himes, Leonard
Impactika Meteorites
Jeanne's Rock Shop
Kilian Collection, The
Kuhn, Anita, Collection
Midwest Minerals

Mineral & Fossil Supply Co., Inc.
Morgan Trinkets
Morocco's Fossils
Nexgem L.L.C.
Norcross—Madagascar
Northwestern Mining Co.
Olson, Donald K. & Associates
Orea Gems & Opals
Pinnacle 5 Minerals, L.L.C.
Porter Minerals International
Prospector's Choice Minerals
Raj Minerals, Inc.
Red Metal Minerals
Rhodo Co.
Rocksaholics, L.L.C.
Self-A-Ware Minerals

Silver Day Trading Co.
Star Mountain Mining
Strong Rock, The
Superb Minerals India Pvt. Ltd.
Tompson Marketing Co.
Top-Gem Minerals
Uncarved Block, The
Vasconcelos—Brazil
Vicjon Enterprises
Wendy's Minerals Co.
World Circle / Keith Christy
www.fossilwalrusivory.com
XTAL—Dennis Beals Minerals
Yuthok Tibetan Crafts & Jewelry

<i>Sunday</i>	<i>Monday</i>	<i>Tuesday</i>	<i>Wednesday</i>	<i>Thursday</i>	<i>Friday</i>	<i>Saturday</i>
APRIL 2008 — CSMS CALENDAR						
		1 April Fools Day	2	3 7p Board Meeting	4	5 12n Lapidary Group
6 2p Fossil Program	7	8 7p Micromounts	9	10	11 7:30p Crystal Group	12
13	14	15	16	17 6:30p Show Meeting 6:30p Pebble Pups 7:30p General Assembly Meeting	18	19 12n Jewelry Group
20  Passover Begins	21	22 7:30p Camera Group	23	24 7p Faceting Group	25	26
27  Orthodox Easter	28	29	30	5/1	5/2	5/3 10a Creek Walk

There are no shortcuts to any place worth going." - Beverly Sills

Locations

Board Meeting: 1st Thursday @ 7:00p. Senior Center, Ron Yamiolkoski, 488-5526

Camera Club: 4th Tuesday @ 7:30p Senior Center, Roger Pittman: 683-2603

Crystal Study Group: 2nd Friday @ 7:30p, 1514 North Hancock; Kerry Burroughs: 634-4576

Jewelry Group: 3rd Saturday @ 12n; 15610 Alta Plaza Circle, Peyton; contact Bill Arnson: 749-2328

Faceting Group: 4th Thursday @ 7:00p, Senior Center, Dave Wilson, 635-7891, dlwilson@pcisys.net

Fossil Study Group: Meets at 6p quarterly at the Senior Center contact John Harrington, 599-0989 or Steve Veatch 748-5010

Lapidary Group: 1st Saturday @ Noon 6608 Gambol Quail Dr E; contact Rick Copeland 322-7915

Micromounts Group: 2nd Tuesday @ 7:00p, 1514 North Hancock, Phil McCollum: acc@frii.com Moyra Lyne: 442-2673

Pebble Pups: 3rd Thursday @ 6:30p, Senior Center, Steven Veatch: 748-5010

REFRESHMENTS FOR GENERAL ASSEMBLY MEETINGS

Apr—Jewelry	May—Faceting	June—Show
Jul—Lapidary	Aug—Picnic	Sep—Camera
Oct—Micromounts	Nov—Fossils	Dec—Everyone

PRESIDENT	Rick Copeland	322-7915	Rick.Copeland@covad.com
VICE PRESIDENT	Ron Yamiolkoski	488-5526	TheYams@q.com
SECRETARY	John Casto	329-0912	Jcasto@fvs.edu
TREASURER	Ann Proctor	291-9010	annmgmt@msn.com
MANAGING EDITOR	Betty Cain	634-8205	bcain2@earthlink.net
MEMBER-AT-LARGE	Mike Nelson	522-1608	csrockguy@yahoo.com
MEMBER-AT-LARGE	Charles Webb	392-7214	
PAST PRESIDENT	Drew Malin	531-7594	advanceone@comcast.net
MEMBERSHIP DIRECTOR	Bill Cain	634-8205	bcain2@earthlink.net
FIELD TRIP DIRECTOR	Brent Williams	632-3552	zaphod1863@yahoo.com
SHOW CHAIRPERSON	Drew Malin	531-7594	advanceone@comcast.net
LIBRARIAN	Sarah Udell	237-7985	sarahudell@hotmail.com
CAMERA CLUB	Roger Pittman	683-2603	rpittman@netzero.com
CRYSTAL STUDY	Kerry Burroughs	634-4576	kburrou@comcastnet
FACETING GROUP	Dave Wilson	635-7891	dlwilson@pcisys.net
FOSSIL GROUP	John Harrington	599-0989	harrington1@mindspring.com
JEWELRY GROUP	Bill Arnson	749-2328	ritaarnson@msn.com
LAPIDARY GROUP	Rick Copeland	322-6915	Rick@rockymountainwonders.com
MICROMOUNT GROUP	Phil McCollum		acc@frii.com
PEBBLE PUPS	Steven Veatch	748-5010	Steven.Veatch@gmail.com
WEBMASTER	Allen Tyson	268-0775	allentyson@yahoo.com

GENERAL ASSEMBLY MINUTES

FEBRUARY 21, 2008

BY ROGER PITTMAN, FILLING IN FOR JOHN CASTO, SECRETARY

The meeting was called to order at 7:30p by Rick Copeland, President.

The February minutes were approved as printed in the *Pick&Pack*.

A moment of silence was held in honor of our friend, Vince Johnson, who passed away recently. Vince always had a ready smile and a joke to bring joy to those around him!

Treasurer's Report: None due to the books are currently being audited as directed by the CSMS By-Laws before our new treasurer, Ann Proctor, assumes her duties.

Guests and new members were recognized and asked to identify themselves and their interests.

Satellite Group Reports: **Camera Club** meets on the 4th Tuesday of each month at the Senior Center at 7:30p; March's subject is "Old Cars". **Faceting Group** meets on the 4th Thursday in the Senior Center at 7:00p. **Fossil Group** will host an open presentation, "Geology and Paleontology of the Front Range" at Jerry Suchan's home, 9603 Woodcliff Court, Peyton, CO on April 6th at 2:00p. **Micromounts Group** meets on the 2nd Tuesday in the Senior Center. **Lapidary Group** is moving to a new time and location. Watch your email! Will start meeting at Rick Copeland's house in April. **Jewelry Group** meets on the 3rd Saturday and is moving to Bill Arnson's home in Peyton, CO.

Other Reports: **Show**—Drew gave the show report. Display from the Smithsonian has been confirmed. Advertising is well under way; all we need now are many volunteers and displays! **Membership**—Bill reported that we have good membership renewals and several new members joined at the meeting. **Pick&Pack**—Betty needs your articles!!! If you are not receiving your P&P or if you want to (or not) get club emails, please contact Betty or Bill Cain. **Science Fair**—First place (\$250) was awarded to Jordan Bushnell, a 6th grade student from Irving Middle School; her teacher is Chris Smith, and her project was "Glue-filled Mountain". Second place (\$150) was awarded to Mitch Gemignani, a 6th grader at Russel Middle School; his teacher is Greg Little, and his project was "Under Pressure". Third place (\$50) was awarded to Jenny Bushnell & Kelsey Rohlfing, 7th graders at Irving Middle School; their teacher is Chris Smith, and their project was "Do Your Rocks Need Sunscreen?".

Old Business: We have membership pins, patches, and T-shirts! Vests can be ordered from Linda Laverty. The New Member Orientation class at WMMI is nearly full. Get your reservations in ASAP!

Program: Our program was our 3 Science Fair winners telling us about their projects. A great job by all! Congratulations to all of the prizewinners, their parents, teachers, and other mentors.

Cripple Creek Park and Recreation Department

SPRING FIELD EXPEDITION

A Day of Fossils, Paleontology, and Dinosaur Discoveries:

Dinosaur Ridge and the Triceratops Trail

Join **Steven Veatch** and other geoscientists for a day of investigating the world of dinosaurs, paleontology, and earth science. A Cripple Creek Park and Recreation bus will pick up Teller County participants in Cripple Creek, and then stop at the 8th Street Wal-Mart in Colorado Springs to pick up the rest of our group. Our first stop will be **Dinosaur Ridge**, a hogback west of Denver, between the towns of Morrison and Golden that exposes dinosaur-bearing rocks of Jurassic and Cretaceous age. The Dinosaur Ridge area is one of the world's most famous dinosaur fossil localities.



After a special program and orientation at the visitor center, Steven Veatch and professor Beth Simmons will provide a guided tour of the outdoor exhibits on the ridge where both bones and tracks of dinosaurs, crocodilians and other animals are visible. Starting in 1877, many of the first and best skeletons of *Stegosaurus*, *Apatosaurus*, *Diplodocus*, *Allosaurus* and other dinosaurs were excavated on the west side of the ridge.

In the 1930s, during the construction of West Alameda Parkway, dinosaur tracks were discovered on the east side of Dinosaur Ridge in rocks representing the Cretaceous Period. Following a catered lunch at Dinosaur Ridge our group will tour the **Triceratops Trail** at the Parfet Prehistoric Preserve. This half-mile hiking trail winds through old clay quarries, where our professional guides will assist us in interpreting the evidence (footprints, traces, and impressions) left by the dinosaurs, birds, mammals, insects, and plants from this very different, very swampy, habitat that is 68 million years old. Raindrop impressions are among the rarities on the Triceratops Trail. Be sure to bring your camera to take photos while you are on this unique opportunity to explore a lost world. Throughout the tour, expert scientists give their insights into the world of paleontology.

The afternoon will include a visit to the **Geology Museum at the Colorado School of Mines**. The museum started as a "mineral cabinet" put together by Arthur Lakes, the first curator of collections, in 1874. Today the museum has approximately 50,000 minerals, fossils, gemstones, and artifacts. This field expedition is perfect for all ages. Be sure to register today as seating on the bus is limited. A certificate of completion will be provided.

Date: May 31, 2007

Cost: \$33.00—includes transportation, admissions, snacks, drinks, and a catered lunch.

Registration: Cripple Creek Park and Recreation **Call 719-689-3514 to register**

Depart: Cripple Creek 6:15 am

Pickup at Wal-Mart, 8th Street: 7:25 am

Return to Wal-Mart 5:45 pm

Return to Cripple Creek 6:45 pm

Regular meetings of various groups

Café Scientifique features a talk and discussion on some current science topic; 6-30-8:00 p.m. Tuesday evening once a month (approximately the 3rd Tuesday) at the Wynkoop Brewery (Mercantile Room), corner of 18th & Wynkoop Streets, Denver. No charge; all are welcome.
<http://cafescolorado.org>

Colorado Scientific Society, monthly meetings with one or two speakers on an earth science topic, 3rd Thursday, 7:00 p.m. American Mountaineering Center, 710 10th St. (NE corner with Washington), Golden, CO. <http://www.coloscisoc.org>

Denver Mining Club, Informal weekly luncheon meetings with a speaker, every Monday, 11:30-1:00, Country Buffet, 8100 W. Crestline Ave, #A3, Littleton, CO (about 1/2 mile north and east of the intersection of Wadsworth Blvd. & Bowles), tel: 303-933-9923. No charge, but all who attend must purchase a lunch at the restaurant. See web site http://china-resources.net/den_min.html

Denver Region Exploration Geologists' Society (DREGS) meets monthly on the 2nd Monday, 7:00 p.m. Consolidated Mutual Water Company (lower level), 12700 W. 27th Ave., Lakewood, CO; no charge, all are welcome to the meetings. See <http://www.dregs.org/>

Rocky Mountain Assoc. of Geologists (RMAG) has monthly luncheon meetings with a speaker at the Marriott City Center, California St. between 17th & 18th Streets, 11:30 a.m. Luncheon cost is \$24; no reservations are needed for the talk only. See <http://www.rmag.org/>

USGS Colloquium Series, lectures on Thursday, 1:30-2:30 p.m. Foord Lecture Room, Bldg. 20, Denver Federal Center, Lakewood, CO. USGS staff, visitors, and guests are welcome. See <http://geology.cr.usgs.gov/crg/colloquia.htm>

Western Interior Paleontology Society (WIPS), meets 7:00 p.m. first Monday of the month, Sep-May, Rick- etson Auditorium, Denver Museum of Nature and Science, <http://www.wipsppc.com>

CLASSIFIEDS . . .

NOTICE—Items listed for sale in the Pick&Pack are displayed only as an informational service to our members and advertisers. CSMS and/or the Pick&Pack do not promote nor warranty any item displayed. The sellers and buyers are responsible for the condition and ownership of any item shown.



Mettler H33AR Electronic Scale, 160 gal max; accurate to .0001 grams. \$170
 Dick's Rock Shop

MINERAL SALE

**May 3rd & 4th
 Saturday & Sunday
 9 AM—4 PM**

In our barn at
 7513 Tudor Rd, CS, CO
 Exit I-25 #149

Selected
 From our collection and
 trade stock
 Hundreds of crystals to
 choose

- Most are \$1 to \$50 -

Ray & Eloise Berry
 719 598-7877
rayber@q.com

Ackley's Rocks & Stamps

(719) 633-1153

RHONDA JO HART
 ART & HELENA ACKLEY
 OWNERS
 3230 NORTH STONE AVE.
 COLORADO SPRINGS, CO 80907

DICK'S ROCK SHOP
and Bead Store

- Natural Stone Beads
- Natural Stone Eggs
- Exotic Wood Pen Sets
- Mineral and Fossil Specimens
- Gemstones
- Gold and Silver Jewelry
- Natural Stone and Wood Bookends

Cabs/Slabs
 Lapidary Equipment
 Silversmithing Equipment

Diana Wing - Owner
719-390-7788
www.DicksRockShop.com

108 W Ohio Avenue • Fountain, Colorado 80817

KRYSTALS
 Gems Minerals Jewelry
 Crystal Skulls
 by Appt. Only
719-531-7203
 Joe & Marylee Swanson Colorado Springs, CO
Krystals@webtv.net

www.kingsleynorth.com sales@kingsleynorth.com

Your Complete Supply House for Lapidary, Jewelers & Craftsmen

Free Color Catalogs - All discounted Prices
 Lapidary Supply Catalog &
 Tools, Supplies and Equipment for Jewelry
 Manufacturing Catalog

Kingsley North, Inc.
 P.O. Box 216 • 910 Brown St
 Norway, Michigan 49870-0216

Phone: (908) 563-9228 Toll Free (800) 338-9280

DENVER 2008!
COLORADO MINERAL & FOSSIL SHOW—Spring
 Holiday Inn—Denver Central • 4849 Bannock Street
 (where I-25 meets I-70)
April 25—27, 2008

Minerals • Fossils • Meteorites • Decorator Items • Gems • Beads
 Free Admission • Free Parking • Wholesale • Retail
 Delivery Show • Open to the Public

Great Dealers from around the world!!
 Held on the same weekend as the RMBS Bead Bazaar at the Merchandise Mart
 Fri. & Sat., 10—6 • Sun. 10—5

MARTIN ZINN EXPOSITIONS, LLC, PO BOX 665, BERNALILLO, NM 87004
 FAX: (505) 867-0073, MZ0955@AOL.COM WWW.MZEXPOS.COM

The Colorado Springs Mineralogical Society
June 21 & 22, 2008
Phil Long Expo Center, Colorado Springs, Colorado

REQUEST FOR NON-COMPETITIVE DISPLAY SPACE

Name:	Society:		
Address:		Phone:	
City:	State:	Zip:	

Exhibitors are urged to bring their own cases. A limited number of club cases are available upon request. Exhibitors using club cases will need to furnish any risers, linings, extension cords or accessories as needed. **EACH CASE WILL BE LIMITED TO 150 WATTS.**

NON-COMPETITIVE EXHIBIT

Describe Display:			
<input type="checkbox"/>	I will bring my own case	Case Length	
<input type="checkbox"/>	I will need a case*	Approximate Case Length*	

*CSMS cases are 36" X 24" outside measurements

Set up is Friday 4PM until 9PM; Judge / Exhibitor conferences 1:30 P.M. Saturday

Signature of Non-Competitive Exhibitor: _____

With the signing of this request, it is mutually agreed that the Colorado Springs Mineralogical Society, the Rocky Mountain Federation of Mineralogical Societies, and Phil Long Expo Center shall not be liable to any exhibitor for damage, loss or destruction of any exhibit or injury to his person for any cause and all claims for injury are expressly waived by the exhibitor.

DEADLINE: May 16, 2008
Applications will be accepted
after 5/16 on a space-available
basis.

RETURN TO: Drew Malin, CSMS Show Chairman
3085 Rhapsody Drive
Colorado Springs, CO 80920

PLEASE USE ONE FORM FOR EACH ENTRY - FORM MAY BE REPRODUCED

The Colorado Springs Mineralogical Society
June 21 & 22, 2008
Phil Long Expo Center, Colorado Springs, Colorado

REQUEST FOR COMPETITIVE DISPLAY SPACE

Name:	Society:		
Address:		Phone:	
City:	State:	Zip:	

Exhibitors are urged to bring their own cases. A limited number of club cases are available upon request. Exhibitors using club cases will need to furnish any risers, linings, extension cords or accessories as needed. **EACH CASE WILL BE LIMITED TO 150 WATTS.**

COMPETITIVE EXHIBIT

Describe Display:			
<input type="checkbox"/>	I will bring my own case	Case Length	
<input type="checkbox"/>	I will need a case*	Approximate Case Length*	

*CSMS cases are 36" X 24" outside measurements

I hereby certify that this exhibitor is a member in good standing of the AFMS.

Signature of Society Officer: _____

SIGNATURE & TITLE OF AN OFFICER OF YOUR AFMS MEMBER HOME CLUB

Set up is Friday 4PM until 9PM; Judge / Exhibitor conferences 1:30 P.M. Saturday

Signature of Competitive Exhibitor: _____

With the signing of this request, it is mutually agreed that the Colorado Springs Mineralogical Society, the Rocky Mountain Federation of Mineralogical Societies, and Phil Long Expo Center shall not be liable to any exhibitor for damage, loss or destruction of any exhibit or injury to his person for any cause and all claims for injury are expressly waived by the exhibitor.

DEADLINE: May 16, 2008

Applications will be accepted
after 5/16 on a space-available
basis.

RETURN TO: Drew Malin, CSMS Show Chairman
3085 Rhapsody Drive
Colorado Springs, CO 80920

PLEASE USE ONE FORM FOR EACH ENTRY - FORM MAY BE REPRODUCED

BETTY CAIN, EDITOR



NONPROFIT ORG
US POSTAGE PAID
COLORADO
SPRINGS, CO 80901
PERMIT No. 66

Time Value
Do Not Delay

PICK&PACK
P.O. Box 2
COLORADO SPRINGS, CO 80901-0002

April 2008



Joining the Colorado Springs Mineralogical Society (CSMS)

General Assembly meetings are the third (3rd) Thursday of each month, except August, beginning at 7:30 p.m. at the Colorado Springs Senior Center, 1514 North Hancock Blvd., Colorado Springs, CO. **Visitors are always welcome.**

CSMS also offers Satellite Group meetings that allow more focused attention in specific areas of our members' interests. Our current Satellite Groups consist of the following: Camera Club, Crystal Study Group, Faceting Group, Fossil Group, Jewelry Group, Lapidary Group, Micromounts Group, and Pebble Pups. For details on Satellite Group meetings, see page 11.

Yearly dues include 10 issues of the *PICK&PACK*, all field trips (additional fees may be required on some field trips, and members are responsible for all transportation to and from), participation in all Satellite Groups (some groups may request additional fees to help cover resource costs), free admission to the *Western Museum of Mining & Industry*, a year of learning and enjoyment, plus a lifetime of memories.

Individuals—\$20

Family—\$30

Juniors—\$2

If you are interested in joining CSMS or would like more information, we encourage you to attend our next General Assembly meeting (see page 2 for details of the next meeting) or visit our web site: www.csms.us.