

PICK&PACK

THE BULLETIN OF THE COLORADO SPRINGS MINERALOGICAL SOCIETY Published Since 1960

APRIL 2007

PICK&PACK

Volume 47

Number 4

COLORADO'S TEXAS CREEK GIANT BERYL CRYSTALS

BY TERRY BEH, CSMS

In April of 1974, Jim Tezak and his three brothers discovered some of the largest crystals in the world—and certainly in Colorado—at an open-pit, rose quartz mine they operated near Texas Creek. Originally reported in *The Mining Record*, this story seems to have been buried in history.

I first learned of this fascinating bit of mineralogical history during a brief visit last summer to the El Carma Rock Shop, located about 2 miles west of Texas Creek on Hwy 50. Wandering through the place, I noticed a couple of huge, greenish/white, six-sided crystals with faces measuring about a foot across. One sat inconspicuously on the floor beneath some shelves; the other tucked away in the corner

of the back room. Intrigued, I asked the sales lady about them, and she kindly provided me with a copy of *The Mining Record* article. Returning this March, I had the chance to interview Tezak, who owns and operates the business.

As stated in *TMR*, Jim and his brothers, Ed, Bill and Mike, first purchased a "played-out" claim in 1968 for \$4,000, intending to mine rose quartz for his landscaping business. By '71 their mother, Elsie, almost had them convinced to sell their Devil's Hole Mine for fear that they'd contract silicosis from blasting dust, but then a blast revealed a cluster of four massive, pale green beryl crystals. The largest was estimated to weigh 10 tons of the exposed 28 tons of beryl. With the price of beryllium, used to harden steel and other metals, ranging from \$400-\$750 per ton at the time, the Tezak's made an estimated \$20,000 from their beryl find. Intact specimens were sold or donated to museums and mineral collectors—the largest measured almost 19" across and weighed 200 lb. According to Jim, the Denver Museum and the Western Museum of Mining & Industry of Colorado Springs each have a specimen.



Beryl (beryllium aluminum silicate) at 7½ - 8 on the hardness scale is harder than quartz, and, like quartz, forms perfect hexagonal (6-sided) crystals, though beryls are seldom terminated. Most Colorado rockhounds are familiar with the blue/blue-green variety known as Aquamarine, commonly found on Mt. Antero. However, it also comes in other varieties, including Emerald (dark green), Morganite (pink to light purple), Golden Beryl (golden yellow), Heliodor (yellow, yellow-green, brown),

(See "GIANT BERYL" on page 4)

CSMS is an incorporated non-profit organization with these goals:

- To promote and disseminate knowledge of the earth sciences, especially as they relate to mineralogy, lapidary, and fossils.
- To encourage study, collection and fashioning of minerals.
- To accomplish the same through social meetings, lectures, programs, displays, shows, and field trips.
- The Pick&Pack is published monthly to assist and promote the above.

Inside this issue:

Giant Beryl Crystals	1
President's Corner	2
Planned Meeting Presentations	2
Rockhound Watchers	2
AFMS President	3
Upcoming Shows	3
PPHS Museum	4
CSMS Field Trips	5
WMMI Events	5
2007 Show Flyer	5
Science Boring?	6
RMFMS President	7
Brilliant Fire Cut	7
Birthstones	8
Winners in RMFMS Top 5	8
CSMS Scholarship	8
Member Directory	8
New Members	8
Tips	8
Calendar, Locations, & Contacts	9
CSMS Minutes	10
Groups, Classifieds & Advertisers	11
Show Applications	12 & 13

Drew Malin..... President
Linda Laverty..... Vice President
Roger Pittman..... Secretary
James Bushnell..... Treasurer
Bill Cain..... Membership Director
Bill & Betty Cain..... Editors
John Casto..... Member at Large
Brent Williams..... Member at Large
Bob Landgraf..... Past President
Kaye Thompson..... Show Chairman
Brent Williams..... Field Trip Director

Proud Members of:

American Federation of Mineralogical Societies (AFMS)
www.amfed.org

Rocky Mountain Federation of Mineralogical Societies (RMFMS) www.rmfmts.org

Colorado Federation of Gem & Mineral Societies (CFMS)
www.coloradorocks.org

Colorado Springs
Mineralogical Society

Founded in 1936

CSMS
Lazard Cahn
Honorary President

**Our Staff...**

Bill & Betty Cain
Brenda Malin

Editors
Mailer

We encourage everyone to submit articles, photos, illustrations or observations.

Share your experiences, trials and tribulations, your new finds, or simply your experience at our last field trip.

The ability to write well is NOT a requirement. We will fix the grammar while keeping the author's voice, style, and work intact.

Handwrite it, type it, or email it. Format does not matter. All submissions are welcomed.

DEADLINE for items to be included in the next month's issue is the third (3rd) Friday of every month. To submit an item, please use the following:

Photos:

For hardcopy photos, mail to the address below or bring them to the General Assembly Meeting. All photos remain the property of the submitter and will be returned. Electronic photos should be submitted at resolutions above 200 dpi in TIF, BMP, JPG, or PIC format.

Articles:

Mail or email to the addresses below.

ALL FORMATS ARE WELCOMED.

Email: bcain2@earthlink.net or
info@csms.us

Address:

PO Box 2
Colorado Springs, CO 80901

Phone:

(719) 634-8205

PICK&PACK is published ten (10) times per year. 250-275 copies mailed per month.

Unless otherwise marked, materials from this publication may be reprinted. Please give credit to the author and PICK&PACK.



Drew Malin

The weather is warming, grass is greening, and trees are budding—springs is on it's way! That also means our Annual Gem & Mineral Show is just around the corner. Is your display case prepared? Have you volunteered to assist with the many things that need to be done 'behind the scenes' in order to put on a successful show?

We shortened the number of days this year to only two and moved it, hopefully, to a better weekend with less competition from other events being held in the Springs. **Kaye Thompson** and the show committee members started working last fall on planning and promoting our show. Still, we need everyone to pitch in and lend a hand.

We are very fortunate to have obtained the "American Woman" exhibit for our show. We're planning a field trip during this year's show, the vendors are signed up, and the fluorescent trailer will be ready for exhibitors. We've "rented the hall and hired a band; now all we need is the wedding party." That's YOU!

We had a very cold and snowy winter; but now the earth is renewing, and club activities are on the rise—the Science Fair, our Scholarship, field trips are planned, and our show is coming. Take a cue from Mother Nature and end your hibernation. Get your "show blood" pumping; finish and enter that display case.

If showing is not your thing, you can still help out by volunteering to assist in some way—man the entrance, work the hospitality booth (if you don't mind sharing it with me), assist in the Kid's Gem Mine, donate specimens and help out in the Silent Auction, volunteer for Security, and on and on. I'm sure Kaye can find a spot that just fits your talents! Don't forget the most important job of all—invite your friends and family to attend. Discount admission coupons will be available in The Gazette. Let's have a GREAT 2007 SHOW!



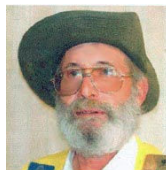
GENERAL ASSEMBLY PRESENTATIONS

Many THANKS to **Paul Grogger**, UCCS professor, for the great presentation at the March meeting. If you need to use a petrographic microscope, please email Paul at pgrogger@uccs.edu to schedule an appointment.

April Presentation—Joseph Dorris will present a program on the current discoveries of the Smoky Hawk and Topaz Mountain gem mines. Several exciting mining projects are in the future which Joe will address as well as collecting opportunities for club members. He will also present updates on current mining regulations and Forest Service projects in the Crystal Peak region. Many of his photos will be of pocket extractions and specimens never before seen. As always, he'll be happy to answer questions on any aspect of mining and mineral sales.

Joe joined CSMS in 1982 and is a life member. Since a young boy, he's had a passion for gems and minerals and has prospected in Idaho, Montana, and Colorado where he's made important gem and mineral discoveries. Also a school teacher, soccer coach, and Air Force officer, he began selling gems and minerals part-time in 1986, has owned a shop where he did gold and silver jewelry, but now limits his business to trade shows such as Tucson and the CSMS shows. Currently his company, Glacier Peak Mining, in conjunction with Colorado Calumet Company (Bryan Lees) is producing some of the best amazonite and smoky quartz combination specimens ever found in the Crystal Peak District.

For those of you who are planning to attend the AFMS Show and Convention in Roswell, New Mexico, the following are some attributes of New Mexico that are being brought to your attention so that your visit will be more enjoyable.

**Political concerns:**

- ☺ New Mexico is part of the United States, so US Customs rules do not apply.
- ☺ Getting out of DWI arrests and running red lights are the state sports.
- ☺ Scalping, other than at sporting events, has not been a problem for several years.
- ☺ Discharge of firearms within the city limits is discouraged, except for the use of small bore shotguns during "Mosquito Roundup Days".

Climate:

- ☺ New Mexico has four distinct seasons: Summer, Fall, Winter, and Wind.
- ☺ Wind speeds seldom reach 100.
- ☺ Summer temperatures, however, do.
- ☺ Extended winter temperatures below zero are not uncommon.
- ☺ More people are killed each year by thunderstorm flash floods than are killed by lightning.

Wildlife:

- ☺ Man-eating animals such as wolves, mountain lions, and bears are elusive and not often seen.
- ☺ Rabid animals are not common.
- ☺ The most common rattlesnake is the "Prairie Rattler". It grows to about two or three feet in length, has rather drab markings to aid its camouflage, and is somewhat shy. The rarer "Timber Rattler" is larger, more distinctly marked, and is more aggressive.
- ☺ The black widow spider can be lethal if one is allergic to the venom.
- ☺ Tarantulas are often too slow to be very dangerous.
- ☺ Scorpions, although abundant, are mostly nocturnal. Only a few species are deadly.
- ☺ The Hanta Virus can only be contracted during late May and early June.

With these facts in mind, how can one be safe? Drive carefully; a green light in your direction does not mean that no cars are coming through the intersection on a collision course. Spend a lot of time at the show, carefully examining the exhibits and spending considerable time with the vendors (this keeps you inside, away from many dangers). Take advantage of the organized field trips; large crowds discourage predators. Dress appropriately, the Convention Hall is air conditioned, but outside it is expected to be a tad bit warm. Enjoy; the people in the yellow Chaparral Rockhound vests will be happy to assist you in any way that they can.

I would also like to remind you that there will be a live gemstone auction. The time and place are TBA. The stones are cut by master cutters throughout the United States and are set in 14kt gold. They will not be cheap, because there will be people in the audience that know the value of the stones, but they will be good! I know that there will be an emerald cut by a Wildacres teacher in the auction, and I have cut two stones to be included.

So, save some money for the auction; the proceeds go to the AFMS Scholarship Fund.

I will see you there.



RLC

Upcoming Shows**Silent Auctions**

- 4/12—Flatirons Mineral Club, Senior Center, 7pm Boulder
- 4/13—North Jeffco Gem & Mineral Club, Arvada
- 5/11—Denver Gem & Mineral Guild, Golden
- 5/12—Friends of Mineralogy, Lakewood
- 6/23—CSMS Annual Show, Phil Long Expo

April 20-22

Meteorites & Dazzling Treasures, 54th annual Wichita Gem and Mineral Society show. Contact Gene Maggard gandpmaggard@wildblue.net.

April 21-22

18th Annual Texas Big Bend Gem & Mineral Show, Marfa, TX. Chihuahuan Desert Gem & Mineral Club. Contact Paul Graybeal (432) 729-4526 paulgraybeal@moonstones.com

April 27-29

Colorado Mineral & Fossil Spring Show, Holiday Inn-Denver Central (NW corner of I-25 at I-70), Free; 70 great dealers from around the world.

May 4-6

McPherson, KS 15th Annual Gem & Mineral Club Rock Sale & Swap. Marvin Lundquist, swed-erocker@mpks.net.

May 12-13

60th Annual Grand Junction Gem, Mineral & Jewelry Show, Two Rivers Convention Center; contact Joe & Gaylene Montano, 797-241-7774.

May 18-19

Annual Swap, Buy-Sell-Trade. Ellinwood Park, KS 620-564-3300.

June 7-10

RMFMS/AFMS Regional Federation show at Roswell, NM.

June 16-17

Rocks for All Ages, NCRC 60th Annual Rock Show w/WY State Gem & Mineral Show, Casper WY. Bonnie Franz 307-265-3187.

June 23-24

CSMS Annual Gem & Mineral Show, "Barite - the Industrial Beauty", Phil Long Expo Center, Colorado Springs, CO. info@csms.us.

June 27-July 1

All Rockhounds Pow Wow Club of America, Jefferson County Fairgrounds, Madras, Oregon; Contact Joan Williamson, 360-458-7162 or madraspowwow@hotmail.com.

August 9-12

CONTIN-TAIL 2007. Contact: Carolyn Tunncliff, 303-833-2939 ctunncliff@comcast.net.

GIANT BERYL (CONTINUED FROM PAGE 1)

Goshenite (colorless to white) and Peach Beryl (orange-pink). Light green beryl is simply called Green Beryl instead of emerald (www.minerals.net/mineral/silicate/cyclo/beryl/beryl). The rarest form is Red Beryl, sometimes called Bixbite, though some seem to distinguish between the two (bright/deep red vs. strawberry red), which is found only in two localities in Utah, those being the Thomas Range in Juab County and the Wah Wah Mountains, near Beaver (www.minerals-n-more.com/Info_Beryl_Family).

Aside from producing fine mineral specimens, beryl (usually found in granite pegmatites) is the most common source of beryllium; another, Bertrandite, comes from volcanic rocks derived from granite. Ore mined in Utah makes up nearly all the U.S. production and about 2/3 of the world supply (www.mii.org/Minerals/photoberyl). In addition to metal alloys for the aerospace and defense industries and many other uses, the Mineral Information Institute's web site states that an alloy of copper and beryllium (beryllium bronze) is commonly used in gasoline pumps because it doesn't spark in contact with other metals or emit sparks from static electricity. Because it absorbs neutrons better than any other metal, rods made of beryllium metal and oxide are used in nuclear reactors.



Some publication and web site sources mention a huge "microcline crystal" from the Devil's Hole Mine in Colorado that is said to have dimensions of 49 x 36 x 14m (meters) with an estimated weight of 16,000 tons. However, this seems to be misinformation based on the beryl finds the Tezak's made in the early 1970's. Indeed, this was news to Jim who

told me that the largest beryl crystal they found was an estimated 5'11" in diameter, 11' long, and 40 tons. Since they had to blast it out, there's no way to confirm it. The crystals from the Devil's Hole are not gem quality but being opaque to translucent blue-green/white are probably low-grade aquamarine. Still, it's worth noting that this mine in our own "backyard" has produced some of the most gigantic crystals in history. The claim is also known for crystals of columbite-tantalite and black tourmaline, which may still be found in the tailings.

The Tezak brothers continued mining the Devil's Hole but sold the claim in 1973. Jim chose to continue his landscaping business/rock shop for the past 30 years, while his brothers went off to work other mines in the Canon City area. Sadly, all these years after his mother's warning, Jim now suffers from silicosis and has put his 3½ acres on the Arkansas River containing the rock shop, inventory, mining and farming antiques, and on-site home up for sale. If you've always wanted to own a rock shop, this is your chance!



MINERAL COLLECTION AT PPHS MUSEUM

BY ANDY WEINZAPFEL

Every avid collector in our region with a pulse is quite aware of the exceptional mineral endowment here. Yet many long-time residents of Colorado, and countless visitor to our state, may be surprised to learn of the world-class mineral and fossil treasures found west of Colorado Springs.

With a need for public education in mind, the Lake George Gem and Mineral Club established its "Legacy Project" in late 2005. The goal was to assemble the best collection of Pikes Peak region minerals found in any free public forum in the area. Finding a home for the proposed collection was a 'no-brainer'. The Pikes Peak Historical Society (PPHS) was renovating a building in Florissant as a major museum expansion. PPHS has a parallel mission of education and a long history of responsibly serving the region.

The Lake George Gem and Mineral Club initially funded the purchase of a specimen cabinet and challenged its membership, local miners, and other interested individuals to donate some of their finest specimens for future generations to enjoy. While it is impossible to acknowledge the many generous donors in this column, there have been three noteworthy milestones:

- ◆ December 5, 2005: High-end collectors and miners (**Ken & Melissa Nord, Bill Hawes, Doug & Phyllis Collyer, Quentin Good, and Jason Uecker**) show up at that museum to donate specimens. In a single day, a first-class collection is born!
- ◆ March 26, 2006: **Rich Fretterd** loans a giant smoky quartz crystal, 4' long and weighing 439 lbs, and donates other fine minerals from the Godsden claim
- ◆ Spring, 2006: **The Greater Denver Gem and Mineral Council** provides a grant for purchase of two new mineral cases to house the expanding collection (space in one is currently reserved for an expected major future fossil donation).
- ◆ August, 2006: **Cripple Creek and Victor Gold Mining Company** donates 11 rock and mineral specimens from within and adjacent to the Cripple Creek mining district.

So, today there are about 80 specimens on display in the museum representing Teller, Park, Douglas, Chaffee, and Fremont Counties. Surprisingly, we currently have nothing from classic localities in El Paso County. An unusual aspect of the collection is the variety of local minerals not known to occur in the area by many experience collectors.

The museum is always looking for feedback regarding how to improve the collection. Donations of high quality specimens to this non-profit 501(c)3 are appreciated. Some obvious current gaps in the collection include: creedite (Cripple Creek); beryllium ore (Boomer mine); a gold nugget (Tarryall Creek), and multiple minerals from El Paso County.

The PPHS museum is located in Florissant across from

(See PPHS on page 7)



CSMS FIELD TRIPS

Our field trip lineup for the spring and summer is coming together; we have some exciting trips planned and available to all members. For details on these trips, please contact Roger Pittman (719-684-6286 rpittman@netzero.net), Brent Williams (719-632-3552, zaphod1863@yahoo.com), Ray Berry (719-598-7877, rayber@peoplepc.com), the trip leader, or info@csms.us.

April 21—Holcim Cement Quarry (contact Roger)

May 5—Picketwire Canyon (contact Roger)

May 5—Creek Walk (contact Drew Malin)

May 26—Hondo Canyon, NM (contact Roger)

June 9—Gold Camp Road (contact Ray)

June 25—Show Field Trip, Lake George (contact info@csms.us)

June 30—Mt. Antero (contact Alan & Amanda Schaak, (719) 568-0373, amandaalece@msn.com)

July 21—CSMS Claim (contact Ray)

If you would like to lead a trip or know of a good location, please contact one of the above leaders so that arrangements may be made.

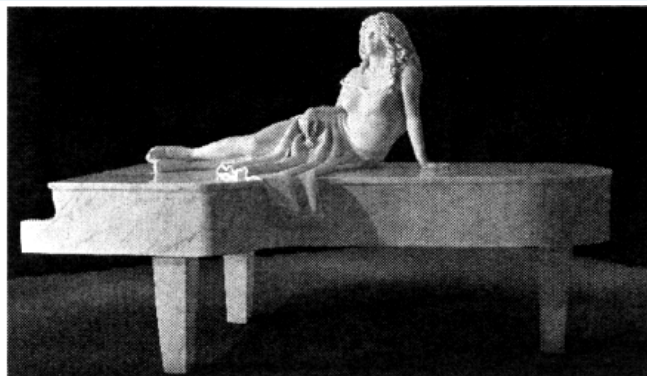


LAST CHANCE TO SEE CSMS EXHIBIT AT WMMI

This is your last chance to see the wonderful Colorado Rockhounding exhibit at the Western Museum of Mining and Industry; the exhibit will be replaced on April 30. Those who have visited the exhibit were impressed and greatly appreciate the museum providing the space for our members to display items of our fun hobby. Remember, two of our 2006 Award of Merit recipients are WMMI employees, Brad Paulson & Terry Girouard; look them up when you go!

Admission is free to CSMS members (another benefit of your membership).

Another event at the museum in April is the **Mining History & Geology Seminar on April 21**. Learn about historic mining and milling (including a one-of-a-kind virtual tour of the Ghost Town of Gillman and the associated Eagle Mine!), explore modern mining methods, environmental consideration, and become familiar with available mining educational resources. Steven Veatch is the course teacher. Cost is \$50 which includes all materials and a box lunch (\$40 for WMMI/CSMS members). For an additional \$30, .5 graduate-level semester credit will be given from Colorado School of Mines. Please call 719-488-0880 for reservations.



“American Woman” by Colorado artist Francisco. Francisco’s new marble sculpture will be on display at the Pikes Peak Gem & Mineral Show 2007. This life size awe-inspiring masterpiece was sculpted from a 21-ton block of marble quarried from the Colorado Yule Mine in Marble, Colorado. Autographed photos of the “American Woman” and autographed chips of marble will be given away at the Show.

43rd Annual Pikes Peak Gem & Mineral Show

Featured mineral—Barite

When: June 23rd & 24th, 2007

Sat. 10AM-6PM

Sun. 10AM-4PM

Location: Phil Long Expo Center

1515 Auto Mall Loop

Colorado Springs, CO 80920

For more information:

Website: www.csms.us

Email: info@csms.us

Phone: (719) 683-2603



Show proof of membership in a mineral club (membership card or newsletter with your name on it) and get a dollar off show admission.

Don’t miss our silent auction.

Free admission to Boy Scouts, Girl Scouts, and Scout Leaders in uniform.

*** Thanks to our Sponsors ***

- The Cripple Creek and Victory Gold Mining Company
- The Gazette
- The SilverWood Hotel & Conference Center

SCIENCE BORING? NOT THIS!

BY BETTY CAIN

It was the first spring-like Saturday we'd had for a long time, and I was going to be stuck inside all day serving as a special judge at the Pikes Peak Regional Science Fair—I had visions of being really tired and bored by the end of the day. But, when the events got under way and I saw the enthusiasm and hard work of the middle school and high school students who were participating, I forgot about my tired legs, aching feet, and all the stress of the week. The kids were amazing, their exhibits were outstanding, and whadda ya know, I had a great time!

The Phil Long Expo was crammed shoulder-to-shoulder with exhibits of interesting facts, test data, pictures, and abstracts, all manned by very bright young people who were eager to make their presentations. I was amazed at the diversity of subjects and their knowledge base. There were individual exhibits in biological science, health, physical science, and engineering by 6th-8th graders, junior and senior high students, and senior high group projects.

How were we to choose the three winners who would receive the CSMS cash awards? Our members had recently voted to double the amount of the awards; **Mike Wheat**, my hubby **Bill**, and I had tough decisions to make. We listened to many presentations, asked lots of questions (which were aptly fielded by the contestants), and finally narrowed the field. We caucused and once more visited the chosen exhibits; our decisions were unanimous, and we had our winners—all 7th grade engineering projects.

Our first place prize of \$200 was awarded to **Delaney Ciborowski** for "Got Erosion; Use Cattails". Second place of \$100 went to **Zoe Anderson** for "Earthquakes and Buildings". Third place of \$50 went to **Trevor Tustin** for "Solid as a Rock".

Mike did the honors at the awards ceremony. The smiles on their faces said it all.

If you're given an opportunity to participate in this event next year, do yourself a favor and say 'yes' - it was a lot of fun and very rewarding!

Congratulations

1st



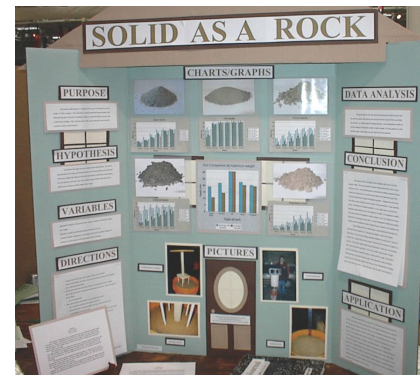
Delaney Ciborowski
"Got Erosion; Use Cattails"



Zoe Anderson
"Earthquakes and Buildings"

2nd

3rd



Trevor Tustin
"Solid as a Rock"



Mike Wheat, Delaney Ciborowski



Mike Wheat, Zoe Anderson



Mike Wheat, Trevor Tustin

All 3 winners manned their exhibits at our March General Assembly and will display their exhibits at our annual show, June 23-24.

Photos by Betty Cain

RMFMS PRESIDENT'S MESSAGE

BY RICHARD JAEGER

Wayne Mouser is our new RMFMS Chairman for the All-American Club contest, a position that has been vacant for some time. Wayne will have information in our new 2007 RMFMS Directory and, I believe, in this or the next issue of the Rocky Mountain Federation News on how to enter this contest. I encourage clubs to start recording your 2007 efforts now so that you will be able to submit an entry next January.

Another area, which has really picked up thanks to **Howie Whiting**, is the AFMS Club Rockhound of the Year Award recognition. I want to recognize **Betty Cain** of the Colorado Springs club. They found that there is no one in the federation that had a certificate for this award so they created one that was presented to their 2006 recipient **Drew Malin** at their Officer Installation Dinner on January 18. They are also giving a Certificate for Club Rockhound of the Year (2007) to **Linda Laverty** in January.

Linda and I went to the Armed Forces Bowl Game in Fort Worth between Tulsa and Utah and took a day to visit Dinosaur Valley State Park at Glen Rose. There are tracks of three different dinosaurs preserved there in the bed of the Paluxy River. The best sets of tracks were removed in 1940 and are now in the Natural History Museum in New York and also some in a museum in Austin. Still, it is amazing to see the remaining tracks and the small, interesting museum at the park Visitors Center. The old town of Glen Rose is interesting too with several buildings being composed primarily of petrified wood (or fossil wood if **Jordan Sawdo** sees this). We have opportunities to see dinosaur tracks in the RMFMS states too. There are dinosaur tracks in the Black Mesa area of the Oklahoma Panhandle. I have seen as many as five sets of tracks totaling probably a hundred individual footprints exposed at one time; they are easily of better quality than the ones at Glen Rose. However, the last twenty years or so all but one of these sets of tracks has been covered with mud and silt. At Clayton Lake State Park in northeastern New Mexico there are approximately 500 tracks exposed. I know that Colorado, Utah, and Arizona also have tracks to be seen. Anyway, check out dinosaur tracks in your area if you haven't done so.

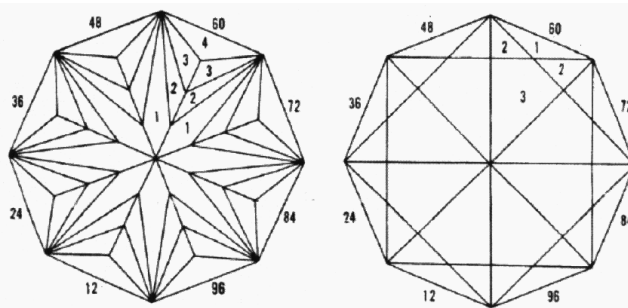


PPHS (CONTINUED FROM PAGE 4)

Park State Bank and near the Post Office at 18033 Teller County Road #1, just south of Hwy 24. Starting April 1st, the museum goes onto "summer hours" - open 10AM-4PM, every day except Sunday and Tuesday. It is staffed by volunteer docents. Admission is free. If you have specific questions or feedback about the mineral collection, don't hesitate to call me at (719) 748-3356 or email at acwein@gmail.com.

BRILLIANT FIRE CUT

FROM THE FACETIER, SAPPHIRE ACETING GUIDE No. 118, 3/78



Pavilion		
Faceting Order	Angle	Index
1	39°	42-54-66-78-90-6-18-30
2	40°	44-52-56-64-68-76-80-88-92-4-8-16-20-28-32-40
3	41°	45-51-57-63-69-75-81-87-93-3-9-15-21-27-33-39

Crown		
Faceting Order	Angle	Index
1	43°	48-60-72-84-96-12-24-36
2	34°	45-51-57-63-69-75-81-87-93-3-9-15-21-27-33-39
3	15°	48-60-72-84-96-12-24-36

Instructions

Angles are for YAG. Index settings are for a 96-index gear. Light to medium color material is recommended. If you wish to use quartz, beryl or some other stone, adjust the angle settings to fit the refractive index of that material.

Perform at 90°, indexing 48-60-72-84-96-12-24-36. Extra care must be taken so that all eight sides are equal: use dividers to be sure. Cut the pavilion first. The crown is very simple because there is no conventional table; instead the last eight facets are cut at 15° and come to a point in the center.

Polish in reverse order of cutting.

The stones measure 17mm at the girdle and weigh 17.75 carats. It received much favorable comment for its exceptional brilliance. The Brilliant Fire is appropriate because, due to its ability to pick up the slightest ray of light and reflect it, the gem seems to glow if viewed in shadow or semidarkness.

APRIL BIRTHSTONE—DIAMOND OR ROCK CRYSTAL

[HTTP://WWW.MINERALGALLERIES.COM](http://www.mineralgalleries.com)

Diamond is the ultimate gemstone, having few weaknesses and many strengths. Diamonds may be nearly any color in the rainbow plus browns, grays, and white. Shades of yellow are most common, followed by colorless. Blue, black, reddish, and greenish are more valuable (some extremely so).



Rock Crystals are in the quartz group, the most common mineral on the face of the Earth. They can be found in nearly every geological environment and is at least a component of almost every rock type. Quartz is also the most varied in terms of varieties, colors, and forms. Rock crystal is the clear variety.

APRIL FOOL'S DAY

WINNERS IN RMFMS TOP 5

BY BETTY CAIN

We received notification from **Linda Jaeger**, RMFMS Club Publications Chair, that our 2007 RMFMS Bulletin Contest entries in Adult Articles (Terry Beh for "Magic Bus Ride with Steven Veatch", Oct 06), Adult Articles-Advanced (Steven Veatch for "Fossil Spiders from Florissant", Oct 06), and New Editor (Bill & Betty Cain) had all scored in the Top 5.

Trophies and ribbons will be awarded at the Editor's Breakfast, June 9th, during the RMFMS Show in Roswell, NM. Congratulations, Terry and Steve!

Please advise the editors if you're planning to attend the Roswell Show and could represent us at the Editor's Breakfast.

SPEAKING OF MEMBERSHIP - We would like to welcome the following new CSMS members:

Tom Acciavatti; LeMerla Beukema; Peggy Hatmann; Jeanne Hensel; Cornelia, Frank & Michael Hice; and Susanne, Kyle & Tyler Methot. Apologies to **Ann Proctor** for identifying her as Ann Parker in the last P&P.

TIPS—Polishing Plume Agate: Undercuts readily occur since the plume is softer than the agate. This can often be remedied by reducing the speed of your sanding and polishing operations. Reduce the speed to about one half normal, and the problem should be eliminated. Avoid excessive heat. *From the Glacial Drifter 2/01.*

Repairing Crystals: If you're looking for a cement to repair quartz crystals, check the hardware store for a product call Crystal Clear. It's made by DURO and comes in a small red plastic syringe. It has the same refractive index as glass, is crystal clear, and cures with UV light. As it is somewhat thick, only a small amount is needed, and the cement dries in a few seconds under bright sunlight or long-wave ultraviolet light. Under a short-wave lamp, it takes longer. The repair almost disappears on broken crystal. The package states it can be used to fill holes and to repair glass. It should also be good for repairing many translucent materials, especially those having a refractive index close to quartz. *From Rock Collector 3/01.*

Rejuvenate Brittle Dop Wax: Add a piece of bees wax the size of a pea to 1/4 lb of dop wax. *From T-Town Rockhound 7/98.*

Jewelry Care, Tips: Wear pearls frequently to absorb natural skin oils to give them greater luster. Put pearls on after applying cosmetics, perfume, and hair spray. Opals are sensitive to extreme temperatures so avoid very hot or cold weather, direct sunlight, or dish washing. Have emeralds oiled by a jeweler every few years to maintain beauty. *From Burrow Express 4/98.*

CSMS SCHOLARSHIP

The new scholarship application has been posted to the CSMS web site. The Board recently voted to expand the scholarship to any college-bound resident of El Paso or Teller County who will be attending or has been accepted to an accredited 4-yr university that has a degree program in Earth Sciences, Mineralogy, or Geology; and has a declared major in Mineralogy, Geology, or some other Earth Sciences field. Membership in CSMS is not a requirement, although special consideration will be given to CSMS members. The scholarship award of \$1000 will be paid directly to the selected winner.

Timeline:

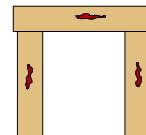
March 1—May 7, 2007: Applications accepted; late apps (post-marked after 5/7) will not be considered.

May 15—June 15, 2007: Applications reviewed.

June 21, 2007: Winner notified.

June 23, 2007: Scholarship awarded at CSMS Annual Gem & Mineral Show.

Applications are available at www.csms.us.



MEMBER DIRECTORY

The CSMS Member Directory will be published in April 2007. The directory is a listing of all Life, Honorary, and paid members. If you haven't gotten your dues to Jim Bushnell, Treasurer, this may be your last chance to be included in the directory. The database is undergoing a thorough cleaning, and we apologize in advance if there are omissions or errors. Please ensure our information is current by completing the 2007 application that's available on the web site or from past issues of the Pick&Pack if you have not done so.

Did You Know that your membership in CSMS also provides membership in RMFMS & AFMS? A small portion of your annual dues goes for affiliation in our regional and national federations.

Sunday	Monday	Tuesday	Wednesday	Thursday	Friday	Saturday
APRIL 2007 — CSMS CALENDAR						
1 April Fool's Day	2	3 First Day of Passover	4	5 7p Board Mtg	6 Good Friday	7 12n Lapidary Mtg
8 EASTER	9	10 7p Micromount Group Mtg	11	12	13 7:30p Crystal Study Grp Mtg	14
15	16	17	18	19 6:30p Show Comm. Mtg 7:30p General Assembly Mtg	20	21 Holcim Cement Quarry Field Trip
22	23 7p Faceting Group Mtg	24 7:30p Camera Club Mtg	25 7p Fossil Group Mtg	26	27	28
29	30					

"Many of life's failures are people who did not realize how close they were to success when they gave up."
- Thomas Edison

Locations

Board Meeting: 1st Thursday
@ 7:00p. SilverWood Hotel
Drew Malin: 531-7594

Camera Club: 4th Tuesday @
7:30p 1514 Hancock, COS
Roger Pittman: 683-2603

Crystal Study Group: 2nd
Friday @ 7:30p, 1514 North
Hancock, COS;
Kerry Burroughs: 634-4576

Jewelry Group: Meets on
informal basis; if interested,
contact Rick Copeland: 594-6293 or
Bill Arnsen: 749-2328

Faceting Group: 4th Monday
@ 7:00p, Various Locations
David Wilson: 635-7891
dlwilson@pcisys.net

Fossil Study Group: 4th
Wednesday @ 7:30p.
John Harrington: 599-0989

Lapidary Group: 1st Satur-
day @ Noon 3085 Rhapsody
Drive, COS.
Drew Malin: 531-7594

Micromounts Group: 2nd
Tuesday @ 7:00p, 1514 North
Hancock, COS
Phil McCollum: acc@frii.com
Moyra Lyne: 442-2673

REFRESHMENTS FOR GENERAL ASSEMBLY MEETINGS

April=Crystal & Jewelry July=Lapidary October=Micromounts
May=Faceting August=No Meeting November=Camera
June=Show September=Fossils December=Everyone

PRESIDENT	Drew Malin	531-7594	advanceone@comcast.net
VICE PRESIDENT	Linda Lavery	520-5939	chilipepper24@juno.com
SECRETARY	Roger Pittman	683-2603	prpittman@netzero.com
TREASURER	James Bushnell	598-9262	bushy@pyramidpeak.com
MEMBERSHIP DIRECTOR	Bill Cain	634-8205	bcain2@earthlink.net
MANAGING EDITORS	Bill & Betty Cain	634-8205	bcain2@earthlink.net
MEMBER-AT-LARGE	John Casto	329-0912	Jcasto@fvs.edu
MEMBER-AT-LARGE	Brent Williams	632-3552	zaphod1863@yahoo.com
PAST PRESIDENT	Robert Landgraf	687-3195	RMLWP74@aol.com
SHOW CHAIRPERSON	Kaye Thompson	636-2978	
FIELD TRIP DIRECTOR	Brent Williams	632-3552	zaphod1863@yahoo.com
LIBRARIAN	Sarah Udell	237-7985	sarahudell@hotmail.com
CAMERA CLUB	Roger Pittman	683-2603	prpittman@netzero.com
CRYSTAL STUDY	Kerry Burroughs	634-4576	kburroughs@adelphia.net
FACETING GROUP	Dave Wilson	635-7891	dlwinlson@pcisys.net
FOSSIL GROUP	John Harrington	599-0989	harrington1@mindspring.com
JEWELRY GROUP	Rick Copeland	332-7915	rick.copeland@covad.net
LAPIDARY GROUP	Drew Malin	531-7594	advanceone@adelphia.net
MICROMOUNT GROUP	Phil McCollum		acc@frii.com
PEBBLE PUBS	Vacant		

COLORADO SPRINGS MINERALOGICAL SOCIETY

Minutes, General Assembly & Annual Banquet

March 15, 2007

Vice President, Linda Laverty, called the meeting to order at 7:33 pm.

The February minutes were corrected to reflect the Founders Trophy awarded to Ray & Eloise Berry was for 2004 and not 2005 as reported; minutes were then approved as printed in the Pick&Pack.

Treasurer's Report

No report.

Guests

Several guests were present and told us of their interests.

Satellite Groups

- Camera Club: Roger Pittman reported on the Camera Club; March competition subject is "pets".
- Crystal Group: Kerry Burroughs reported on the Crystal Study Group meeting; March meeting will be about "colored minerals".
- Faceting: Dave Wilson reported the next meeting will be Bill Meyers' home.
- Fossils: John Harrington reported the fossil group will meet at 4222 Driftwood Drive and detailed a mini-field trip on Saturday, 3/28, to observe log fossils at a park near-by.
- Micromounts: Dee Rickey reported on the next meeting in Moya's absence.
- Lapidary: No report; meets first Saturday of the month.
- Jewelry: Rick Copeland reported that the groups meets informally on demand.
- Field Trips: Trips to Holcim, Picketwire, Hondo Canyon, Mt. Antero, Gold Camp Road, and Lake George were covered. Details on web site.

Other Reports

- Ray Berry talked about a private mineral sale Bill Hayward is having this month in his very full basement. Contact Ray for further info.

Show Report

Kaye Thompson, Show Chairwoman, reported that we are fortunate to have the "American Woman" exhibit before Denver's show. She stated that we already have 4 non-competitive exhibits (a record) but need more competitive entries; each satellite group should submit an entry. We are planning a fluorescent display.

Old Business

- Betty Cain reported on the science writing seminar at WMMI in February and that the Award of Merit plaques were given to Brad Paulson and Terry Girouard. She also reported that CSMS placed in the top 5 in 3 categories of the AFMS/RMFMS contests—Adult Article, Adult Article-Advanced, and New Editor.

New Business

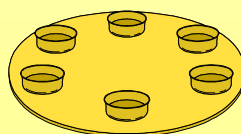
- Kerry Burroughs talked about finding a place to claim for the club (proceeds from the Silent Auction), asked for input or ideas from members, insurance, access for members/non-members, locations of unclaimed areas; contact Kerry, John Casto, or Ray Berry. We'd like the claim ready by August in time for the annual picnic.
- 8th Annual Faceting School of "Hard Rocks" graduation exercises were held; Dave Wilson officiated.
- Randy Stapleton stated that our show was not listed in Rock & Gem! The show committee emailed our info in January and received a confirmation. NOTE: Rock & Gem has no shows listed beyond April 2007 in the April issue.
- Mike Wheat introduced our Science Fair winners: 1st place \$200—Delaney Ciborowski for "Got Erosion; Use Cattails", West Middle School, teacher Mr. Sanchez; 2nd place \$100—Zoe Anderson for "Earthquakes and Buildings", Classical Academy North, teacher Mr. Eaton; 3rd place \$50—Trevor Tustin for "Solid as a Rock", Classical Academy North, teacher Ms. Muir.

Program

- A very entertaining presentation on "Geology of the Pikes Peak Region" by Paul Grogger, University of Colorado, was enjoyed by all.

The meeting closed at 9:25 pm.

Respectively submitted,
Roger Pittman, Secretary



Regular meetings of various groups

Café Scientifique features a talk and discussion on some current science topic; 6-30-8:00 p.m. Tuesday evening once a month (approximately the 3rd Tuesday) at the Wynkoop Brewery (Mercantile Room), corner of 18th & Wynkoop Streets, Denver. No charge; all are welcome.

<http://cafescicolorado.org>

Colorado Scientific Society, monthly meetings with one or two speakers on an earth science topic, 3rd Thursday, 7:00 p.m. American Mountaineering Center, 710 10th St. (NE corner with Washington), Golden, CO.
<http://www.coloscisoc.org>

Denver Mining Club, Informal weekly luncheon meetings with a speaker, every Monday, 11:30-1:00, Country Buffet, 8100 W. Crestline Ave, #A3, Littleton, CO (about 1/2 mile north and east of the intersection of Wadsworth Blvd. & Bowles), tel: 303-933-9923. No charge, but all who attend must purchase a lunch at the restaurant. See web site http://china-resources.net/den_min.html

Denver Region Exploration Geologists' Society (DREGS) meets monthly on the 2nd Monday, 7:00 p.m. Consolidated Mutual Water Company (lower level), 12700 W. 27th Ave., Lakewood, CO; no charge, all are welcome to the meetings. See <http://www.dregs.org/>

Rocky Mountain Assoc. of Geologists (RMAG) has monthly luncheon meetings with a speaker at the Marriott City Center, California St. between 17th & 18th Streets, 11:30 a.m. Luncheon cost is \$24; no reservations are needed for the talk only. See <http://www.rmag.org/>

USGS Colloquium Series, lectures on Thursday, 1:30-2:30 p.m. Foord Lecture Room, Bldg. 20, Denver Federal Center, Lakewood, CO. USGS staff, visitors, and guests are welcome. See <http://geology.cr.usgs.gov/crg/colloquia.htm>

Western Interior Paleontology Society (WIPS), meets 7:00 p.m. first Monday of the month, Sep-May, Ricketson Auditorium, Denver Museum of Nature and Science, <http://www.wipsppc.com>

CLASSIFIEDS . . .

NOTICE—Items listed for sale in the Pick&Pack are displayed only as an informational service to our members and advertisers. CSMS and/or the Pick&Pack do not promote nor warranty any item displayed. The sellers and buyers are responsible for the condition and ownership of any item shown.



24" Saw Closed Cabinet with Auto Feed, on casters, good shape, no leaks—\$2000 (price reduced) Dick's Rock Shop



4-1/2" Trim Saw \$195
Dick's Rock Shop

Mettler H33AR Electronic Scale
160 grams max; accurate to .0001 grams. \$170 Dick's Rock Shop

Oops! We erroneously listed the measurement of the above scale at "gals" rather than "grams".



Lewaco 18" Slab Saw—auto feed, motor, pump \$1200 Dick's Rock



Rock Splitter, Free
Dick's Rock Shop

forackleys@aol.com

(719) 633-1153

Ackley's

Rocks & Stamps

RHONDA JO HART

ART & HELENA ACKLEY
OWNERS

3230 NORTH STONE AVE.
COLORADO SPRINGS, CO 80907

DICK'S ROCK SHOP

- Natural Stone Tools
- Natural Stone Eggs
- Exotic Wood Pen Sets
- Mineral and Fossil Specimens
- Precious and Semiprecious Gemstones
- Gold and Silver Jewelry
- Natural Stone and Wood Bookends

Cobs/Slabs
Lapidary Equipment
Silversmithing Equipment

Diana Wing - Owner
719-390-7788
www.DicksRockShop.com
dwing@dicksrockshop.com

7310 S. Highway 85/87 • Fountain, Colorado 80817

KRYSTALS

Gems Minerals Jewelry
Crystal Skulls
by Appt. Only
719-531-7203
Joe & Marylee Swanson Colorado Springs, CO
Krystals@webtv.net

Mineral Sale

May 5-6, 2007
Saturday & Sunday
9 AM—4 PM

7513 Tudor Road
Colorado Springs, CO
Exit I-25 #149

Hundreds of new specimens
just de-accessed from our
collection and the
Last Hurrah Pocket

Ray & Eloise Berry
(719) 598-7877

**FOR
SALE**

**Collection of
Minerals,
Micromount
Equipment, and
Books**
By appointment only
Dorothy Atlee
(719) 573-0757

The Colorado Springs Mineralogical Society
43rd Annual Gem & Mineral Show
June 23 & 24 2007
Phil Long Expo Center, Colorado Springs, Colorado

REQUEST FOR NON-COMPETITIVE DISPLAY SPACE

Name:	Society Member:	
Address:	Phone:	
City:	State:	Zip:

Exhibitors are urged to bring their own cases. A limited number of club cases are available upon request. Exhibitors using club cases will need to furnish any risers, linings, extension cords, or accessories as needed. EACH CASE WILL BE LIMITED TO 150 WATTS.

NON-COMPETITIVE EXHIBIT

Describe Display:		
<input type="checkbox"/>	I will bring my own case	Case Length:
<input type="checkbox"/>	I will need a case*	Approximate Case Length*:

*CSMS cases are 36" x 24" outside measurements

Set up is Friday, June 22, 4 PM until 9 PM.

Judge / Exhibitor Conference at 1:30 PM, Saturday, June 23.

Signature of Non-Competitive Exhibitor: _____

With the signing of this request, it is mutually agreed that the Colorado Springs Mineralogical Society, the Rocky Mountain Federation, the American Federation, and Phil Long Expo Center shall not be liable to any exhibitor for damage, loss or destruction of any exhibit, or injury to his/her person for any cause; all claims for injury are expressly waived by the exhibitor.

DEADLINE: May 15, 2007

Applications will be accepted
after 5/15 on a space-available
basis.

RETURN TO:

Kaye Thompson, CSMS Show Chairman
1830 Mesita Court
Colorado Springs, CO 80906

PLEASE USE ONE FORM FOR EACH ENTRY – FORM MAY BE REPRODUCED

The Colorado Springs Mineralogical Society
43rd Annual Gem & Mineral Show
June 23 & 24 2007
 Phil Long Expo Center, Colorado Springs, Colorado

REQUEST FOR COMPETITIVE DISPLAY SPACE

Name:	Society Member:	
Address:		Phone:
City:	State:	Zip:

Exhibitors are urged to bring their own cases. A limited number of club cases are available upon request. Exhibitors using club cases will need to furnish any risers, linings, extension cords, or accessories as needed. EACH CASE WILL BE LIMITED TO 150 WATTS.

COMPETITIVE EXHIBIT

Describe Display:					
<input type="checkbox"/> I will bring my own case			Case Length:		
<input type="checkbox"/> I will need a case*			Approximate Case Length*:		
Division	Class	Master	Advanced	Junior	Society

*CSMS cases are 36" x 24" outside measurements

I hereby certify that this exhibitor is a member in good standing of the AFMS / RMFMS.
SIGNATURE & TITLE OF AN OFFICER OF YOUR MEMBER HOME CLUB

Set up is Friday, June 22, 4 PM until 9 PM; Judging will begin at 9 AM, Saturday, June 23.

Judge / Exhibitor Conference at 1:30 PM, Saturday, June 23.

Signature of Competitive Exhibitor: _____

With the signing of this request, it is mutually agreed that the Colorado Springs Mineralogical Society, the Rocky Mountain Federation, the American Federation, and Phil Long Expo Center shall not be liable to any exhibitor for damage, loss or destruction of any exhibit, or injury to his/her person for any cause; all claims for injury are expressly waived by the exhibitor.

DEADLINE: May 15, 2007

RETURN TO:

Kaye Thompson, CSMS Show Chairman
 1830 Mesita Court
 Colorado Springs, CO 80906

BILL & BETTY CAIN, EDITORS



Non-Profit Org.
U.S. Postage
PAID
Colo. Sprgs., CO
Permit No. 66

PICK&PACK
P.O. Box 2
COLORADO SPRINGS, CO 80901-0002

Joining the Colorado Springs Mineralogical Society (CSMS)

General Assembly meetings are the third (3rd) Thursday of each month, except August, beginning at 7:30 p.m. at the Colorado Springs Senior Center, 1514 North Hancock Blvd., Colorado Springs, CO.

Visitor are always welcome.

CSMS also offers Satellite Group meetings that allow more focused attention in specific areas of our members' interests. Our current Satellite Groups consist of the following: Camera Club, Crystal Study Group, Faceting Group, Fossil Study Group, Jewelry Group, Lapidary Group, Micromounts Group, and Pebble Pups. For details of Satellite Group meetings, see page 9.

Yearly dues include 10 issues of the **PICK&PACK**, all field trips (additional fees may be required on some field trips, and members are responsible for all transportation to and from), participation in all Satellite Groups (some groups may request additional fees to help cover resource costs), free admission to the *Western Museum of Mining & Industry*, a year of learning and enjoyment, plus a lifetime of memories.

Individuals—\$20

Family—\$30

Juniors—\$2

If you are interested in joining CSMS or would like more information, we encourage you to attend our next General Assembly meeting (see page 2 for details of the next meeting) or visit our web site: www.csms.us.