

**CSMS General Meeting
Thurs. April 17, 2014 7PM**

**Cripple Creek Update
By Steve Veatch**

Treats Provided by the Lapidary Group

Inside this Issue:

CSMS Calendar	Pg 2
CSMS Research Grants Program	Pg 6
Pebble Pups Corner	Pg 8
Haiku Poem by Reed Noller	Pg 8
Balanced Rock by Luke Stattler	Pg 8
Secretary's Corner	Pg 9
Classified	Pg 10

A LOOK AT TUCSON SATELLITE SHOWS

Mike Nelson csrockguy@yahoo.com

One of the really exciting aspects of the *Tucson Shows*, at least for me, is a chance to visit some of the satellite shows scattered around the city. These shows are sometimes centered around a motel/hotel such as the Hotel Tucson City Center, or a "really large" tent-like structure (22nd Street Show), a permanent building (Mineral and Fossil Co-Op), individual booths/tents/trucks in a parking lot (Miner's Co-Op), or a mixture of booths and the "really large" tent-like structures (Kino Gem and Mineral Show). Some handle only "high end" gems (The Westward Look Show) while several specialize in beads (Tucson Bead Show). I have even seen pickups parked in empty lots selling "rocks" or whatever (not associated with any official show). Usually the "official" vendors sell "something" associated with rocks, gems, minerals, beads, equipment but I have seen sunglass and "coon skin hats" for sale. These entire activities make for a fantastic array of sale items at all prices—from two minerals for a dollar to individual crystals costing tens of thousands of dollars. And these public sales don't take into account all of the private transactions taking place around the city, often before the shows even begin. *Tucson* is an event, something on the bucket list of almost any mineral collector or lapidary. During early February there are a gazillion rock, mineral, fossil, and gem enthusiasts in town and the roads are crowded. I presume the event is a multimillion dollar event for the city as everyone is "talking rocks."



Fig. 1. Get your discount diamonds.

I arrived in the city on a Saturday so the first day was reserved for attending the "Wholesale Show," the Gem and Lapidary Wholesalers, centered at the Holiday Inn in south Tucson (Figs.1-4). A friend of mine provided the ticket passes needed for entrance to the Show. My major com-

CSMS Calendar

April 2014

Tue., Apr 1—Fossil Group, 7 p.m., Senior Center. Jerry Suchan 303 648-3410

Thu., Apr 3—Board Meeting, 7 p.m., Senior Center.

Sat., Apr 5—Lapidary, 10a.m.-2 p.m., Sharon Holte 719 217-5683.

Tue., Apr 8—Micromounts, 7 p.m., Senior Center. Dave Olsen, 719 495-8720

Thu., Apr 17—General Assembly, 7 p.m., Senior Center.

Pebble Pups & Juniors. 5:30 to 6:15 p.m., Steven Veatch, 719 748-5010

Thu., Apr 24—Crystal Group, 7 p.m., Senior Center. Kevin Witte, 719 638-7919

Faceting Group, 7 p.m., Senior Center. Paul Berry, 719 578-5466

Apr, Jewelry Group, By appointment. Call, Bill Arnson, 719 337-8070. 15610 Alta Plaza Cir., Peyton

May 2014

Thu., May 1—Board Meeting, 7 p.m., Senior Center.

Sat., May 3—Lapidary, 10a.m.-2 p.m., Sharon Holte 719 217-5683

Tue., May 6—Fossil Group, 7 p.m., Senior Center. Jerry Suchan 303 648-3410

Tue., May 13—Micromounts, 7 p.m., Senior Center. Dave Olsen, 719 495-8720

Thu., May 15—General Assembly, 7 p.m., Senior Center.

Pebble Pups & Juniors. 5:30 to 6:15 p.m., Steven Veatch, 719 748-5010

Thu., May 22—Crystal Group, Senior Center, Kevin Witte, 719 638-7919

Faceting Group, Senior Center, Paul Berry, 719 578-5466

May, Jewelry Group, By appointment. Call, Bill Arnson, 719 337-8070. 15610 Alta Plaza Cir., Peyton

The Senior Center is located at 1514 North Hancock in Colorado Springs. For more information on any of the sub-groups, meetings, and other CSMS valuable information, go to our website, csms.us

Other Events of Interest to CSMS Members

Apr. 11, 6:45 p.m., North Jeffco Gem & Mineral Club Silent Auction, Apex Community Recreation Center, 6842 Wadsworth Blvd., Arvada

Apr. 11, 7:00 p.m., "The Age of Grand Canyon: A Century of Debate", Dr. Karl Karlstrom & Dr. Rebecca Flowers; at the National Mining Hall of Fame & Museum (ballroom), 120 West 10th Street, Leadville, CO

Apr 14 - Cañon City Geology Club - 7:00 pm program. Stephanie Carter of the Royal Gorge BLM office will speak on "The New Face of Mining", discussing safety and environmental aspects of historic mining versus mining in today's world.

Apr. 18-20, Book/Garage Sale at the Colorado School of Mines Geology Museum; 9 a.m. – 4 p.m. on Fri. & Sat., 1-4 p.m. on Sun.

Apr 18-20, Colorado Mineral & Fossil Show (Ramada Plaza-Denver Central) 4849 Bannock St.

May 3, Colorado Mineral Society Silent Auction, Holy Shepherd Lutheran Church, 920 Kipling St., Lakewood CO

May 10, FM Colorado Chapter, Silent Auction, Clements Community Center, 1580 Yarrow St., Lakewood CO

June 6-8, Pikes Peak Gem and Mineral Show (Western Museum of Mining & Industry)

Aug. 7-10, Contin-Tail Rock Show, Buena Vista Rodeo Grounds

Aug. 14-17, Woodland Park Rock Gem and Jewelry Show, Between Walmart and Burger King on Hwy 24, Rock, Gem, and Jewelry Auction both Fri. & Sat nights.

Aug. 15-17, Lake George Gem and Mineral Show, Lake George, CO

Sep. 7-14, Colorado Mineral & Fossil Show, Ramada Plaza Hotel (formerly Holiday Inn), Denver

Sep. 12-14, Denver Fine Mineral Show, Denver Marriot West, 1717 Denver West Blvd., Golden, CO

Sep. 12-14, Denver Gem and Mineral Show, Denver Mart (formerly the Denver Merchandise Mart) 451 East 58 Ave., I-25 Exit 215.



Fig. 2. Gemstone rings of any size (and price).



Fig. 3. And then there are beads, and more beads,...

Several "stars" from the *Prospectors* TV show were on hand to sell recently collected material, especially from Mt. Antero, and to sign autographs. Amanda and Travis (members of the Colorado Springs Mineralogical Society) from *Colorado Rocks* had some nice aquamarines, both faceted and rough for eager customers. See some of their adventures at: www.facebook.com/pages/Prospector-Amanda-Adkins/. The Busse



Fig. 4. Sapphire at \$350 ct. and emeralds at \$1600 per stone.

plaint about this event is the \$10 charge for parking anywhere remotely close to the Holidome.

As usual, most specimen prices seemed somewhat high for the quality of many pieces but perhaps I am just not interested in looking for small gems in a four figure range. The lesser priced pieces seemed to have been doubled in price and then discounted by 50%! But again, I was not interested in purchasing a flat of emeralds for resale. I did come home with several sterling silver chains priced at \$1.39 gram ---that seemed fair.

My favorite satellite shows are those: 1) where the specimens are more reasonable in price; and 2) where some really nice paleontological specimens are displayed. The Miner's Co-Op was a new show this year and was situated in a parking lot near the Orange Grove and Interstate 10 (Fig.5). Many of these small vendors were, in past years, located on the soccer field east of Kino Park. The scuttlebutt is that the field owners decided to remove the vendors this year? At any rate, I certainly enjoyed visiting with these "mom and pop/back of the truck/from the camper" vendors who seem to represent what rock and mineral collecting is all about—for the "average" buyer. Kim and Bodie (Figs. 6-7) from *Running Boar Minerals* in Woodland Park, Colorado, just up the road from my home in Colorado Springs, was set up and selling nice crystals of Pikes Peak Amazonite <http://tucsonrockgemmineralshow.com/running-boar-minerals/>. The couple also facilitates the June show of the Colorado Springs Mineralogical Society (www.csms.us). I visited the 22nd Street Show a couple of times since the large "tent-like" structure housed a number of interesting vendors. There were some beautiful fossils (original and casts) for sale (Figs. 8-9) and I was able to purchase some nice small minerals (collectors can never have enough vanadinite crystals).



Fig. 5. My kind of show.



Fig. 6. Bodie at *Running Boar* trying to convince a customer.



Fig. 7. Nice Pike's Peak amazonite crystals at *Running Boar*.



Fig. 8. Juvenile mammoth at 22nd Street.



Fig. 9. Frilled dinosaur skull at 22nd Street.

family had a booth next door.

The City Center Show has a quite large number of vendors scattered across the courtyard, in the ballrooms, in parking lot tents, and in all lower level rooms and several on the upper floors (Figs. 10-11). The Show has an amazing diversity of items for sale and one of the busiest vendors was the company selling packing material and boxes.

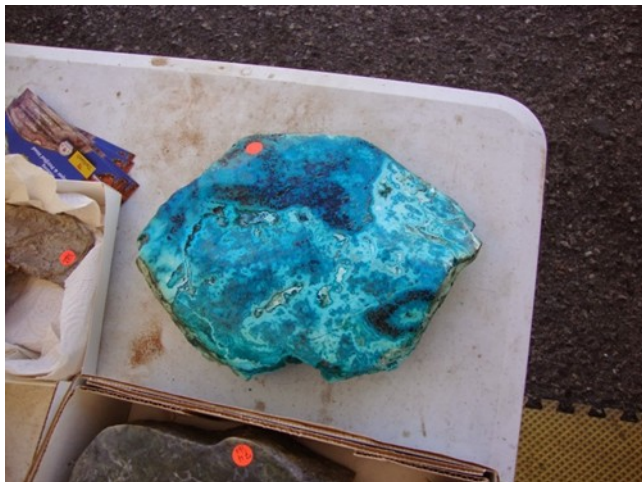


Fig. 10. A beautiful piece of polished chrysocolla from Arizona.

My favorite City Center Vendor is Glen Rockers from Paleo-Search Inc. headquartered in my old stomping grounds of Hays, Kansas (see 9-23-12 blog on amber). I have known Glen from those early days and have admired his many finely prepared specimens (www.paleosearch.com). Glen leases land from ranchers in the western part of the state in areas where the Smoky Hill Chalk Member of the Niobrara Formation is exposed, "the chalk." This Cretaceous unit, over the last 150 years, has produced an amazing number of large fossil reptiles (for example, mosasaurs), fish (for example *Xiphactinus*), invertebrates, and even the occasional dinosaur. Natural history museums across the world often have fossils collected from "the chalk." This time Glen had collected and prepared a very nice bill fish called *Protosphyraena* (Fig. 12). He told me that the specimen is about 80% complete, including the skull. During my time playing in the



Fig. 11. Cast of *T. rex* skull (I presume from Montana).



Fig. 12. *Protosphyraena*, a gorgeous specimen from the Niobrara Formation (the chalk), Kansas.

chalk collectors often found the rostrum (the bony part of the bill) that had broken from unknown skulls. In viewing the photo below remember that the rostrum actually supported a cartilaginous covering. The famed fossil collector Charles H. Sternberg postulated in 1917 that the front teeth projected in a forward direction and the bill and teeth were used as a ramming device on other fish or mosasaurs. I think paleontologists remain uncertain about the use of the bill and teeth; however, Sternberg seemed correct about the projecting teeth. A great photo of a reconstructed *Protosphyraena* is located at: <http://animals.nationalgeographic.com/staticfiles/NGS/Shared/StaticFiles/animals/images/1024/protosphyraena-lw.jpg>

The Mineral and Fossil Co-Op on Oracle Street is a show that I always try to attend although the paleontological specimens are far out of my budget and are museum grade. With that said, attending this show is sort of like walking into a small natural history museum (Figs. 13-14).

The Kino Gem and Mineral Show at the southern end of the city is always one of my favorite shows (Figs. 15-17). Here one can find giant rocks (4 feet) covered with azurite, large quartz crystals, beads for everyone, chairs constructed from fossil wood, some really nice small specimens at reasonable prices, lapidary equipment, coon skin hats, and the ever numerous amethyst cathedrals. There are a few "giant" tents, several small booths, and even several specimens displayed outside. Of course rain had not hit Tucson since sometime in 2013 so



Fig. 13. I must have seen a gazillion cephalopod fossils.



Fig. 14. An Eocene crocodilian, a really beautiful museum-quality specimen.



Fig. 15. My kind of booth at Kino.



Fig. 16. Laboradorite with the sheen and a price, ~\$50-\$60.

weather was not a problem!

There are so many other shows scattered around the city and unfortunately it seems impossible, at least for me, to get around to all of them. Perhaps if I arrived on February 1, I could make a run for it!

One final item, if you are interested in reading about my interpretation of the official "Main Show" check out the April Newsletter of the Rocky Mountain Federation of Mineralogical Societies at www.rmfmts.org.



Fig. 17. Kino will always have amethyst cathedrals.

2014 COLORADO SPRINGS MINERALOGICAL SOCIETY UNDERGRADUATE STUDENT RESEARCH GRANTS

Committee Chair: Dr. Michael Nelson
csrockguy@yahoo.com

The primary goal of the Colorado Springs Mineralogical Society (CSMS) Student Research Grant Program is to promote and support original research on Colorado geology by **undergraduate students**. The grant program does not seek to cover all of the researcher's expenses but instead should be viewed as a professional endorsement of the research endeavor. Requests for grants are judged on how well the proposed research will advance the science of geology and its related branches **within the State of Colorado**. Since the grant program budget is not anticipated to be large enough to fund every research proposal, the grants will be awarded on a competitive basis. The policy for applying for and awarding grants is outlined below.

Eligibility

Undergraduate students who are undertaking **original research projects on Colorado geology** are eligible to apply for CSMS research grants. CSMS research grant applicants need not be members of the Colorado Springs Mineralogical Society. Undergraduate students must be currently enrolled in degree-granting institutions and their research must be part of a degree program (an academic course granting credit and a grade). Institutions may not request that overhead costs be added to budgets. **The Colorado Springs Mineralogical Society strongly encourages women, minorities, and people with disabilities to participate fully in this research grant program.** The research proposals will be evaluated on the basis of the feasibility and scientific merit of the project, the abilities of the researcher, and the reasonableness of the budget. Students are eligible for only one CSMS Student Research Grant per degree pursued.

Research Grant Guidelines

Individual grants will not ordinarily exceed \$700, although a higher sum may be awarded based on merit and number of

grant applications received. One confidential letter of recommendation from the student's research advisor is required for each grant applicant. This letter should be either sent directly to the Committee Chair via Email (csrockguy@yahoo.com) to preserve confidentiality.

Due to different schedules at different institutions, research should be scheduled to begin within 4 months of the grant award (anticipated by early May). For 2014, CSMS anticipates that research will begin during summer 2014.

Rules for the Use of CSMS Research Grant Funds

Grants are to be used for expenses directly associated with the research proposed. For example, research funds may be used for field expenses (travel, some meals, lodging), materials and supplies (sample bags, base maps, air photos, film and developing costs, etc.). Travel to professional meetings will not be funded. CSMS will not fund research by undergraduate students that relates directly to a thesis or dissertation by a graduate student.

Funds requested for equipment, computer time and software, thin-sections, chemical and isotopic analyses, and the purchase of services must be fully justified. Research grants may not be used for salaries or tuition. Upon completion of the research, equipment and materials purchased with a CSMS research grant become the property of the department in which the student is enrolled and are expected to be available to help additional students with their research.

Responsibilities of Recipients

Grant recipients are encouraged to present their results at professional meetings as well as to publish them. In both cases, support by the CSMS should be acknowledged. Recipients who cannot undertake or complete their project must return any unused funds along with a written explanation of expenses incurred. Grants may be subject to tax by the IRS and the grant recipient is responsible for determining this point. **Within 1 year of receiving their grant, all CSMS research grant recipients are expected to 1) submit a written article documenting results of their research for publication in the CSMS Pick & Pack (a newsletter; see www.csms.us), and 2) if within driving distance, present their research at a meeting of the CSMS.**

The Research Grant Committee of the CSMS will review each application. The decisions of this committee are final.

COLORADO SPRINGS MINERALOGICAL SOCIETY

Student Research Grant Program Application

Follow the format below and submit a signed application *postmarked* (**email attachment**) by the 2014 deadline: **APRIL 28**

1. Name of Applicant:
Temporary Address:
Permanent Address:
E-mail:
Telephone numbers and hours that are best to reach you:
2. College/University enrolled:
Expected degree completion date:
Project supervisor and address:
Email:
3. Project title:
4. Statement of problem. Please include in your statement how this work will further our understanding of Colorado Geology.
5. Concisely state how you plan to accomplish your investigation.
6. Give a brief bibliography of the most important papers related to your proposed research (no more than five).
7. Duration of investigation (dates):
8. Budget:
9. Budget justification:
10. Other support for this project, both applied for and received. For support applied for, include dates you expect to know outcome:
12. Sign (electronic signature is valid) and date the submittal:

Please send completed application, via Email attachment to: **csrockguy@yahoo.com**

PEBBLE PUPS CORNER



Pebble Pups in the News

Zack Sepulveda had an article on Talc published in Rock & Gem

Caleb & Hunter Bickel were published in Rock & Gem "Mini Miners Monthly Dictionary A-B"

THREE EARTH SCIENCE SCHOLARS ENROLLED IN UNIVERSITY COURSES

Three middle students are taking online college courses in dinosaur biology and archaeology. Two have enrolled in a dinosaur biology class as online students. The course is through the University of Alberta in Edmonton, Alberta Canada. Philip Curie, a noted paleontologist, is the lead instructor. This is a complete semester-length course that is rich in lecture notes that can be downloaded and videos that are standard lectures plus footage of field activities. The lecture notes are excellent and rival the quality of the most current textbooks. The video lectures are excellent and students can actually interact with the lecture at any time. The video format allows our students to see and hear about immediate field discoveries and new concepts regarding dinosaurs. The course comes with a discussion forum that is optional.

Another Pikes Peak Pebble Pup is enrolled in a class in archaeology that is also online. The course is through Brown University in Providence, Rhode Island. This is a complete semester-length course with video lectures, interviews with professional archaeologists, and a number of activities for students to do

These courses are free of charge. Steven Veatch has enrolled in both courses as the content was too irresistible. Anyone interested in enrolling in these classes should contact Steve at 719-748-5010

Two Poems inspired by an antique postcard of Balanced rock in Garden of the Gods

A Haiku Poem by Reed Noller

There it stands silent
A magnificent red rock
Will it ever move

Balanced Rock By Luke Sattler

This red rock stands so sound, effortlessly balanced, among the rocks of Garden of the Gods.

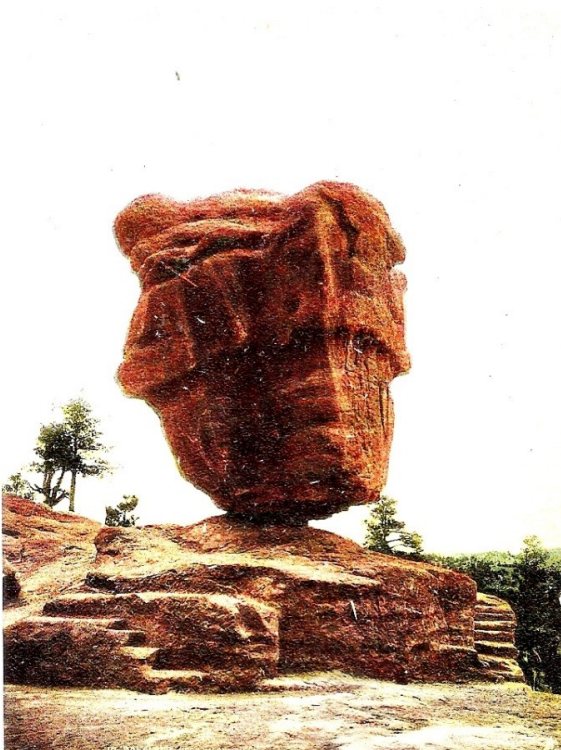
It does not dread the life it has; nor sitting quietly where the other red rocks resides.

Children come each day to play around it, ride on horses to it, or climb its red sides!

This red rock is called Balanced Rock: seen by ancient peoples, prospectors, and tourists.

Generations of people passed Balanced Rock, always in awe of its beauty.

Generations of people will come in the future, and to protect it is our solemn duty.



For this red rock time stands still today. Immovable and balanced, carved from erosion:
Water, wind, chill, frost, and ice take their pick at this red inexorably carving it as a sentinel
The rock stands so still, does not budge nor hold a grudge or judge—just beauty that is plentiful.

The rock will eventually erode to sand, but today it makes its balanced stand!
It sits softly, silently in wait for its destined geological fate.

First Field Trip of the Season

THE CANON CITY GEOLOGY CLUB has invited the Colorado Springs Mineralogical Society to a mineral collecting field trip at the New Hope Amethyst Claim near Cañon City on Saturday, April 26

If you would like to Attend, contact Sharon Holte sharonrocksco@gmail.com . We must let them know how many will be coming by April 20.

Limit 20 vehicles. Collecting limited to 1 large piece and 15 lbs. per person

CSMS Member Moyra Lyne has Passed Away

Moyra Lyne was a long time member of CSMS. For several years she led the Micromount Group. Moyra's health deteriorated last year and she moved back to England to be near family. She passed away in February.

SECRETARY'S SPOT by Renee Swanson

MINUTES OF COLORADO SPRINGS MINERALOGICAL SOCIETY GENERAL MEETING FEBRUARY 20, 2014

Called to order: 7p.m. Followed by Pledge of Allegiance
Program for the evening: Rhodochrosite: The Red Treasure of the Rockies.
New members and guests were introduced.
The break for refreshments was appreciated by all!
Approved the November 2013 minutes as printed in the Pick & Pack.
There are no minutes for December due to it being the Christmas Party.
There are no minutes for January due to Installation Banquet.
Satellite groups made reports.

2014 CSMS Officers

Mark Lemesany, President
Jean Miller, Vice President
Renee Swanson, Secretary
Ann Proctor, Treasurer
Ellie Rosenberg, Editor
Ariel Dickens, Membership Secretary
Susan Freeman, Member-at-Large
Frank Rosenberg, Member-at-Large
Roger Pittman, Past President

2014 CSMS Chairpersons

Kim & Bodie Packham, Show Chairs
Ron Yamiolkoski, Field Trip Director
Ron Yamiolkoski, Science Fair Chair
Frank & Ellie Rosenberg, Librarians
Camera Club Chair is Vacant
Georgia Woodworth, Social Committee Chair
Ann Proctor, Store Keeper
Gary del Valle, Webmaster

MINUTES OF COLORADO SPRINGS

MINERALOGICAL SOCIETY GENERAL MEETING MARCH 20, 2014

Called to order: 7p.m. Followed by Pledge of Allegiance
Minutes for February were read and approved
Kim Packham gave a report on the June show and asked for volunteers
Satellite groups reported.
The first Field trip of the year to the Canyon City Geology Club's New Hope Amethyst Claim was announced for Apr 26.
New members and guests were introduced.
The break for refreshments was appreciated by all!
Program for the evening: Rich Frettard of "The Prospectors" and his Amazing Topaz find.

Sub-Group Responsibilities for Refreshments for General Assembly Meetings

Feb. Fossil	Mar. Jewelry	Apr. Lapidary
May Micromount	June Board	July Crystal
Aug. Picnic	Sept. Faceting	Oct. Fossil
Nov. Jewelry	Dec. Christmas Party	

Colorado Mineral & Fossil Show - Spring

Adams Minerals
Amber America
AmeriAsian Business Corp.
Angelic Healing Crystals
Artisan Jade
Avian Oasis
Chaotic2Creations
Coloradominerals.com
Comet Meteorite Shop
Costigan's Minerals West
Cowboy Crystals/KQ Minerals
Dan's Used Rocks
DB Opals
Enchanted Rock Garden, The
Fenn's Gems & Minerals
Fine Gems & Minerals
The Foothills Boxes
Friends of CSM Geol. Museum
David Geiger Minerals
Gemas NO
Glory Designs
Great Basin Minerals
Great Wall Consulting
Great Wall Mineral Museum
Hands of Spirit
Hamimine Mineraux
Holguin Mexican Minerals
J.K. Stone
Jeanne's Rock Shop
John E. Garsow Gems & Minerals
Johnny Got Rox
Kristalle
Lew Wackler
Madagascar Imports
Midwest Minerals
Minas Brazil Stones



*Beryl, var. Aquamarine with Quartz
Mount Antero, Chaffee Co., CO
Collector's Edge specimen, Frederick C. Wilda watercolor©*

Mineral & Fossil Supply
Mineral Treasure-Madagascar
Gemstone
Morocco's Fossils & Minerals
Moss Rock Enterprises
New Era Gems
Norcross - Madagascar
Donald K. Olson & Assoc.
One of a Kind Designer Cabs
Orca Gems & Opals
Paradise Gems & Minerals
Persson Minerals
Pinnacle 5 Minerals, L.L.C.
Piritas de Navajun
Porter Minerals International
Prospector's Choice Minerals
Rainbow King Solomon's Mines
Raj Minerals, Inc
Rocks N Wraps
Self-A-Ware Minerals
Sidewinder Minerals
SMSMS, Inc.
Starborn Creations, Inc.
Strong Rock, The
Sunnywood Collection, The
Super Bead Mart
T.G. Mining Group
Top-Gem Minerals
Unconventional Lapidarist
Vicjon - Peru
Wendy's Minerals & Gems
World Circle
XTAL - Dennis Beals Minerals
Yuthok Tibetan Treasure

April 18 - 20

Hours: Fri. & Sat: 10 - 6, Sun: 10 - 5

Ramada Plaza - Denver Central

(Formerly Holiday Inn)

4849 Bannock St. (where I-25 meets I-70)

FREE Admission ★ FREE Parking

Wholesale & Retail ★ Open to the Public

Martin Zimm Expositions, L.L.C., P.O. Box 665, Bernalillo, NM 87004 ♦ Fax: 303-223-3478 ♦ mzexpos@aol.com ♦ www.mzexpos.com



Our Staff...

Ellie Rosenberg—Editor

We encourage everyone to submit articles, photos, illustrations or observations. Share your experiences, your new finds, or simply your experience at our last field trip.

Handwrite it, type it, or email it. Format does not matter. All submissions are welcomed. The DEADLINE for items to be included in the next Pick & Pack, is the **21st of the month**

To submit an item:

For hardcopy photos or articles, mail to the address below or bring them to the General Meeting. All hardcopy photos remain the property of the submitter and will be returned. Electronic photos should be submitted at resolutions above 200 dpi in TIF, BMP, JPG, or PIC format. Articles are preferred in word. Editors will correct font

E-Mail to:

csmseditor@hotmail.com

Mail to:

Pick & Pack Editor

PO Box 2

Colorado Springs, CO 80901

The PICK&PACK is published ten (10) times per year;(no issues in January or August). Unless otherwise marked, materials from this publication may be reprinted. Please give credit to the author and CSMS PICK&PACK.

CSMS

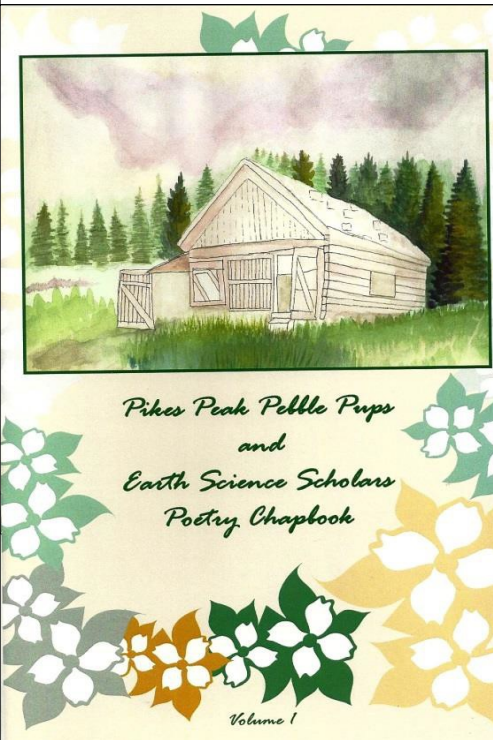
T-Shirts, Badges, and Pins are available for sale.

If you celebrated a CSMS anniversary in 2012 or 2013, your year pin award

See Storekeeper,
Ann Proctor

Classifieds

Pikes Peak Pebble Pups and Earth Science Scholars Publish First Poetry Chapbook



The Colorado Springs Mineralogical Society and the Lake George Gem and Mineral Club both host a junior program. The first volume of their collected poems about Earth science has been published and may be purchased for \$4.00. Shipping and handling is \$1.00. These chapbooks are limited in number and if you plan on buying one you should do it soon. Each book sold will provide each club with \$4. These will be for sale at the Denver Gem and Mineral Show in September. A second volume is being planned now and will be available later this year. To order, please send \$5 to:

Steven Veatch

1823 South Mountain Estates Road

Florissant, CO 80816

In the memo section of the check put the club you belong to so that the club will receive the \$4. Make your check payable to: Veatch GeoScience, LLC. Be sure and act quickly as these books will soon be gone. This also helps the two clubs support the work of the Pebble Pups and Earth Science Scholars. Each month Veatch GeoScience, LLC. will issue a check to each club for the sales of the chapbooks.

ACKLEY'S ROCKS

Cathy / David / Shawna

Owners / CDM Rocks LLC

Services: Lapidary, Silversmithing,

Goldsmithing, and Jewelry Repairs

3230 Stone Ave. Colorado Springs,

CO 80907 719-633-1153

ackleysrocks@comcast.net

Hours: 9 to 5, every day but Sunday.

Sangre de Cristo

Gallery & Rockshop

Steve & Peggy Wilman

114 Main Street, Westcliffe, Colorado 81252

(719) 783-9459

gallery@ris.net

1014 S 21st Street
Colorado Springs, CO
80904

Roots & Rocks

Hydroponic & Organic Garden Center

www.rootsandrocks.com
info@rootsandrocks.com

719-634-1024

KRYSTALS

Gems • Minerals • Jewelry
Crystal Skulls
Wands • Violet Flame

By Appt. Only
719-531-7203

Joe & Marylee Swanson Colorado Springs, CO
Krystals@webtv.net



PICK&PACK
P.O. Box 2
COLORADO SPRINGS, CO 80901-0002

Postage Here

Time Value
Do Not
Delay



CSMS is an incorporated nonprofit organization with these goals:

To promote and disseminate knowledge of the earth sciences, especially as they relate to mineralogy, lapidary, and fossils.

To encourage study, collection, and fashioning of minerals.

To accomplish the same through social meetings, lectures, programs, displays, shows, and field trips.

The Pick & Pack is published 10 times each year to assist and promote the above.

Joining the Colorado Springs Mineralogical Society (CSMS)

Meetings are held the **third (3rd) Thursday of each month**, except January & August, 7:00 p.m. at the Colorado Springs Senior Center, 1514 North Hancock Ave., Colorado Springs, CO. **Visitors are always welcome.**

CSMS also offers Satellite Group meetings that allow more focused attention in specific areas of our members' interests. Our current Satellite Groups consist of the following: Crystal Study Group, Faceting Group, Fossil Group, Jewelry Group, Lapidary Group, Micromounts Group, and Pebble Pups/Juniors. For details on Satellite Group meetings, check out the calendars on page 2 and the web site.

Yearly dues include 10 issues of the *PICK&PACK*, all field trips (additional fees may be required on some field trips, and members are responsible for all transportation to and from), participation in all Satellite Groups (some groups may request additional fees to help cover resource costs), free admission to the *Western Museum of Mining & Industry*, a year of learning and enjoyment, plus a lifetime of memories.

Individuals—\$30, Family—\$40, Juniors—\$15, Corporate—\$100, *****Application is on the web site.

If you are interested in joining CSMS or would like more information, we encourage you to attend our next General Meeting or visit our web site: www.csms.us.

CSMS is a Member of: the following:

American Federation of Mineralogical Societies (AFMS) www.amfed.org

Rocky Mountain Federation of Mineralogical Societies (RMFMS) www.rmfmms.org