



THE BULLETIN OF THE COLORADO SPRINGS MINERALOGICAL SOCIETY Published Since 1960

Colorado Springs
Mineralogical Society
Founded in 1936

Lazard Cahn
Honorary President
March 2018
PICK&PACK

Vol 58... Number #2

CSMS General Assembly

Thursday, March 15, 7:00 PM

Speaker: John Rakowski

Topic: Collecting in the Pikes Peak Region

****In case of inclement weather, please call****

Mt. Carmel Veteran's Service Center 719 309-4714

Inside this Issue:

CSMS Calendar & Other Events	Pg 2
Tucson Gem & Mineral Show	Pg 4
Pebble Pups	Pg. 8 Pg. 9
Secretary's Spot	Pg10
Club Activities and Photos	Pg12
More Pebble Pups	Pg13 Pg14
Classifieds & Field Trip Info	Pg15

Details on This Month's General Assembly Presentation

John Rakowski will give a slide presentation mainly oriented to new collectors in the Pikes Peak region. This may also be a good refresher discussion for experienced members. He will discuss the general geology of the Pikes Peak region and the pegmatite mineralization in the Pikes Peak Granite with photos of the indicators often pointing to pegmatites.

There will be a discussion of the common minerals in this area along with suggested ways to identify them. Beginning tool selection and safety tips will be discussed along with tool suggestions for more serious collectors. Examples of granite, pegmatites and pocket material with mineral examples common to the region will be shown.

John is a retired professional geologist and has been a mineral collector for over 50 years, many of them in the Pikes Peak Region

Announcement regarding "Goodies" at the General Assembly Meetings

A decision was made at the February General Assembly to use the following method of assigning responsibility for the refreshments at our monthly meetings:

It was determined that members whose last names begin with A – L should bring goodies on even months and members whose last names begin with M – Z should bring goodies on odd months.

CSMS Calendar

March & April 2018

Thu., **Mar. 1 & Apr. 5** — **Board Meeting**, 7p.m., Pikes Peak United Methodist Church

Tue., **Mar. 6 & Apr. 3** — **Fossil Group**, 7p.m., Methodist Church, Jerry Suchan, 303 648-3410

Thu., **Mar. 15 & Apr. 19** — **Pebble Pups & Jrs**, 5:30p.m., Mt. Carmel Ctr., Steve Veatch, 719 748-5010

Thu., **Mar. 15 & Apr. 19** — **General Assembly**, 7p.m., Mt. Carmel Center

Thu., **Mar. 22 & Apr. 26** — **Crystal Group**, 7p.m., Mt. Carmel Center, Kevin Witte, 719 638-7919

Thu., **Mar. 22 & Apr. 26** — **Faceting Group** 7p.m., Medina's home, John Massie, 719 338-4276

Note: The Micromount Group is not meeting at this time. If you are interested in meeting, please call Dave Olsen, 719 495-8720

Appointment Only—Jewelry Group, Bill Arnson, 719 337-8070

Appointment Only—Lapidary Group, Sharon Holte, 719 217-5683

For more information on any of the sub-groups, meetings, and other CSMS valuable information, go to our website, csms1936.com

Upcoming Events of Interest to CSMS Members

Submitted by Pete Modreski

Thurs., Mar. 1, 4:00 p.m., Van Tuyl Lecture at Colorado School of Mines, "Record of sediment transport from the Himalayan-sourced Ganges-Brahmaputra Rivers to the deep-sea Bengal fan: 18 Myr of fan deposition from detrital zircons", by Mike Blum, Department of Geology, University of Kansas; Berthoud Hall, room 241.

Thurs., Mar. 1, 7:00 p.m., First Thursday lecture series of the Friends of the Colorado School of Mines Geology Museum, The Boulder County Tungsten District and its History, by Ed Raines, Collections Manager, CSM Museum. Location TBA.

Thurs., Mar. 1, 7:30 p.m., I'll mention yet one more talk being given this same day; Pete Modreski (that's me) will give a presentation: **A Continental Divide Adventure: Relocating the Route of the 1859 Survey of the 40th Parallel Baseline to the "Summit of the Rocky Mountains" in Colorado** at the Maple Grove Grange, 3130 Youngfield St., Wheat Ridge CO. All are welcome; the meeting will begin with an (optional) potluck supper at 6:30, followed by the meeting and slide show presentation at 7:30; all are invited to come for one or both. Email me and I'll send you a summary of the presentation.

Tues., Mar. 6, 10:30 a.m., USGS Rocky Mountain Science Seminar, Building 25 Lecture Hall, Denver Federal Center, "Replacement, metasomatism dynamics, and the blind spot of geochemists", by Enrique Merino, Indiana Univ.

Thurs., Mar. 8, 4:00 p.m., Van Tuyl Lecture at Colorado School of Mines, "Meeting the challenges of the world's growing dependence on groundwater", by Bill Alley, United States Geological Survey & National Groundwater Association; Berthoud Hall, room 241.

Thurs., Mar. 8, 7:30 p.m. Friends of Mineralogy, Colorado Chapter, bimonthly meeting, at Lakewood Event Center, 7864 W. Jewell Ave. "Mineral Species and Occurrences of the Swiss Alpine Clefs", by Brent Lockhart, of Houston, TX. Alpine-cleft minerals occur in open fissures within tectonically deformed igneous or metamorphic host rocks, in the Alps as well as many other mountain belts worldwide. They are noted for quartz (smoky and "rock crystal"), adularia, fluorite, titanite, anatase, hematite, magnetite, chlorite, axinite, and many other minerals.

Tues., Mar. 13, 7:00 p.m., Speakers' Bureau Lecture at the Western Museum of Mining & Industry, Colorado Springs, "Cripple Creek High Grading: The Untold Stories", by Steve Veatch, Geoscientist and Geoscience Educator, and Ben Elick, WMMI and Middle School student, Douglas County School District. Doors open at 6:00 p.m., lecture 7:00 - 8:00 p.m.; \$5 admission, WMMI museum members admitted free. Please RSVP by calling 719-488-0880 or emailing

(Continued on page 3)

(CONTINUED FROM PAGE 2)

rsvp@wmmi.org.

Thur., Mar. 15, 7:00 p.m. March Colorado Scientific Society meeting. Earthquakes and the public, by David Wald, USGS, plus a 2nd speaker and talk, TBA.

Mon., Mar. 19, 3:00 p.m., Denver Museum of Nature & Science Earth Sciences Colloquium, “Floral responses to global environmental change: the end-Permian biotic crisis”, by Cindy Looy, UC-Berkeley. VIP Room, DMNS.

Tues., Mar. 20, 10:30 a.m., USGS Rocky Mountain Science Seminar, Building 25 Lecture Hall, Denver Federal Center, “Great megathrust earthquakes in Alaska”, by Rich Briggs, USGS, Golden CO.

Fri. Sat. Sun., Mar. 23-25, Fort Collins Rockhound Club Gem & Mineral Show, at The Ranch/Larimer County Fairgrounds, Thomas M. McKee 4-H Building, 5280 Arena Circle, Loveland, CO (I-25 exit 259, Crossroads Blvd; 4-8 p.m. Fri, 9-6 Sat., 10-5 Sun.)

Tues, Mar. 27, 3:00 p.m., Denver Museum of Nature & Science Earth Sciences Colloquium, “Origins of life: Why did only Earth succeed?”, by Ramon Brassler, Tokyo Tech., & Steve Mojzsis, CU Boulder. VIP Room, DMNS.

Tues., Apr. 3, 10:30 a.m., USGS Rocky Mountain Science Seminar, Building 25 Lecture Hall, Denver Federal Center, “Three ways to evaluate how well we know the carbon cycle”, by Mary Whelan, Carnegie Instit./Stanford.

Fri.-Sat.-Sun., April 13-15, Colorado Mineral & Fossil Spring Show, Crowne Plaza Hotel DIA, 15500 E 40th Ave., Denver CO. Free admission; hours 9-6 Fri. & Sat., 10-5 Sun.

Sat., Apr. 14, Denver 2018 March for Science; see <http://marchforsciencedenver.org/> .

Thur., Apr. 19, 7:00 p.m., April Colorado Scientific Society meeting, a pair of talks on The role of the USGS and the Colorado Geological Survey; by Eugene (Buddy) Schweig, Director, USGS Geosciences and Environmental Change Science Center, and Karen Berry, Director and State Geologist, Colorado Geological Survey.

Wed., Apr. 25 [tentative date], Robert Hazen, of the Carnegie Institution of Washington, will give a talk at CSM on Mineral Evolution and Mineral Ecology. Details will be available later.

Thurs., May 3, 7:00 p.m., First Thursday lecture series of the Friends of the Colorado School of Mines Geology Museum, The Colorado-Wyoming State Line Kimberlite District, by Philip Persson.

Tues., May 8 (tentative date, to be confirmed), annual Emmons Lecture sponsored by the Colorado Scientific Society, Climate and biology, perspectives from the Paleocene/Eocene transition in the Bighorn Basin; implications for today, by Will Clyde, University of New Hampshire.

For more lecture series during the year see:

Colorado Café Scientifique in Denver, monthly lectures on science topics held either at Blake Street Station or Brooklyn’s, Denver; open to the public, no charge other than refreshments you may choose to purchase; see <http://cafescicolorado.org/> .

Colorado Scientific Society (3rd Thursday, 7 p.m.), see <http://coloscisoc.org/> .

CU Geological Science Colloquium (Wednesdays, 4 p.m.) see <http://www.colorado.edu/geologicalsciences/colloquium>

CSU Dept. of Geoscience Seminars (Fridays, 4 p.m.), see <https://warnercnr.colostate.edu/geosciences/geosciences-seminar-series/>

Van Tuyl Lecture Series, Colorado School of Mines, (Thursdays, 4 p.m.): <https://geology.mines.edu/events-calendar/lectures/>

Denver Mining Club (Mondays, 11:30), see <http://www.denverminingclub.org/> .

Denver Region Exploration Geologists Society (DREGS; 1st Monday, 7 p.m.), <http://www.dregs.org/index.html>

Florissant Scientific Society (FSS); meets monthly in various Front Range locations for a lecture or field trip; meeting locations vary, normally on Sundays at noon; all interested persons are welcome to attend the meetings and trips; see <http://www.fss-co.org/> for details and schedules.

Rocky Mountain Map Society (RMMS; Denver Public Library, Gates Room, 3rd Tuesday, 5:30 p.m.), <http://rmmaps.org/>

Western Interior Paleontology Society (WIPS; Denver Museum of Nature & Science, 1st Monday, 7 p.m.), <http://westernpaleo.org/> .

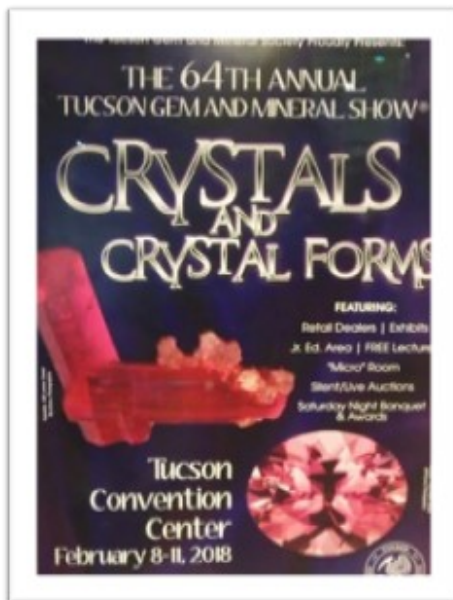
TUCSON GEM AND MINERAL SHOW: 2018

Mike Nelson

csrockguy@yahoo.com

Well, it has finally arrived, or at least I am at the Tucson Gem, Mineral and Fossil Show (TGMS) scheduled February 8-11. Most of the other venues/venues preceding the end of the TGMS—in other words, give or take a few days on either side of these ancillary shows.

Some of these other venues are small shows have a half-dozen utilize individual rooms while others, erect giant, and I mean really large, shows have dealers selling from trailer-pickup beds open to the elements. Some shows are in specific areas—perhaps beads, jewelry, or dinosaur mounts to all sort of minerals and rocks. In addition, specific shows such as the large JOGS Tucson Gem and Mineral Show are restricted to wholesale buyers and “buyer tags” are required for entrance. All in all, the shows/venues represent an amazing experience.



have arrived in Tucson to bum around the Tucson Gem and Mineral Show. At my best count there are about 45-60 different venues/shows this year anchored by the Tucson Gem and Mineral Show and for the Tucson Convention Center February 8-11. My goal this year was to visit

huge; for example, the G&LW Tucson (as best as I can count) while other booths. Some shows are in hotels and such as the large 22nd Street Show, tents. Other more “mom and pop” shops or individual sun/rain protectors or There are several venues that specialize in specific areas—perhaps beads, jewelry, or dinosaur mounts to all sort of minerals and rocks. In addition, specific shows such as the large JOGS Tucson Gem and Mineral Show are restricted to wholesale buyers and “buyer tags” are required for entrance. All in all, the shows/venues represent an amazing experience.

The “granddaddy” of the Tucson venues is the Tucson Gem and Mineral Show® now in progress as I compose this manuscript for the Editor. I usually attend the opening day (February 8, 2018) and the crowd was large and the displays spectacular. The Show, as do most club shows, offers both guest display/competitive cases of minerals, and several hundred dealers (~250). A big difference between TGMS, and a local show such as CSMS, is that high-end dealers from around the world bring their finest specimens to Tucson. The prices for these museum-quality specimens ranges into 7 figures (and are usually marked POR, price on request). However, just ogling at these one-of-a-kind mineral specimens is well worth the entire trip to Tucson.

It also should be noted that TGMS sponsors several lectures and symposia throughout the week and these are free to the public (admission charge for the other parts of the Show). There is a Saturday night program with a silent auction, buffet dinner, an awards ceremony, slide competition awards, and a voice auction. On Thursday the Micromount Room was open and Friday brings the Author Roe Memorial Micromount Symposium.

Due to necessary deadlines for manuscripts, most of this article is based on the TGMS. But remember: 1) the number of exhibits and is behind glass and that fact

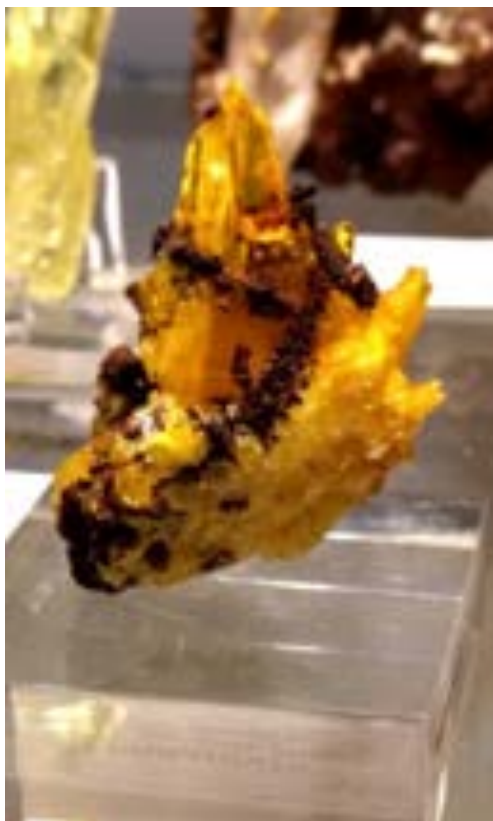
A single row of dealers in the dealers [minerals, books and The Arena section is another houses ~100 mostly jewelry



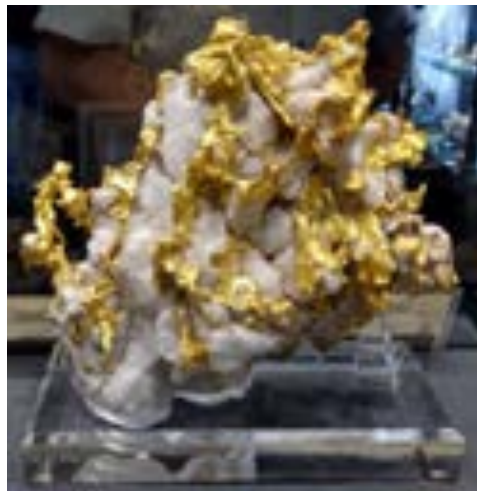
submitting Pick & Pack manuscripts composed of photographs from the Show is overwhelming with cases; 2) virtually every mineral affects photographs.

Exhibition Hall (contains both jewelry) and the display cases). part of the Convention Center dealers.

(Continued on page 5)



Legrandite, a hydrated zinc arsenate, is one of my favorite minerals. This specimen was provided by the Miner's Lunchbox and collected from Level 7, Saint Judas Chimney, Ojuela Mine, Mapimi, Durango, Mexico. One could purchase the specimen for \$35,000.



Gold is always a popular element/mineral at the Tucson Show. The left photo is from The Collectors Edge in Golden, CO. and has a Price-on -Request (POR). The right photo of gold is courtesy of the Miners Lunchbox and is POR.



Collectors Edge displayed this beautiful specimen of zoisite v. tanzanite (calcium aluminum hydroxyl sorosilicate) from Tanzania. Rhodochrosite (manganese carbonate) from the Sweet Home Mine near Alma, Colorado, is in the background.



This amazing specimen (~3 feet in length) of gypsum v. selenite (hydrated calcium sulfate) greeted visitors near one of the entrances. POR with a phone number and from China (where?).



Not all booths had minerals "for sale." Rock of Ages had a wide variety of mining paraphernalia for buyers.

(Continued on page 6)

(CONTINUED FROM PAGE 5)



Like agates? Look no further than this giant, polished Laguna agate, from the Alianza Claim, Estacion Ojo Laguna, Chihuahua, Mexico.



I kept thinking about the number of rings available from "The Largest American Turquoise" taken by Jack Wigley from the Mona Lisa Mine on Little Porter Mountain, Polk County Arkansas.



This image should be recognizable to readers of the Pick & Pack: microcline v. amazonite (potassium feldspar) and quartz v. smoky from the White Cap Pocket, Smoky Hawk Claim, Teller County, Colorado. Display by Collectors Edge.



Pseudomorph of agate (silicon dioxide chalcedony?) after aragonite (calcium carbonate). Collected from Rancho Coyamito Norte, Chihuahua, Mexico.



This is an interesting display of German minerals and German mugs (with a mines motif).



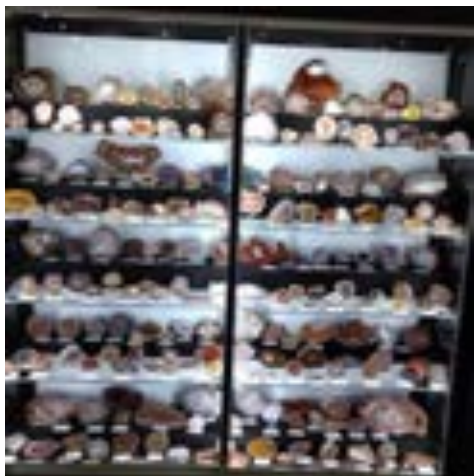
This is an interesting specimen of stibnite, an antimony sulfide. There was no listed locality information, but I am guessing Romania.



I thought this was a beautiful display of turquoise (copper aluminum hydrated phosphate) jewelry.

(Continued on page 7)

(CONTINUED FROM PAGE 6)



This case was a fabulous display featuring a variety of agates. One must read the small locality slips in order to get more complete information but what an interesting case.



These two photos present one of my favorite minerals—amber barite (barium sulfate) collected from concretions in the Pierre Shale (Cretaceous) along Elk Creek in western South Dakota. My collected specimens are not nearly as impressive. The photo on the left also has yellow calcite crystals. Both specimens are courtesy of The Collectors Edge.



I talked to CSMS member Jack T. and was informed that he and Kaye had a competitive case of pyrite. Was this their case?



Specimens of the Tourmaline Group were in several displays and included ilvaite above and elbaite below.



And finally, something sort of whimsical—a calcite sphere on quartz points (covered with dolomite? druse) collected from the Boldut Mine in Romania.

PEBBLE PUPS CORNER



CSMS Pebble Pups & Junior Group

The Junior Group & Pebble Pups meet at the Senior Center every third Thursday at 5:30 PM until 6:15 PM or so. We only meet during the academic year, and we include January. So, it is Sept through May.

Special announcements and field trips are noted on our blog:

<http://pebblepups.blogspot.com>

and through the CSMS website:

<http://www.csms1936.com>

A Pebble Pup Geode

by

Jacob Kania

At our Pebble Pups meeting, we learned many things about geodes. The geode I worked on was found in Dugway Utah. I sawed it in half with a diamond tipped blade! Inside was a cavity lined with the mineral quartz. The geode fluoresced green under an ultraviolet black light. On the outside of the geode, an eye-shaped ridge occurred on the end of the broken geode.



View of a Dugway Geode. Quartz crystals line the cavity of the geode. From the Jacob Kania collection. Image © by the author.



About the author: Jacob Kania is a member of the Pikes Peak Pebble Pups and is 8 years old. He attends the Lake George Charter School and is in 2nd grade.

Dinosaurs are Great

by Elkan Normandin

Dinosaurs are great.
Dinosaurs are awesome,
Dinosaurs are cool.
They even have
scales.
What color are they?



A dinosaur watches an erupting volcano. Art by Elkan Normandin.



About the poet: Elkan Normandin is seven years old and attends Lake George Charter School in the mountains of Colorado. He is in second grade. Elkan enjoys participating in the Pikes Peak Pebble Pups and playing sports, flying remote control aircraft, and looking for rocks.

From: Steven Veatch <steven.veatch@gmail.com>

Sent: Thursday, February 8, 2018 9:02:37 PM

Subject: PEBBLE PUP SET TO SPEAK AT IOWA STATE UNIVERSITY

I am pleased to announce that an abstract a pebble pup and I submitted to the Geological Society of America has been accepted. The pebble pup, Ben Elick, will be the presenting author at the society's conference at Iowa State University this spring. This is a first in the history of pebble pups.

Thanks to the strong interest of the pebble pups anything is possible.

2018 CSMS Officers

- Sharon Holte, President
- Randy Hurley, Vice-President
- Open, Secretary
- Ann Proctor, Treasurer
- Adelaide Bahr, Membership Secretary
- Larry Jones, Editor
- John Massie, Member-at-Large
- Laurann Briding, Member-at-Large
- Ernie Hanlon, Past President

2018 CSMS Chairpersons

- Randy Hurley, Program Coordinator,
- Mike Webb, Field Trip Co Coordinator
- Ernie Hanlon, Field Trip Co Coordinator
- TBD, Science Fair Chair
- Frank & Ellie Rosenberg, Librarians
- Mark Schultz Social Committee Chair
- Ann Proctor, Store Keeper
- Michael Kosc, Webmaster
- Lisa Kinder, Facebook Keeper
- Mike Nelson, Federation Representative
- TBD, Federation Representative

SECRETARY'S SPOT by Sharon Holte

General Meeting Minutes for the
Colorado Springs Mineralogical So-
ciety — 02/15/2018

- I. Meeting was called to order by our President, Sharon Holte, at 7:05 p.m.
- II. Pledge of Allegiance, no flag. Sharon will call Mt. Carmel
- III. Introduction of Guests
- IV. Door Prizes
 - a. There were about 40 members at this meeting. Four minerals were given out, one to each of the following: Barbara Middlemist, Bill Arnson, Frank Rosenberg, and Billy Bell.
 - b. Donations of nice minerals, etc. would be very welcome
 - c. I am still looking for any of the minerals that have been donated for the raffle. In addition, if you have any nice \$20.00 minerals you can afford to donate, we would be very grateful!!!
 - d. Program – Introduction of Roger Pittman – “Colorado’s Yule Marble Quarry.” Roger gave an excellent program with the complete history of the Quarry including many excellent pictures. Thanks, Roger
- V. Break for 15 minutes - for drinks, cookies, and goodies
 - a. Goodies were discussed. It was determined that:
 - i. Members whose last names begins with A – L should bring goodies on even months.
 - ii. Members whose last names begin with M – Z should bring goodies on odd months.
- VI. Approval of December’s minutes. A motion was made, seconded, and passed to accept as published.
- VII. **We still need a Secretary!!please help**
- VIII. Officers Report
 - a. President
 - i. RMFMS Convention in Rapid City, SD (handouts)
 - 1. July 20-22, 2018 delegates
 - 2. Mike Nelson
 - 3. Ernie Hanlon, possibly, he will lets us know as soon as possible
 - ii. AFMS Convention in Raleigh, NC (handouts)
 - April 5-9, 2018, delegates unknown at this time
 - b. Vice President - Randy stated that if someone has an OCR (Optical Character Recognition) program we could possibly use it to copy the Tri-Fold brochure. We are checking with Larry. If anyone has this program, could we please use it?
 - c. Treasurer (Treasurer’s binder), secretary still has this binder - Ann was out ill.
 - d. Secretary – none
 - e. Membership Secretary – Report to store keeper for pins; we need to develop a report for the treasurer for membership pins: 1-year, 5-year, 10-year, 15-year, 20-year, 25-year, and lifetime members.

(Continued on page 11)

2018 Satellite Group Chairpersons

Crystal, Kevin Witte/Bob Germano

Faceting, John Massie/Doreen

Fossil, Jerry Suchan/Joyce Price

Jewelry, Bill Arnson

Lapidary, Sharon, Holte

Pebble Pups, Steven Veatch/
Betty Marchant

2018 CSMS Liaisons

Florissant Fossil Beds
National Monument, Steven Veatch

Western Museum of
Mining & Industry, Steve Veatch

(CONTINUED FROM PAGE 10)

- f. Editor - Larry was out ill. He gave the copies of the Pick & Pack to John Massie. They were on the Board member's table.
- g. Member at Large – John (binder) The secretary gave John a binder.
- h. Member at Large – Laurann (binder) The secretary gave Laurann a binder.
- i. Past President (Past President's binder) The secretary also gave Ernie a Board Member's binder.

IX. Satellite Groups

- a. Crystal Group - Kevin Witte meets the fourth Thursday of the month. February 22, 2018 program was on Topaz
- b. Faceting Group - John Massie meets the fourth Thursday of the month, February 22, 2018.
- c. Field Trips - Ernie Hanlon - Several members stepped up to lead the listed field trips; several more volunteers are needed.
- d. Fossil Group — Joyce Price — meets the first Tuesday of the month, March 6, 2018
- e. Jewelry Group - Bill Arnson by appointment only
- f. Lapidary Group - Sharon Holte by appointment only

X. Liaisons

- a. Claims – Frank Rosenberg — no update yet
- b. Library – Frank & Ellie Rosenberg — Check out the Excel spreadsheet on the website.
- c. Social Coordinator -- Mark Schultz requests more goodies please. This was discussed and a plan was made; see above.
- d. Store Keeper – Ann Proctor — What is the procedure for pins? The Membership Secretary needs to provide a report as listed above.
- e. Constitution, By-Laws and Resolutions – Sharon Holte & Doreen Schmidt — One more proofreading this Tuesday

XI. Approval of minutes for January 2018. A motion was made and passed to accept the minutes as published.

XII. Unfinished Business

- a. Microscope - Ernie is waiting for information from Bob Falls.
- b. Norma Wing's address - Larry has the updated address from Kaye Thompson
- c. Bob Falls, meteorite expert, discussed very heavy specimen from Julio Gutierrez and Cecily Harsh de Gutierrez (Pick & Pack – General Meeting November 16, 2017). Mineral was identified as probably not a meteorite.

XIII. New Business

- a. Ernie – Appreciations
 - i. Ernie handed out many Awards to Board members, and other members who have been instrumental in helping him with the Society in 2017.

(Continued on page 12)

(CONTINUED FROM PAGE 11)

- ii. Ernie also gave Sharon Holte a plaque for her continued efforts for the Society in 2017
- iii. Ernie is also establishing a Trophy; more to follow.
- b. Letter from lawyer about Justice Sutton estate (handouts)
 - i. The letter states that it would be nice if we could match the monies and purchase a building.
 - ii. It also states that if we do not purchase a building, the monies can be used for whatever the Society deems appropriate.
- c. Sharon read into the minutes the letter from Mt Carmel Veterans Service Center stating that they appreciate our support. The letter also states what they had accomplished in 2017.
- d. Sharon also read into the minutes the letter from the Western Museum of Mining & Industry thanking CSMS for our continued support. The letter stated the Benefits of our Gold Medallion Membership.
- e. There was some discussion about not supporting WMMI or the Florissant Fossil Beds National Monument.
- f. The consensus was that CSMS would continue to support both WMMI and the Fossil Beds.

XIV. Meeting adjourned by our President at 8:55 p.m.

At our February Crystal Group meeting, our group leader Kevin Witte gave a comprehensive presentation on Topaz. (Pics by Frank Rosenberg)



President Sharon Holte and Pebble Pups organizer, Steven Veatch, hand Pikes Peak Earth Science Scholar, Ben Elick, the check awarded by CSMS to support Ben's trip to speak at Iowa State University at the Geological Society of America's 52nd Annual Meeting. Our Ben Elick will be the youngest presenter ever to speak at this prestigious organization.



After the presentation, our enthusiastic members had a chance to view one another's specimens brought for swapping.



At our February meeting, former CSMS President and experienced rockhouser, Roger Pitman, gave a captivating presentation on the Yule Marble Quarry. Roger enlightened us that Yule Marble is the Colorado State Rock and has been used not only in the building of the Colorado State Capitol, but also used in the building of the Lincoln Memorial and the Tomb of the Unknown Soldier in Washington DC.

WRITING CLASS SPONSORED BY THE CSMS A SUCCESS

By Chase Alexander

On Saturday, January 28, the Western Mining and Industry Museum (WMMI) presented a class on how to write articles and features for newsletters, newspapers, and magazines. Colorado Springs Mineralogical Society's (CSMS) Life Member and National Rockhound Hall of Fame inductee Steven Veatch taught the course. Ben Elick, a CSMS Pebble Pup, assisted Veatch throughout the day.

The CSMS provided a grant of \$150 to the WMMI to help underwrite this class. The Lake George Gem and Mineral Club (LGGMC) also provided a grant in the same amount. The writing class was open to members of the two clubs and the public. The class was sold-out, and the overflow of participants sat in the back of the museum's library. Veatch taught the subtler points of writing nonfiction articles and features for club newsletters. Ben discussed the best places to obtain historic photos and then conducted a demonstration on how to capture close-up images of rocks, minerals, and fossils. The presenters stressed the importance of using an image or two in articles.

"This is an inspiring and essential class, filled with practical tips," said a local librarian and retired English teacher.

Sharon Holte, CSMS club president, attended the writing class and introduced members of the public to the local mineral society. Some of the attendees from this writing class expressed an interest in joining the CSMS. Several people asked how they could get their kids or grandchildren into Pebble Pups.



The writing class sponsored by the CSMS and the LGGMC was attended by an eager group wanting to learn more about writing. The museum's library was the perfect place to hold this class. Photo by Ben Elick.

Steven Veatch is a noted geoscientist and author. He has contributed chapters to 3 books and has written over 400 articles, abstracts, book reviews, and poems. Veatch is a coauthor of a new book coming out on Cripple Creek and has a completed manuscript of his memoirs as a rock hound and a scientist. He is an annual attendee at the Interlochen College of Creative Arts. Veatch is a member of the National Academy of Poets, Michigan Writers, Pikes Peak Writers, and Pueblo West Writers.

Ben Elick is in 7th grade. He is a coauthor on an abstract published by the New Mexico Mineral Symposium. Elick is also the co-author on an abstract that has been submitted to the Geological Society of America that is now under peer review and slated for publication by the society in April 2018. Ben helps lead an annual poetry hike and a photography hike at the Florissant Fossil Beds. Ben has been a Pebble Pup for five years.



Ben Elick, a long-time Pebble Pup, is now an important part of CSMS public outreach programs. Photo by S. Veatch

Western Museum of Mining & Industry

Speakers' Bureau Lecture

Cripple Creek High Grading: The Untold Stories

Take a mind-boggling look at one of the most significant parts of the history of the Pikes Peak region—the Cripple Creek Gold Rush. This astonishing lecture provides a new perspective on the untold stories of high grading (stealing) valuable ore in the mining district. The story is told through stunning images of ore and striking historic photographs. For fans of local history, this is an essential program. Join Steven Veatch and Ben Elick as they explore the additional details and perspectives on Cripple Creek they have amassed through lost photographs, forgotten diaries, and recently found records. You don't want to miss this.



Tuesday, March 13, 2018. Doors open at 6:00 pm, Lecture 7:00 pm - 8:00 pm \$5 admission, WMMI museum members admitted free! Please RSVP by calling 719-488-0880 or emailing rsvp@wmmi. The lecture will be held in the museum's library at 225 North Gate Blvd., Colorado Springs, CO 80921 | Exit 156 and East from I-25

Steven Veatch is a geoscientist and former adjunct professor of Earth Science at Emporia State University in Kansas where he received an MS in Earth Science. He also has an MA from Webster University, St. Louis in management. Veatch has been involved in geoscience education initiatives for over 25 years. His family came to Cripple Creek in the 1890s from England and worked in the district's mines for over 40 years. Veatch has contributed chapters to 3 books: *Field Trips in the Southern Rocky Mountains, USA*, *Field Guide 5*, *The Paleontology of the Upper Eocene Florissant Formation, Colorado*, and *The World's Greatest Gold Camp: An Introduction to the History of the Cripple Creek and Victor Mining District*.



Ben Elick is in middle school in the Douglas County School District in Colorado. He is a volunteer at the Western Museum of Mining and Industry and is working on conserving the historic photos at the Cripple Creek District Museum. Elick has published nonfiction articles in newspapers and magazines, notably the international Earth science magazine *Deposits*. He recently presented a co-authored paper on Cripple Creek minerals at the New Mexico Technical Institute of Mining and Technology in Socorro and has an abstract under review by the Geological Society of America where he will be the presenting author at Iowa State University in April. Ben has been a member of The Pikes Peak Pebble Pubs since 2012.





Our Staff...

Larry Jones—Editor

We encourage everyone to submit articles, photos, illustrations or observations.

Share your experiences, your new finds, or simply your experience at our last field trip.

Handwrite it, type it, or email it. Format does not matter. All submissions are welcomed. The DEADLINE for items to be included in the next Pick & Pack, is the **20th of the month**

To submit an item:

For hardcopy photos or articles, mail to the address below or bring them to the General Meeting. All hardcopy photos remain the property of the submitter and will be returned. Electronic photos should be submitted at resolutions above 200 dpi in TIF, BMP, JPG, or PIC format. Articles are preferred in Word. Editor will correct font.

E-Mail to:

csmseditor@hotmail.com

Mail to:

Pick & Pack Editor
PO Box 2
Colorado Springs, CO 80901

The PICK&PACK is published ten (10) times per year (no issues in January or August). Unless otherwise marked, materials from this publication may be reprinted. Please give credit to the author and CSMS PICK&PACK.

CSMS

T-Shirts, Badges, and Pins

are available for sale.

If you celebrated a CSMS anniversary in 2016 or 2017, you are eligible for your one year pin award

Please see Storekeeper, Ann Proctor

Classifieds

CSMS 2018 Upcoming Field Trips

Florissant Fossil Beds. March 24

Leader: Steven Veatch.

(See more details below)

Contact: steven.veatch@gmail.com

Book Cliffs. Grand Junction. April 27, 28 & 29

Leader: Mike Webb.

Contact: mwebbstudent@yahoo.com

Canon City, Fremont Co. May 9

Leader: Billy Bell.

Contact: magik4@yahoo.com

Photography Workshop at Florissant Fossil Beds

Saturday, March 24, Introduction to Nature Photography, 1:00 PM – 3:00 PM.

Join volunteer interpretive ranger Steve Veatch and Pebble Pup Ben Elick for a hands on photography workshop amid the spectacular scenery of the Florissant Fossil Beds National Monument. While walking a trail you will learn on-location composition strategies that will turn your photo into something more than a snapshot!

The workshop will teach you how to tell stories with your photos. Learn how to take photos of your next field trip. Meet at the visitor center. Be prepared for outdoor conditions by dressing in layers, wearing a hat and sunscreen, etc. Bring water and snacks and most importantly your own camera. Standard admission rates apply.

Mineral Sale—Glen Eagle, Colorado Springs, CO—Sheila and Mark

Sheila is selling 100 pounds of mineral slabs from her grandfather's collection. Ray Olmstead collected for 30 years, in Idaho and Oregon, where he lived. He also traveled to and collected in Arizona and Montana. He passed on in 1986, so this collection may contain slabs that are no longer available: picture jasper, Biggs picture jasper, obsidian, mahogany obsidian, petrified wood and many other slabs. To contact Sheila please call 719-661-6335 or email her at Sheila.Ison37@gmail.com

High Country Land Services, LLC
 Land Surveying & Mining Claim Services

- New Claims Staked
- Land Status Research
- Certificate and Map Preparation
- Mapping Existing Claims
- Claim Lines Marked

Jeddy L. Olson, Colo. PLS 33199
 Durak, CO 719-365-3874
jeddy@highcountrylandservices.com
HighCountryLandServices.com

1945 1/2 1st Street
 Colorado Springs, CO
 80901

Roots & Rocks
 Hydroponic & Organic Garden Center

www.rootsandrocks.com
info@rootsandrocks.com

719-434-4024



PICK&PACK
P.O. Box 2
COLORADO SPRINGS, CO 80901-0002



CSMS is an incorporated nonprofit organization with these goals:

To promote and disseminate knowledge of the earth sciences, especially as they relate to mineralogy, lapidary, and fossils.

To encourage study, collection, and fashioning of minerals.

To accomplish the same through social meetings, lectures, programs, displays, shows, and field trips.

The Pick & Pack is published 10 times each year to assist and promote the above.

Joining the Colorado Springs Mineralogical Society (CSMS): Meetings are held the **third (3rd) Thursday of each month**, except January & August, **7:00 p.m.**, at Mt. Carmel Center of Excellence, 530 Communication Circle, Colorado Springs, CO 80905. (Starting (9/21/2017) **Visitors are always welcome.**

CSMS also offers Satellite Group meetings that allow more focused attention in specific areas of our members' interests. Our current Satellite Groups consist of the following: Crystal Study Group, Faceting Group, Fossil Group, Jewelry Group, Lapidary Group, Micromounts Group, and Pebble Pups/Juniors. For details on Satellite Group meetings, check out the calendars on page 2 and the web site.

Yearly dues include 10 issues of the *PICK&PACK*, all field trips (additional fees may be required on some field trips, and members are responsible for all transportation to and from), participation in all Satellite Groups (some groups may request additional fees to help cover resource costs), free admission to the *Western Museum of Mining & Industry*, a year of learning and enjoyment, plus a lifetime of memories.

Individuals—\$30, Family—\$40, Juniors—\$15, Corporate—\$100, *****Application is on the web site.

If you are interested in joining CSMS or would like more information, we encourage you to attend our next General Meeting or visit our web site: www.csms1936.com

CSMS is a Member of the following organizations:

American Federation of Mineralogical Societies (AFMS)

www.amfed.org

Rocky Mountain Federation of Mineralogical Societies (RMFMS)

www.rmfm.org